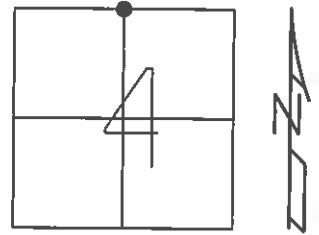


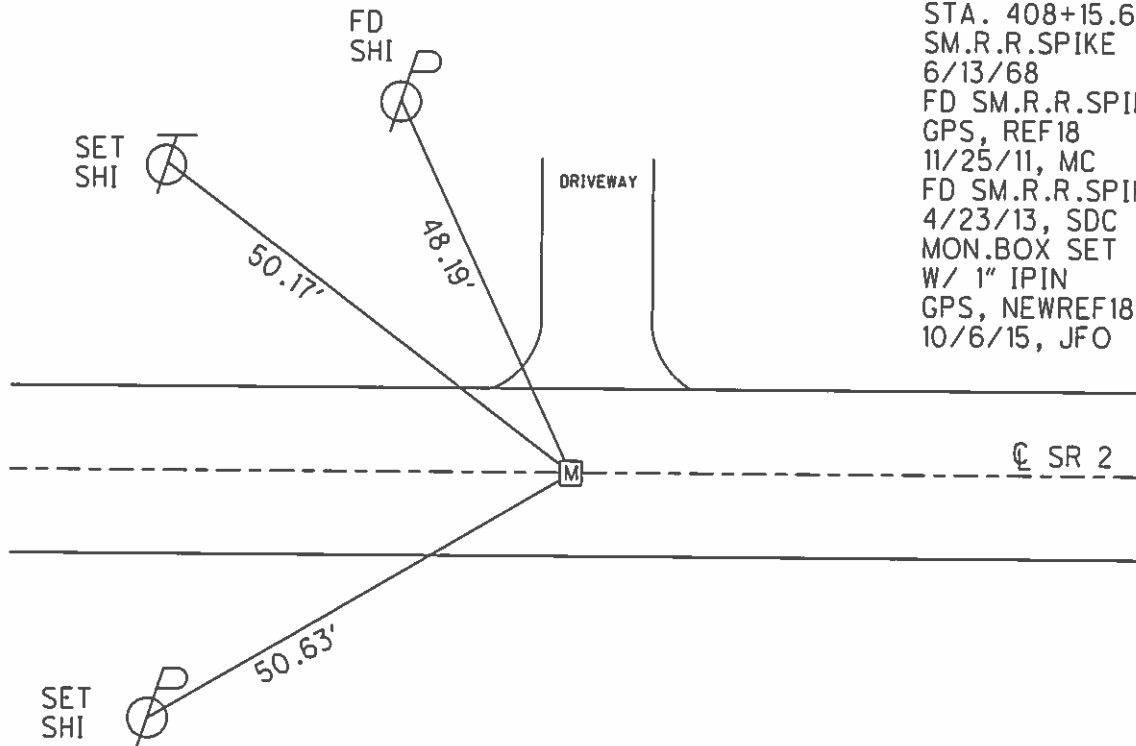
O.D.O.T. DISTRICT 2 SURVEY OFFICE (USE ONLY)

PERSONNEL	REFERENCE NO.	18	SHEET	26	OF	38
NOTES	RHOADES	DATE	10/6/15	ROUTE	SR 2	
H.C.	O'DONNELL	WEATHER	CLEAR	COUNTY	OTTAWA	
R.C.	RHOADES	TEMP.	65°	TOWNSHIP	CARROLL	
				SECTION	4	
				T	7	N
				R	15	E

TYPE MONUMENT MONBOX
 ON SURFACE - ~~BELOW~~ ON
 LEFT - ☉ PAV'T - RIGHT ON
13.3' TO LT EDGE PAVEMENT
 S.L.M. 408+25.18



GRID: NORTHING: 706411.923 EASTING: 1795040.029



RECORD: P.I.
 STA. 408+15.69
 SM.R.R.SPIKE
 6/13/68
 FD SM.R.R.SPIKE
 GPS, REF18
 11/25/11, MC
 FD SM.R.R.SPIKE
 4/23/13, SDC
 MON.BOX SET
 W/ 1" IPIN
 GPS, NEWREF18
 10/6/15, JFO

10-31-74
DATE 7-17-74

PERSONNEL TITLE PERSONNEL TITLE

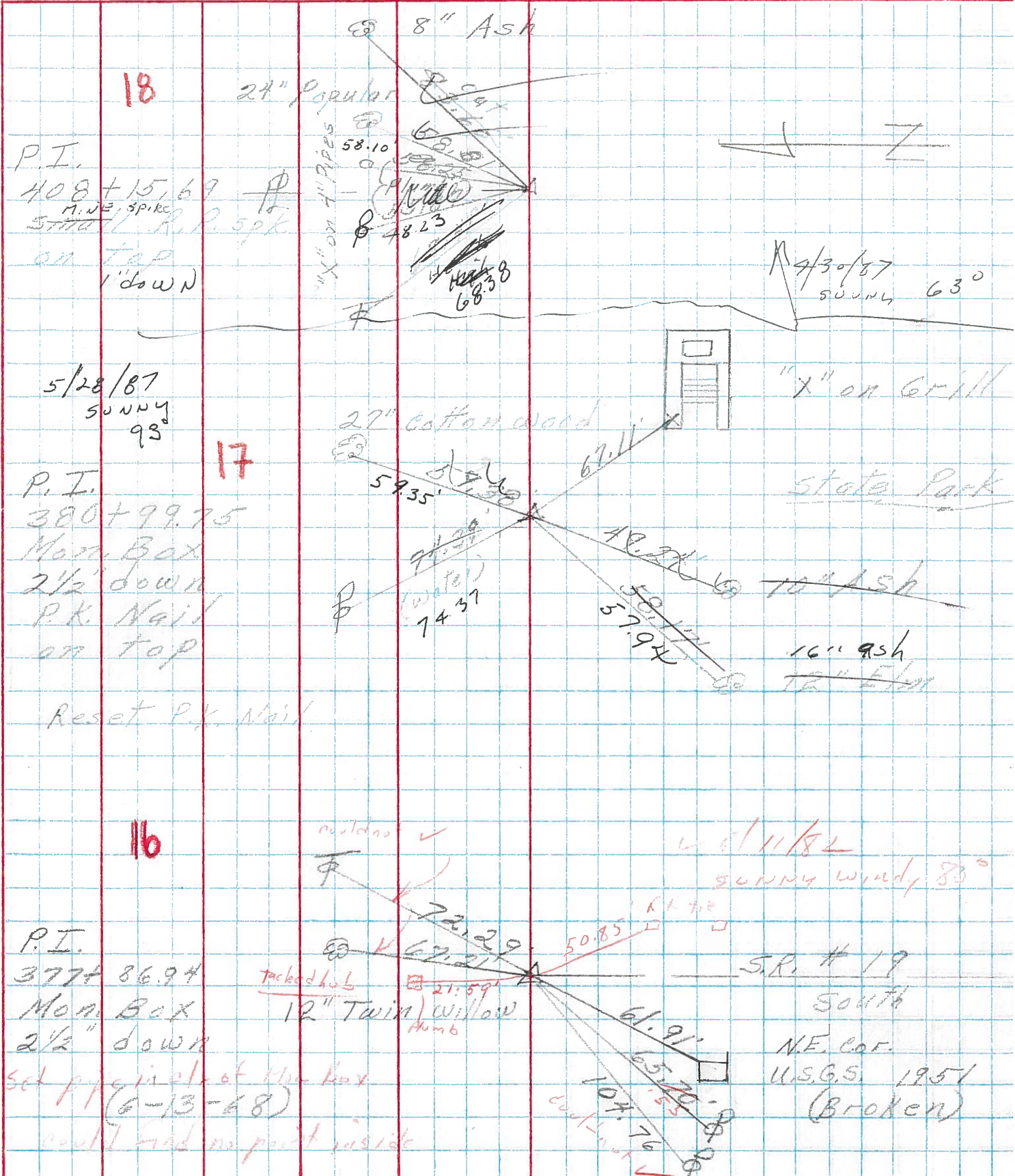
Schneider Cronin
Masser Rippa
Barbour Gelman

COUNTY Ottawa WEATHER Fair

S. R. 2 TEMP. 85°

SEC. 4

DESCRIPTION Benton Twp. S.R. # 19 East JOB NO.



PERSONNEL TITLE PERSONNEL TITLE

Schneider _____
Mossler _____
Barbour _____
Redding _____

COUNTY Ottawa DATE 6-13-68

S. R. 2 WEATHER Cloudy

SEC. S.R. #19 East TEMP. 60°

DESCRIPTION Ties for Control Points JOB NO. _____

