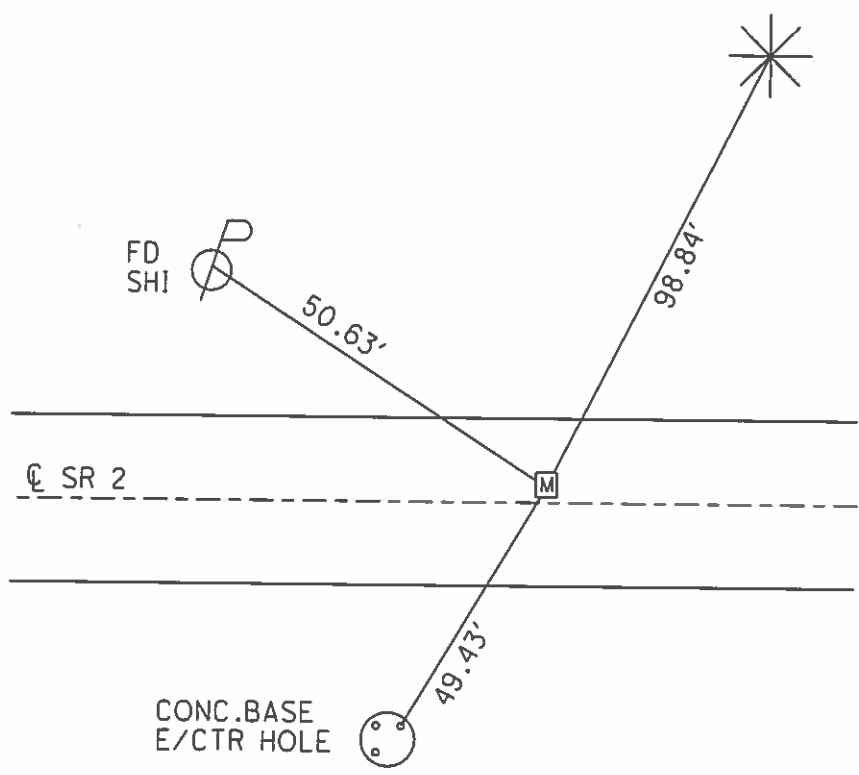
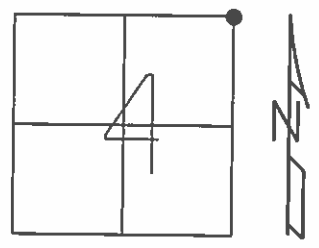


O.D.O.T. DISTRICT 2 SURVEY OFFICE (USE ONLY)

PERSONNEL	REFERENCE NO.	20	SHEET	28	OF	38
NOTES	RHOADES	DATE	4/23/13	ROUTE	SR 2	
H.C.	CODER	WEATHER	CLEAR	COUNTY	OTTAWA	
R.C.	LAU	TEMP.	65°	TOWNSHIP	CARROLL	
	HOMAN			SECTION	4	
	ROUSOS			T	7	N
				R	15	E

TYPE MONUMENT MON.BOX
 ON SURFACE - ~~BELOW~~ ON _____
 LEFT - Q PAV'T - ~~RIGHT~~ 2.5'
10.4' TO LT EDGE PAVEMENT
 S.L.M. 432+28.33
 GRID: NORTHING: 706423.102 EASTING: 1796398.889



SET SHI
 E/BRANCH
 16" PINE

RECORD: P.I.
 STA. 432+19
 FD MON.BOX
 ON IPIN INSIDE
 2 1/2" DOWN
 6/13/68

FD MON.BOX
 GPS, REF20
 N = 706440.656
 E = 1797442.989
 SHOT CTR OF BOX
 WERE STRADDLES X
 11/28/11, MC

FD IPIN 2.16' DOWN
 GPS, REF120
 N = 706440.602
 E = 1797443.061
 5/30/13, SDC

NEW MON.BOX SET
 NO PIN INSIDE
 10/6/15, JFO

10-31-74
7-17-74

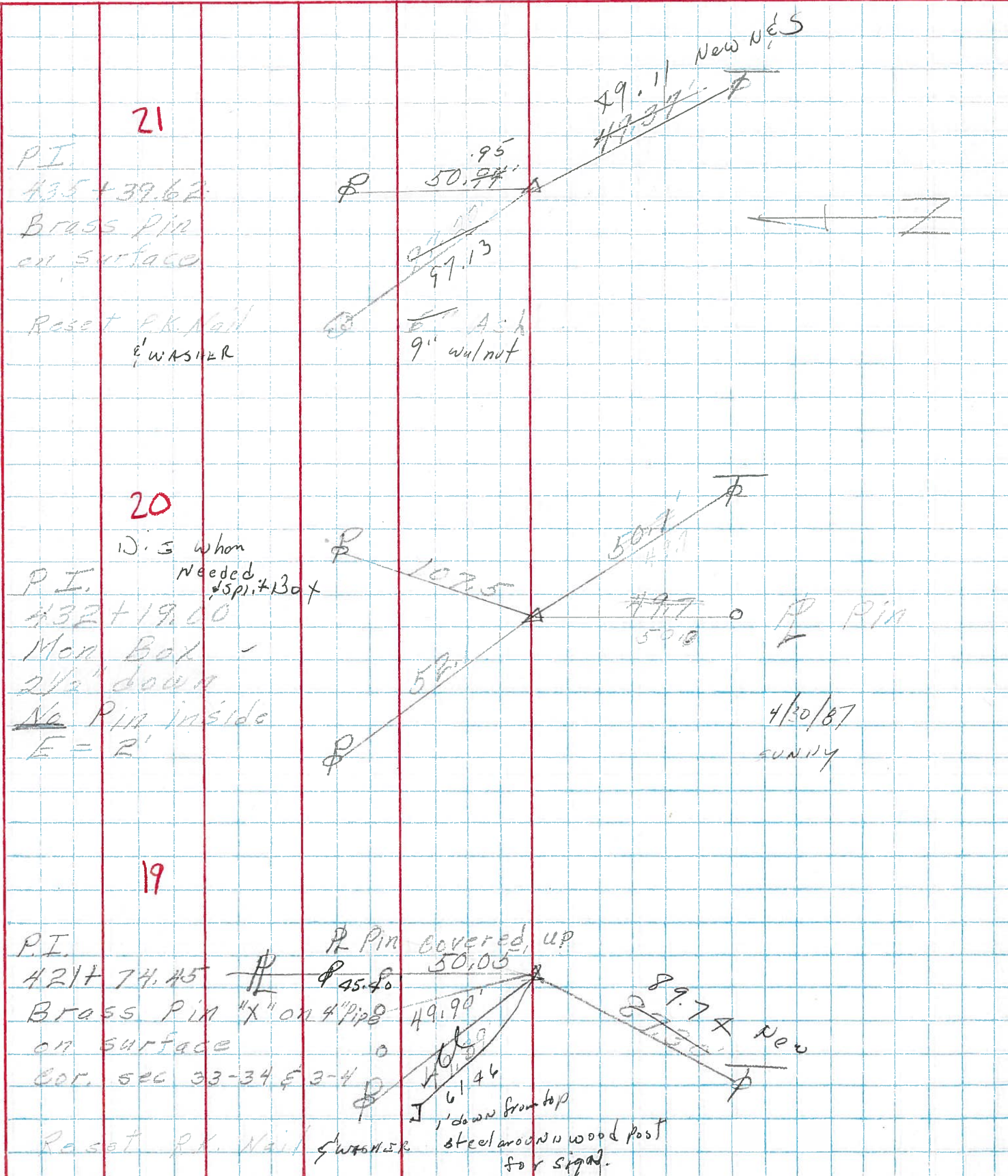
PERSONNEL TITLE PERSONNEL TITLE

COUNTY Ottawa DATE

S. R. R WEATHER Fair

SEC. 3 TEMP. 85°

DESCRIPTION S.R. # 19 East Benton Twp. JOB NO.



PERSONNEL	TITLE	PERSONNEL	TITLE	COUNTY	Ottawa	DATE	6-13-68
Schneider		Potts		S. R.	2	WEATHER	Fair
Mosser				SEC.	S.R. #19 East	TEMP.	65°
Barbour				DESCRIPTION	Ties for Control Points		JOB NO.
Redding							

