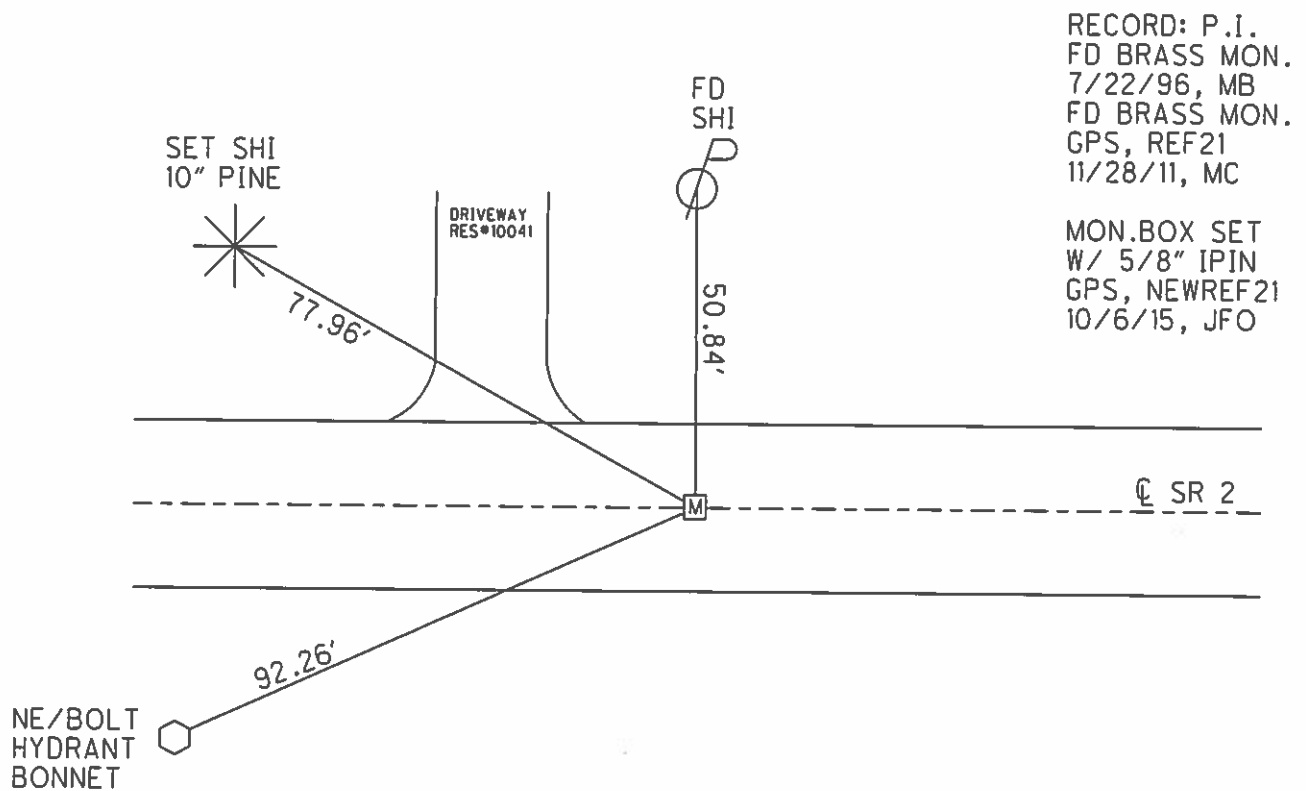
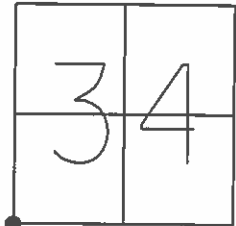


O.D.O.T. DISTRICT 2 SURVEY OFFICE (USE ONLY)

PERSONNEL	REFERENCE NO.	21	SHEET	29	OF	38
NOTES	RHOADES	DATE	10/6/15	ROUTE	SR 2	
H.C.	O'DONNELL	WEATHER	CLEAR	COUNTY	OTTAWA	
R.C.	RHOADES	TEMP.	65°	TOWNSHIP	CARROLL	
				SECTION	34	
				T	8	N
				R	15	E

TYPE MONUMENT MON.BOX
 ON SURFACE - ~~BELOW~~ ON
 LEFT - ☉ PAV'T - RIGHT ON
12.8' TO LT EDGE PAVEMENT
 S.L.M. 435+40.58

GRID: NORTHING: 706432.893 EASTING: 1797755.251



RECORD: P.I.
 FD BRASS MON.
 7/22/96, MB
 FD BRASS MON.
 GPS, REF21
 11/28/11, MC

 MON.BOX SET
 W/ 5/8" IPIN
 GPS, NEWREF21
 10/6/15, JFO

O.D.O.T. DISTRICT 2 SURVEY OFFICE

PERSONNEL _____

REFERENCE NO. _____

SHEET 24 OF 26

NOTES BARNHISEL

H.C. CORDES

R.C. HANES

DATE 7-22-96

WEATHER SUNNY

TEMP. +24°C

ROUTE 2

COUNTY OTTAWA

TOWNSHIP CARROLL

SECTION 34

T8 N R 15 E

TYPE MONUMENT BRASS MON.

~~CONCRETE~~ - BELOW 15.24 cm

~~PAV'T.~~ - yes

3.90m TO LT EDGE PAVEMENT

S.L.M. 13+268.160

21

