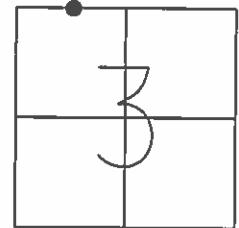


O.D.O.T. DISTRICT 2 SURVEY OFFICE (USE ONLY)

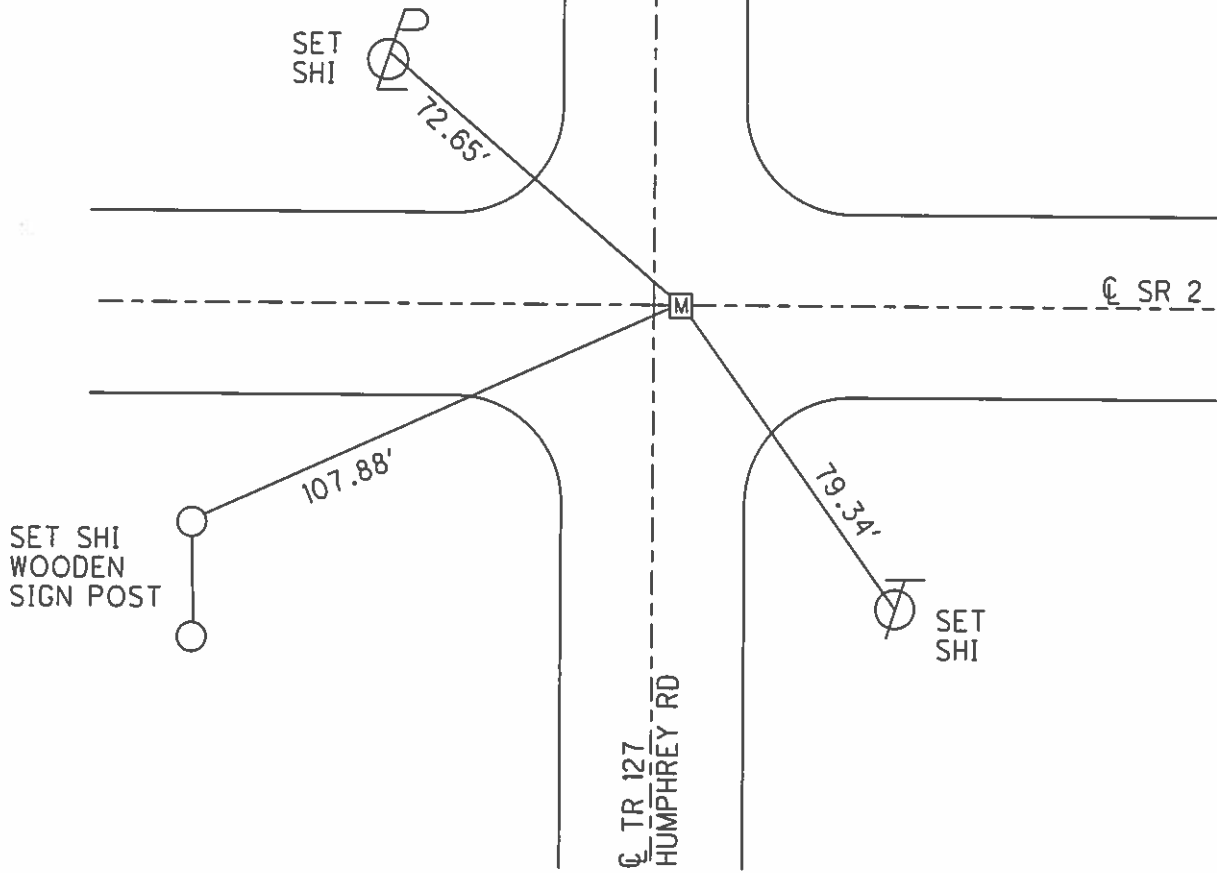
| | | | | | | |
|-----------|------------------|-----------|----------------|-----------|----------------|-----------|
| PERSONNEL | REFERENCE NO. | <u>22</u> | SHEET | <u>30</u> | OF | <u>38</u> |
| NOTES | RHOADES | DATE | <u>10/6/15</u> | ROUTE | <u>SR 2</u> | |
| H.C. | <u>O'DONNELL</u> | WEATHER | <u>CLEAR</u> | COUNTY | <u>OTTAWA</u> | |
| R.C. | <u>RHOADES</u> | TEMP. | <u>65°</u> | TOWNSHIP | <u>CARROLL</u> | |
| | | | | SECTION | <u>3</u> | |
| | | | | T | <u>7</u> | N |
| | | | | R | <u>15</u> | E |

TYPE MONUMENT MON.BOX
 ON SURFACE - ~~BELOW~~ ON
 LEFT - ☉ PAV'T - RIGHT ON
 - TO - EDGE PAVEMENT
 S.L.M. 448+67.98



GRID: NORTHING: 706388.956 EASTING: 1799081.930

RECORD: P.I.
 OLD SBTR 127 ☉
 FD MON.BOX
 GPS, REF22
 11/28/11, MC
 MON.BOX SET
 W/ 5/8" IPIN
 GPS, NEWREF22
 10/6/15, JFO



O.D.O.T. DISTRICT 2 SURVEY OFFICE

PERSONNEL _____

REFERENCE NO. _____

SHEET 26 OF 26

NOTES BARNHISEL

H.C. CORDES

R.C. HANES

DATE 7-22-96

WEATHER SUNNY

TEMP. +24°C

ROUTE 2

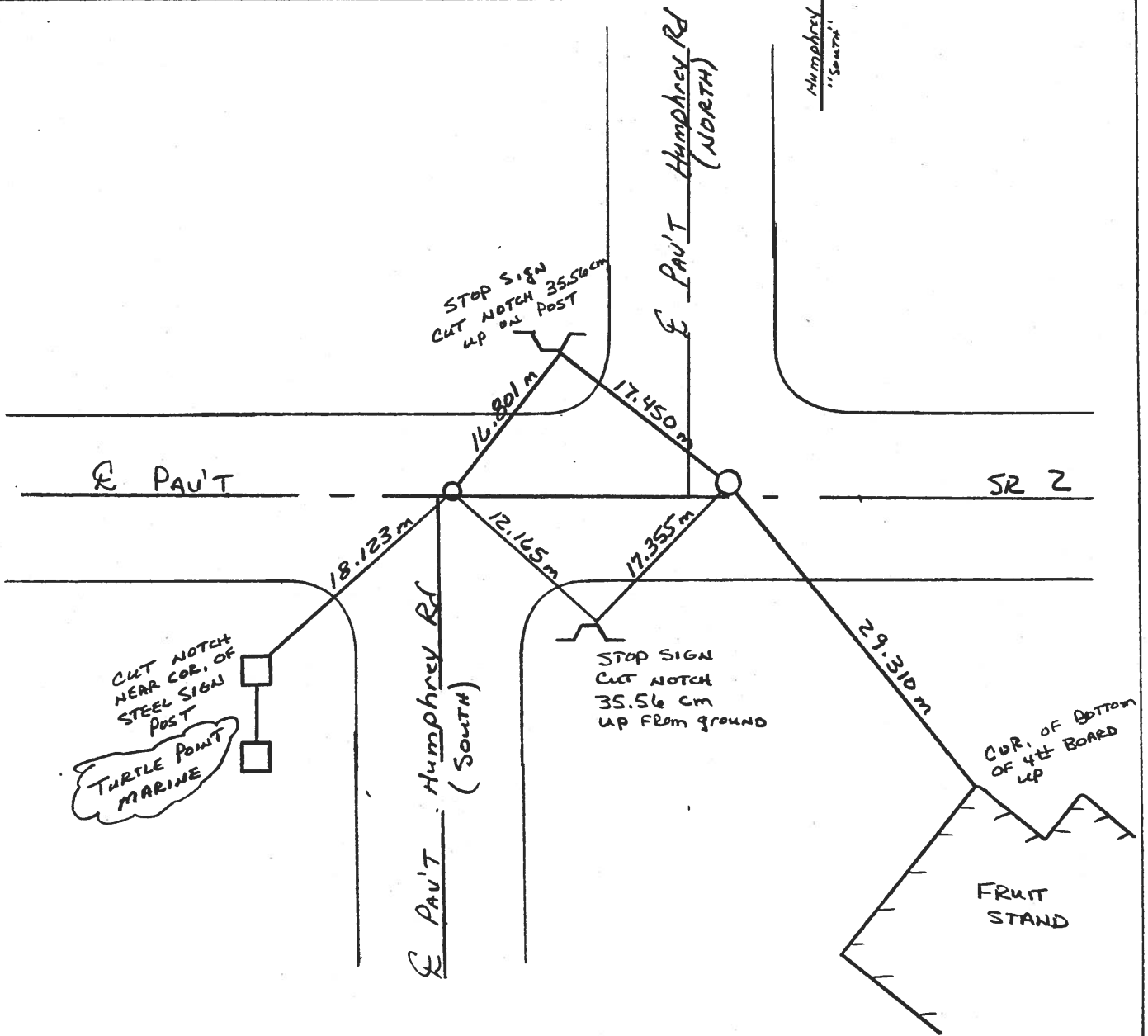
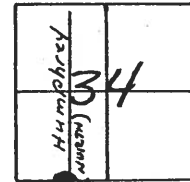
COUNTY OTTAWA

TOWNSHIP CARROLL

SECTION 34

T B N R 15 E

TYPE MONUMENT TACK / BRASS MON.
 ON SURFACE - BELOW SURFACE / 15.24 cm Below
 LEFT- PAV'T. - RIGHT ON E / 15.24 cm LT
^{3.63 m}
^{3.96 m} TO LT RT EDGE PAVEMENT
 S.L.M. 13+653.073 / 13+672.791



| PERSONNEL | TITLE | PERSONNEL | TITLE | COUNTY | DATE |
|-----------|-------|-----------|-------|--------------------|--------------|
| Schneider | | Potts | | Ottawa | 6-13-68 |
| Mosser | | | | S. R. 2 | WEATHER Fair |
| Barbour | | | | SEC. S.R. #19 East | TEMP. 65° |
| Redding | | | | | |

DESCRIPTION Ties for Control Points JOB NO. _____

