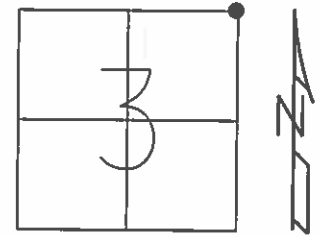


O.D.O.T. DISTRICT 2 SURVEY OFFICE (USE ONLY)

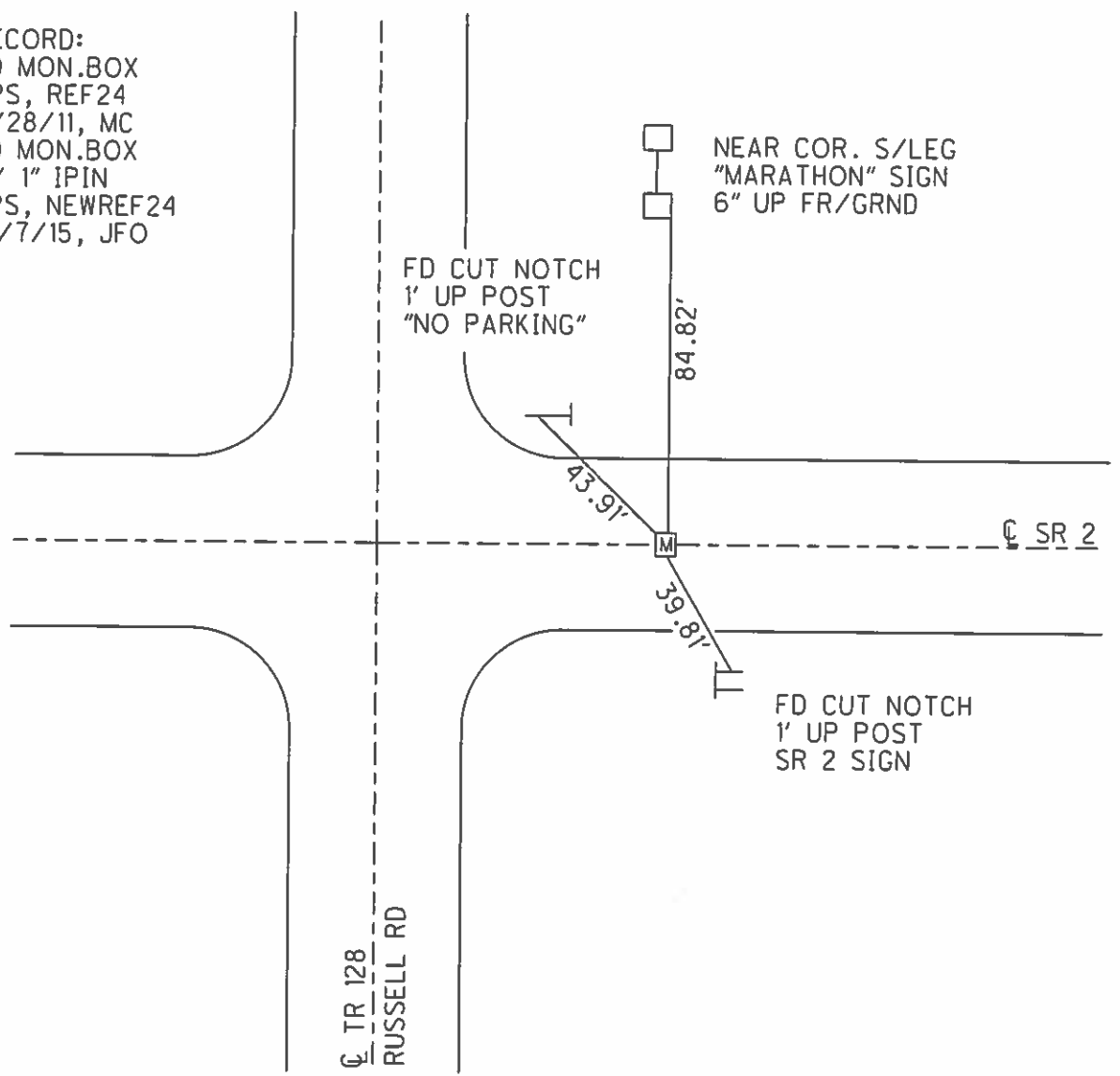
PERSONNEL _____ REFERENCE NO. 24 SHEET 32 OF 38
 NOTES RHOADES DATE 4/25/13 ROUTE SR 2
 H.C. CODER WEATHER RAINY COUNTY OTTAWA
 R.C. ROUSOS TEMP. 47° TOWNSHIP CARROLL
 _____ SECTION 3
 _____ T 7 N R 15 E

TYPE MONUMENT MON.BOX
 ON SURFACE - ~~BELOW~~ ON _____
 LEFT - ☉ PAV'T - RIGHT ON _____
18.3' TO RT EDGE PAVEMENT
 S.L.M. 484+52.05



GRID: NORTHING: 706271.716 EASTING: 1802664.047

RECORD:
 FD MON.BOX
 GPS, REF24
 11/28/11, MC
 FD MON.BOX
 W/ 1" IPIN
 GPS, NEWREF24
 10/7/15, JFO



O.D.O.T. DISTRICT 2 SURVEY OFFICE

PERSONNEL

REFERENCE NO. _____

SHEET 19 OF 22

NOTES BARNHISEL

H.C. CORDES

DATE 8-22-96

ROUTE 2

R.C. Loehrke

WEATHER SUNNY

COUNTY OTTAWA

HANES

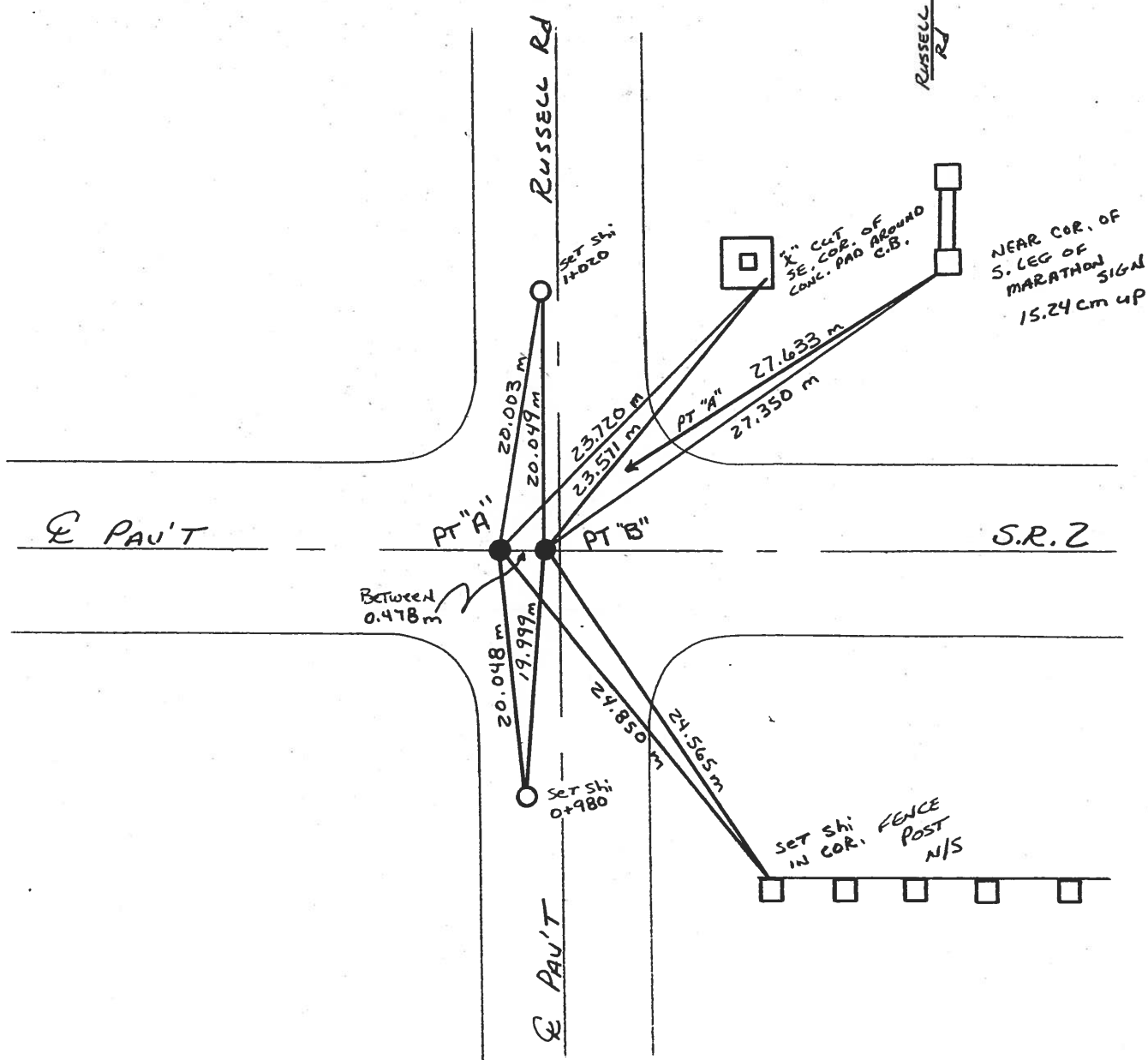
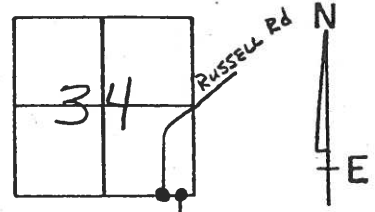
TEMP. +26.6°C

TOWNSHIP CARROLL

SECTION 34

T8 N R 15 E

TYPE MONUMENT	<u>P.K. NAIL</u>	<u>P.K. WASHER</u>
ON SURFACE - BELOW	<u>yes</u>	<u>yes</u>
LEFT - C PAV'T. - SET	<u>10.16 cm</u>	<u>10.16 cm</u>
<u>3.73 m TO LT EDGE PAVEMENT</u>		<u>3.73 TO RT EDGE</u>
S.L.M.		



O.D.O.T. DISTRICT 2 SURVEY OFFICE

PERSONNEL _____

REFERENCE NO. _____

SHEET 25 OF 26

NOTES BARNHISEL

H.C. CORDES

R.C. HANES

DATE 7-22-96

WEATHER SUNNY

TEMP. +24°C

ROUTE 2

COUNTY OTTAWA

TOWNSHIP CARROLL

SECTION 34

T 8 N R 15 E

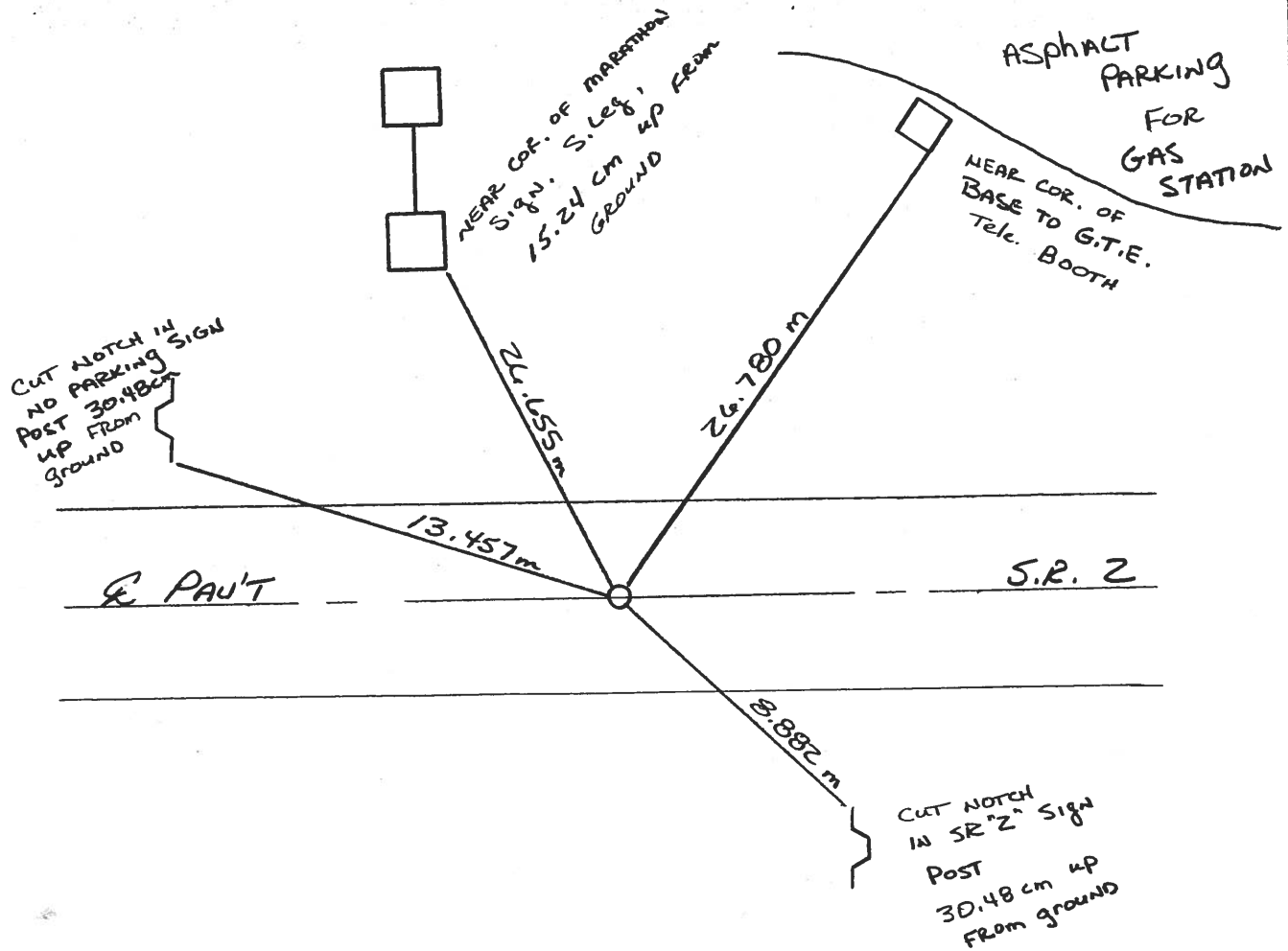
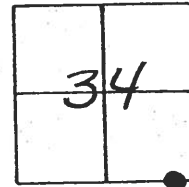
TYPE MONUMENT P.I.K. NAIL

ON SURFACE - ~~BELOW~~ yes

~~BELOW~~ - E PAV'T. - ~~BELOW~~ yes

3.90m TO RT EDGE PAVEMENT

S.L.M. 14+765.288



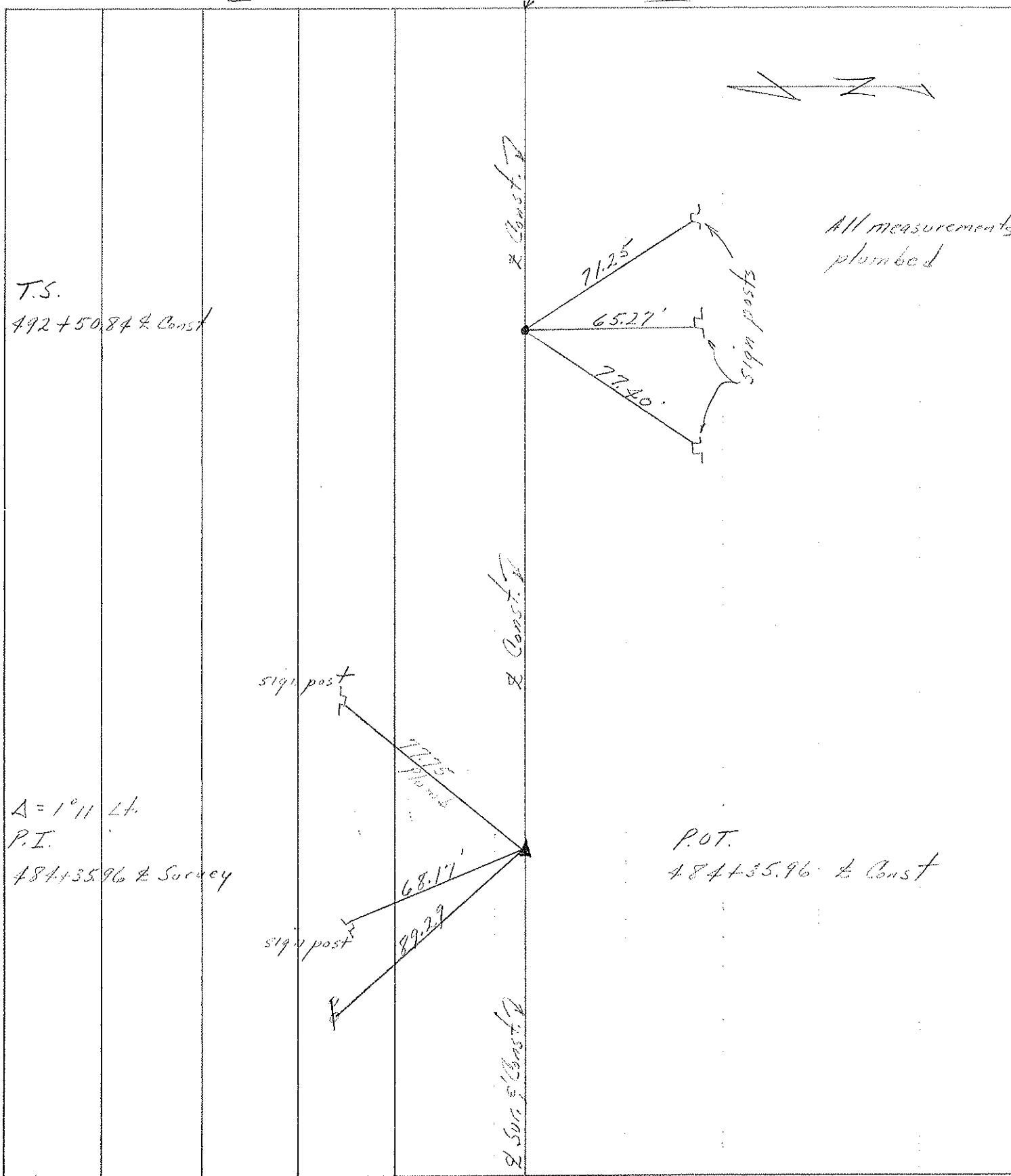
PERSONNEL	TITLE	PERSONNEL	TITLE
Crowin		Schneider	
Geyman		Messer	
		Barbour	

COUNTY Ottawa DATE 7/20/76

S. R. # 2 Rebo. WEATHER sunny

SEC. 011. 2-9.17 TEMP. 86°

DESCRIPTION Ties for Control Points JOB NO. 029320



PERSONNEL TITLE PERSONNEL TITLE

COUNTY Ottawa

DATE 10-21-74
7-17-74

S. R. 2

WEATHER Sunny

SEC. Bark Inn Curve TEMP. 85°

DESCRIPTION Carroll Twp. S.R. # 19 East JOB NO.

