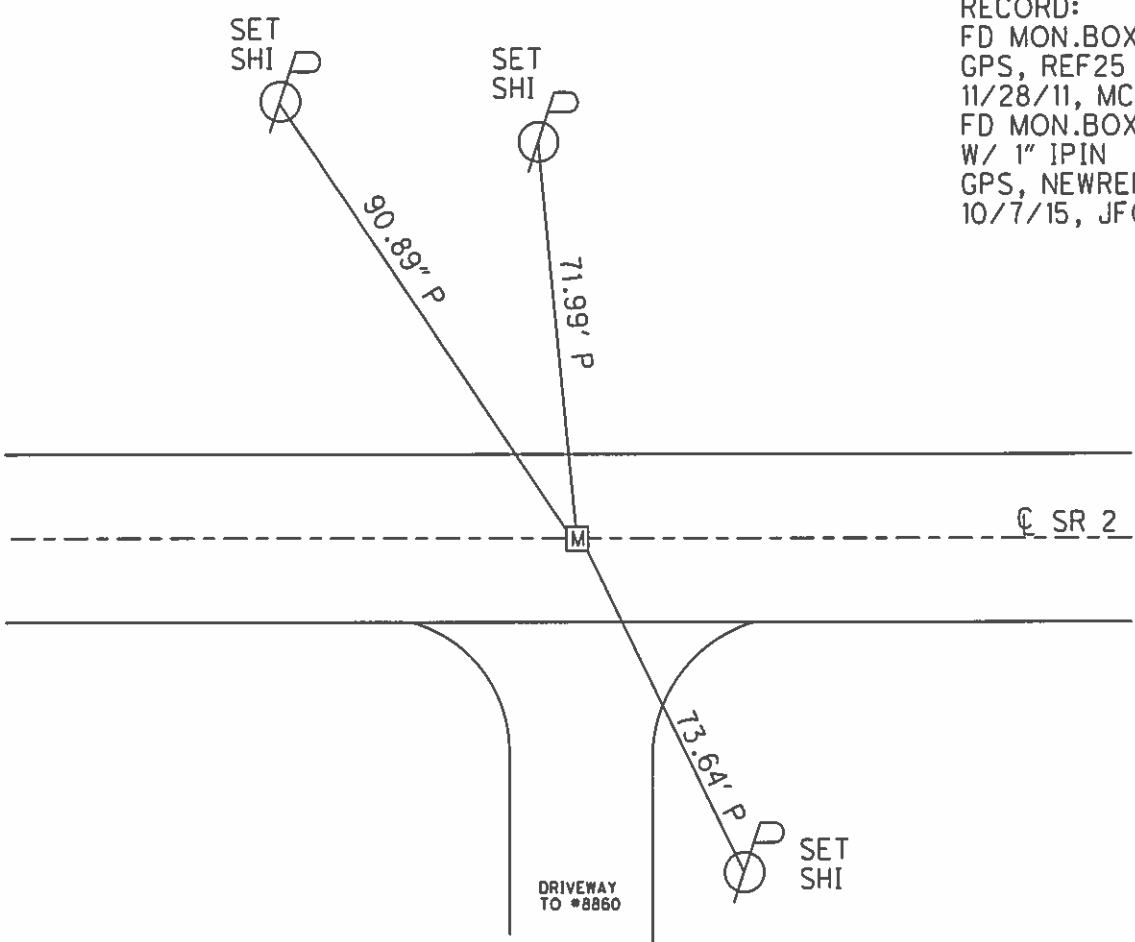
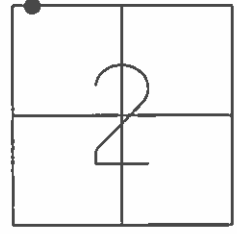


O.D.O.T. DISTRICT 2 SURVEY OFFICE (USE ONLY)

PERSONNEL \_\_\_\_\_ REFERENCE NO. 25 SHEET 33 OF 38  
 NOTES RHOADES DATE 5/7/13 ROUTE SR 2  
 H.C. CODER WEATHER CLOUDY COUNTY OTTAWA  
 R.C. RHOADES TEMP. 65° TOWNSHIP CARROLL  
 \_\_\_\_\_ SECTION 2  
 \_\_\_\_\_ T 7 N R 15 E

TYPE MONUMENT MON.BOX  
 ON SURFACE - ~~BELOW~~ ON \_\_\_\_\_  
 LEFT - ☉ PAV'T - RIGHT ON \_\_\_\_\_  
17.6' TO RT EDGE PAVEMENT  
 S.L.M. 487+73.20  
 GRID: NORTHING: 706261.329 EASTING: 1802984.953



RECORD:  
 FD MON.BOX  
 GPS, REF25  
 11/28/11, MC  
 FD MON.BOX  
 W/ 1" IPIN  
 GPS, NEWREF25  
 10/7/15, JFO