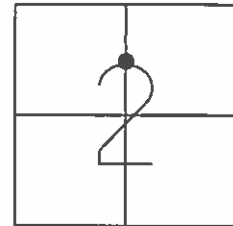


O.D.O.T. DISTRICT 2 SURVEY OFFICE (USE ONLY)

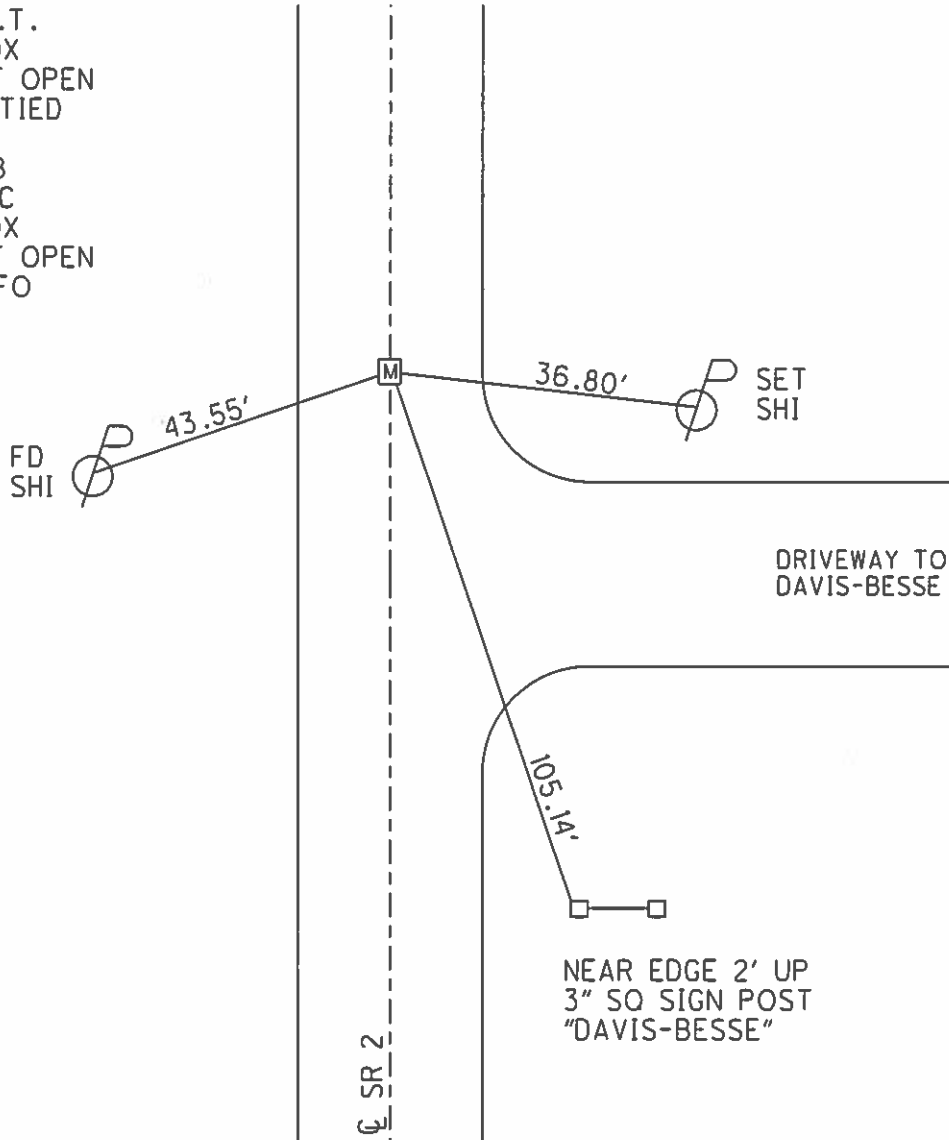
PERSONNEL _____ REFERENCE NO. 28 SHEET 36 OF 38
 NOTES RHOADES DATE 5/7/13 ROUTE SR 2
 H.C. CODER WEATHER CLOUDY COUNTY OTTAWA
 R.C. RHOADES TEMP. 65° TOWNSHIP CARROLL
 _____ SECTION 2
 _____ T 7 N R 15 E

TYPE MONUMENT MON.BOX
 ON SURFACE - ~~BELOW~~ ON _____
 LEFT - ☉ PAV'T - RIGHT ON _____
13.12' TO RT EDGE PAVEMENT
 S.L.M. 521+83.74



GRID: NORTHING: 704402.514 EASTING: 1805265.032

RECORD: P.T.
 FD MON.BOX
 COULD NOT OPEN
 SHOT AND TIED
 CTR LID
 GPS, REF28
 11/28/11, MC
 FD MON.BOX
 COULD NOT OPEN
 10/7/15, JFO



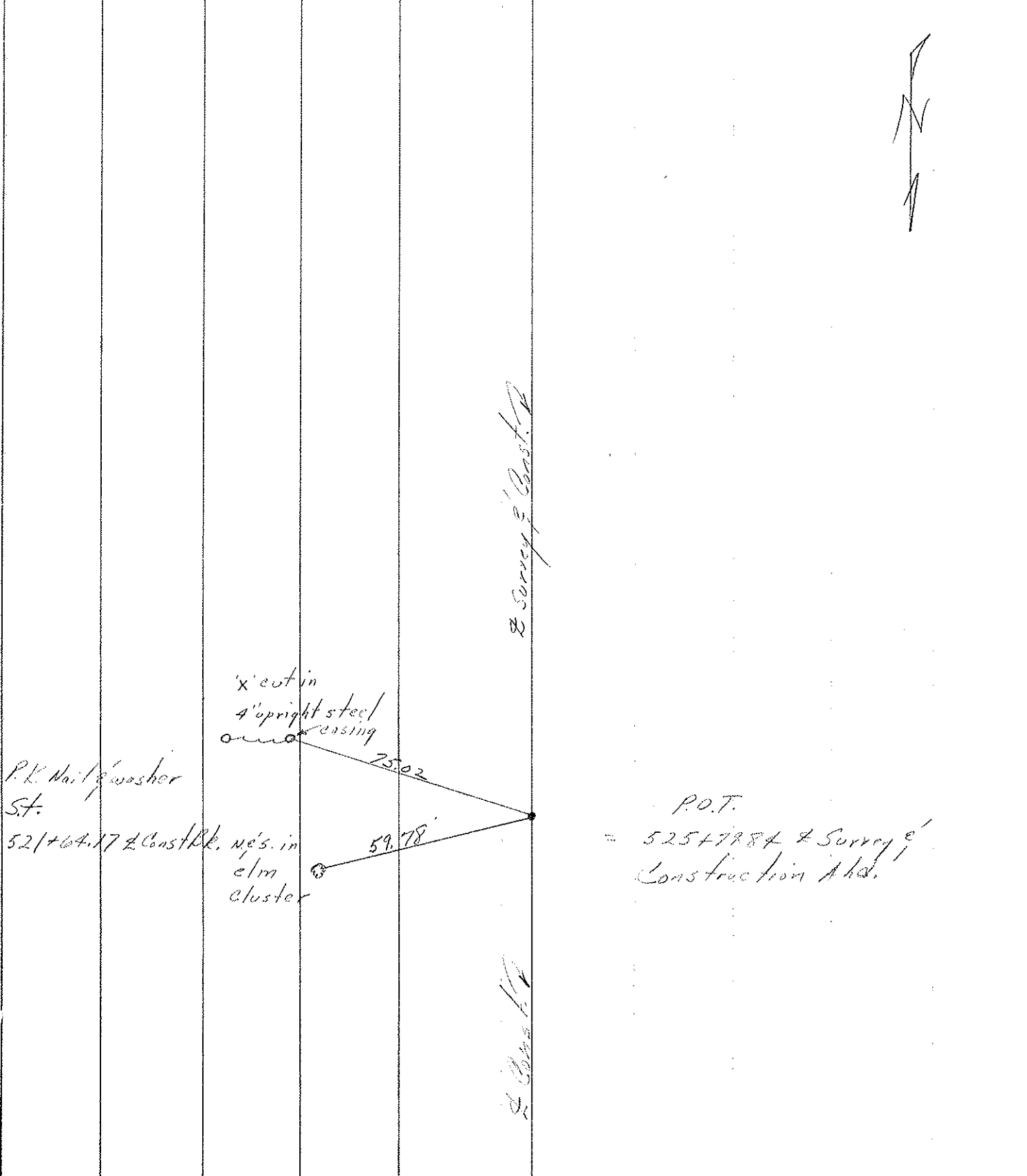
NEAR EDGE 2' UP
 3" SQ SIGN POST
 "DAVIS-BESSE"

PERSONNEL	TITLE	PERSONNEL	TITLE
Cronin		Schneider	
Geyman		Masser	
		Barbour	

COUNTY Ottawa DATE 7/22/76
 S. R. # 2 - Beloe WEATHER SUNNY
 SEC 011. 2 - 9.17 TEMP. 80°

DESCRIPTION Ties for Control Points JOB NO. 029330

LEFT CENTER LINE RIGHT



P.K. Nail & washer
St.

521+64.17 Const. Pk. ne's. in
elm cluster

'x' cut in
4' upright steel
and casing

Survey & Const. Co.

P.O.T.

P.O.T.
= 525+7984 & Survey & Const. Co.

PERSONNEL TITLE PERSONNEL TITLE

COUNTY Ottawa DATE 11-6-74 7-18-74

S. R. R WEATHER SUNNY

SEC. Bark Inn Curve TEMP. 85°

DESCRIPTION Carroll Twp S.R. # 19 E. JOB NO.

