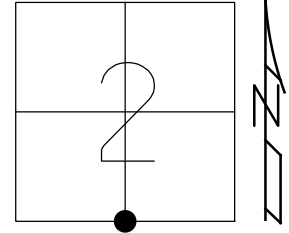


O.D.O.T. DISTRICT 2 SURVEY OFFICE (USE ONLY)

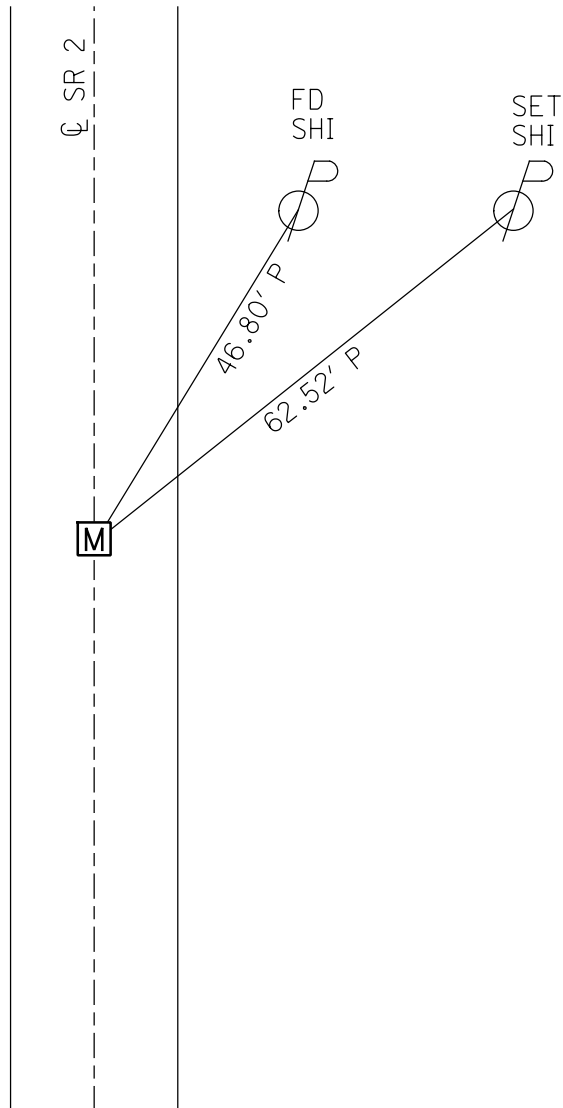
PERSONNEL _____ REFERENCE NO. 30 SHEET 1 OF 25
 NOTES RHOADES DATE 5/7/13 ROUTE SR 2
 H.C. CODER WEATHER CLOUDY COUNTY OTTAWA
 R.C. RHOADES TEMP. 65° TOWNSHIP CARROLL
 DWG BY NIESE PID 95755 SECTION 2
 T 7 N R 15 E

TYPE MONUMENT MONBOX
 ON SURFACE - ~~BELOW~~ ON
 OFFSET Q PAVEMENT ON ~~LT~~ : ~~RT~~
11.6' TO RT EDGE PAVEMENT
 STATION: 557+49.60

HORZ. DATUM: NAD83(2011) GEOID: 2012A
 GRID: NORTHING: 700822.851 EASTING: 1805287.172



RECORD: P.I.
 STA 561+59.56
 FD BRASS MON
 2" DOWN
 3/19/80, BARBOUR
 FD MONBOX
 REF30
 11/28/11, MC
 FD MONBOX
 W/ 1" IPIN
 REF22
 4/1/19, JFO
 FD MONBOX
 W/ 1" IPIN
 REF30
 2-8-23, TDN



O.D.O.T. DISTRICT 2 SURVEY OFFICE (USE ONLY)

PERSONNEL

REFERENCE NO. 30

SHEET 1 OF 25

NOTES RHOADES

DATE 5/7/13

ROUTE SR 2

H.C. CODER

WEATHER CLOUDY

COUNTY OTTAWA

R.C. RHOADES

TEMP. 65°

TOWNSHIP CARROLL

DWG BY NIESE PID 107060

SECTION 2

T 7 N R 15 E

TYPE MONUMENT MONBOX

ON SURFACE - ~~BELOW~~ ON

OFFSET Q PAVEMENT ON RT : RT

11.6' TO RT EDGE PAVEMENT

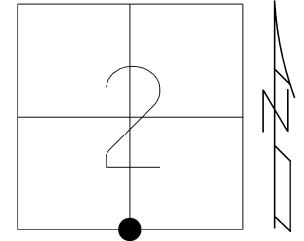
STATION: 557+49.60

HORZ.DATUM: NAD83(2011)

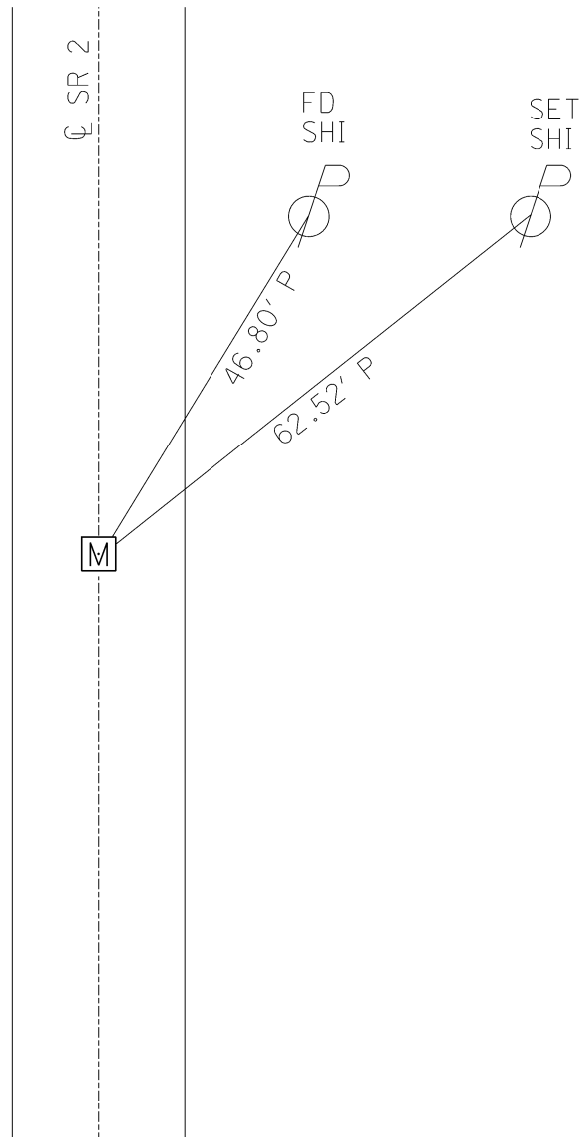
GEOID: 2012A

GRID: NORTHING: 700822.851

EASTING: 1805287.172



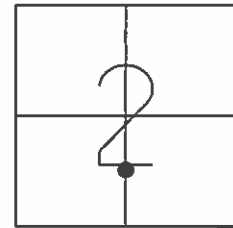
RECORD: P.I.
 STA 561+59.56
 FD BRASS MON
 2" DOWN
 3/19/80, BARBOUR
 FD MONBOX
 REF 30
 11/28/11, MC
 FD MONBOX
 W/ 1" IPIN
 REF 22
 4/1/19, JFO



O.D.O.T. DISTRICT 2 SURVEY OFFICE (USE ONLY)

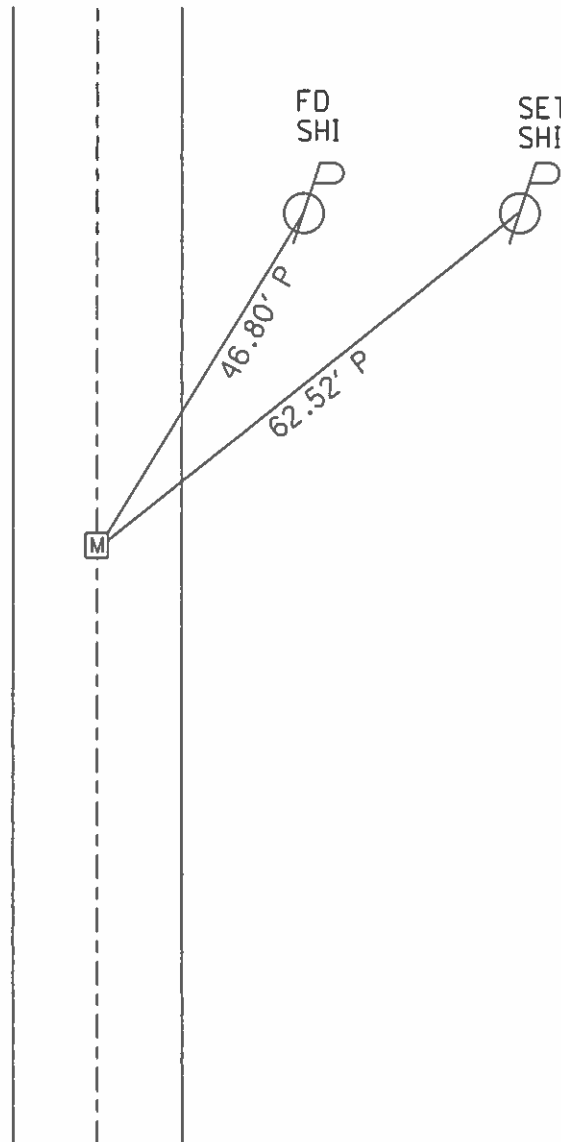
PERSONNEL _____ REFERENCE NO. 30 SHEET 38 OF 38
 NOTES RHOADES DATE 5/7/13 ROUTE SR 2
 H.C. CODER WEATHER CLOUDY COUNTY OTTAWA
 R.C. RHOADES TEMP. 65° TOWNSHIP CARROLL
 _____ SECTION 2
 _____ T 7 N R 15 E

TYPE MONUMENT MON.BOX
 ON SURFACE - ~~BELOW~~ ON _____
 LEFT - ☉ PAV'T - RIGHT ON _____
11.6' TO RT EDGE PAVEMENT
 S.L.M. 557+63.46



GRID: NORTHING: 700822.878 EASTING: 1805287.088

RECORD: P.O.T.
 FD MON.BOX
 GPS, REF30
 11/28/11, MC



OD.OT. DISTRICT 2 SURVEY OFFICE

Sht. ___ of ___

County Ottawa S.R. #2

Date 3-19-80

Township Carroll

Weather Fair

Section 2

Temp. 35°

T7N, R15E

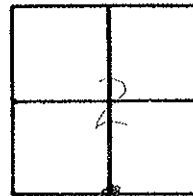
Personnel schneider

Mosser

Barbour

Ripple

Geyman



#22



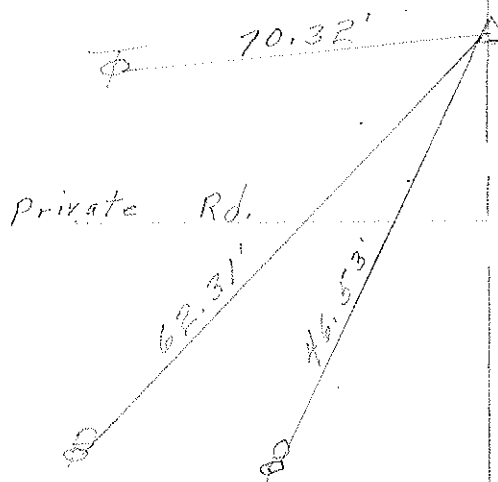
§ S.R. 2

P.I.

561759.56

Brass Mon.

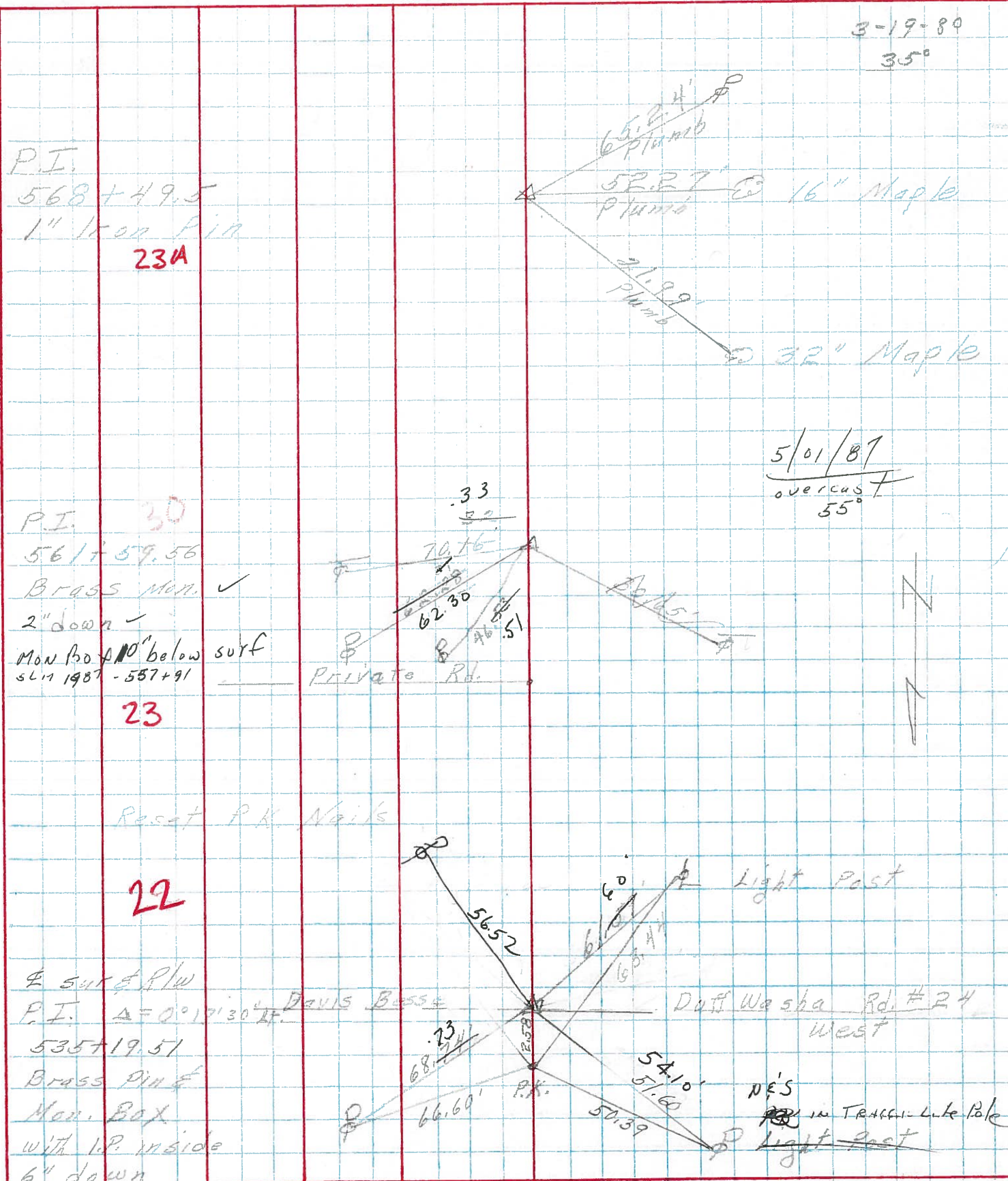
2" down



PERSONNEL	TITLE	PERSONNEL	TITLE
Schneider			
Barbour			
Ripple			
Geyman			

COUNTY Ottawa DATE 7-18-74
 S. R. 2 WEATHER SUNNY
 SEC. 2 TEMP 85°

DESCRIPTION Carroll Twp SR.# 19 E. JOB NO. _____



PERSONNEL TITLE PERSONNEL TITLE

Schneider

Potts

COUNTY Ottawa

DATE 6-13-68

Mosser

S. R. 2

WEATHER Fair

Barbour

SEC. S.R.#19 East

TEMP. 68°

Redding

DESCRIPTION

Ties for Control Points

JOB NO.

LEFT

CENTER LINE

RIGHT

