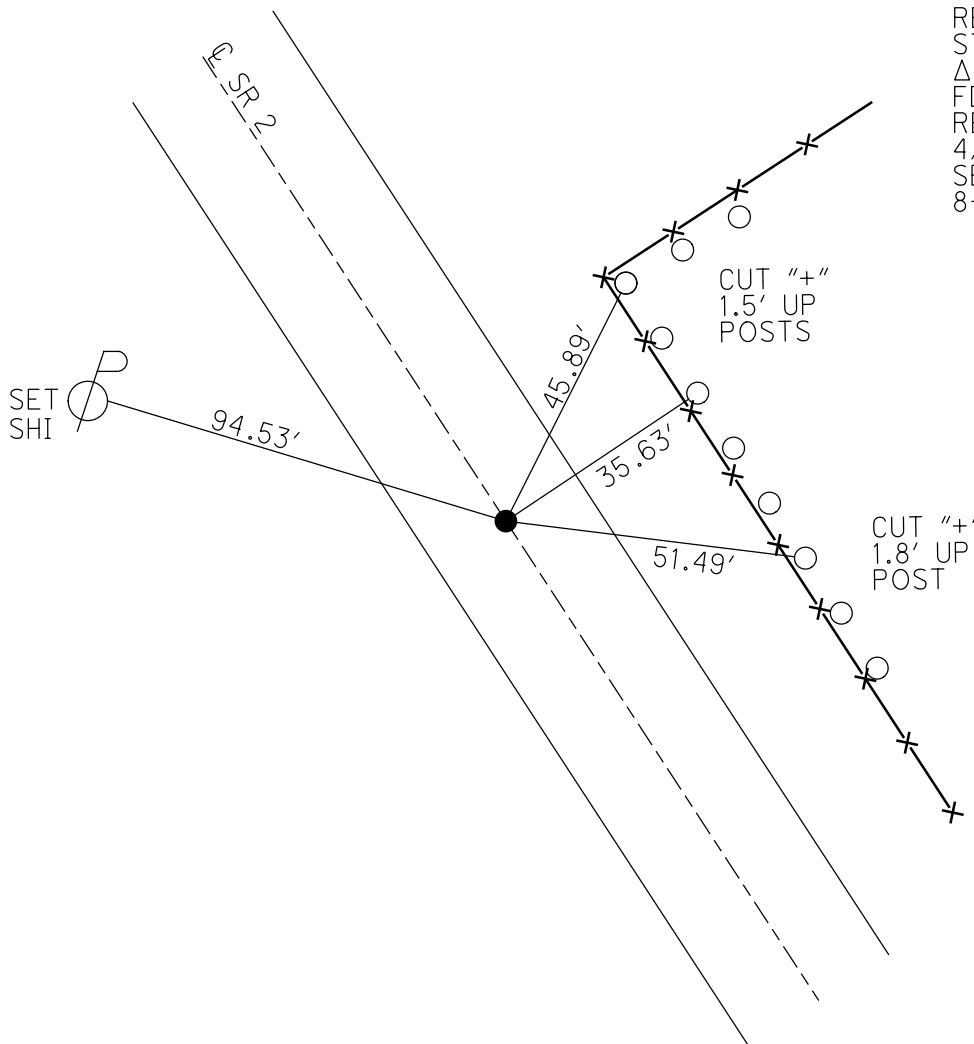
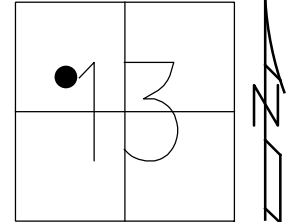


O.D.O.T. DISTRICT 2 SURVEY OFFICE (USE ONLY)

PERSONNEL _____ REFERENCE NO. 30 F SHEET 7 OF 25
 NOTES RHOADES DATE 8-15-23 ROUTE SR 2
 H.C. AUBLE WEATHER CLOUDY COUNTY OTTAWA
 R.C. NIESE TEMP. 72° TOWNSHIP CARROLL
 DWG BY NIESE PID 95755 SECTION 13
 T 7 N R 15 E

TYPE MONUMENT MAG/WASHER
 ON SURFACE - ~~BELOW~~ ON
 OFFSET CL PAVEMENT ON LT : RT
11.9' TO RT EDGE PAVEMENT
 STATION: 640+83.11

HORZ. DATUM: NAD83(2011) GEOID: 2012A
 GRID: NORTHING: 693568.890 EASTING: 1809219.235



RECORD:
 STA 73+27.30
 $\Delta = 0^\circ 18' \text{ LT}$
 FD HOLE
 REFB24
 4/24/19, JFO
 SET MAG/WASHER
 8-15-23, DSA

O.D.O.T. DISTRICT 2 SURVEY OFFICE (USE ONLY)

PERSONNEL

REFERENCE NO. 30 F

SHEET 7 OF 25

NOTES BARNHISEL

DATE 3/22/96

ROUTE SR 2

H.C. HUSS

WEATHER CLOUDY

COUNTY OTTAWA

R.C. CANTERBURY

TEMP. 25°

TOWNSHIP CARROLL

SECTION 13

DWG BY NIESE PID 107060

T 7 N R 15 E

TYPE MONUMENT P.K./WASHER

ON SURFACE - ~~BELOW~~ ON

OFFSET ☐ PAVEMENT ON LT : RT

11.9' TO RT EDGE PAVEMENT

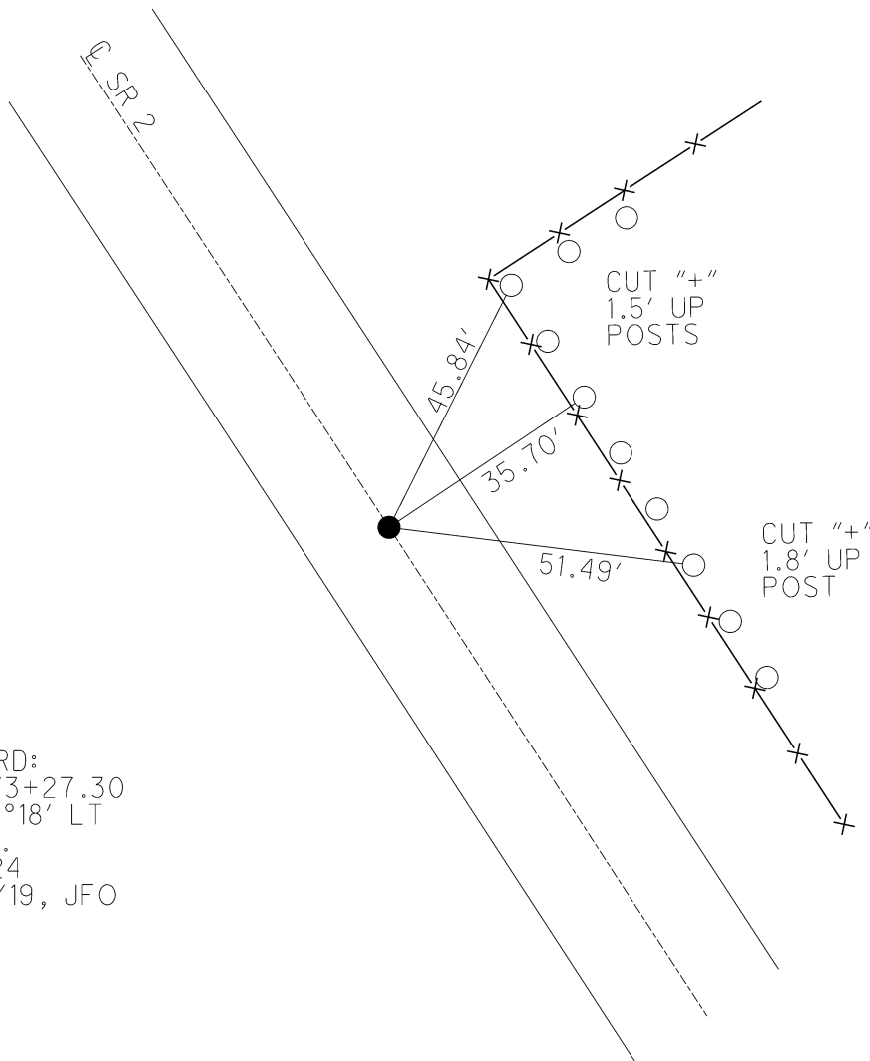
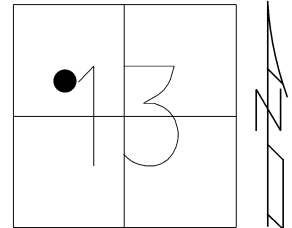
STATION: 640+83.11

HORIZ.DATUM: NAD83(2011)

GEOID: 2012A

GRID: NORTHING: 693568.890

EASTING: 1809219.235



RECORD:
 STA 73+27.30
 $\Delta = 0^{\circ}18' \text{ LT}$
 D.N.F.
 REFB24
 4/24/19, JFO