

O.D.O.T. DISTRICT 2 SURVEY OFFICE (USE ONLY)

PERSONNEL \_\_\_\_\_ REFERENCE NO. 30 H SHEET 9 OF 25  
 NOTES RHOADES DATE 9-8-20 ROUTE SR 2  
 H.C. O'DONNELL WEATHER CLOUDY COUNTY OTTAWA  
 R.C. AUBLE TEMP. 70° TOWNSHIP CARROLL  
 DWG BY NIESE PID 95755 SECTION 13  
 T 7 N R 15 E

TYPE MONUMENT P.K./SHANK

ON SURFACE - ~~BELOW~~ ON

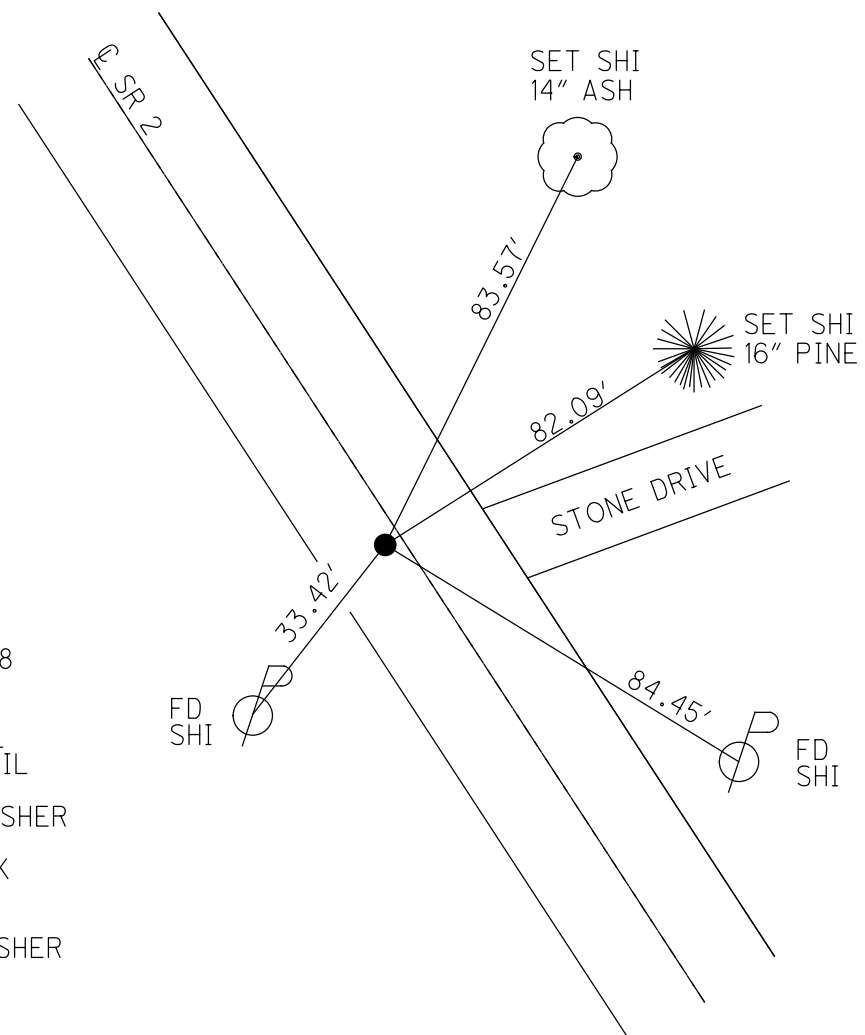
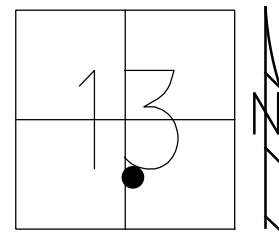
OFFSET 0.8' ~~±~~ : RT

11.2' TO RT EDGE PAVEMENT

STATION: 672+14 12.73 SLM

HORZ.DATUM: NAD83(2011) GEOID: 2012A

GRID: NORTHING: 691325.887 EASTING: 1810673.372



RECORD: P.I.  
 STA. 99+66.8  
 $\Delta = 0^\circ 18' \text{ LT}$   
 STA. 671+75  
 SET P.K.NAIL  
 ATOP P.K.NAIL  
 3/20/1980  
 SET P.K./WASHER  
 8/1/00, BVD  
 FD P.K.SHANK  
 REF26  
 4/1/19, JFO  
 SET MAG/WASHER  
 2-8-23, DSA

O.D.O.T. DISTRICT 2 SURVEY OFFICE (USE ONLY)

PERSONNEL

REFERENCE NO. 30 H

SHEET 9 OF 25

NOTES VAN DUSEN

DATE 6/2/00

ROUTE SR 2

H.C. CORDES

WEATHER CLOUDY

COUNTY OTTAWA

R.C. BROWN

TEMP. 70°

TOWNSHIP CARROLL

DWG BY NIESE PID 107060

SECTION 13

T 7 N R 15 E

TYPE MONUMENT P.K./WASHER

ON SURFACE - ~~BELOW~~ ON

OFFSET 11.2' TO RT PAVEMENT 0.8' RT : RT

11.2' TO RT EDGE PAVEMENT

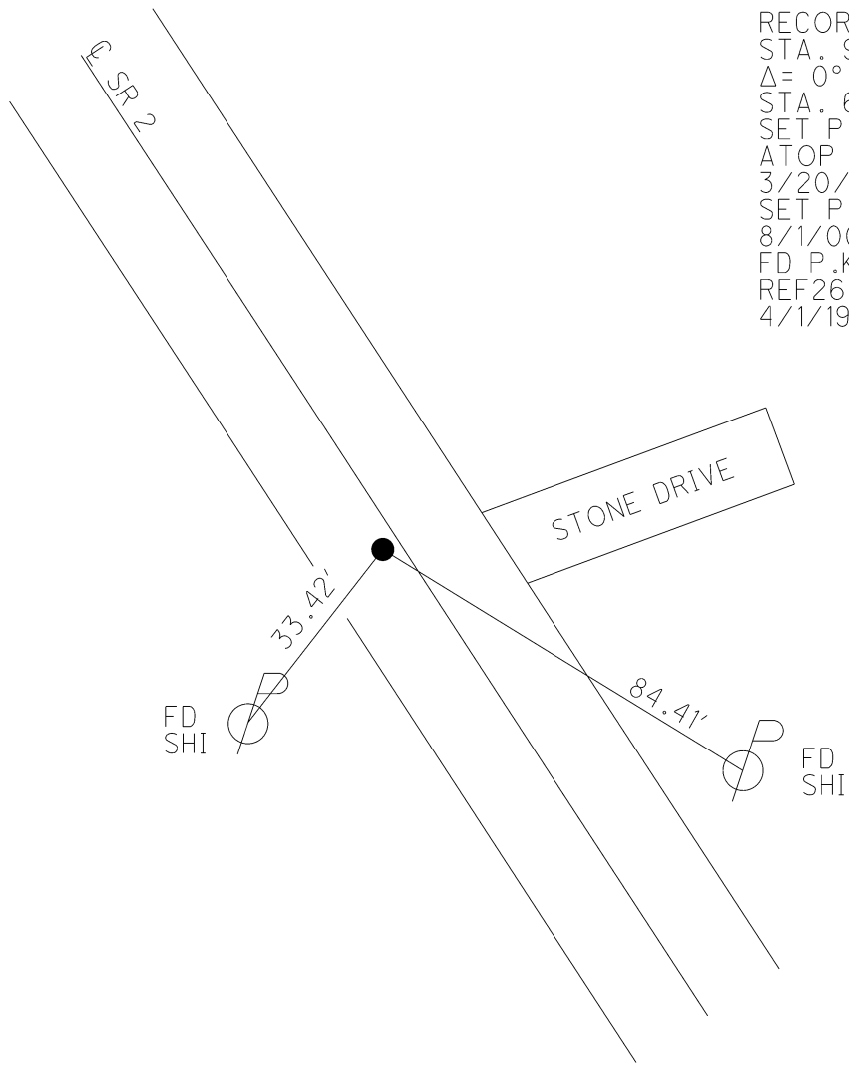
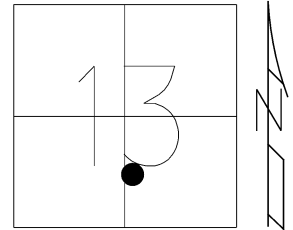
STATION: 672+14

HORZ.DATUM: NAD83(2011)

GEOID: 2012A

GRID: NORTHING: 691325.887

EASTING: 1810673.372



RECORD: P.I.  
STA. 99+66.8  
 $\Delta = 0^\circ 18' \text{ LT}$   
STA. 67'+75  
SET P.K.NAIL  
ATOP P.K.NAIL  
3/20/1980  
SET P.K./WASHER  
8/1/00, BVD  
FD P.K.SHANK  
REF 26  
4/1/19, JFO

O.D.O.T. DISTRICT 2 SURVEY OFFICE

PERSONNEL

REFERENCE NO. 26

SHEET 3 OF 15

NOTES VAN DUSEN

H.C. CORDES

R.C. ADAM BROWN

DATE 6-2-2000

WEATHER CLOUDY

TEMP. +70°F

ROUTE 2

COUNTY OTTAWA

TOWNSHIP CARRALL

SECTION 13

T7 N R 15 E

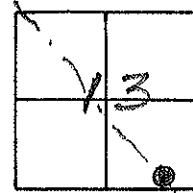
TYPE MONUMENT PK & WASHER

ON SURFACE - BELOW YES

LEFT- & PAV'T. - RIGHT 0.8'

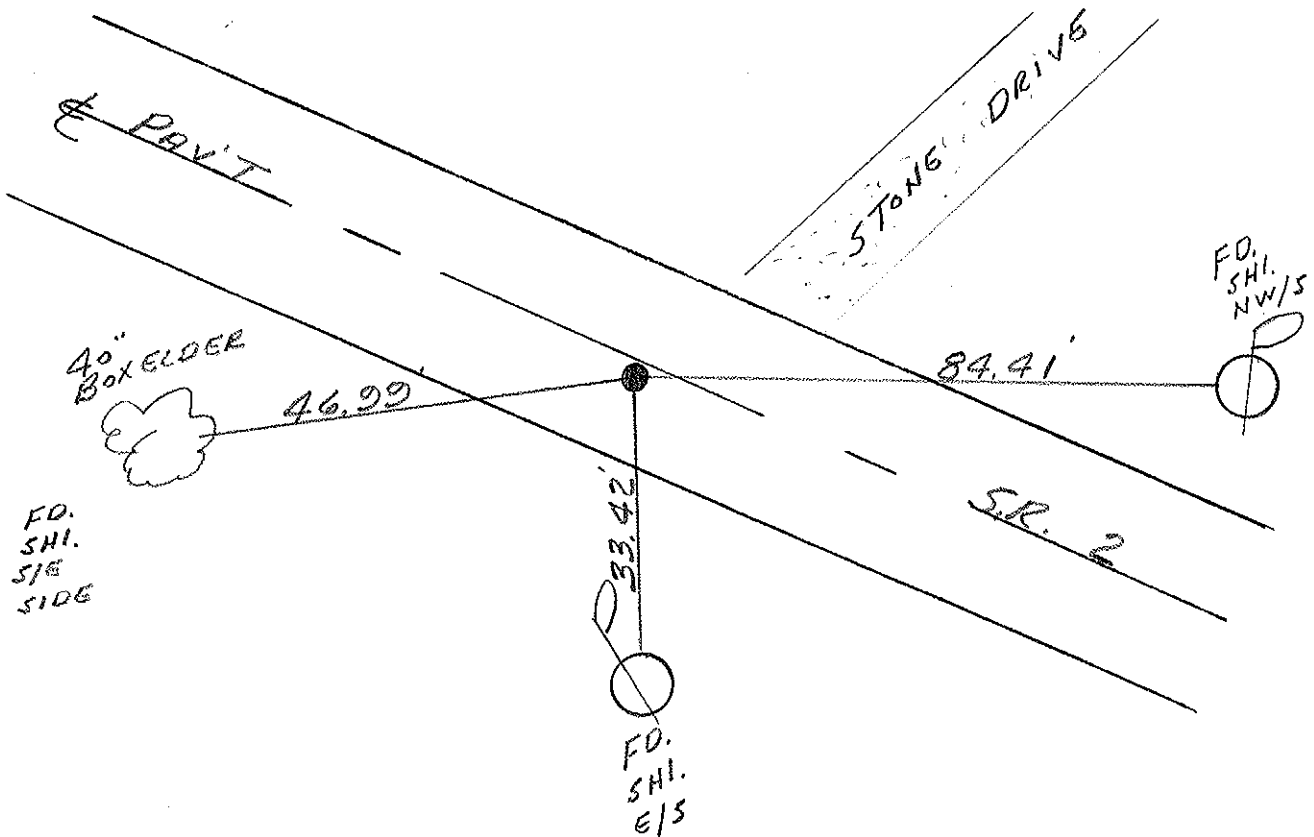
11.2 TO RT. EDGE PAVEMENT

S.L.M. 671+96



RECORD: 3-20-1980  
STA. 671+75  
SET P.K. NAIL ATOP  
P.K. NAIL

SET PK & WASHER  
8-1-00  
BVD



# O.D.O.T. DISTRICT 2 SURVEY OFFICE

PERSONNEL

REFERENCE NO. 26

SHEET 2 OF 13

NOTES CHENEY

H.C. RIPPLE

DATE 4-20-1993

ROUTE # 2

R.C. BARBOUR

WEATHER SUNNY

COUNTY OTTAWA

GEYMALI

TEMP. 60°

TOWNSHIP CARROLL

SECTION 13

T. 7 N R. 15 E

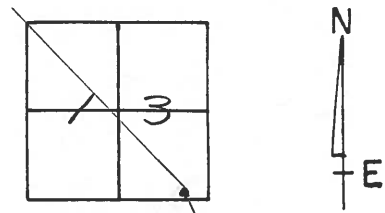
TYPE MONUMENT P.K./WASHER

ON SURFACE - ~~BELOW~~ ON

~~LEFT -~~ PAV'T. - RIGHT 0.8'

11.2' TO RT. EDGE PAVEMENT

S.L.M. 671+96



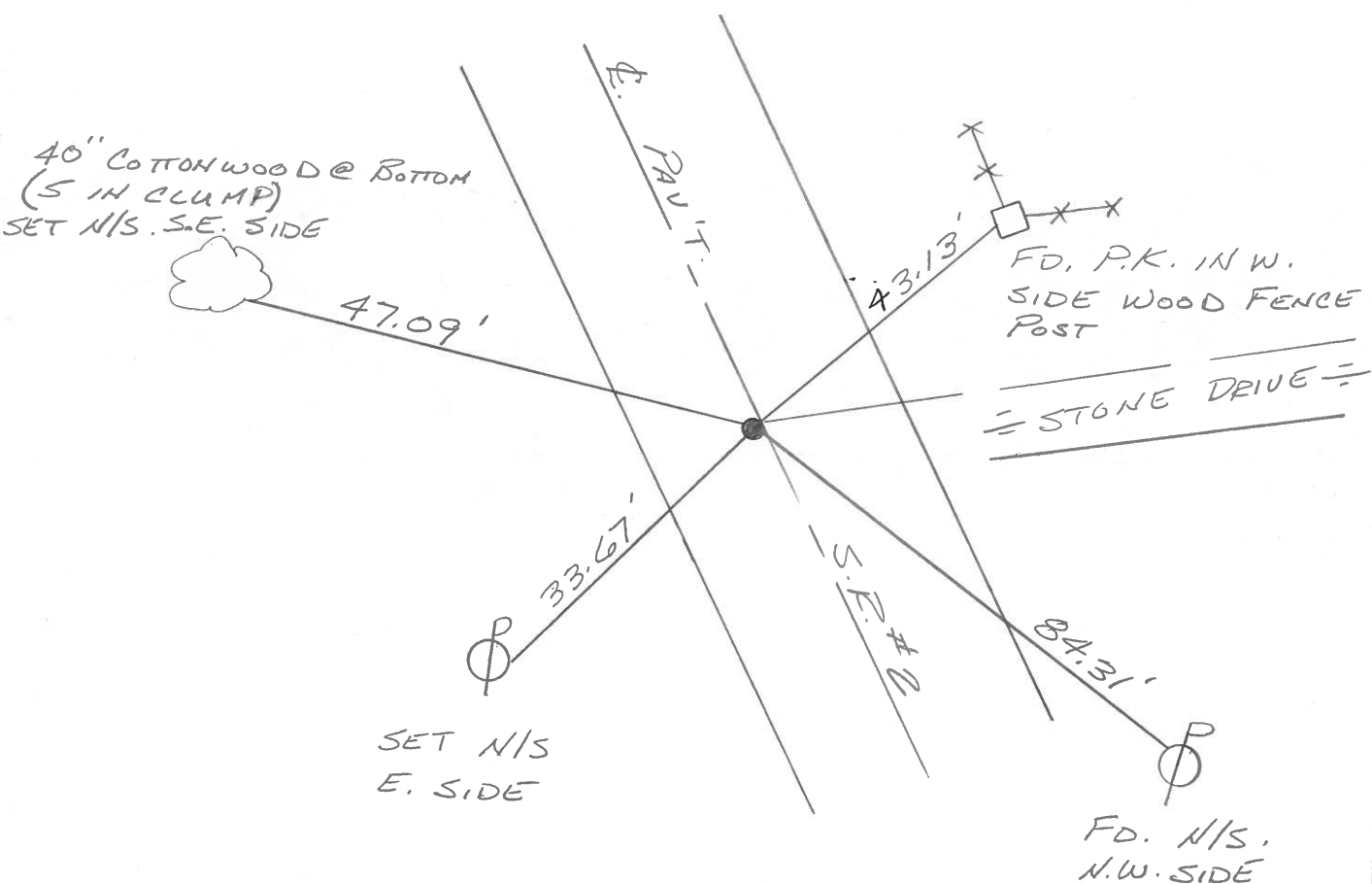
RECORD: 3-20-1980

STA. 671+75

SET P.K. NAIL ATOP

P.K. NAIL

SET P.K./WASHER  
6-14-1993  
RCC



Q.D.O.T. DISTRICT 2 SURVEY OFFICE

Sht. \_\_\_ of \_\_\_

County Ottawa S.R. #2

Date 3-20-80

Township Carroll

Weather Fair

Section 13

Temp. 40°

T<sub>7</sub>N, R<sub>15</sub>E

Personnel Schneider

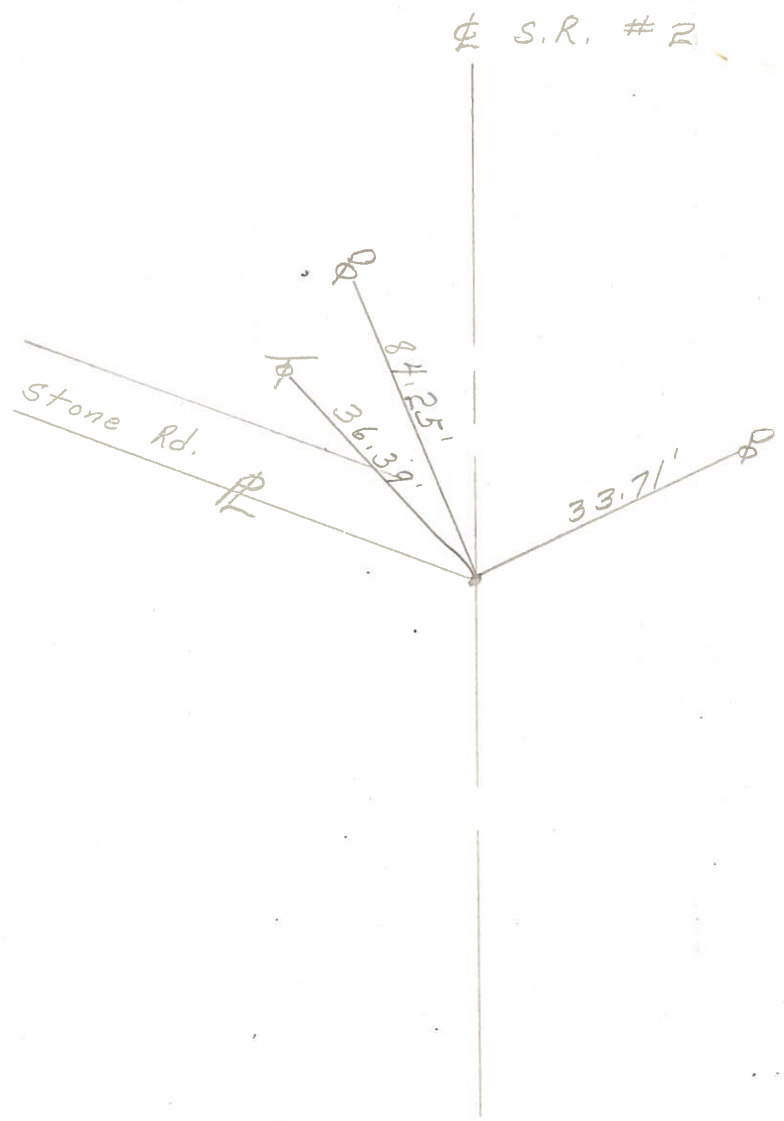
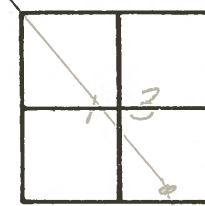
Mosser

Barbour

Ripple

Geyman

25  
26



671+75  
P.K. Nail  
Reset P.K. Nail  
8-5-80

PERSONNEL	TITLE	PERSONNEL	TITLE	COUNTY	DATE
Schneider		Bronin		Ottawa	7 2
Mosser		Ash		S. R. 2	WEATHER
Barbour		Rigole		SEC. 1	TEMP.
		Geyman			

DESCRIPTION Carroll Twp. JOB NO. \_\_\_\_\_

