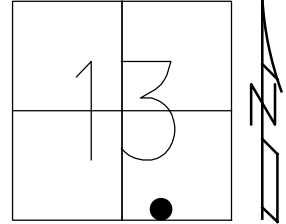


O.D.O.T. DISTRICT 2 SURVEY OFFICE (USE ONLY)

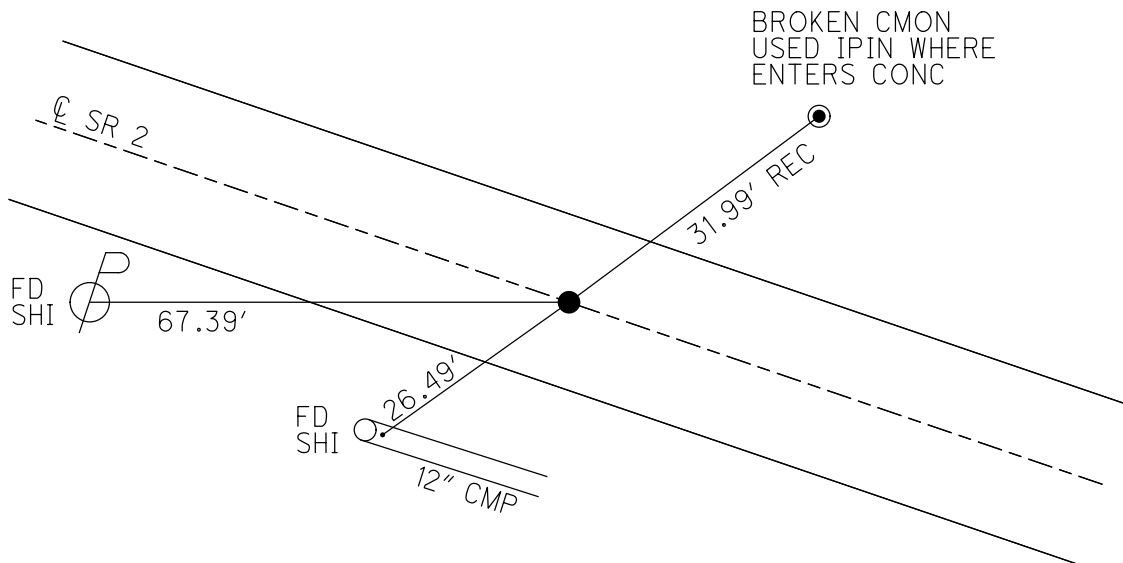
PERSONNEL \_\_\_\_\_ REFERENCE NO. 30 I SHEET 10 OF 25  
 NOTES VAN DUSEN DATE 6/2/00 ROUTE SR 2  
 H.C. CORDES WEATHER CLOUDY COUNTY OTTAWA  
 R.C. BROWN TEMP. 70° TOWNSHIP CARROLL  
 DWG BY NIESE PID 95755 SECTION 13  
 T 7 N R 15 E

TYPE MONUMENT P.K./WASHER  
 ON SURFACE - ~~BELOW~~ ON  
 OFFSET  $\odot$  PAVEMENT ON LT : RT  
12.0' TO RT EDGE PAVEMENT  
 STATION: 677+48.69



HORZ. DATUM: NAD83(2011) GEOID: 2012A  
 GRID: NORTHING: 690499.378 EASTING: 1811223.595

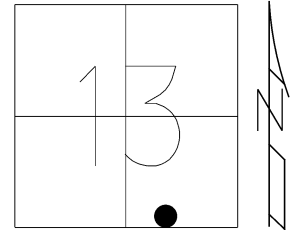
RECORD: P.O.T.  
 STA 682+07  
 SET P.K.NAIL  
 ATOP SM.SPIKE  
 SET P.K./WASHER  
 8/2/00, BVD  
 D.N.F.  
 TIES CROSSED  
 REF27  
 4/24/19, JFO  
 DID NOT SET  
 7-12-23, DSA



O.D.O.T. DISTRICT 2 SURVEY OFFICE (USE ONLY)

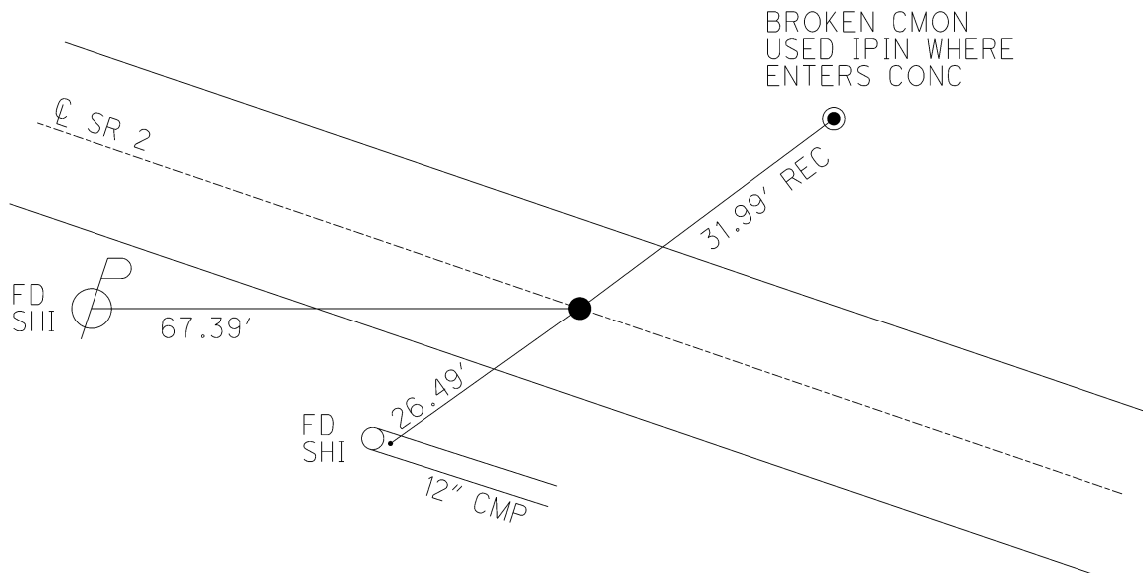
PERSONNEL \_\_\_\_\_ REFERENCE NO. 30 I SHEET 10 OF 25  
NOTES VAN DUSEN DATE 6/2/00 ROUTE SR 2  
H.C. CORDES WEATHER CLOUDY COUNTY OTTAWA  
R.C. BROWN TEMP. 70° TOWNSHIP CARROLL  
SECTION 13  
DWG BY NIESE PID 107060 T 7 N R 15 E

TYPE MONUMENT P.K./WASHER  
ON SURFACE - ~~BELOW~~ ON  
OFFSET  $\odot$  PAVEMENT ON LT : RT  
12.0' TO RT EDGE PAVEMENT  
STATION: 677+48.69



HORIZ.DATUM: NAD83(2011) GEOID: 2012A  
GRID: NORTHING: 690499.378 EASTING: 1811223.595

RECORD: P.O.T.  
STA 682+07  
SET P.K.NAIL  
ATOP SM.SPIKE  
SET P.K./WASHER  
8/2/00, BVD  
D.N.F.  
REF27  
4/24/19, JFO



O.D.O.T. DISTRICT 2 SURVEY OFFICE

PERSONNEL

REFERENCE NO. 27

SHEET 4 OF 15

NOTES VAN DUSEN

H.C. CORDES

R.C. ADAM BROWN

DATE 6-2-2000

WEATHER CLOUDY

TEMP. +70°F

ROUTE 2

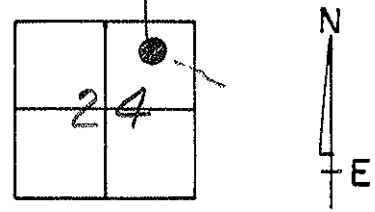
COUNTY OTTAWA

TOWNSHIP CARROLL

SECTION 24

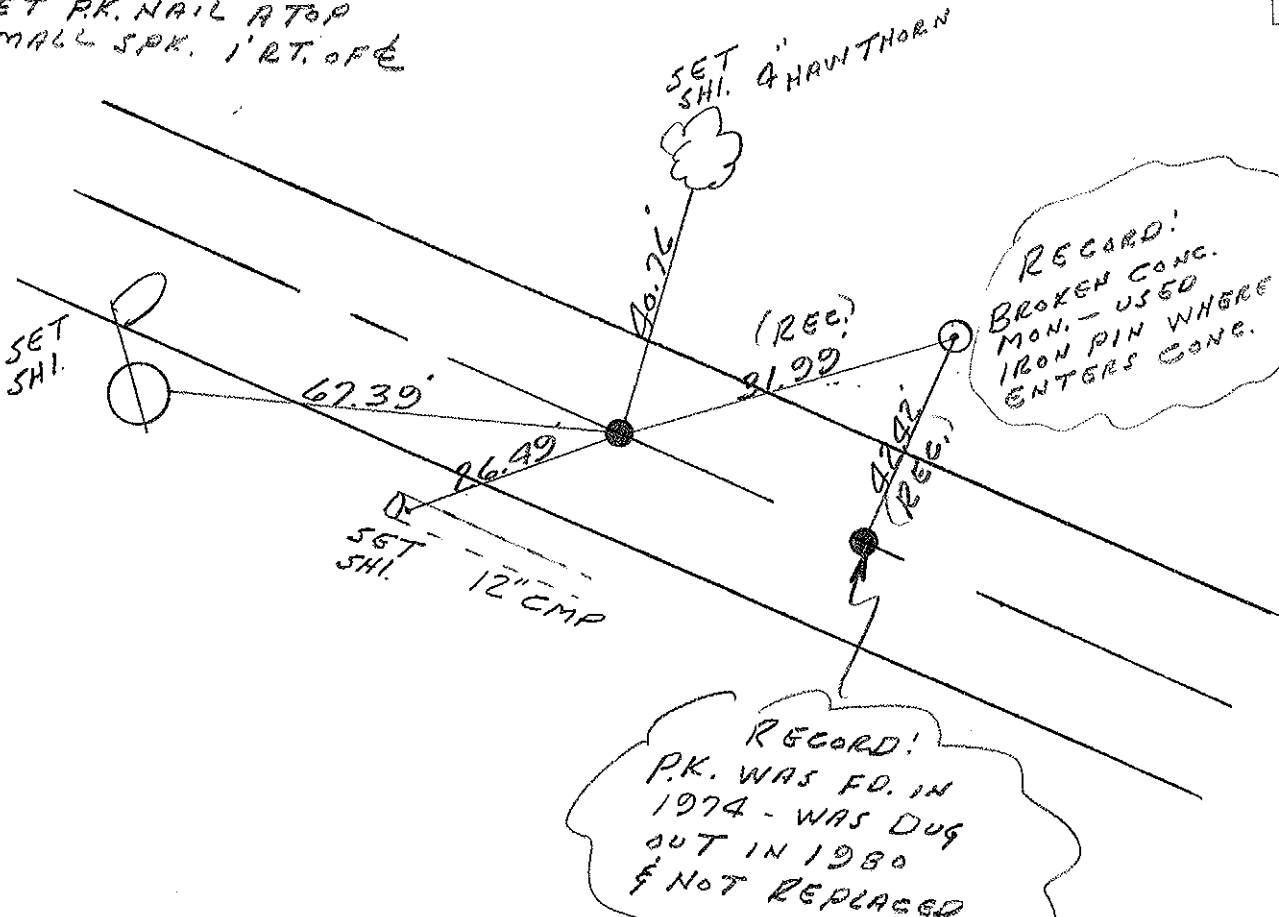
T. 7 N R. 15 E

TYPE MONUMENT PK & WASHER  
 ON SURFACE - BELOW YES  
 LEFT - & PAV'T. - RIGHT YES  
12' TO RT. EDGE PAVEMENT  
 S.L.M. 681+90



RECORD: 3-20-1980  
 STA. 682+07  
 P.O.T.  
 STA. 680+00 (PLAN)  
 STA. 681+66 S.L.M.  
 SET PK. NAIL ATOP  
 SMALL SPK. 1' RT. OF &

(SET PK & WASHER  
 8-2-00  
 BYD)



RECORD!  
 BROKEN CONC.  
 MON. - USED  
 IRON PIN WHERE  
 ENTERS CONC.

RECORD!  
 P.K. WAS FD. IN  
 1974 - WAS DUG  
 OUT IN 1980  
 & NOT REPLACED

# O.D.O.T. DISTRICT 2 SURVEY OFFICE

PERSONNEL

REFERENCE NO. 27

SHEET 3 OF 13

NOTES CHENEY

H.C. RIPPLE

R.C. BARBOUR

GEYMAN

DATE 4-20-1993

WEATHER SUNNY

TEMP. 65°

ROUTE 2

COUNTY OTTAWA

TOWNSHIP CARROLL

SECTION 24

T.7 N R.15 E

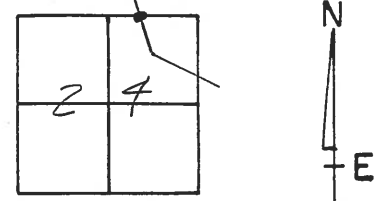
TYPE MONUMENT PK/WASHER

ON SURFACE - BELOW ON

~~LEFT~~ - ℄ PAV'T. - RIGHT ON

12' TO RT. EDGE PAVEMENT

S.L.M. 681+90



RECORDED: 3-20-1980

STA. 682+07

P.O.T.

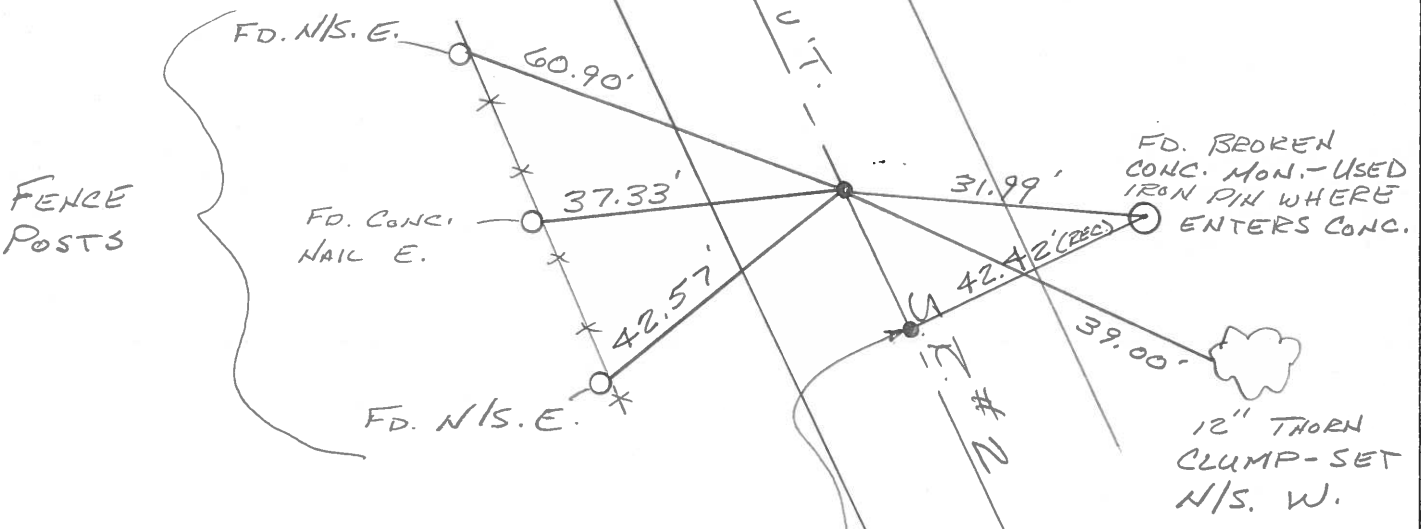
STA. 680+00 (PLAN)

STA. 681+66 S.L.M.

SET P.K. NAIL ATOP

SMALL SPK. (1' RT. OF ℄)

SET PK/WASHER  
6-14-1993  
RCC



\* P.K. WAS FD. IN  
1974 - WAS DUG  
OUT IN 1980  
& NOT REPLACED

Q.D.O.T. DISTRICT 2 SURVEY OFFICE

Sht. \_\_\_ of \_\_\_

County Ottawa S.R. #2

Date 3-20-80

Township Carroll

Weather Fair

Section 24

Temp. 40°

T7N, R15E

Personnel Schneider

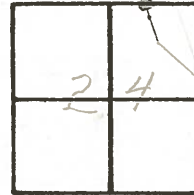
Mosser

Barbour

Ripple

Geyman

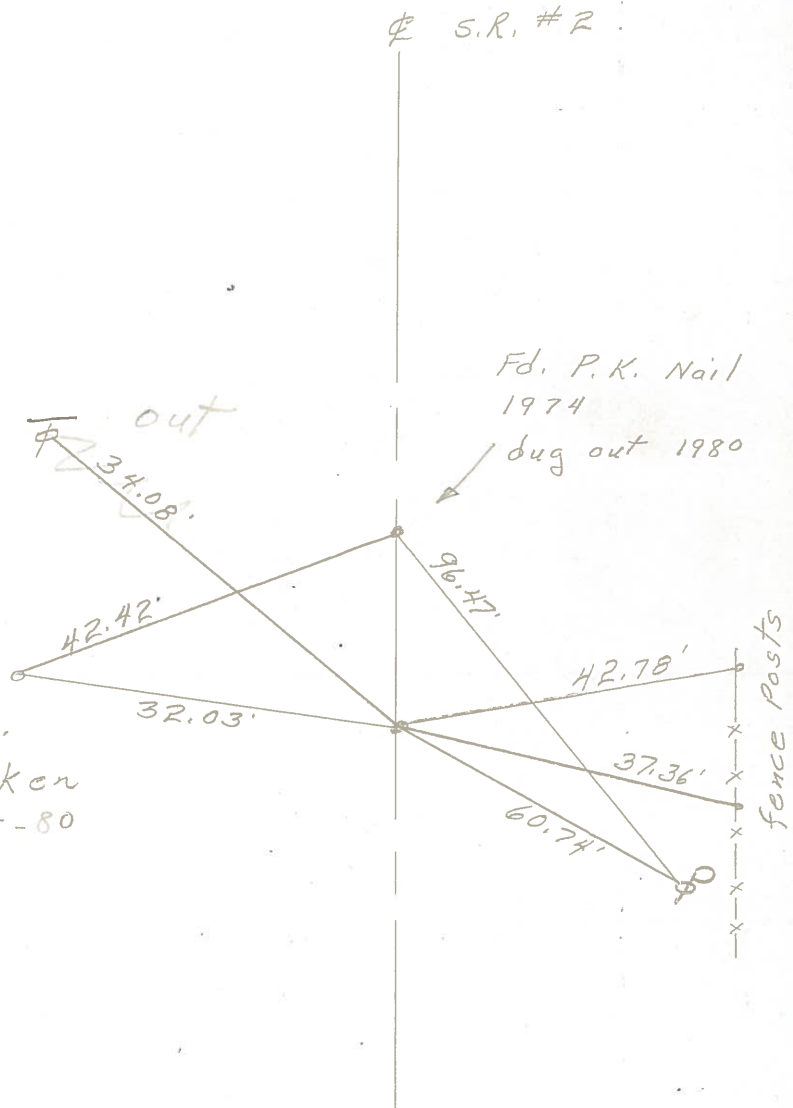
27



682+07  
1/4 RT of E

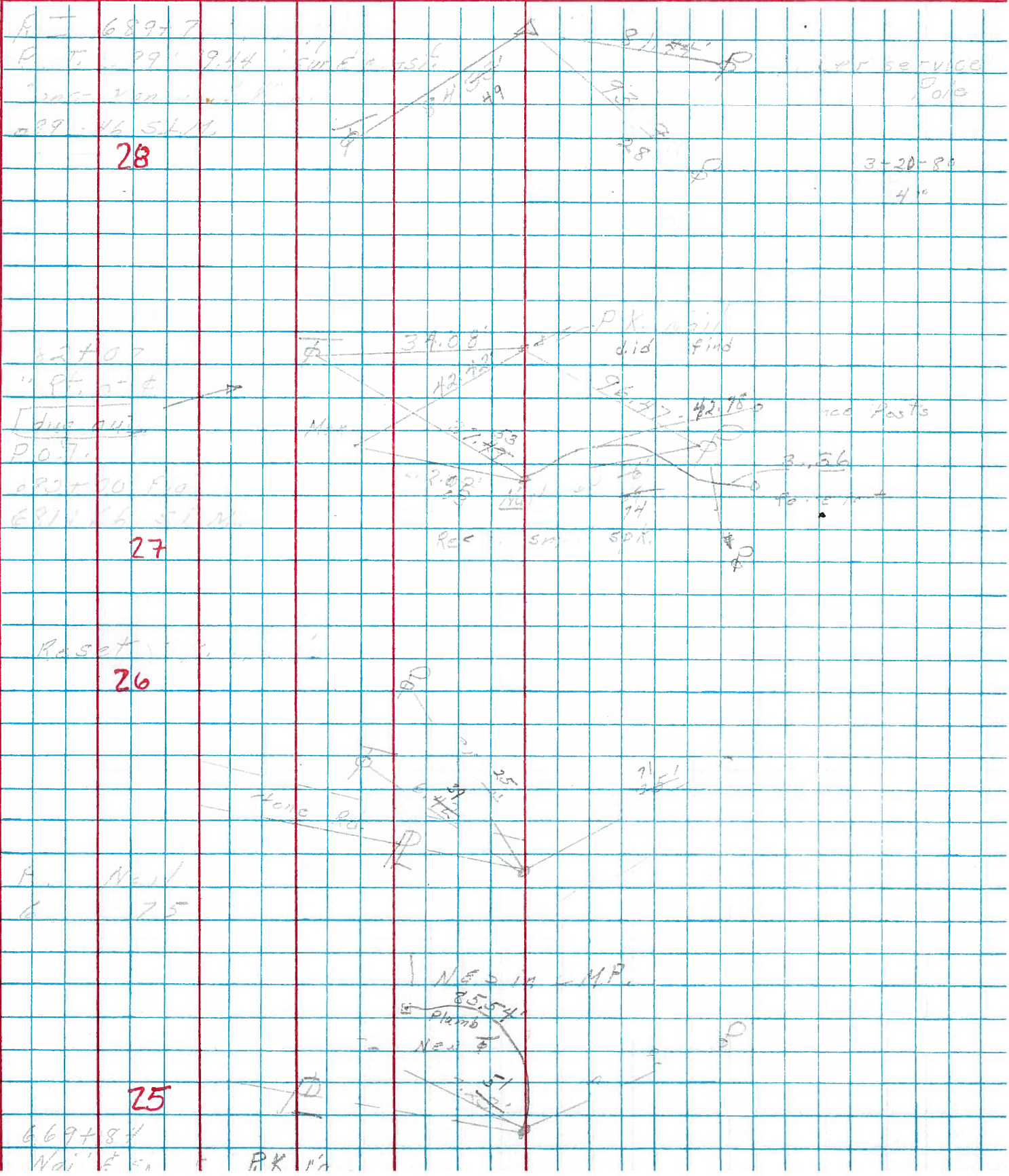
P.O.T.  
680+00 Plan  
681+66 SLM  
small spk.

Reset P.K. Nail  
9-5-80



PERSONNEL	TITLE	PERSONNEL	TITLE	COUNTY	DATE	S. R.	WEATHER	SEC.	TEMP.
Schneider		Bro		Ottawa	7	2			
Masser		Asi							
Barbour		R							
		G							

DESCRIPTION Carrol LEFT CENTER LINE RIGHT JOB NO.



Ties for PI Points - State Route #2  
(Continued)

	<u>Pt #18</u>	<u>Sta 640+83.11</u>	<u>PK &amp; Shiner</u>
	Face	End Chain Link Fence Post	NE = 45.81 feet
	PK	Power Pole	NW = 94.21 feet
	PK	SE Sign Post Leg 4"x4"	SW = 77.88 feet
	<u>Pt #20</u>	<u>Sta 667+56.23</u>	<u>PK Nail</u>
	Nail & Shiner	Power Pole	SE = 33.65 feet
26	Nail & Shiner	Power Pole	SW = 84.34 feet
	PK	Split-Rail Fence Post	ESE = 43.15 feet
	<u>Pt #523</u>	<u>Sta 685+28.27</u>	<u>PK &amp; Shiner</u>
28	SE Corner	3"x3" Catch Basin	ENE = 70.92 feet
	Nail & Shiner	Utility Pole	NE = 84.65 feet
	Nail & Shiner	Power Pole	NW = 93.44 feet
	<u>Pt #23</u>	<u>Sta 699+74.49</u>	<u>Iron Pin</u>
	Nail & Shiner	Power Pole	WSW = 57.75 feet
	PK	Power Pole w/Siren	NNW = 134.25 feet
	SW Corner	Concrete Base Guard Rail	NNE = 67.23 feet
	<u>Pt #554</u>	<u>Sta 711+16.68</u>	<u>PK &amp; Shiner</u>
36	NW Corner	Concrete Headwall	SW = 29.03 feet
	Nail & Shiner	Power Pole	NW = 63.43 feet
	SE Corner	Catch Basin	NNW = 27.48 feet
	Concrete	R/W Marker	S = 29.99 feet
	<u>Pt #616</u>	<u>Sta 772+78.39</u>	<u>PK Nail</u>
37	Concrete	R/W Marker	S = 30.14 feet
	Concrete	R/W Marker	N = 30.24 feet
	PK	Power Pole	NE = 90.19 feet