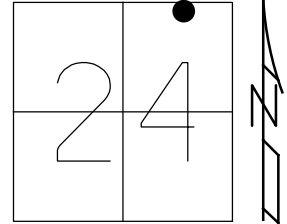


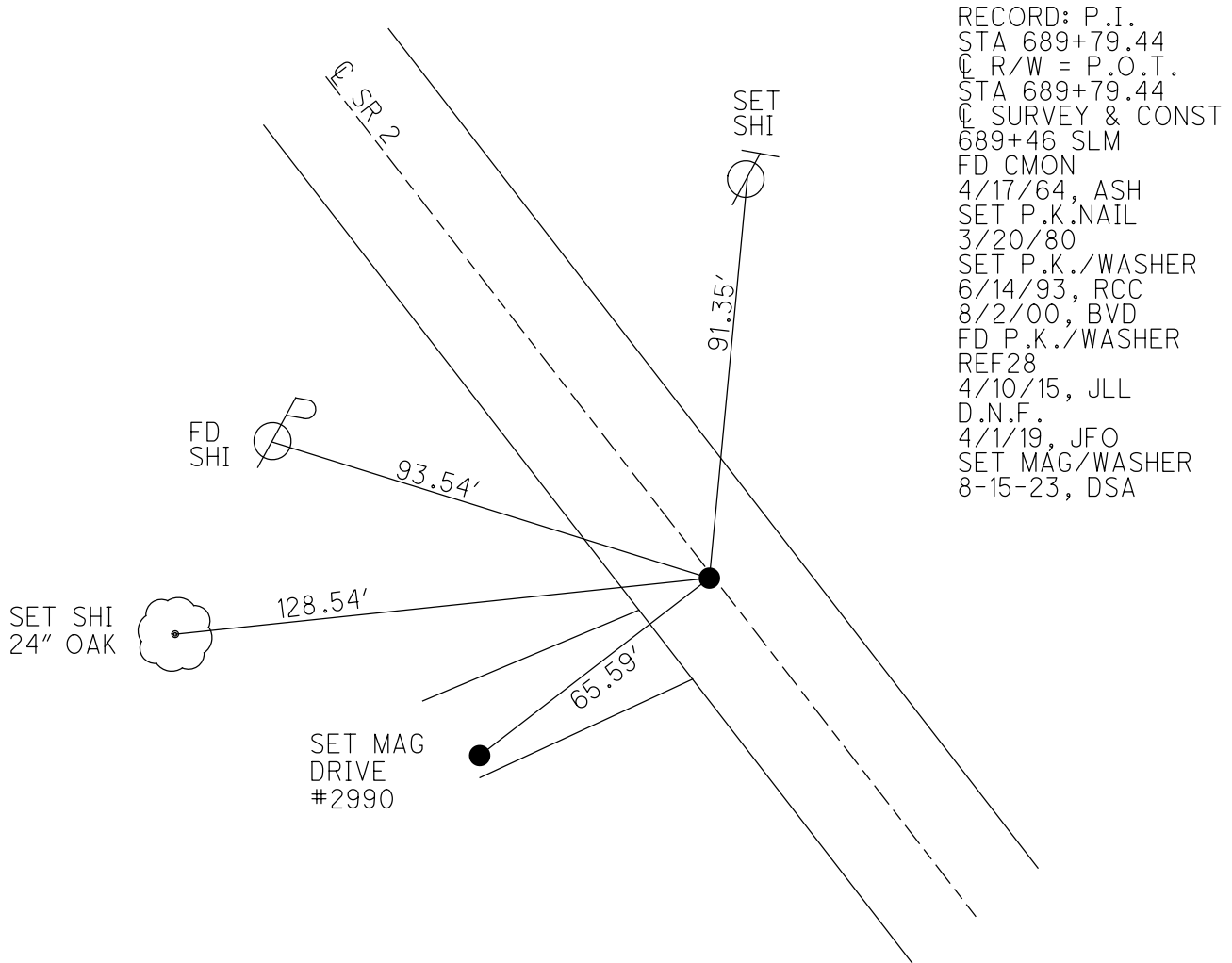
O.D.O.T. DISTRICT 2 SURVEY OFFICE (USE ONLY)

PERSONNEL _____ REFERENCE NO. 30 J SHEET 11 OF 25
 NOTES RHOADES DATE 8-15-23 ROUTE SR 2
 H.C. AUBLE WEATHER CLOUDY COUNTY OTTAWA
 R.C. NIESE TEMP. 72°F TOWNSHIP CARROLL
 DWG BY NIESE PID 95755 SECTION 24
 T 7 N R 15 E

TYPE MONUMENT MAG/WASHER
 ON SURFACE - ~~BELOW~~ ON
 OFFSET 0 PAVEMENT ON LT : RT
12.0' TO RT EDGE PAVEMENT
 STATION: 685+27.94



HORZ.DATUM: NAD83(2011) GEOID: 2012A
 GRID: NORTHING: 689850.590 EASTING: 1811655.212



O.D.O.T. DISTRICT 2 SURVEY OFFICE (USE ONLY)

PERSONNEL

REFERENCE NO. 30 J

SHEET 11 OF 25

NOTES VAN DUSEN

DATE 6/1/00

ROUTE SR 2

H.C. CORDES

WEATHER CLOUDY

COUNTY OTTAWA

R.C. BROWN

TEMP. 70°F

TOWNSHIP CARROLL

DWG BY NIESE

PID 107060

SECTION 24

T 7 N R 15 E

TYPE MONUMENT P.K./WASHER

ON SURFACE - ~~BELOW~~ ON

OFFSET ☉ PAVEMENT ON LT : RT

12.0' TO RT EDGE PAVEMENT

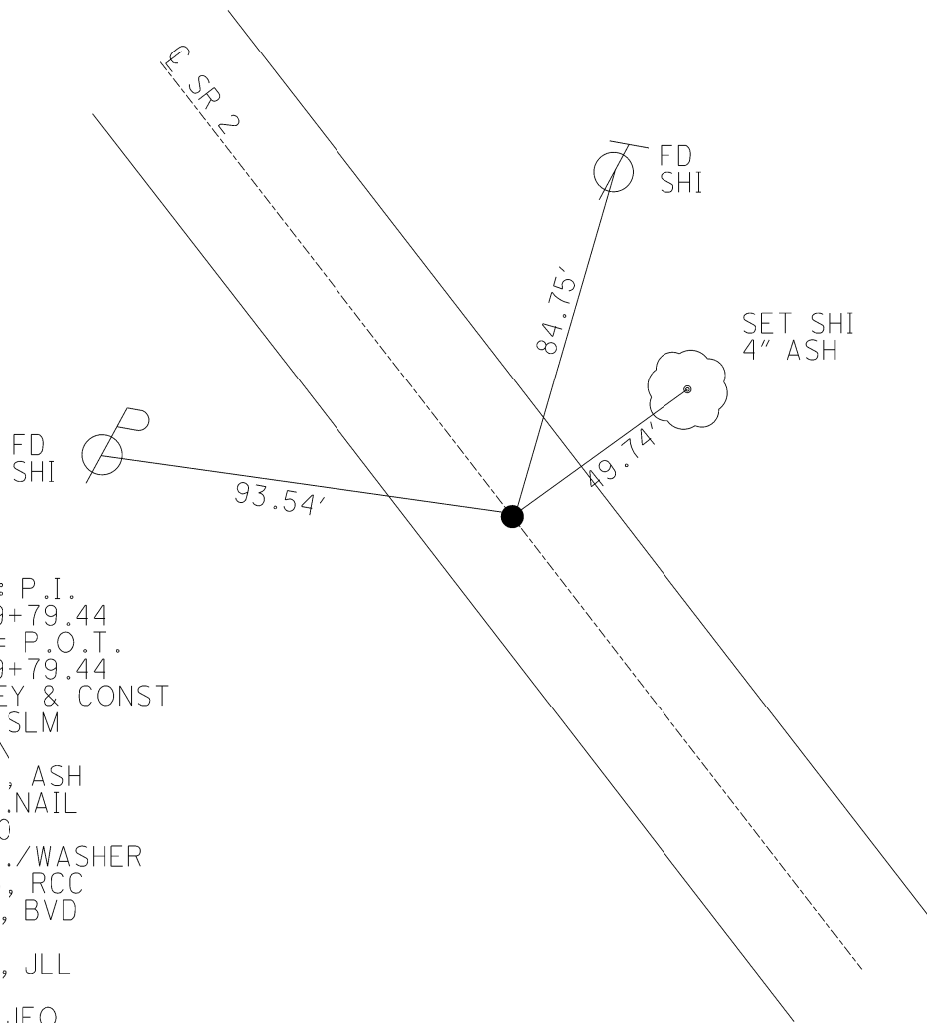
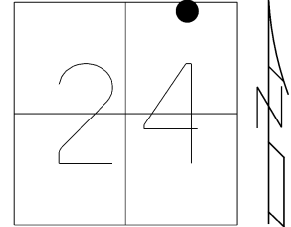
STATION: 685+27.94

HORZ. DATUM: NAD83(2011)

GEOID: 2012A

GRID: NORTHING: 689850.590

EASTING: 1811655.212



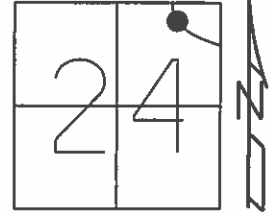
RECORD: P.I.
 STA 689+79.44
 ☉ R/W = P.O.T.
 STA 689+79.44
 ☉ SURVEY & CONST
 689+46 SLM
 FD CMON
 4/17/64, ASH
 SET P.K.NAIL
 3/20/80
 SET P.K./WASHER
 6/14/93, RCC
 8/2/00, BVD
 REF28
 4/10/15, JLL
 D.N.F.
 4/1/19, JFO

O.D.O.T. DISTRICT 2 SURVEY OFFICE (USE ONLY)

PERSONNEL _____ REFERENCE NO. 28 SHEET 5 OF 15

NOTES VAN DUSEN DATE 6-1-00 ROUTE SR 2
 H.C. CORDES WEATHER CLOUDY COUNTY OTTAWA
 R.C. BROWN TEMP. 70°F TOWNSHIP CARROLL
 _____ SECTION 24
 _____ T 7 N R 15 E

TYPE MONUMENT PK/WASHER
 ON SURFACE - ~~BELOW~~ _____ ON _____
 LEFT - ☉ PAV'T - RIGHT _____ ON _____
12' TO RT EDGE PAVEMENT
 S.L.M. 689+79.44

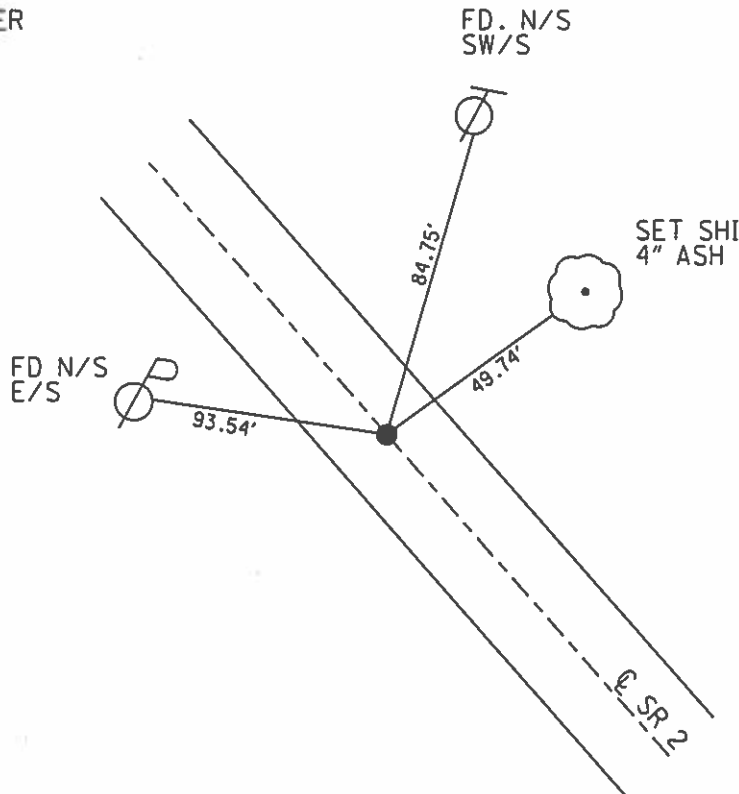


Grid: Northing: 689850.5904 Easting: 1811655.2120

RECORD
 P.I. STA. 689+79.44 @ RW=P.O.T.
 STA. 689+79.44 @ SURVEY & CONST & R/W
 CONC. MON W/ 0.5" IRON ROD -SET PK NAIL
 689+46 S.L.M
 3-20-80

SET PK/WASHER
 8-2-00, BVD

GPS, REF28
 4-10-15, JLL



O.D.O.T. DISTRICT 2 SURVEY OFFICE

PERSONNEL

REFERENCE NO. 28

SHEET 5 OF 15

NOTES VAN DUSEN

H.C. CORDES

R.C. BROWN

DATE 6-1-00

WEATHER Cloudy

TEMP. +70°F

ROUTE 2

COUNTY OTTAWA

TOWNSHIP Carroll

SECTION 24

T 7 N R 15 E

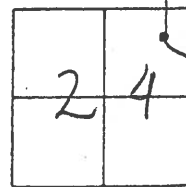
TYPE MONUMENT PK / WASHER

ON SURFACE - BELOW ON

LEFT & PAV'T. - RIGHT ON

12' TO RT EDGE PAVEMENT

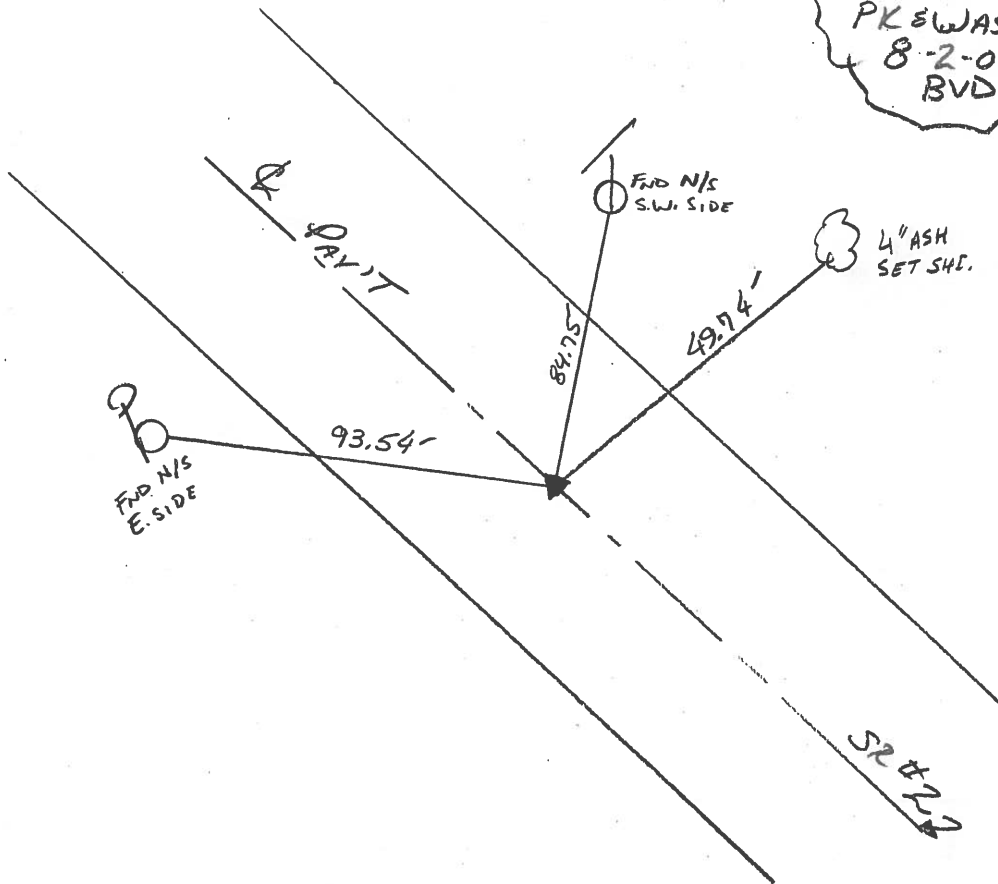
S.L.M. 689+71



RECORD: 3-20-80

P.I. STA 689+79.44 & RW = P.O.T. STA 689+79.44 & SURVEY & CONST
 CONC. MON W/ 1/2" IRON ROD - SET PK NAIL
689+46 S.L.M.

RESET
 PK & WASHER
 8-2-00
 BVD



O.D.O.T. DISTRICT 2 SURVEY OFFICE

PERSONNEL

REFERENCE NO. 28

SHEET 4 OF 13

NOTES CHELEY

H.C. RIPPLE

R.C. BARBOUR

GEYMAN

DATE 4-20-1993

WEATHER SUNNY

TEMP. 65°

ROUTE #2

COUNTY OTTAWA

TOWNSHIP CARROLL

SECTION 24

T 7 N R 15 E

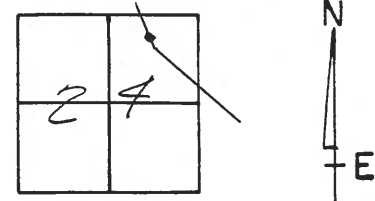
TYPE MONUMENT P.K./WASHER

ON SURFACE - ~~BELOW~~ ON

~~LEFT - & PAV'T. - RIGHT~~ ON

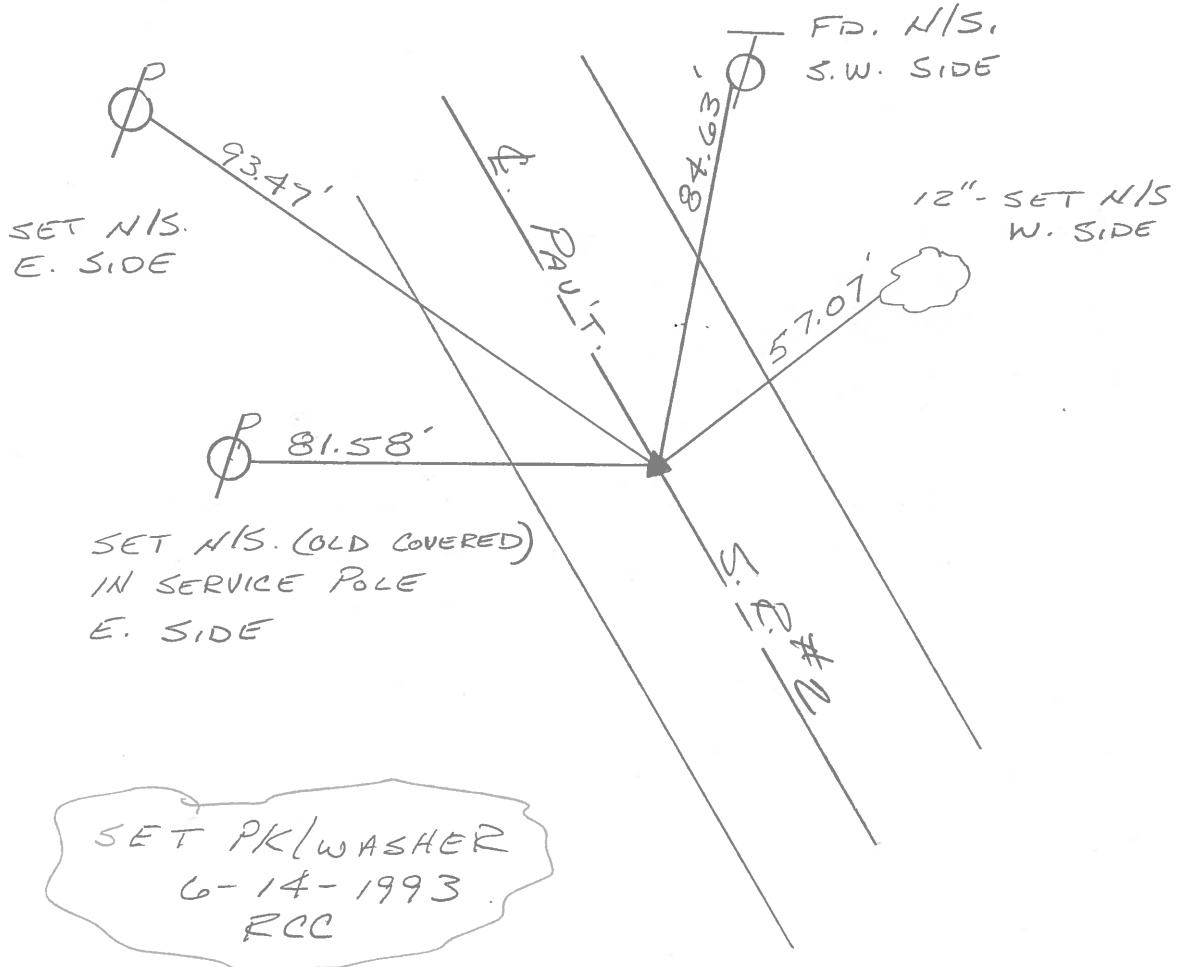
12' TO RT. EDGE PAVEMENT

S.L.M. 689+71



RECORDED: 3-20-80

P.I. STA. 689+79.44 & R/W. = P.O.T. STA. 689+79.44 & SURVEY &
 CONST. - CONC. MON W/ 1/2" IRON ROD - SET P.K. NAIL
 689+46 S.L.M.



SET N/S. (OLD COVERED)
 IN SERVICE POLE
 E. SIDE

SET PK/WASHER
 6-14-1993
 RCC

Q.D.O.T. DISTRICT 2 SURVEY OFFICE

Sht. of

County Ottawa S.R. # 2

Date 3-20-80

Township Carroll

Weather Fair

Section 24

Temp. 40°

T 7 N, R 5 E

Personnel Schneider

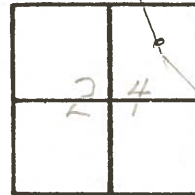
Mosser

Barbour

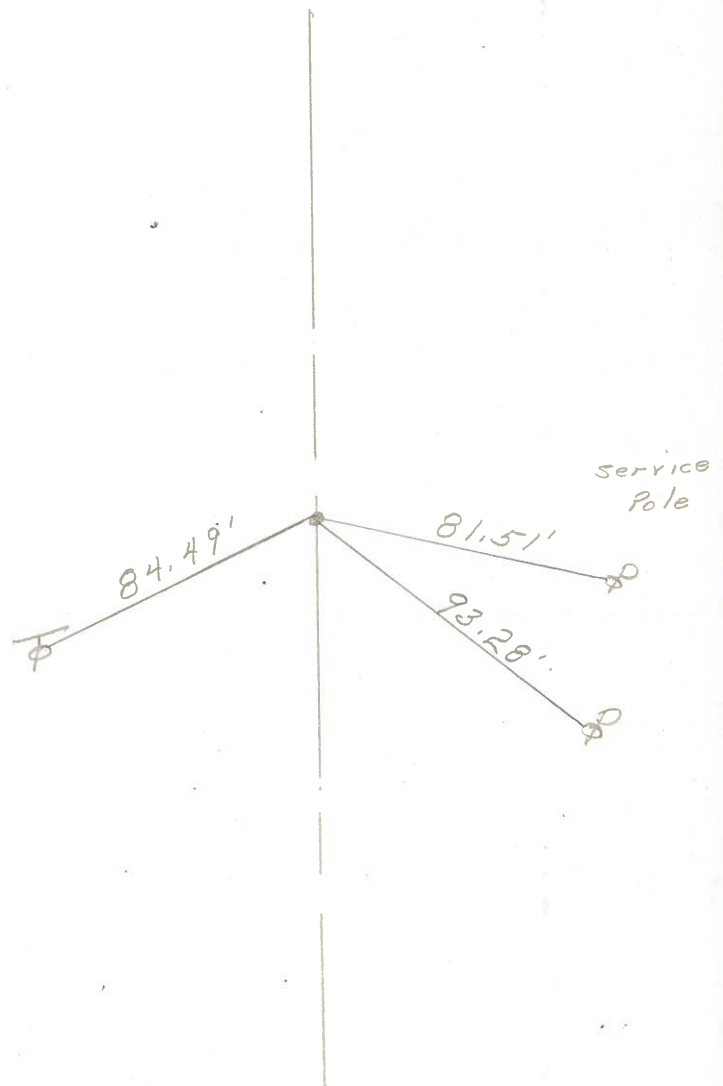
Ripple

Geyman

28



⊕ S.R. # 2



P.I.

689+79.44 ⊕ R/W =

P.O.T.

689+79.44 ⊕ survey
and const.

Conc. Man, with 1/2" iron Rod
in it.

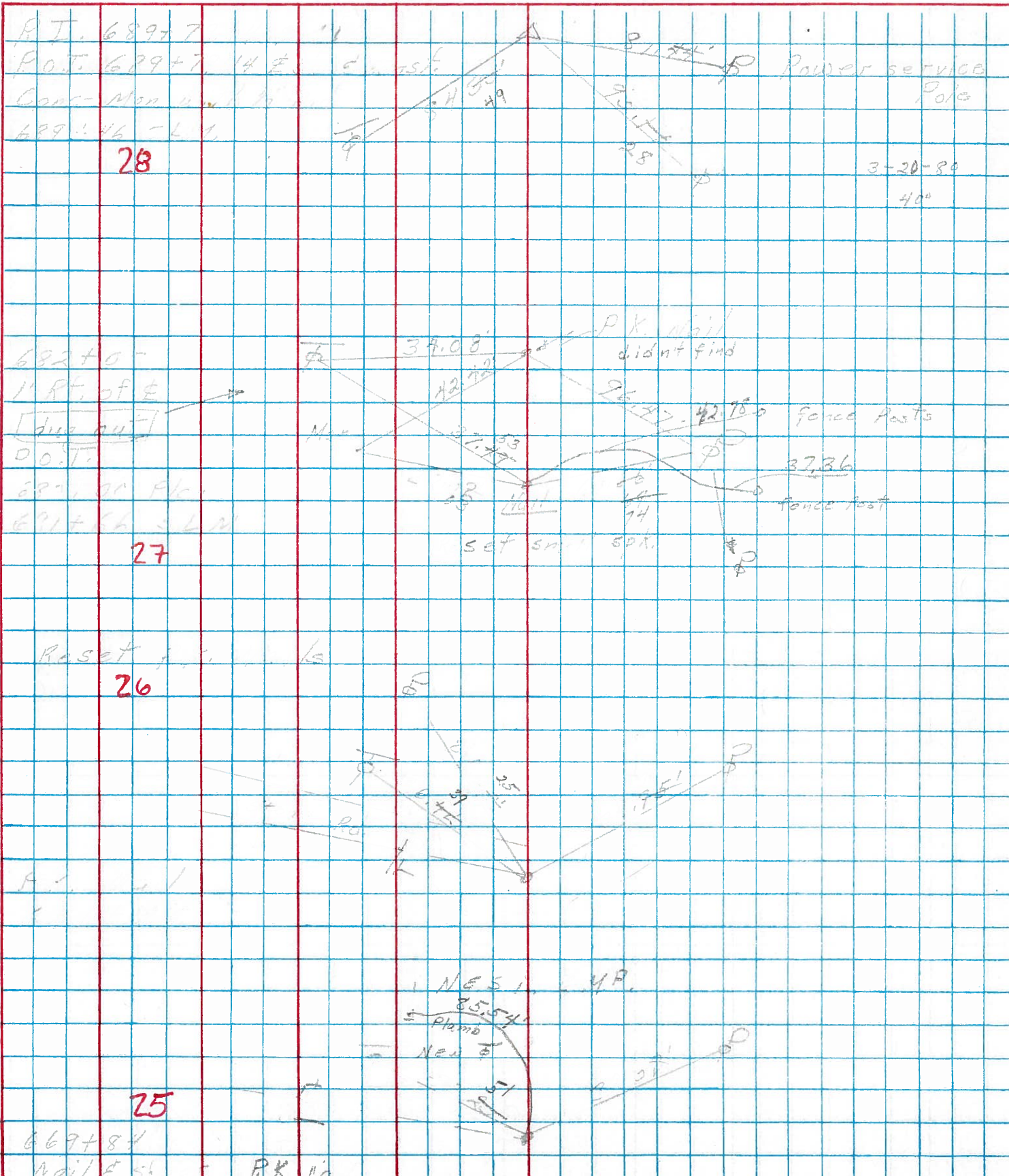
689+46 SLM

Reset P.K. Nail

9-5-80

PERSONNEL	TITLE	PERSONNEL	TITLE	COUNTY	DATE
Schneider		C		Ottawa	
Mosser		A		S. R. 2	WEATHER
Barbour				SEC. 2	TEMP.

DESCRIPTION _____ LEFT _____ CENTER LINE _____ RIGHT _____ JOB NO. _____



PERSONNEL TITLE PERSONNEL TITLE

2-H-39

COUNTY Ottawa DATE Apr. 17, '64

Leemaster
Geyman

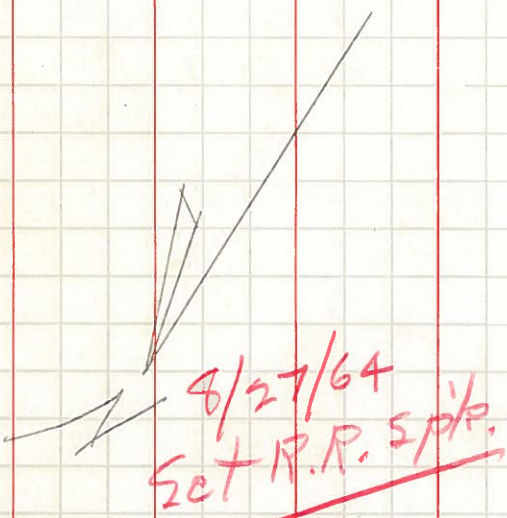
S. R. #2 - Rusha Creek WEATHER Clear (Windy)

SEC. Ott. 2-13.07 (Br.) TEMP. 70°
I-801763

DESCRIPTION Control Points & Ties JOB NO. 02451

(All Measurements Plum-Line)

P.I. 698+01.69 Sur. & Const.
Tacked Hub.



P.I. Spiral - O's. Sur. & Const.
Tacked Hub.

8/26/64
Set P.K. For
THOT. Point

P.I. 689+79.44 R/W =
P.O.T. 689+79.44 Sur. & Const.
P.K. Nail 689+46 SLM
Conc. Mon. 1/2 Rod

1" Cut in Conc.
Cor. Post.

