

O.D.O.T. DISTRICT 2 SURVEY OFFICE (USE ONLY)

PERSONNEL

REFERENCE NO. 30 K

SHEET 12 OF 25

NOTES RHOADES

DATE 9-28-20

ROUTE SR 2

H.C. O'DONNELL

WEATHER CLOUDY

COUNTY OTTAWA

R.C. AUBLE

TEMP. 70°

TOWNSHIP CARROLL

SECTION 24

DWG BY NIESE PID 95755

T 7 N R 15 E

TYPE MONUMENT P.K./WASHER

ON SURFACE - ~~BELOW~~ ON

OFFSET 0 PAVEMENT ON LT : RT

12.0' TO RT EDGE PAVEMENT

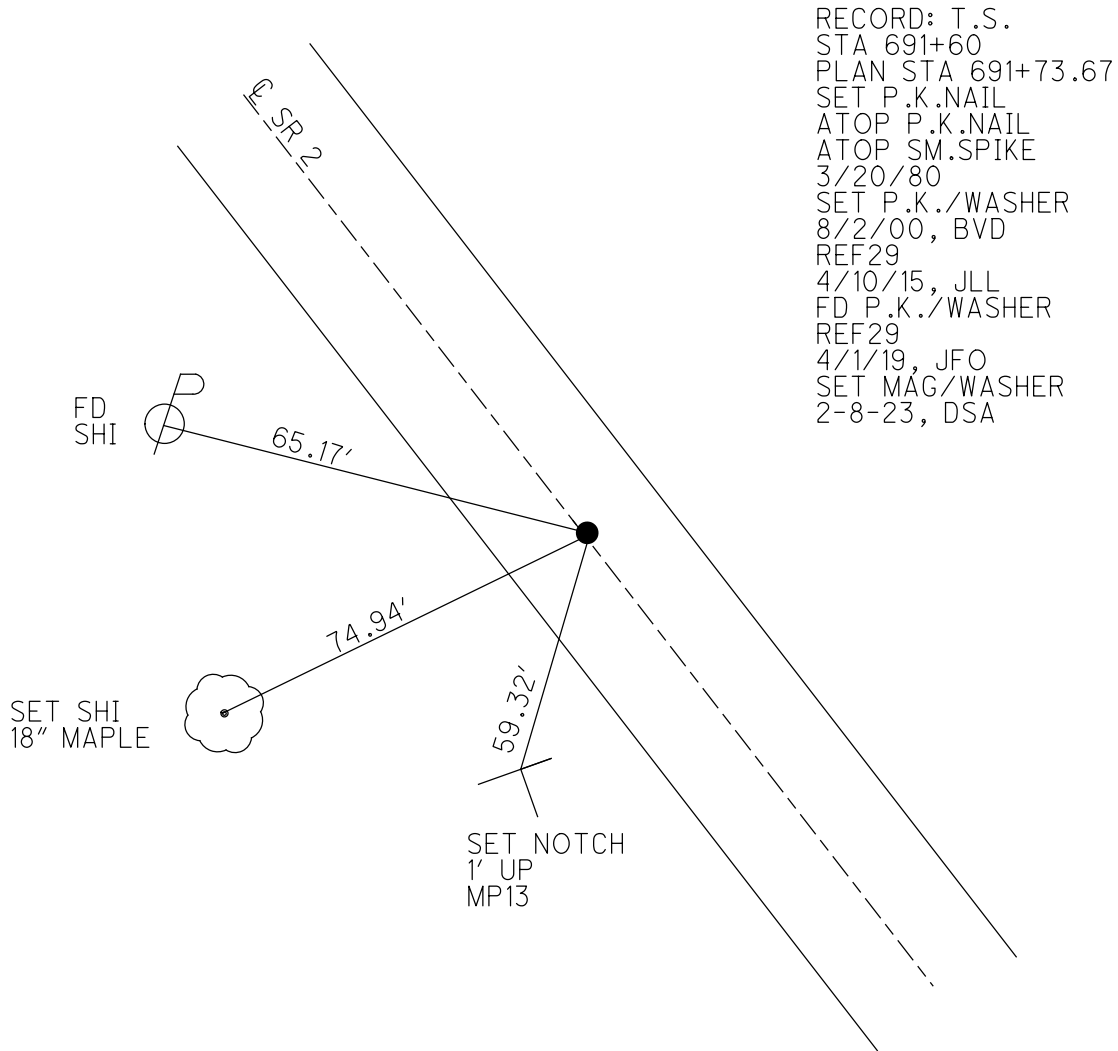
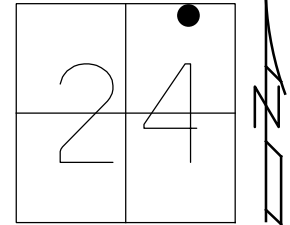
STATION: 687+21.70

HORZ.DATUM: NAD83(2011)

GEOID: 2012A

GRID: NORTHING: 689689.427

EASTING: 1811762.332



O.D.O.T. DISTRICT 2 SURVEY OFFICE (USE ONLY)

PERSONNEL

REFERENCE NO. 30 K

SHEET 12 OF 25

NOTES VAN DUSEN

DATE 6/1/00

ROUTE SR 2

H.C. CORDES

WEATHER CLOUDY

COUNTY OTTAWA

R.C. BROWN

TEMP. 70°

TOWNSHIP CARROLL

SECTION 24

DWG BY NIESE PID 107060

T 7 N R 15 E

TYPE MONUMENT P.K./WASHER

ON SURFACE - ~~BELOW~~ ON

OFFSET \varnothing PAVEMENT ON LT : RT

12.0' TO RT EDGE PAVEMENT

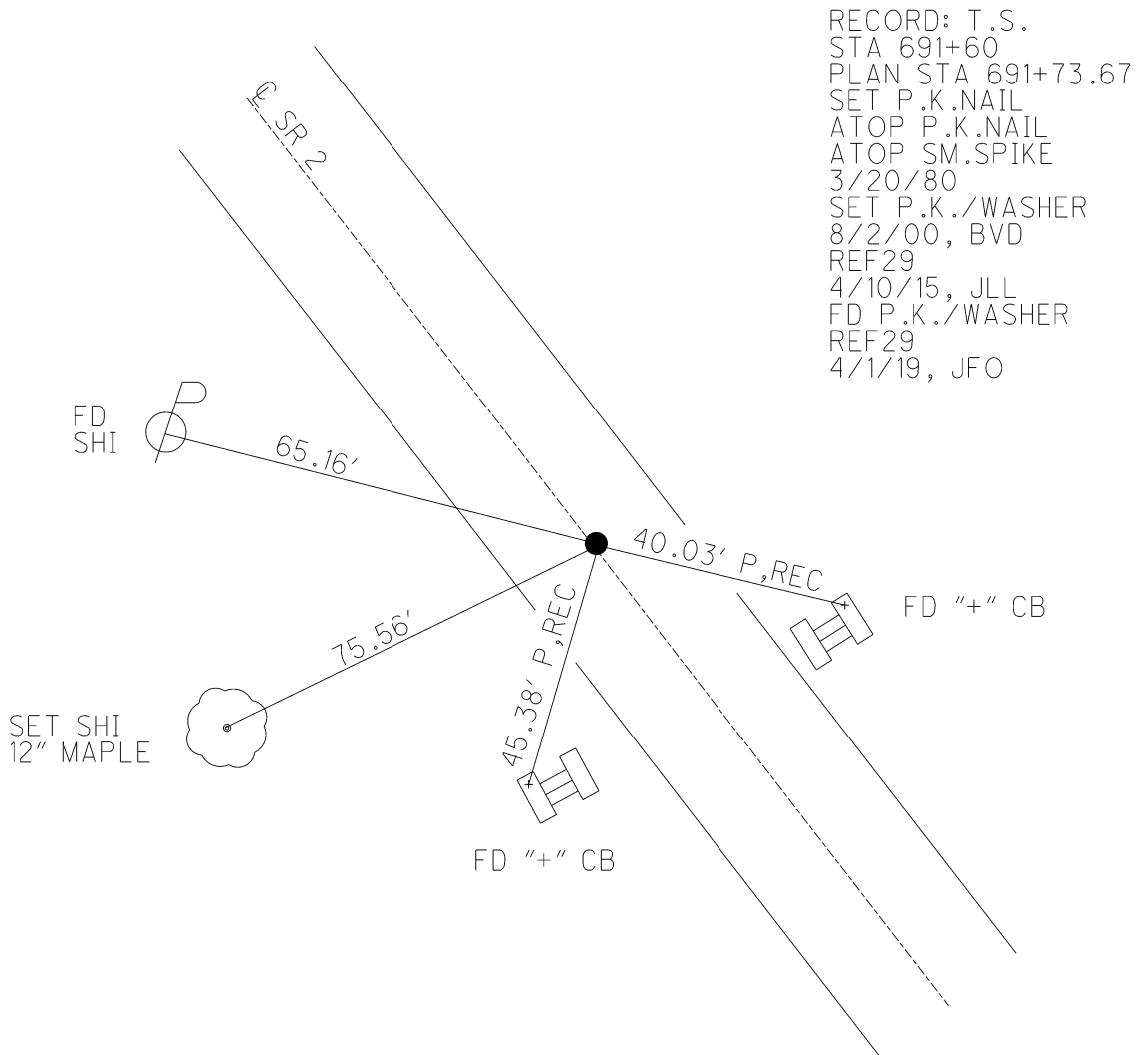
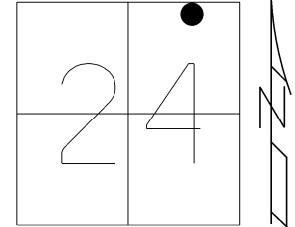
STATION: 687+21.70

HORZ.DATUM: NAD83(2011)

GEOID: 2012A

GRID: NORTHING: 689689.427

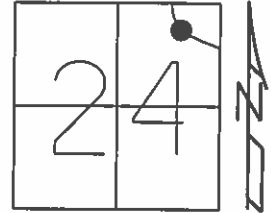
EASTING: 1811762.332



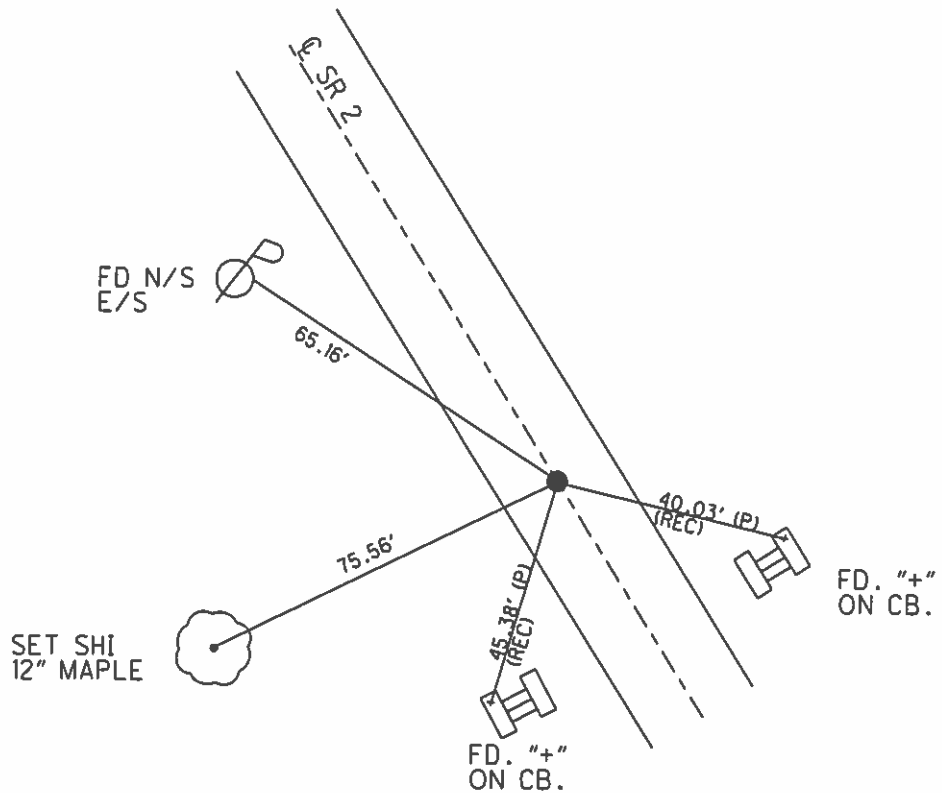
O.D.O.T. DISTRICT 2 SURVEY OFFICE (USE ONLY)

PERSONNEL _____ REFERENCE NO. 29 SHEET 6 OF 15
 NOTES VAN DUSEN DATE 6-1-00 ROUTE SR 2
 H.C. CORDES WEATHER CLOUDY COUNTY OTTAWA
 R.C. BROWN TEMP. 70°F TOWNSHIP CARROLL
 SECTION 24
 T 7 N R 15 E

TYPE MONUMENT PK/WASHER
 ON SURFACE - ~~BELOW~~ ON
 LEFT - ☉ PAV'T - RIGHT ON
12' TO RT EDGE PAVEMENT
 S.L.M. 691+73.67
 Grid: Northing: 689689.4269 Easting: 1811762.3320



RECORD
 SLM. STA. 691+60
 T.S.
 PLAN STA. 691+73.67
 SET PK. NAIL
 ATOP PK. NAIL
 ATOP SMALL SPK
 3-20-1980
 SET PK/WASHER
 8-2-00, BVD
 GPS, REF29
 4-10-15, JLL



O.D.O.T. DISTRICT 2 SURVEY OFFICE

PERSONNEL

REFERENCE NO. 29

SHEET 6 OF 15

NOTES VANDUSEN

H.C. CORDES

R.C. BROWN

DATE 6-1-00

WEATHER Cloudy

TEMP. +70°F

ROUTE 2

COUNTY OTTAWA

TOWNSHIP CARROLL

SECTION 24

T. 7 NR. 15 E

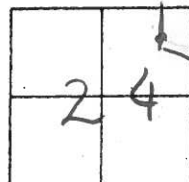
TYPE MONUMENT PK/WASHER

ON SURFACE - ~~BELOW~~ ON

LEFT - & PAV'T. - RIGHT ON

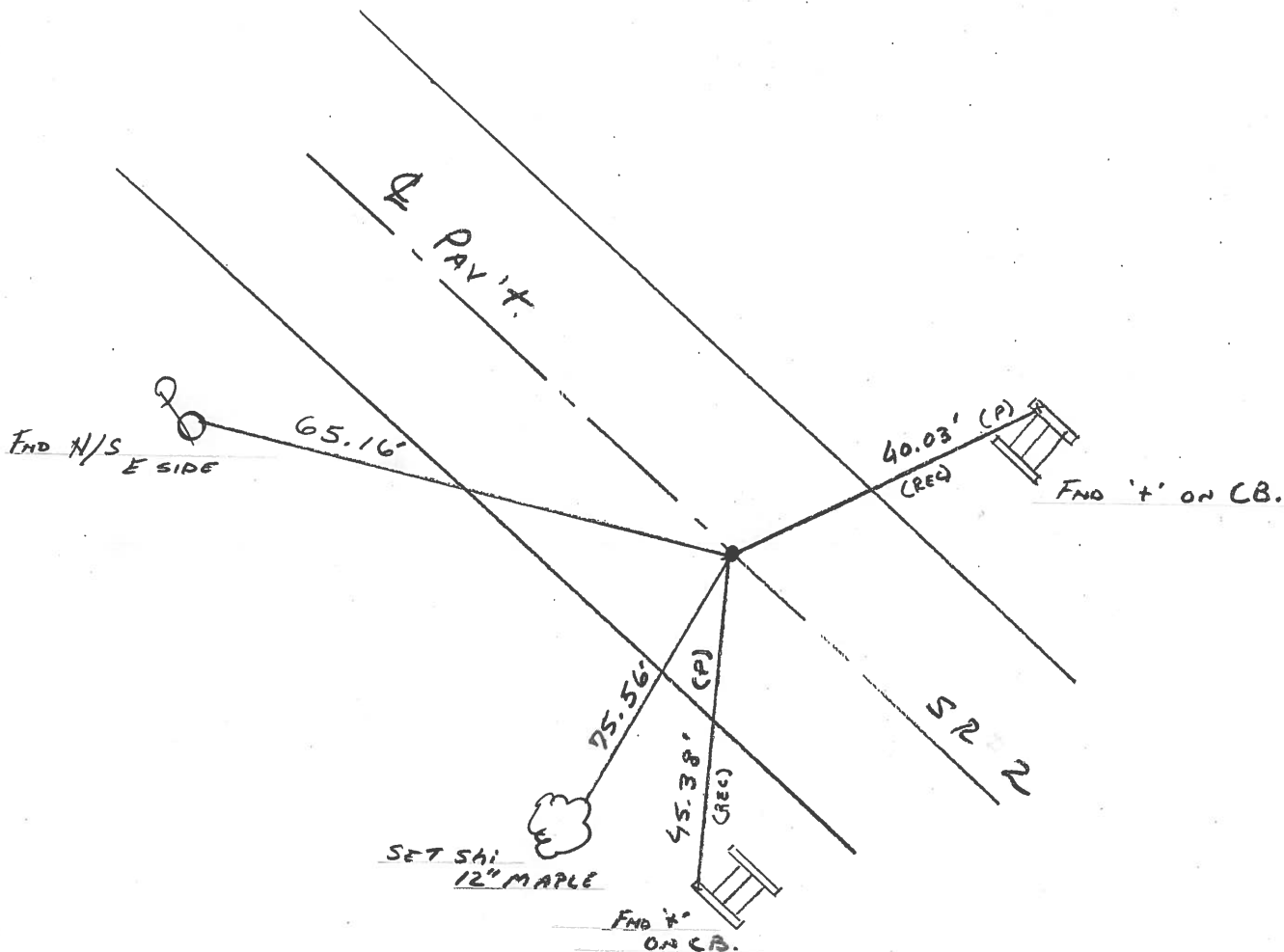
12' TO R + EDGE PAVEMENT

S.L.M. 691+66



RECORD: 3-20-1980
 SLM. STA. 691+60
 T.S.
 PLAN STA. 691+73.67
 SET PK NAIL ATOP
 PK NAIL ATOP
 SMALL SPK

RESET PK/WASHER
 8-2-00
 BVD



O.D.O.T. DISTRICT 2 SURVEY OFFICE

PERSONNEL

REFERENCE NO. 29

SHEET 5 OF 13

NOTES CHENEY

H.C. RIPPLE

R.C. BARBOUR

GEYMAH

DATE 4-20-1993

WEATHER SUNNY

TEMP. 65°

ROUTE #2

COUNTY OTTAWA

TOWNSHIP CARROLL

SECTION 24

T.7 N R.15 E

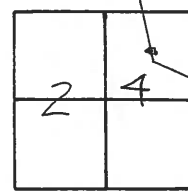
TYPE MONUMENT PK/WASHER

ON SURFACE - ~~BELOW~~ ON

~~LEFT - & PAV'T. - RIGHT~~ ON

12' TO RT EDGE PAVEMENT

S.L.M. 691+66



RECORD: 3-20-1980

S.L.M. STA. 691+60

T.S.

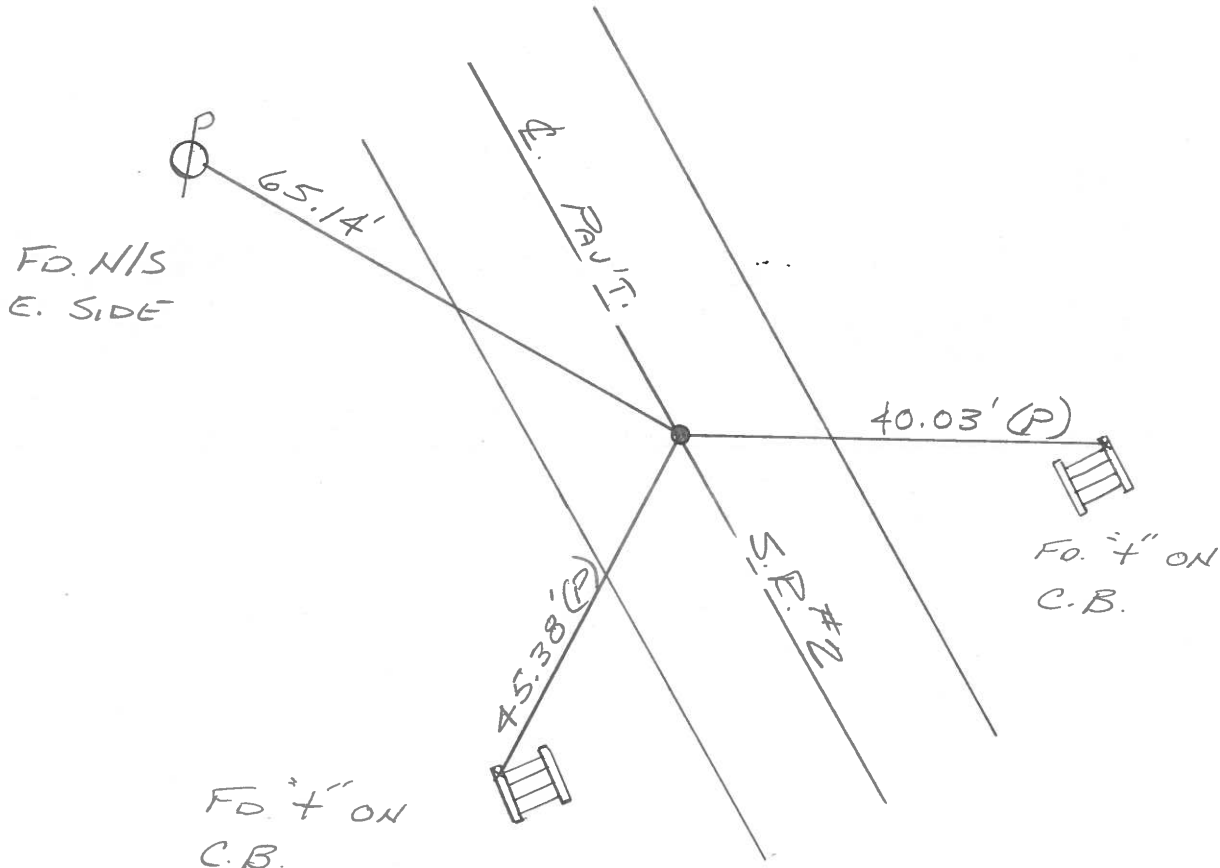
PLAN STA. 691+73.67

SET P.K. NAIL ATOP

P.K. NAIL ATOP

SMALL SBK.

SET PK/WASHER
 6-14-1993
 RCC



Q.D.O.T. DISTRICT 2 SURVEY OFFICE

Sht. of

County Ottawa S.R. # 2

Date 3-20-80

Township Carroll

Weather Fair

Section 24

Temp. 40°

T 7 N, R 15 E

Personnel Schneider

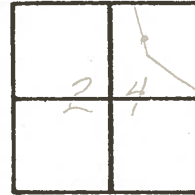
Mosser

Barbour

Ripple

Geyman

29

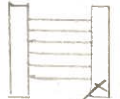


"X" on C.B.



40.00'
Plumbed

"X" on C.B.



45.40'
Plumbed

65.15"

T. S.

691+73.67 Plan

Small spk.

691+60 SLM

P. K. on top

Reset P. K. Nail

9-5-80

⊕ S.R. # 2

⊕

⊕

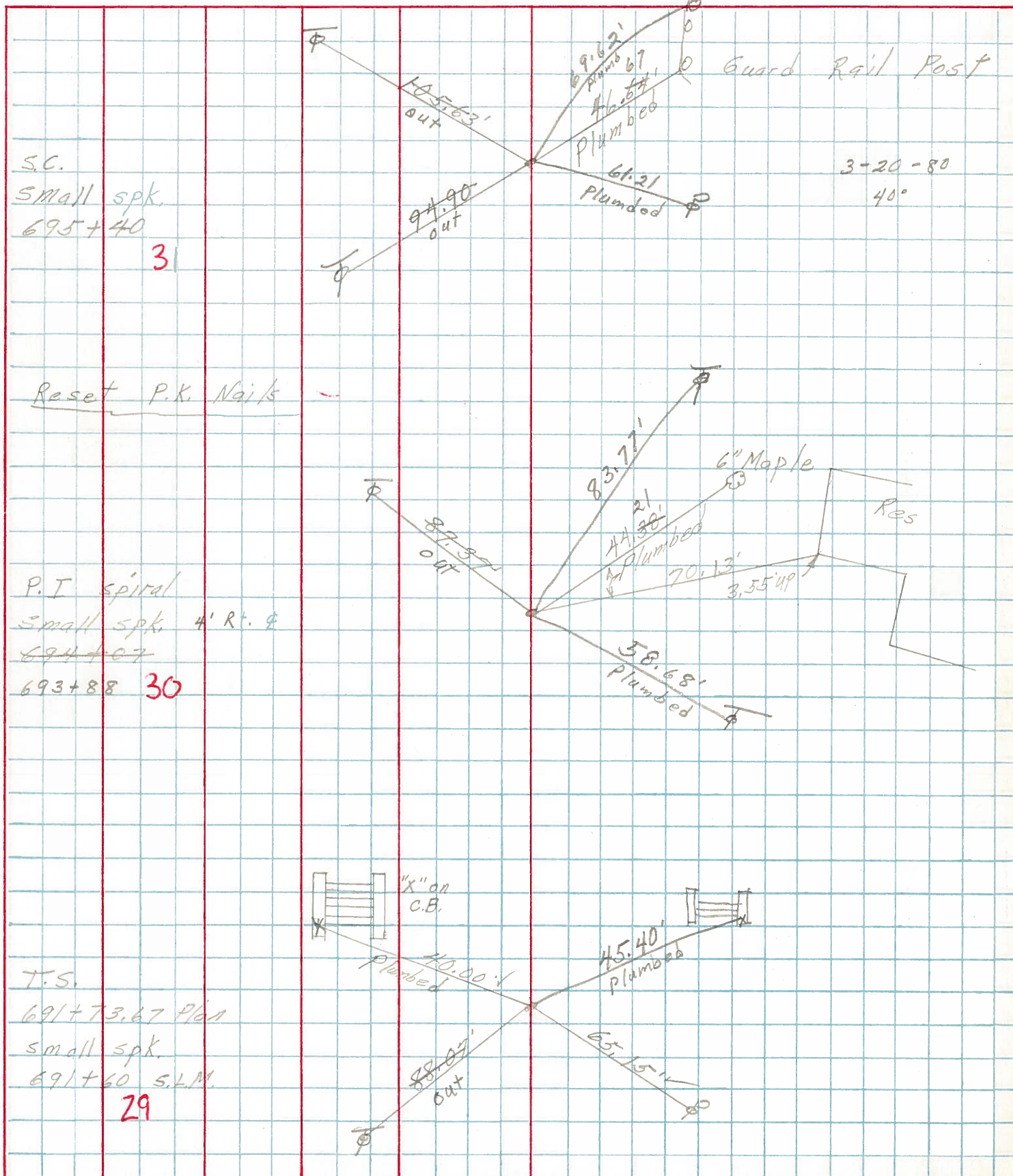
PERSONNEL TITLE PERSONNEL TITLE

COUNTY Ottawa DATE 7-29-74

S. R. 2 WEATHER Sunny

SEC. 04-2.1307 Br. TEMP. 80°

DESCRIPTION Carroll Twp. JOB NO.



S.C.
Small spk.
695+40
31

Reset P.K. Nails

P.I. spiral
Small spk. 4' R. &
694+07
693+88 **30**

T.S.
691+73.67 Plon
small spk.
691+60 S.L.M.
29

3-20-80
40°

Guard Rail Post

Res

4" or
C.B.

40.00' Plumbed

45.40' Plumbed

88.09' out

65.15' out

105.63' out

94.90' out

9.62' Plumbed

46.67' Plumbed

61.21' Plumbed

83.71'

44.38' Plumbed

70.13'

3.55' up

58.68' Plumbed