

O.D.O.T. DISTRICT 2 SURVEY OFFICE (USE ONLY)

PERSONNEL

REFERENCE NO. 31

SHEET 14 OF 25

NOTES ASTON

DATE 5-11-23

ROUTE SR 2

H.C. AUBLE

WEATHER SUNNY

COUNTY OTTAWA

R.C. NIESE

TEMP. 76°

TOWNSHIP CARROLL

SECTION 24

DWG BY NIESE

PID 95755

T 7 N R 15 E

TYPE MONUMENT MAG/WASHER

ON SURFACE - ~~BELOW~~ ON

OFFSET CL PAVEMENT ON LT : RT

12.0' TO RT EDGE PAVEMENT

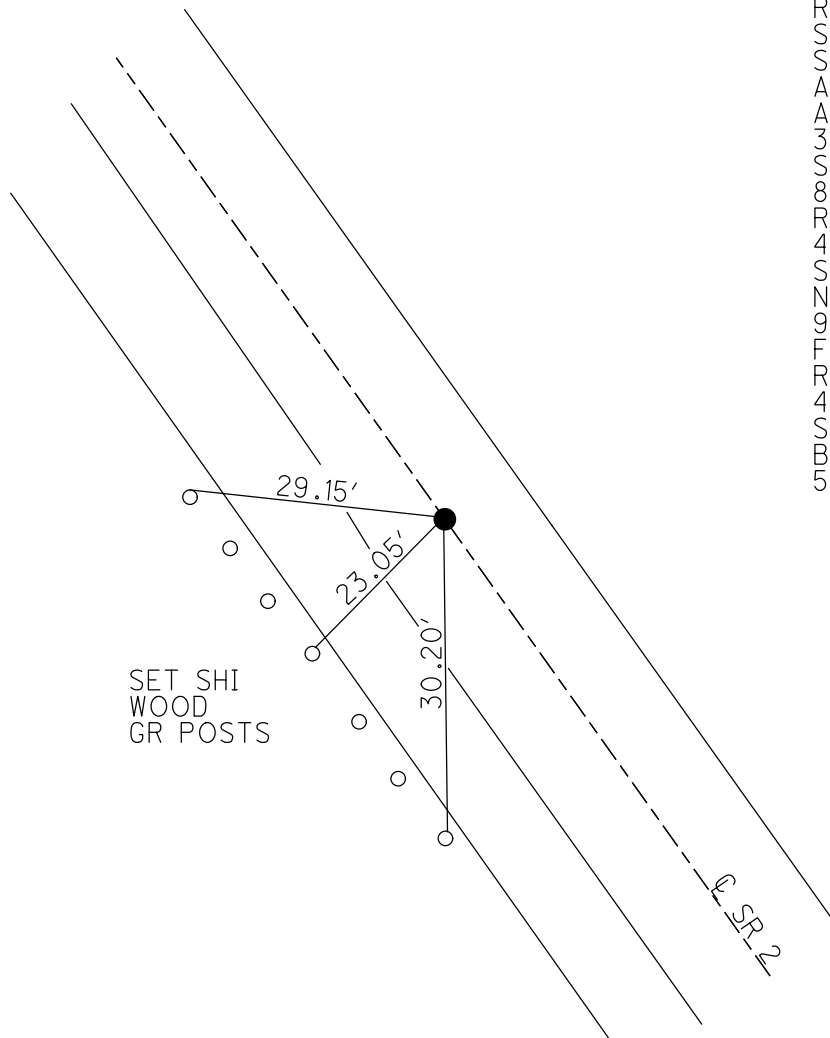
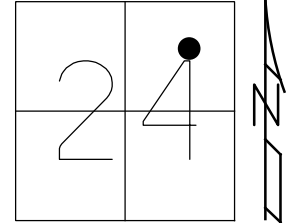
STATION: 691+21.70

HORZ.DATUM: NAD83(2011)

GEOID: 2012A

GRID: NORTHING: 689363.001

EASTING: 1811993.529



RECORD: S.C.  
 STA 695+40  
 SET P.K.NAIL  
 ATOP P.K.NAIL  
 ATOP SM.SPIKE  
 3/20/80  
 SET P.K./WASHER  
 8/2/00, BVD  
 REF31  
 4/10/15, JLL  
 SET MAG/WASHER  
 NEWREF31  
 9/8/16, JFO  
 FD MAG/WASHER  
 REF31  
 4/1/19, JFO  
 SET MAG/WASHER  
 BY COORDINATES  
 5-11-23, DSA

O.D.O.T. DISTRICT 2 SURVEY OFFICE (USE ONLY)

PERSONNEL

REFERENCE NO. 31

SHEET 14 OF 25

NOTES RHOADES  
H.C. O'DONNELL  
R.C. TODD

DATE 9/14/16  
WEATHER CLOUDY  
TEMP. 68°

ROUTE SR 2  
COUNTY OTTAWA  
TOWNSHIP CARROLL  
SECTION 24  
T 7 N R 15 E

DWG BY NIESE PID 107060

TYPE MONUMENT P.K./WASHER

ON SURFACE - ~~BELOW~~ ON

OFFSET Q PAVEMENT ON LT : RT

12.0' TO RT EDGE PAVEMENT

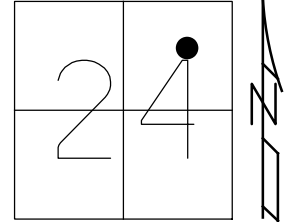
STATION: 691+21.70

HORZ.DATUM: NAD83(2011)

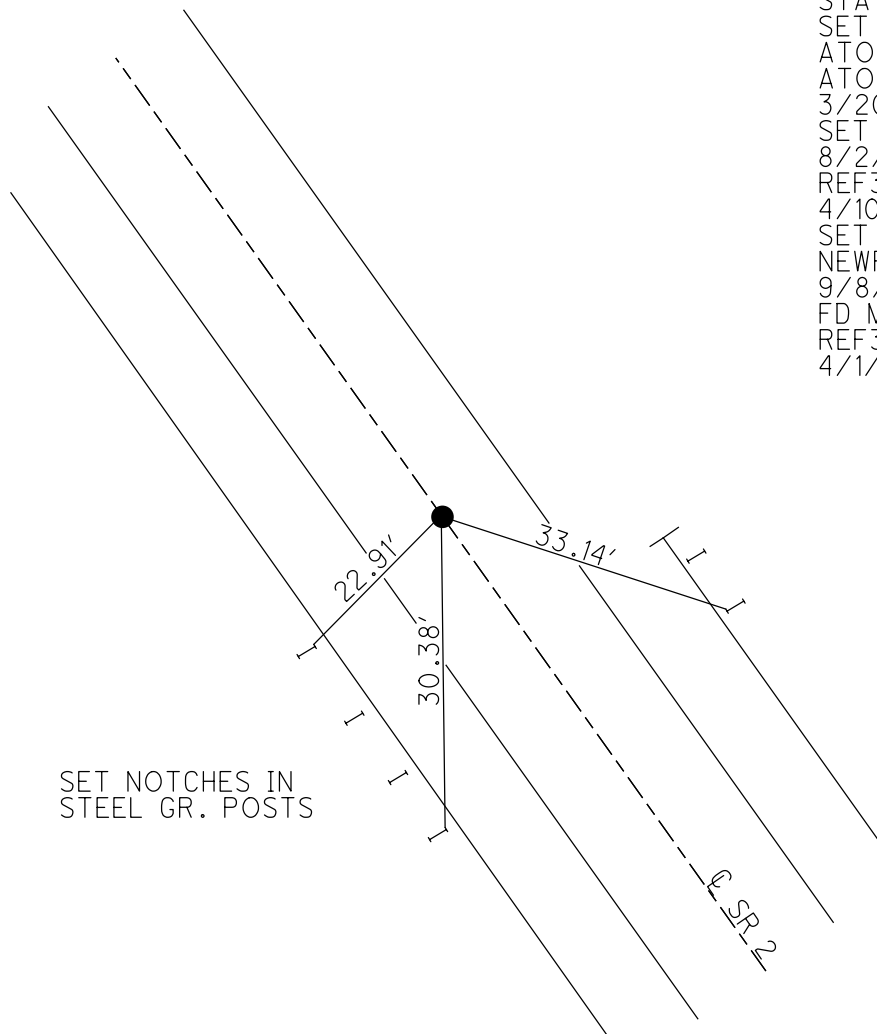
GEOID: 2012A

GRID: NORTHING: 689363.001

EASTING: 1811993.529



RECORD: S.C.  
STA 695+40  
SET P.K.NAIL  
ATOP P.K.NAIL  
ATOP SM.SPIKE  
3/20/80  
SET P.K./WASHER  
8/2/00, BVD  
REF31  
4/10/15, JLL  
SET MAG/WASHER  
NEWREF31  
9/8/16, JFO  
FD MAG/WASHER  
REF31  
4/1/19, JFO

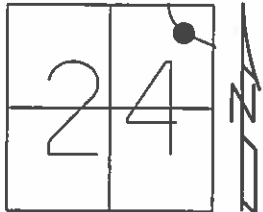


SET NOTCHES IN  
STEEL GR. POSTS

O.D.O.T. DISTRICT 2 SURVEY OFFICE (USE ONLY)

PERSONNEL \_\_\_\_\_ REFERENCE NO. 31 SHEET 8 OF 15  
NOTES RHOADES DATE 9/14/16 ROUTE SR 2  
H.C. O'DONNELL WEATHER CLOUDY COUNTY OTTAWA  
R.C. TODD TEMP. 68° TOWNSHIP CARROLL  
SECTION 24  
T 7 N R 15 E

TYPE MONUMENT P.K./WASHER  
ON SURFACE - ~~BELOW~~ ON  
LEFT - ☉ PAV'T - RIGHT ON  
12' TO RT EDGE PAVEMENT  
S.L.M. 695+73.67

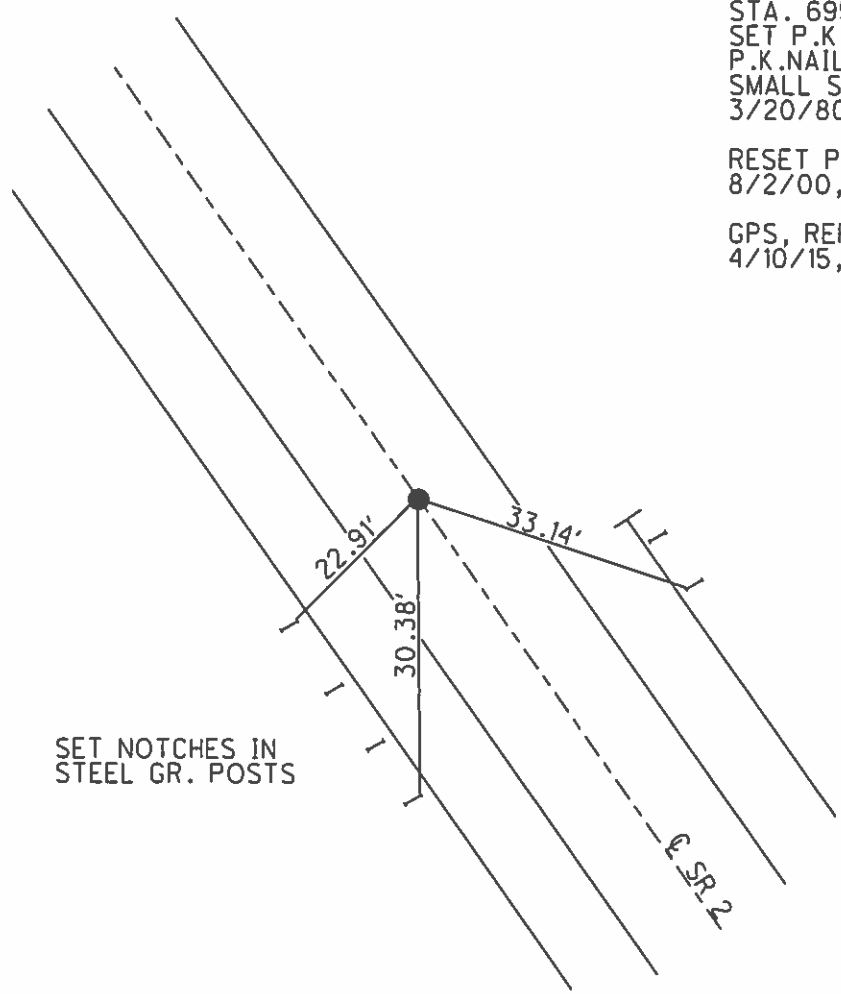


Grid: Northing: 689363.001 Easting: 1811993.529

RECORD: S.C.  
STA. 695+40  
SET P.K. NAIL ATOP  
P.K. NAIL ATOP  
SMALL SPIKE  
3/20/80

RESET P.K./WASHER  
8/2/00, BVD

GPS, REF31  
4/10/15, JLL



SET NOTCHES IN  
STEEL GR. POSTS

O.D.O.T. DISTRICT 2 SURVEY OFFICE

PERSONNEL

REFERENCE NO. 31

SHEET 8 OF 15

NOTES VAN DUSEN

H.C. CORDES

R.C. BROWN

DATE 6-1-2000

WEATHER cloudy

TEMP. +70°F

ROUTE 2

COUNTY OTT

TOWNSHIP \_\_\_\_\_

SECTION \_\_\_\_\_

T7 N R 15 E

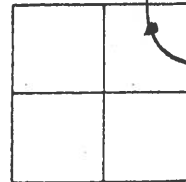
TYPE MONUMENT P.K. WASHER

ON SURFACE - ~~BELOW~~ ON

~~LEFT~~ - & PAV'T. - ~~RIGHT~~ ON

12' TORT EDGE PAVEMENT

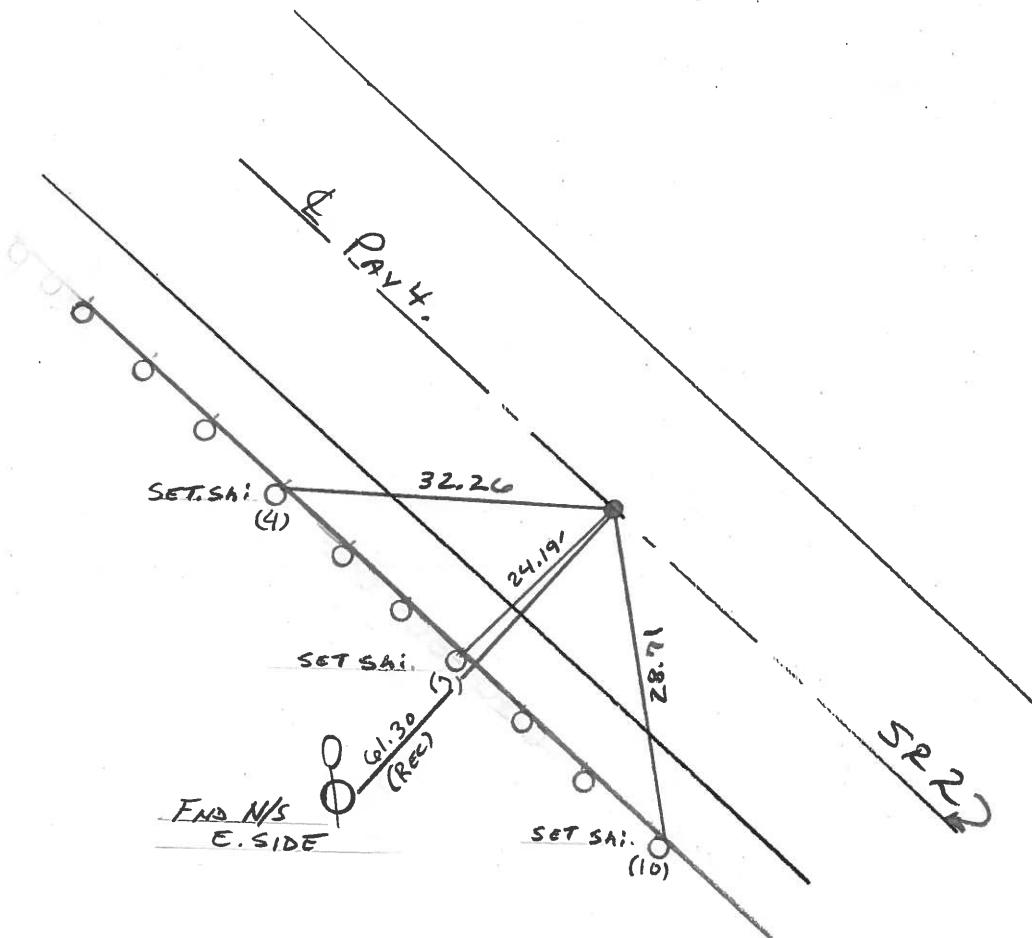
S.L.M. 695+66



RECORD: 3-20-1980

S. C.  
STA. 695+40  
SET P.K. NAIL ATOP  
P.K. NAIL ATOP  
SMALL SPK

RESET PK/WASHER  
8-2-00  
BYD



# O.D.O.T. DISTRICT 2 SURVEY OFFICE

PERSONNEL

REFERENCE NO. 31

SHEET 7 OF 13

NOTES CAHEY

H.C. RIPPLE

DATE 4-20-1993

ROUTE #2

R.C. BARBOUR

WEATHER SUNNY

COUNTY OTTAWA

GREYMAN

TEMP. 65°

TOWNSHIP CARROLL

SECTION 24

T 7 N R 15 E

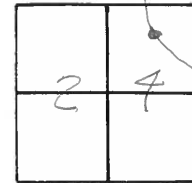
TYPE MONUMENT PK/WASHER

ON SURFACE - ~~BELOW~~ ON

LEFT - ~~PAV'T.~~ PAV'T. - RIGHT ON

12' TO RT. EDGE PAVEMENT

S.L.M. 695+66



RECORD: 3-20-1980

S.C.

STA. 695+40

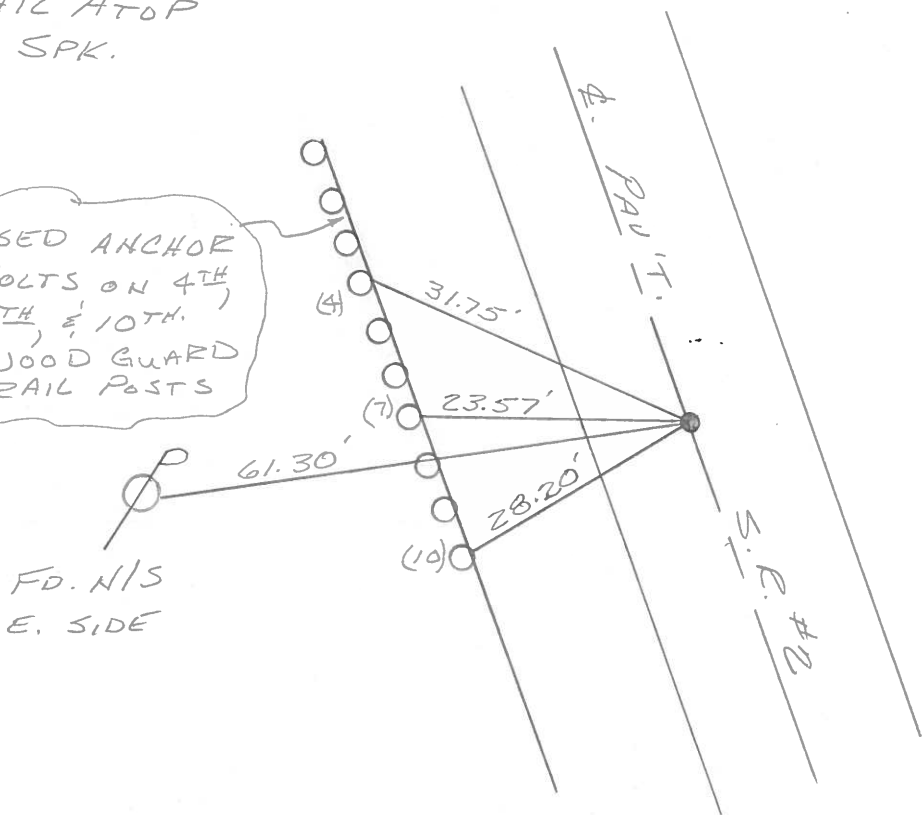
SET P.K. NAIL ATOP

P.K. NAIL ATOP

SMALL SPK.

SET PK/WASHER  
 6-14-1993  
 RCC

USED ANCHOR  
 BOLTS ON 4TH,  
 7TH, & 10TH.  
 WOOD GUARD  
 RAIL POSTS



OD.O.T. DISTRICT 2 SURVEY OFFICE

Sht. \_\_\_ of \_\_\_

County Ottawa S.R. # 2

Date 3-20-80

Township Carroll

Weather Fair

Section 24

Temp. 40°

T7N, R15E

Personnel Schneider

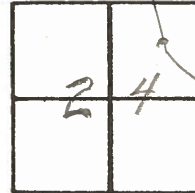
Mosser

Barbour

Ripple

Geyman

31



S.C.

small SPK.

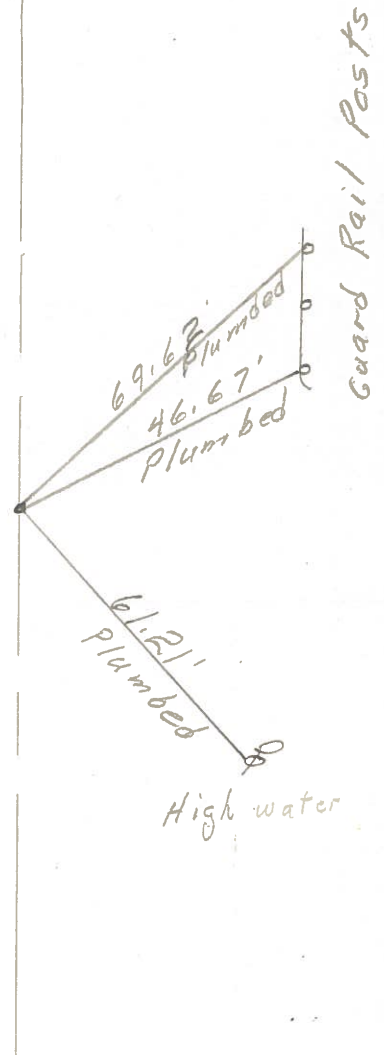
P.K. on top

695+40

Reset P.K. Nail

9-5-80

S.R. # 2



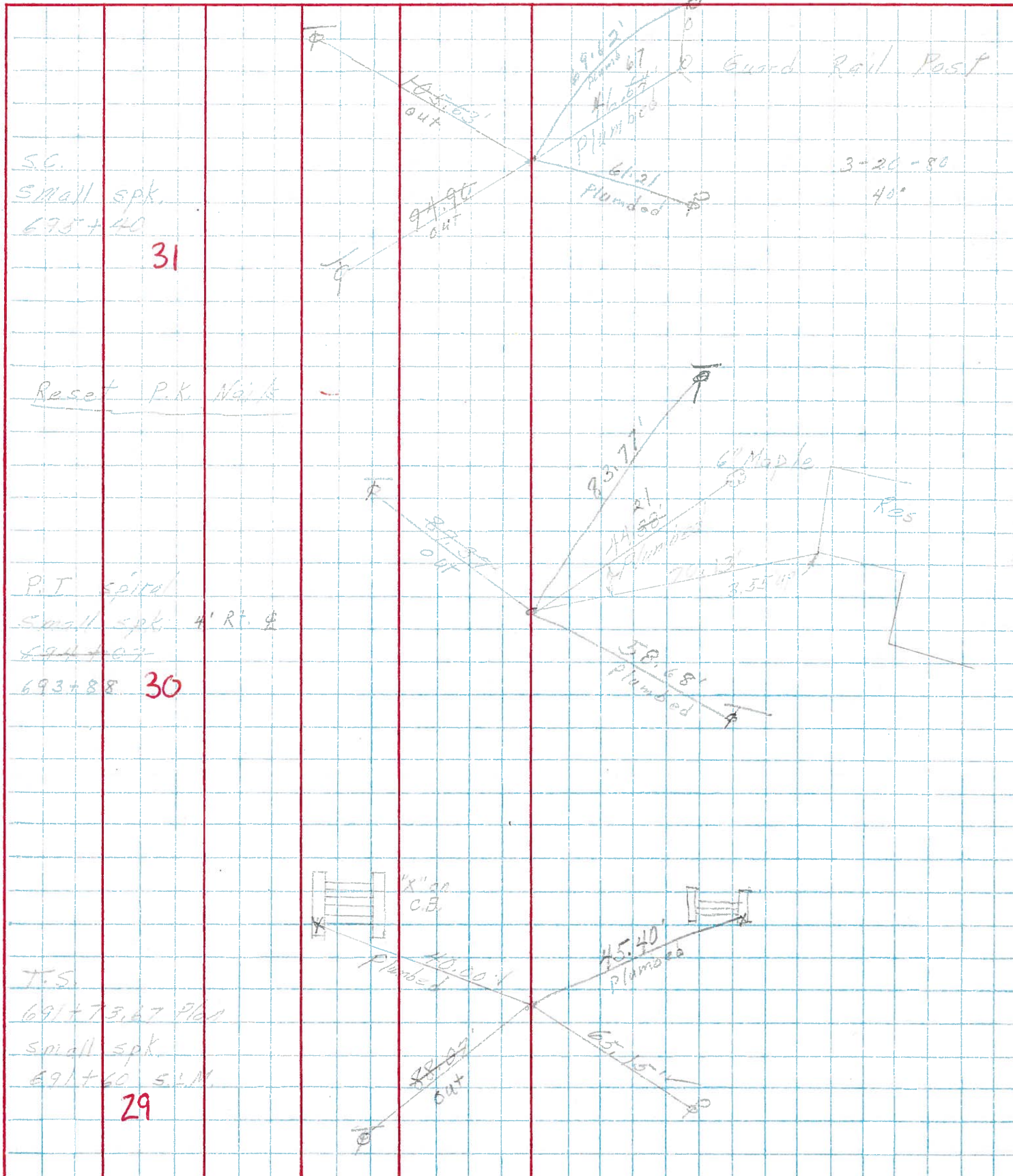
PERSONNEL TITLE PERSONNEL TITLE

COUNTY Ottawa DATE 7-29-74

S. R. 2 WEATHER Sunny

SEC. 0H-2 1307 Br. TEMP. 80°

DESCRIPTION Carroll Twp. JOB NO.

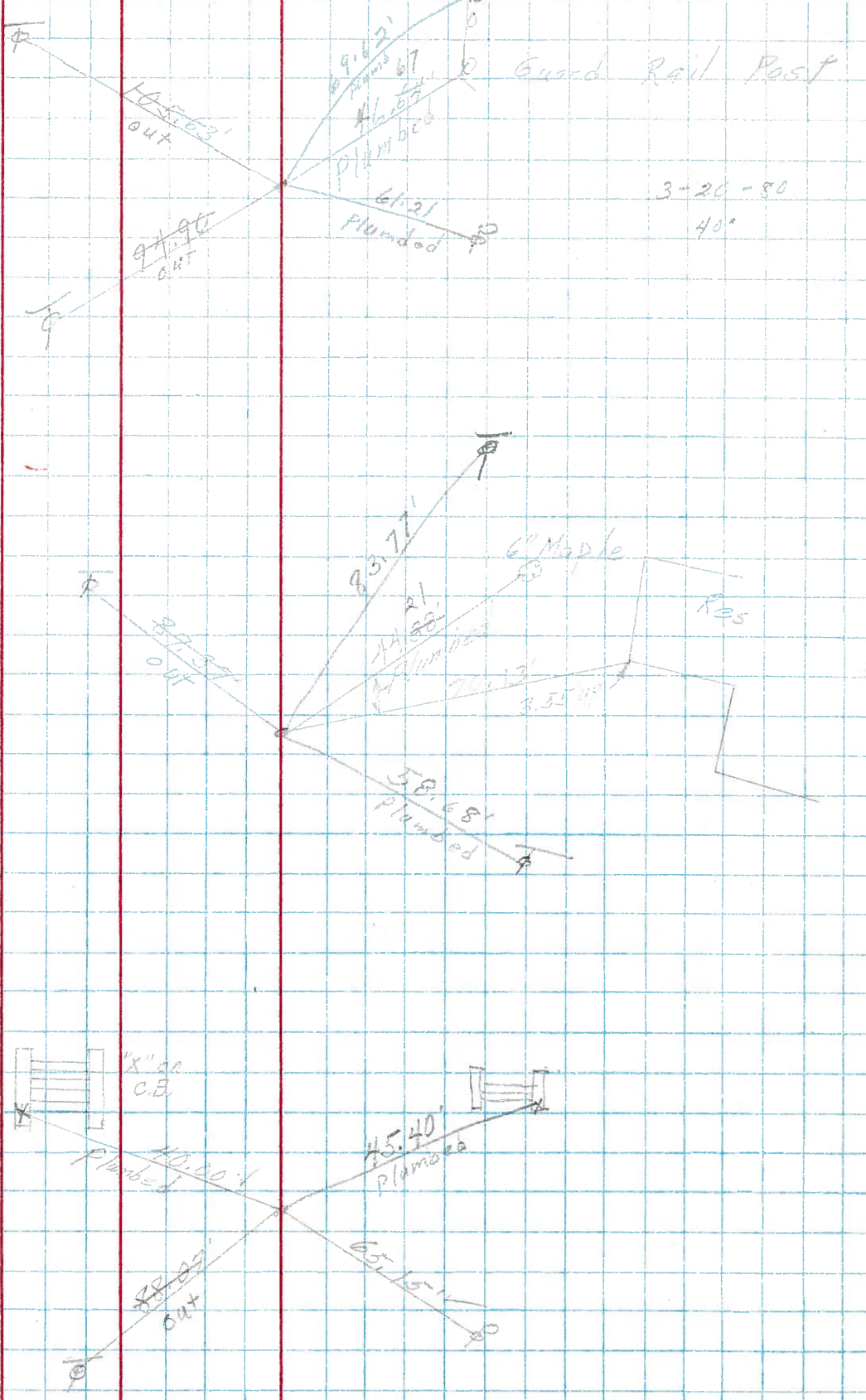


S.C.  
Small spk.  
695+40  
**31**

Reset P.K. Nail

P.T. spiral  
small spk. 4' Rt. &  
694+07  
693+88 **30**

T.S.  
691+73.67 Plm.  
small spk.  
691+60 S.L.M.  
**29**



PERSONNEL TITLE PERSONNEL TITLE

2-H-39

Hsh  
Leemaster  
Geyman

COUNTY Ottawa DATE Apr. 17, '64

S. R. #2 - Rusta Creek WEATHER Clear (Wind)

SEC. Ott. 2-13.07 (Br.) TEMP. 70°

I-801763  
JOB NO. 02451

DESCRIPTION Control Points & Ties

LEFT CENTER LINE RIGHT

(All Measurements Plum-Line)

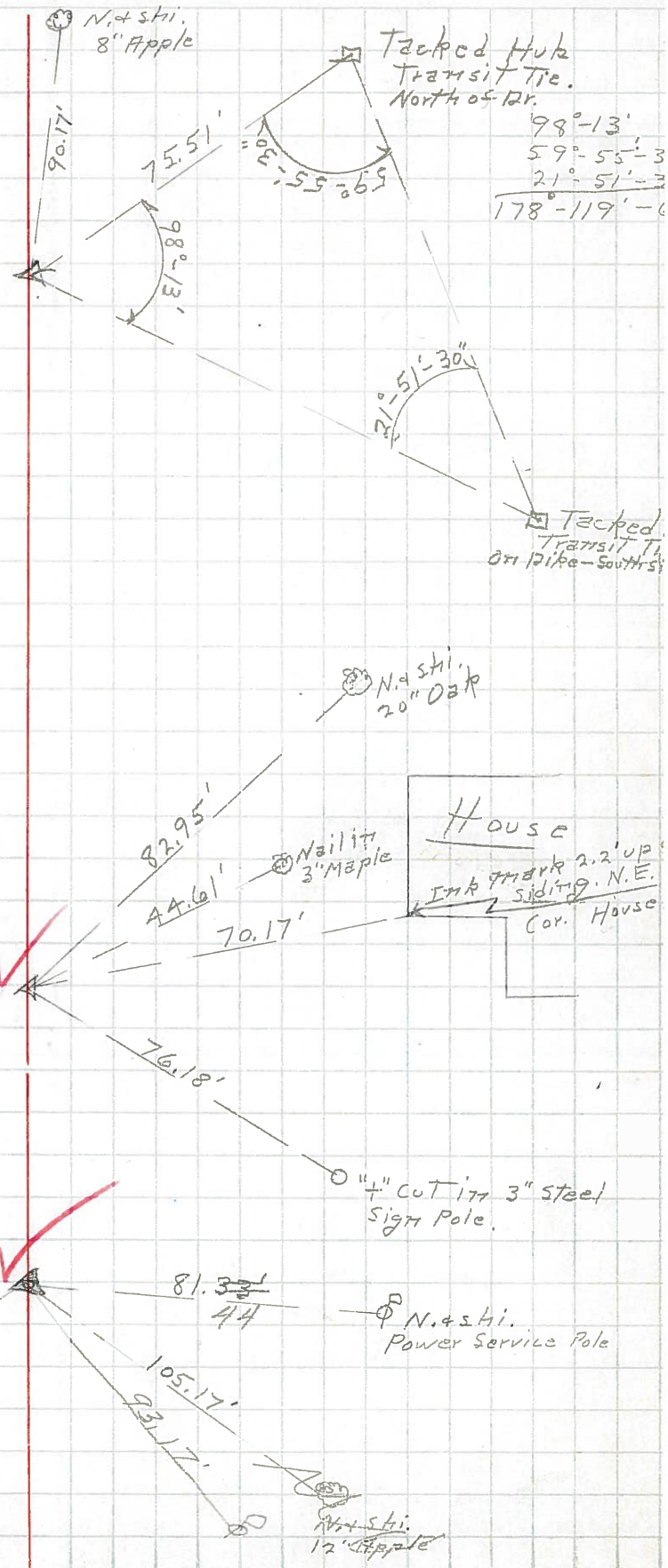
P.I. 698+01.69 Sur. & Const.  
Tacked Hub.

8/27/64  
Set R.R. Spk.

P.I. Spiral - D's. Sur. & Const.  
Tacked Hub.

8/26/64  
Set P.K. For  
T.M.O.M. Point

P.I. 689+79.44 R/W =  
P.O.T. 689+79.44 Sur. & Const.  
P.K. Nail 689+16 SLM  
Conc. Mon. 1/2 Rad



1" Cot in Conc. Cor. Post.

N. & S. Hi. 12" Apple