

O.D.O.T. DISTRICT 2 SURVEY OFFICE (USE ONLY)

PERSONNEL

REFERENCE NO. 32

SHEET 15 OF 25

NOTES RHOADES

DATE 9-8-20

ROUTE SR 2

H.C. O'DONNELL

WEATHER CLOUDY

COUNTY OTTAWA

R.C. AUBLE

TEMP. 70°

TOWNSHIP CARROLL

SECTION 24

DWG BY NIESE PID 95755

T 7 N R 15 E

TYPE MONUMENT 1" IPIN

~~ON SURFACE~~ - BELOW 7"

OFFSET  $\odot$  PAVEMENT 15.0'  $\pm$  : RT

1.0' TO RT EDGE PAVEMENT

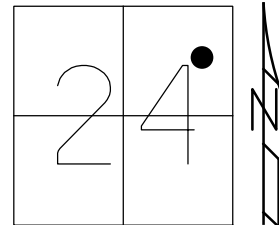
STATION: 695+23.18

HORZ.DATUM: NAD83(2011)

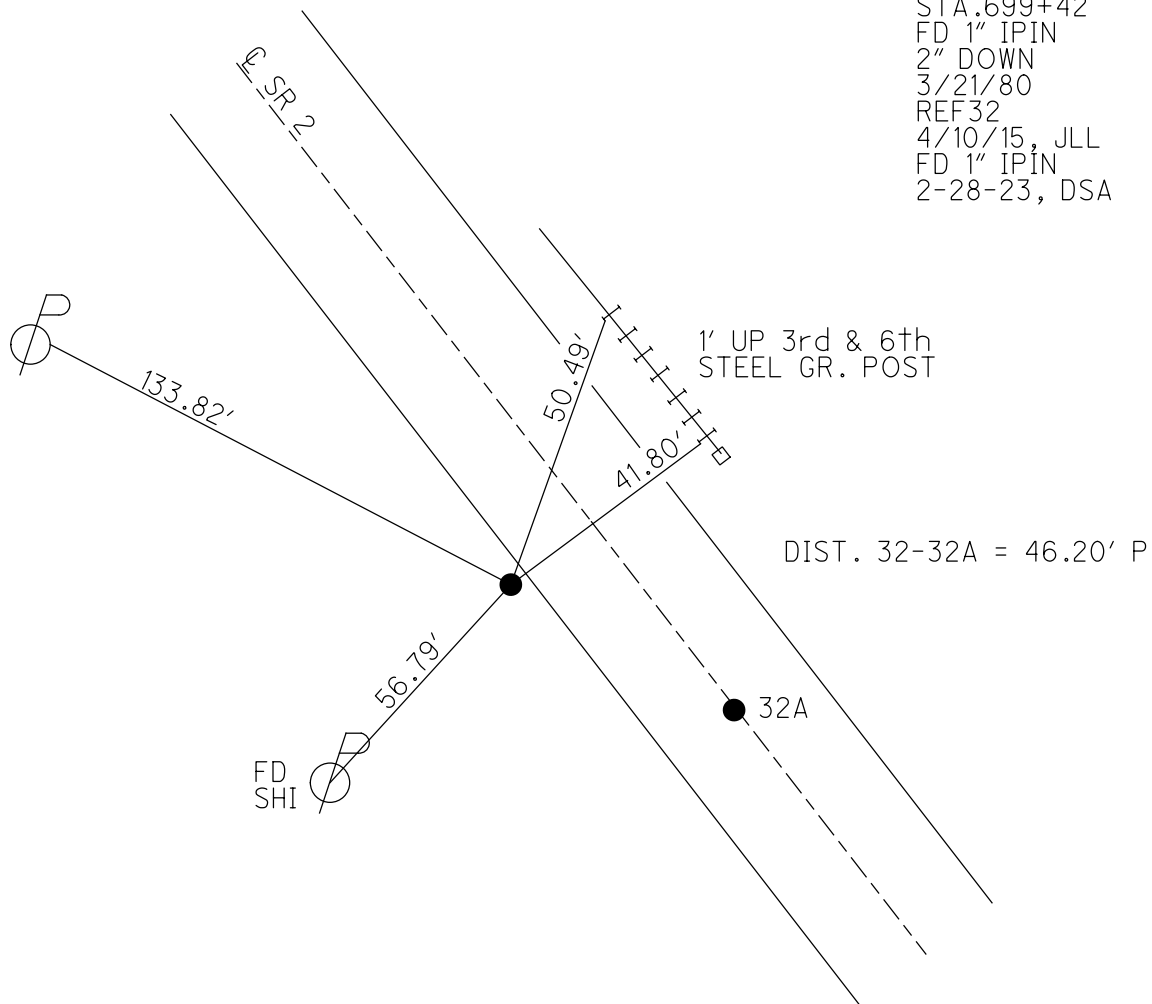
GEOID: 2012A

GRID: NORTHING: 689061.068

EASTING: 1812259.764



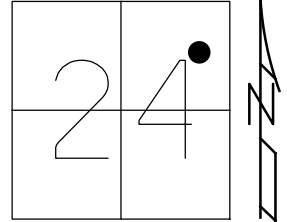
RECORD: P.I.  
 STA.699+42  
 FD 1" IPIN  
 2" DOWN  
 3/21/80  
 REF32  
 4/10/15, JLL  
 FD 1" IPIN  
 2-28-23, DSA



O.D.O.T. DISTRICT 2 SURVEY OFFICE (USE ONLY)

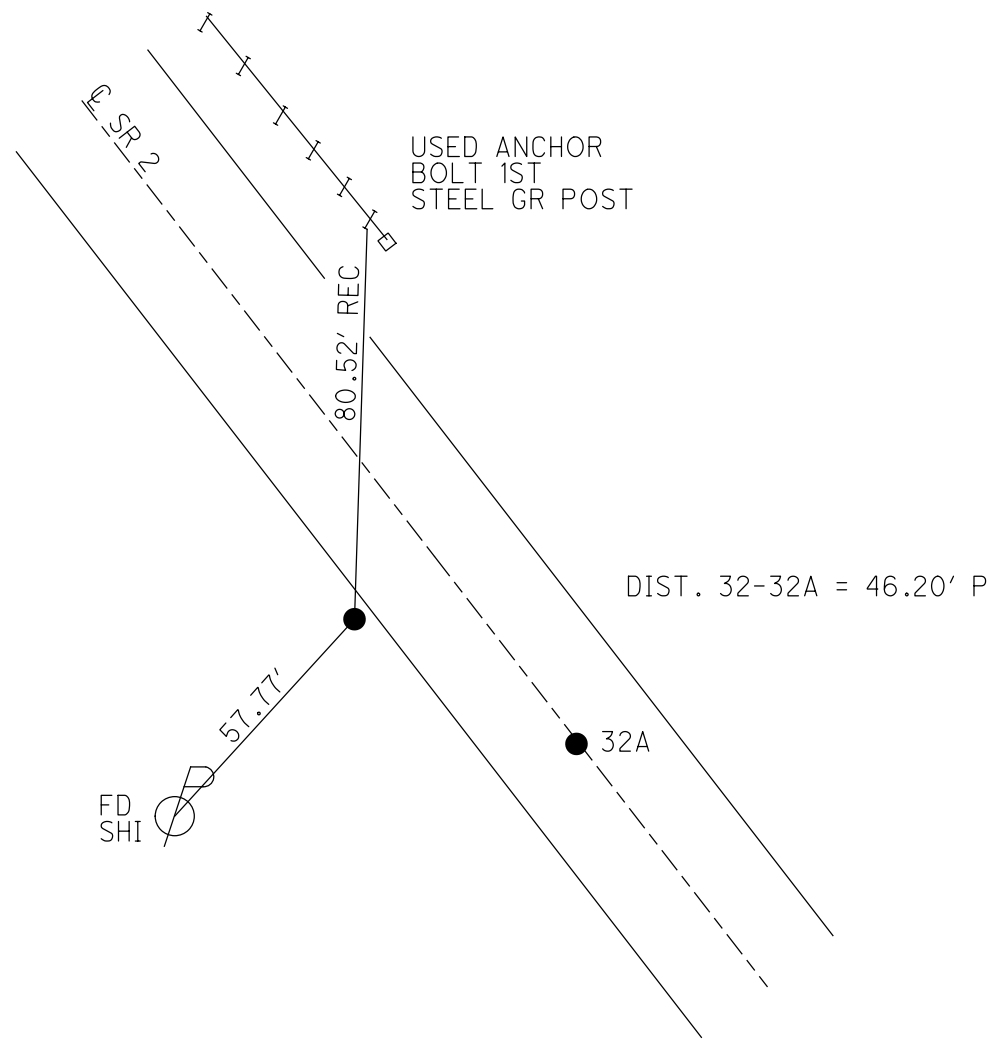
PERSONNEL \_\_\_\_\_ REFERENCE NO. 32 SHEET 15 OF 25  
 NOTES VAN DUSEN DATE 6/1/00 ROUTE SR 2  
 H.C. CORDES WEATHER CLOUDY COUNTY OTTAWA  
 R.C. BROWN TEMP. 70° TOWNSHIP CARROLL  
 SECTION 24  
 DWG BY NIESE PID 107060 T 7 N R 15 E

TYPE MONUMENT 1" IPIN  
~~ON SURFACE~~ - BELOW 6"  
 OFFSET 15.0' RT : ~~LT~~ : RT  
1.0' TO RT EDGE PAVEMENT  
 STATION: 695+23.18



HORZ. DATUM: NAD83(2011) GEOID: 2012A  
 GRID: NORTHING: 689061.068 EASTING: 1812259.764

RECORD: P.I. R/W  
 1" IPIN  
 5' OFF PAVT  
 2" DOWN  
 STA 699+42  
 3/21/80  
 REF32  
 4/10/15, JLL



O.D.O.T. DISTRICT 2 SURVEY OFFICE (USE ONLY)

PERSONNEL \_\_\_\_\_ REFERENCE NO. 32 SHEET 9 OF 15

NOTES VAN DUSEN DATE 6-1-00 ROUTE SR 2

H.C. CORDES WEATHER CLOUDY COUNTY OTTAWA

R.C. BROWN TEMP. 70°F TOWNSHIP CARROLL

SECTION 24

T 7 N R 15 E

TYPE MONUMENT 1" IPIN

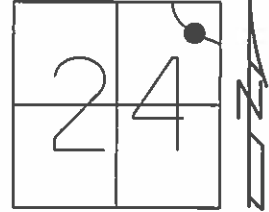
~~ON SURFACE~~ - BELOW 6"

~~LEFT~~ - CL PAV'T - RIGHT 15'

1' TO RT EDGE PAVEMENT

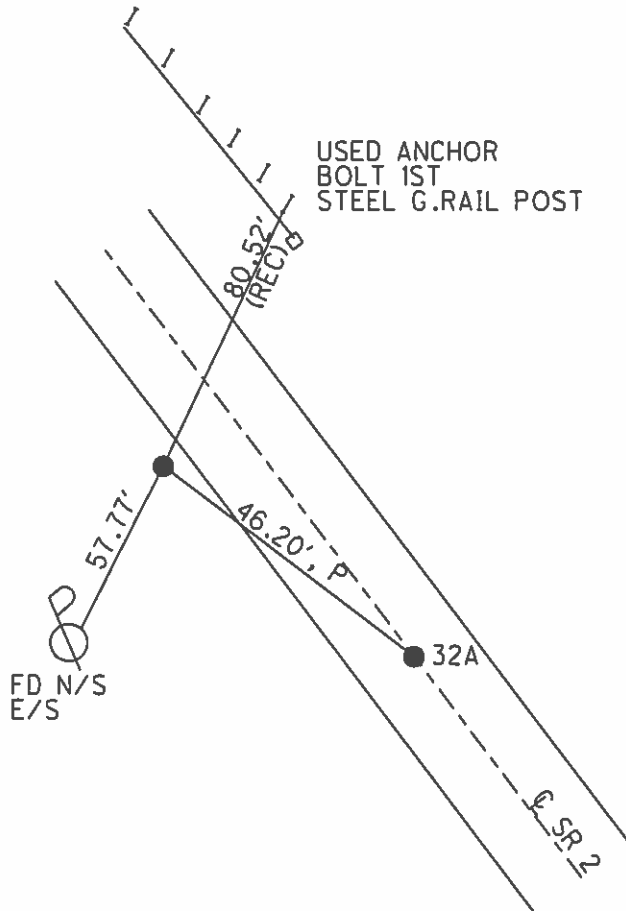
S.L.M. 699+73.84

Grid: Northing: 689061.0677 Easting: 1812259.7640



RECORD  
P.I. R/W  
1" I-PIN 5' OFF PAVT  
2" DOWN  
STA. 699+42  
3-21-1980

GPS, REF32  
4-10-15, JLL



# O.D.O.T. DISTRICT 2 SURVEY OFFICE

PERSONNEL

REFERENCE NO. 32

SHEET 9 OF 15

NOTES VAN DUSEN

H.C. CORDES

DATE 6-1-2000

ROUTE 2

R.C. BROWN

WEATHER CLOUDY

COUNTY OTTAWA

TEMP. +70°F

TOWNSHIP CARROLL

SECTION 2A

T. 15 N. R. 15 E.

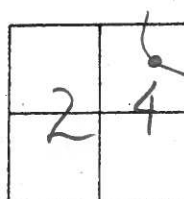
TYPE MONUMENT A' 1" IRON / B' PK / WASHER

~~ON~~ SURFACE - BELOW A' 6" BELOW / B' 2" BELOW

~~LEFT - & PAV'T. - RIGHT~~ A' 15' ± / B' ON &

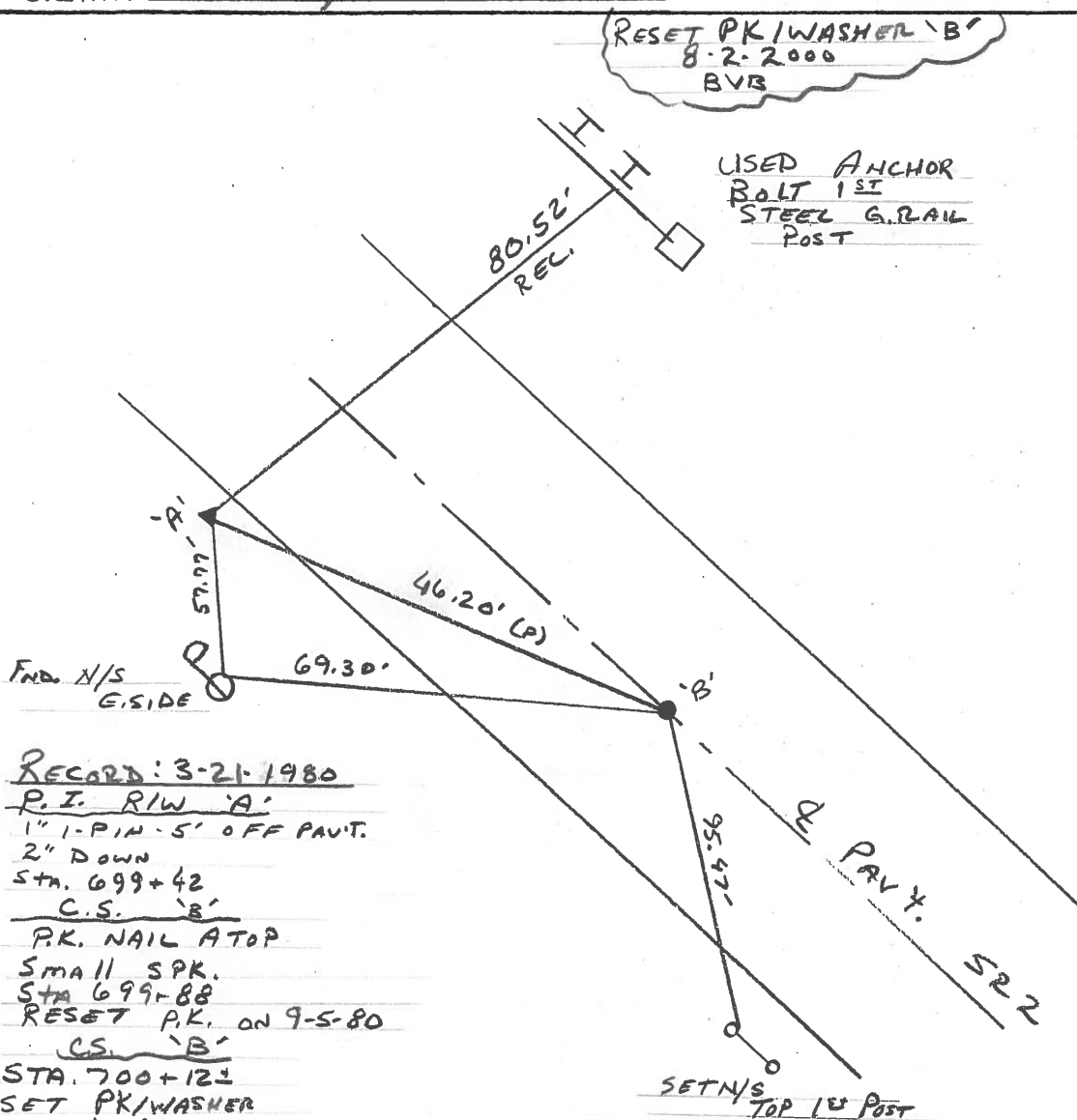
B' 12' TO RT EDGE PAVEMENT / A' 1' RT. OF RT EDGE of PAVED BERM

S.L.M. A' 699+70 / B' 700+12 ±



RESET PK/WASHER 'B'  
8-2-2000  
BVB

USED ANCHOR  
BOLT 1" ±  
STEEL G. RAIL  
POST



RECORD: 3-21-1980  
P.I. RIW 'A'  
1" 1-PIN-5' OFF PAV'T.  
2" Down  
Sta. 699+42  
C.S. 'B'  
PK. NAIL ATOP  
Small SPK.  
Sta 699+88  
RESET PK. ON 9-5-80  
C.S. 'B'  
STA. 700+12 ±  
SET PK/WASHER  
6-14-1993  
R.C.C.

O.D.O.T. DISTRICT 2 SURVEY OFFICE

PERSONNEL

REFERENCE NO. 32

SHEET 8 OF 13

NOTES CHENEY

H.C. RIPPLE

DATE 4-20-1993

ROUTE #2

R.C. BARBOUR

WEATHER SUNNY

COUNTY OTTAWA

GEYMAN

TEMP. 65°

TOWNSHIP CARROLL

SECTION 24

T7 NR 15E

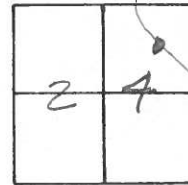
TYPE MONUMENT <sup>"A"</sup> 1" IRON ROD <sup>"B"</sup> PK/WASHER

~~ON~~ SURFACE - BELOW <sup>"A"</sup> 6" <sup>"B"</sup> 2"

LEFT - C PAV'T. - RIGHT <sup>"A"</sup> 15' ± <sup>"B"</sup> ON E

<sup>"B"</sup> 12' TO RT. EDGE PAVEMENT <sup>"A"</sup> 1' RT. OF EDGE OF

S.L.M. <sup>"A"</sup> 699+70 <sup>"B"</sup> 700+12 ± PAVED BERM



RECORD: 3-21-1980

P.I. RIW "A"

1" IRON PIN - 5' OFF PAV'T.

2" DOWN

STA. 699+42

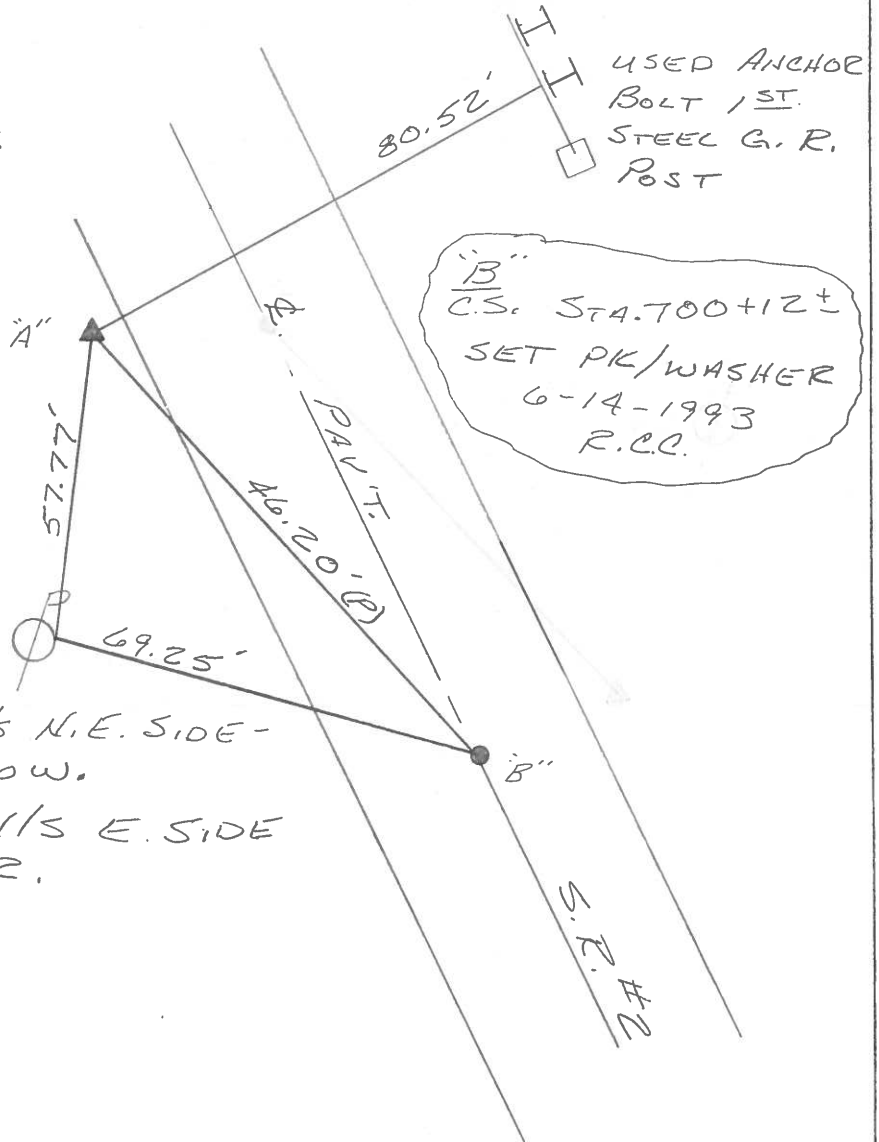
C.S. "B"

P.K. NAIL ATOP

SMALL SPK.

STA. 699+88

RE-SET P.K. ON 9-5-80



FD. N/S N.E. SIDE -  
TOO LOW.  
SET N/S E. SIDE  
HIGHER.

Q.D.O.T. DISTRICT 2 SURVEY OFFICE

Sht.      of     

County Ottawa S.R. # 2

Date 3-21-80

Township Carroll

Weather Fair

Section 24

Temp. 40°

T 2 N, R 15 E

Personnel Schneider

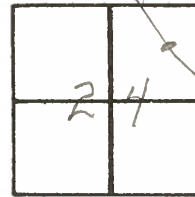
Mosser

Barbour

Ripple

Geyman

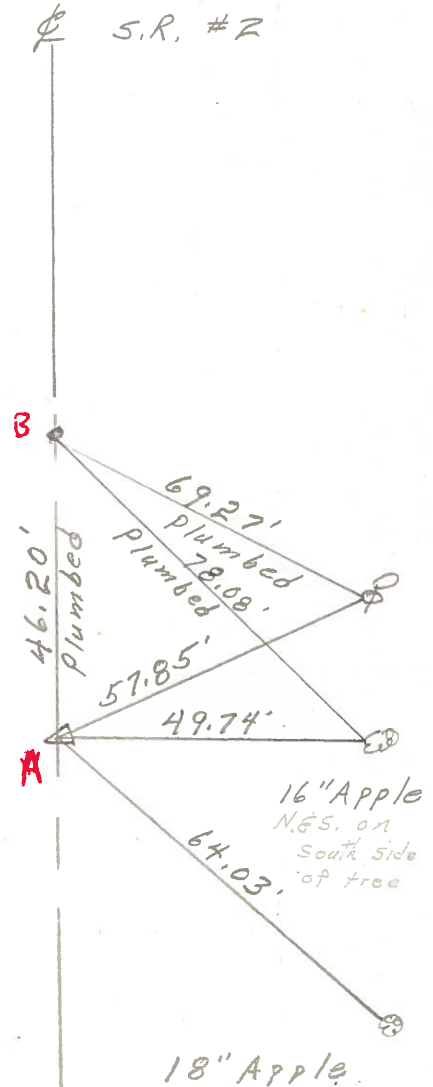
32



C.S.  
small spk.  
P.K. on top  
699+88

Reset P.K. Nail  
9-5-80

P.I. R/W  
1" Iron Pin 5' off Pavmt.  
2" down  
699+4R





PERSONNEL TITLE PERSONNEL TITLE

COUNTY Ottawa

DATE 11-7-74  
7-29-74

S. R. 2

WEATHER Fair

SEC. Off 2 - 13.07 Br.

TEMP. 80°

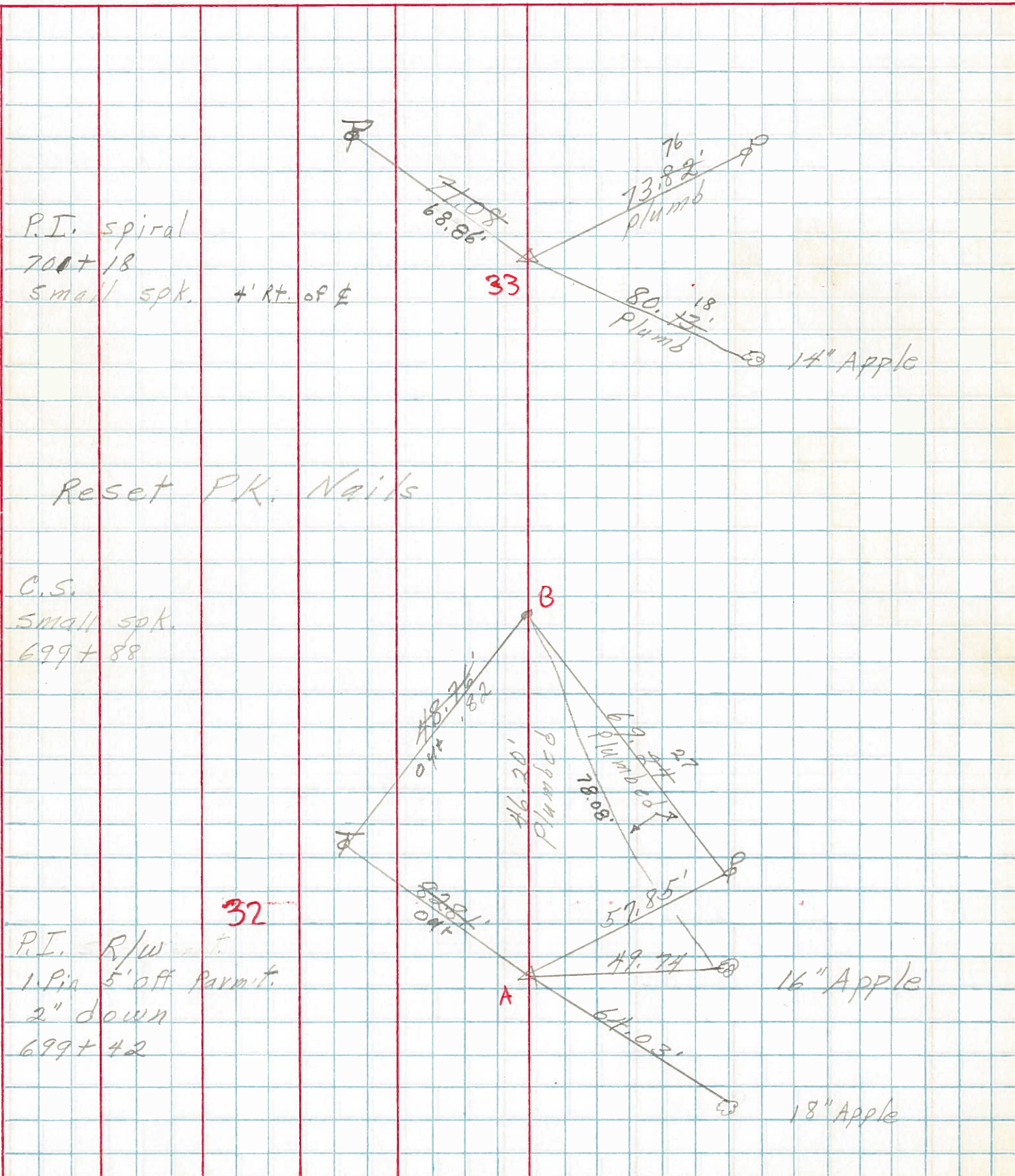
DESCRIPTION Carroll Twp.

JOB NO. \_\_\_\_\_

LEFT

CENTER LINE

RIGHT



P.I. spiral  
700+18  
small spk.

4' Rt. of C

33

14" Apple

Reset PK: Nails

C.S.  
small spk.  
699+88

B

32

P.I. R/W  
1 Pin 5' off Perm't.  
2" down  
699+42

A

16" Apple

18" Apple



PERSONNEL TITLE PERSONNEL TITLE

COUNTY Ottawa DATE Apr. 28, '64

S. R. #2-Rush Creek WEATHER Clear

SEC Ott. 2-13.07 (Br.) TEMP. 70° I-801763

DESCRIPTION Control Points + Ties JOB NO. 02451

(All Measurements Plum-Line)

8/26/64 Set P.K. For Mon. Point

S.T. 704+19.00 Bk. - Const. + Sur. =  
704+~~16.00~~ Hhd. - R/W  
P.K. Nail

8/27/64 Set P.R. Spk.

P.I. Spiral - S. Sur. + Const.  
P.K. Nail

8/27/64 Set I.P.

P.I. 699+74.49 R/W  
P.K. Nail

