

O.D.O.T. DISTRICT 2 SURVEY OFFICE (USE ONLY)

PERSONNEL

REFERENCE NO. 32 A

SHEET 16 OF 25

NOTES VAN DUSEN

DATE 6/1/00

ROUTE SR 2

H.C. CORDES

WEATHER CLOUDY

COUNTY OTTAWA

R.C. BROWN

TEMP. 70°

TOWNSHIP CARROLL

SECTION 24

DWG BY NIESE

PID 107060

T 7 N R 15 E

TYPE MONUMENT P.K./WASHER

~~ON SURFACE~~ - BELOW 2"

OFFSET  $\odot$  PAVEMENT ON ~~RT~~ : ~~RT~~

12.0' TO RT EDGE PAVEMENT

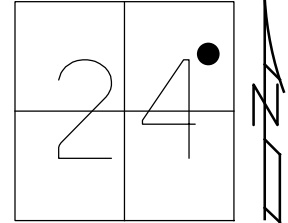
STATION: 695+67.24

HORIZ.DATUM: NAD83(2011)

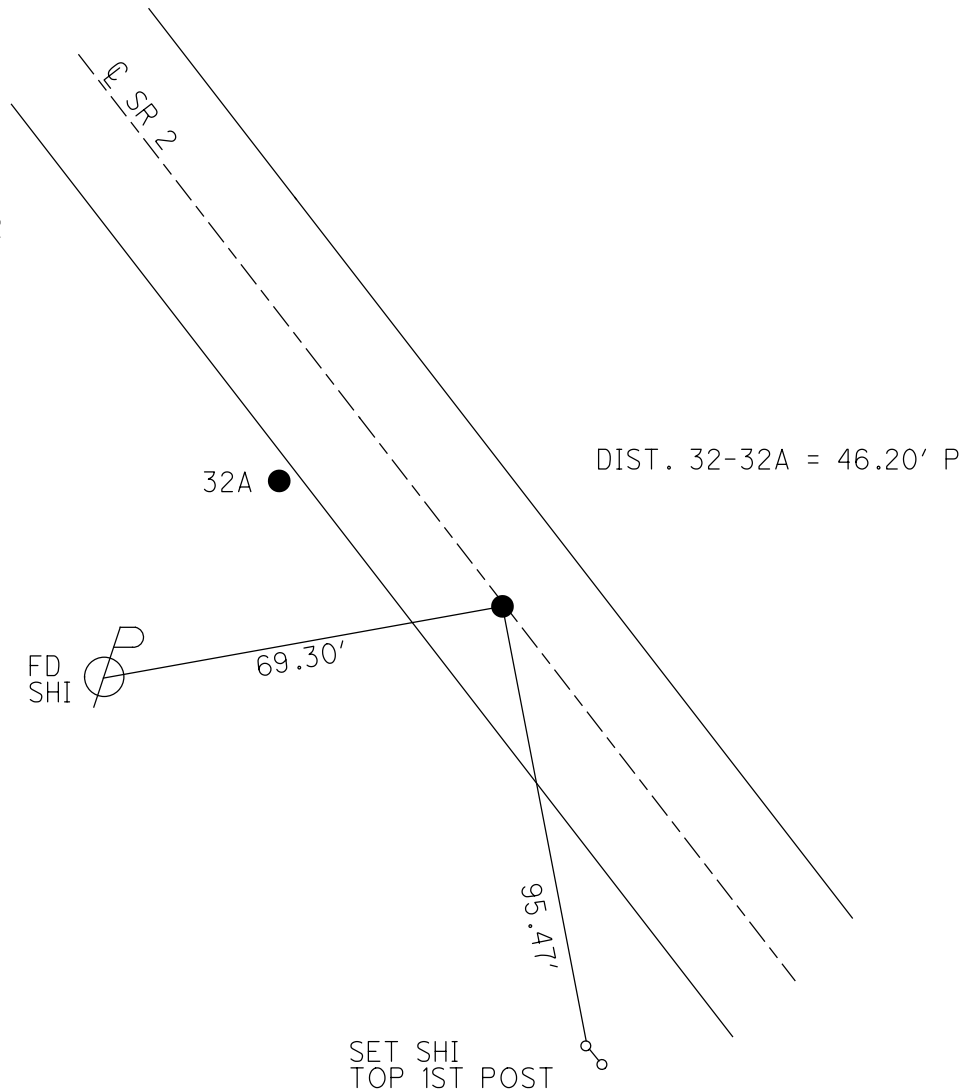
GEOID: 2012A

GRID: NORTHING: 689044.828

EASTING: 1812303.039



RECORD: C.S.  
 STA 699.88  
 P.K.NAIL  
 ATOP SM.SPIKE  
 3/21/80  
 SET P.K.NAIL  
 9/5/80  
 SET P.K./WASHER  
 6/14/93, RCC  
 FD P.K.SHANK  
 REFA32  
 4/10/15, JLL  
 D.N.F.  
 4/1/19, JFO  
 DID NOT SET  
 7-12-23, DSA



O.D.O.T. DISTRICT 2 SURVEY OFFICE (USE ONLY)

PERSONNEL \_\_\_\_\_ REFERENCE NO. 32 A SHEET 16 OF 25  
 NOTES VAN DUSEN DATE 6/1/00 ROUTE SR 2  
 H.C. CORDES WEATHER CLOUDY COUNTY OTTAWA  
 R.C. BROWN TEMP. 70° TOWNSHIP CARROLL  
 DWG BY NIESE PID 107060 SECTION 24  
 T 7 N R 15 E

TYPE MONUMENT P.K./WASHER

~~ON SURFACE~~ - BELOW 2"

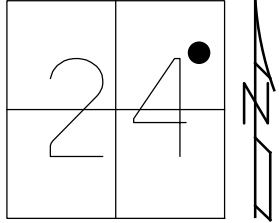
OFFSET ☑ PAVEMENT ON ~~RT~~ : ~~LT~~

12.0' TO RT EDGE PAVEMENT

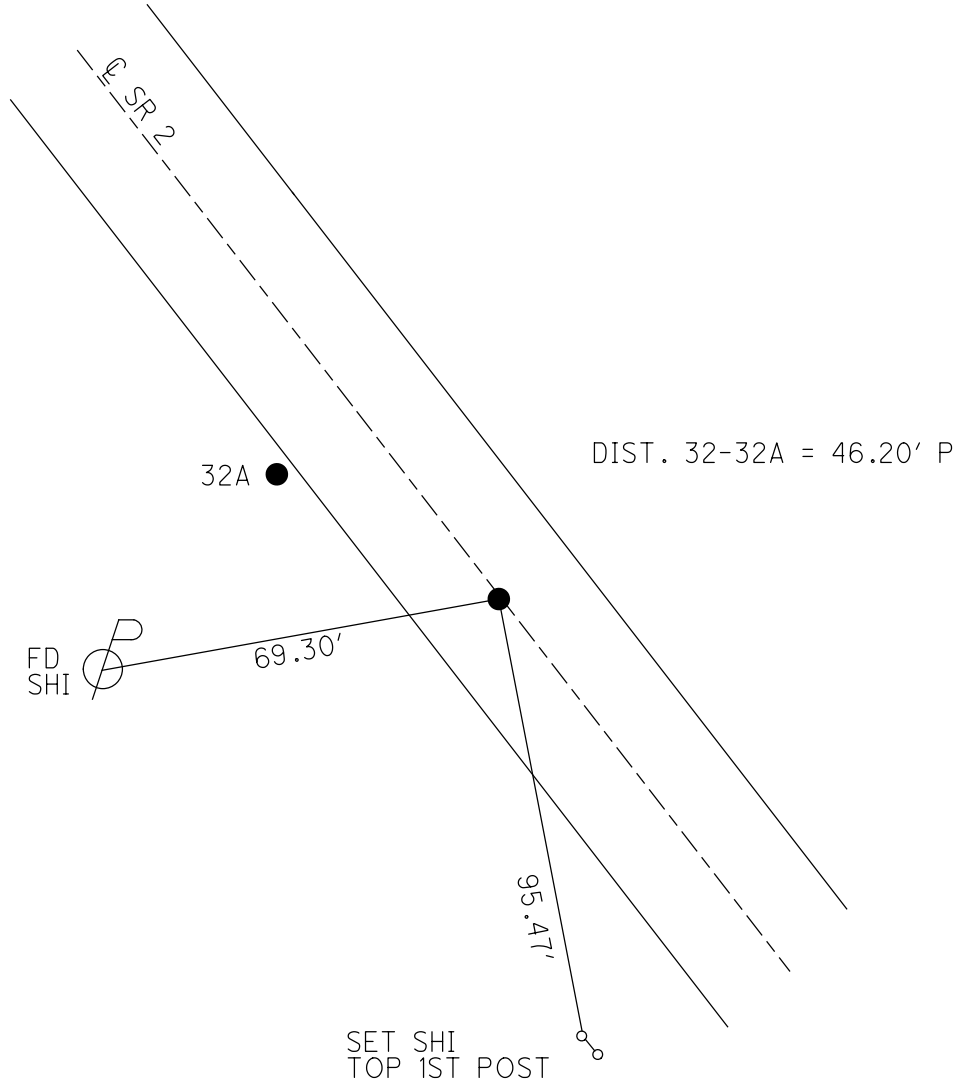
STATION: 695+67.24

HORZ.DATUM: NAD83(2011) GEOID: 2012A

GRID: NORTHING: 689044.828 EASTING: 1812303.039



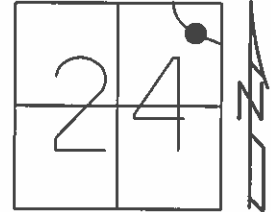
RECORD: C.S.  
 STA 699.88  
 P.K.NAIL  
 ATOP SM.SPIKE  
 3/21/80  
 SET P.K.NAIL  
 9/5/80  
 SET P.K./WASHER  
 6/14/93, RCC  
 FD P.K.SHANK  
 REFA32  
 4/10/15, JLL  
 D.N.F.  
 4/1/19, JFO



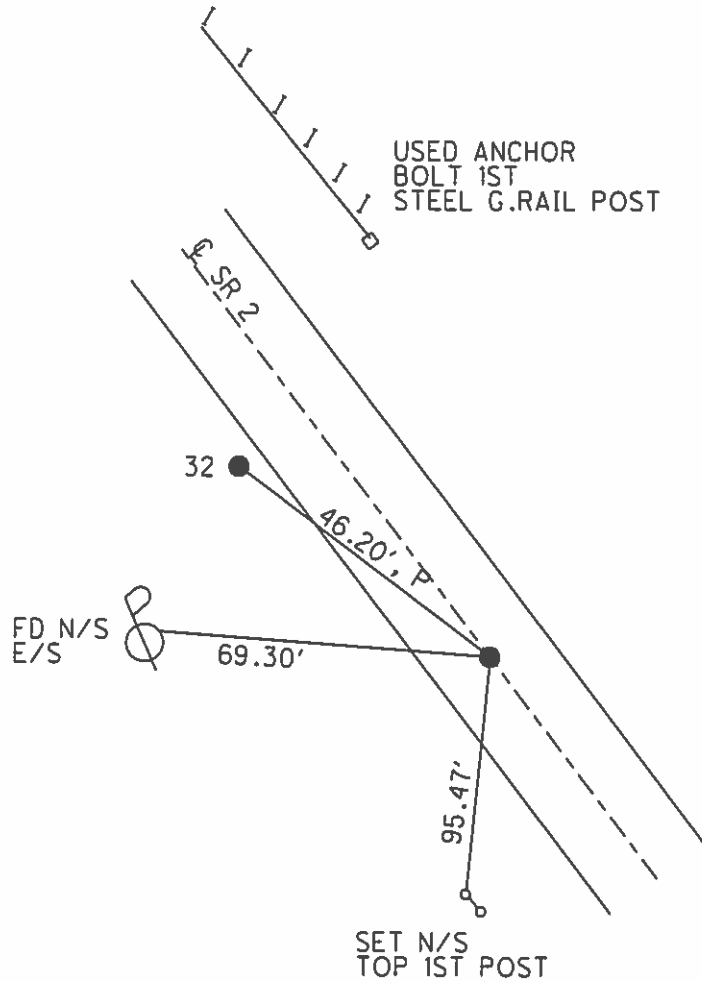
O.D.O.T. DISTRICT 2 SURVEY OFFICE (USE ONLY)

PERSONNEL \_\_\_\_\_ REFERENCE NO. 32A SHEET 9 A OF 15  
 NOTES VAN DUSEN DATE 6-1-00 ROUTE SR 2  
 H.C. CORDES WEATHER CLOUDY COUNTY OTTAWA  
 R.C. BROWN TEMP. 70°F TOWNSHIP CARROLL  
 SECTION 24  
 T 7 N R 15 E

TYPE MONUMENT PK/WASHER  
~~ON SURFACE~~ - BELOW 2"  
 LEFT - ☉ PAV'T - RIGHT ON  
12' TO RT EDGE PAVEMENT  
 S.L.M. 700+17.19  
 Grid: Northing: 689044.8276 Easting: 1812303.0390



RECORD  
 C.S.  
 PK.NAIL  
 ATOP SM. SPK.  
 STA. 699.88  
 3-21-1980  
 RESET PK.  
 9-5-1980  
 C.S. "B"  
 STA. 700+12  
 SET PK/WASHER  
 6-14-1993, RCC



# O.D.O.T. DISTRICT 2 SURVEY OFFICE

PERSONNEL

REFERENCE NO. 32

SHEET 9 OF 15

NOTES VAN DUSEN

H.C. CORDES

DATE 6-1-2000

ROUTE 2

R.C. BROWN

WEATHER CLOUDY

COUNTY OTTAWA

TEMP. +70°F

TOWNSHIP CARROLL

SECTION 2A

T. 15 N. R. 15 E.

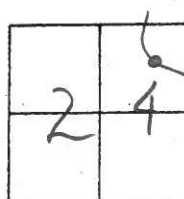
TYPE MONUMENT A' 1" IRON / B' PK / WASHER

~~ON~~ SURFACE - BELOW A' 6" BELOW / B' 2" BELOW

~~LEFT -~~ CL PAV'T. - RIGHT A' 15' ± / B' ON CL

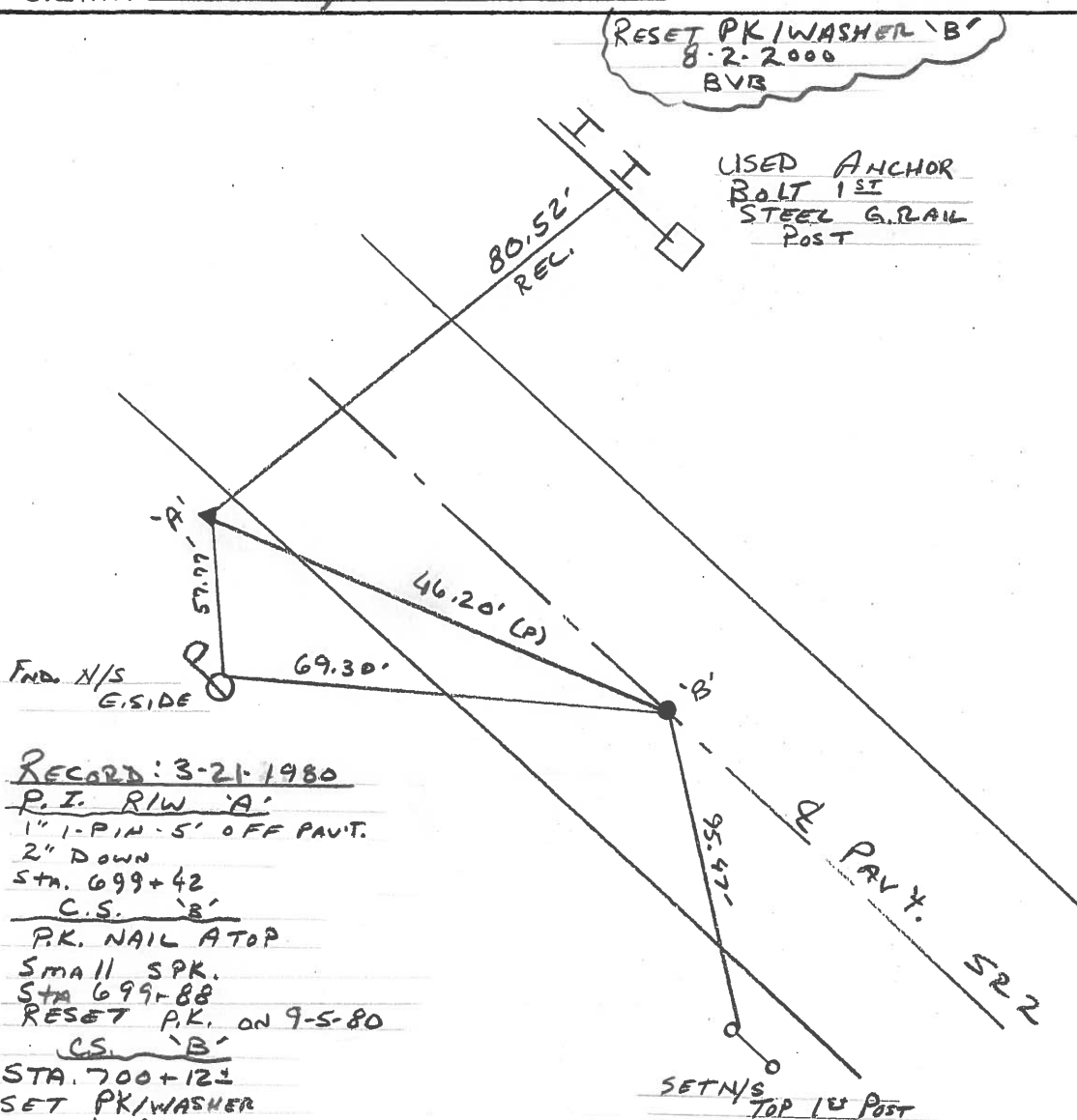
B' 12' TO RT EDGE PAVEMENT / A' 1' RT. OF RT EDGE of PAVED BERM

S.L.M. A' 699+70 / B' 700+12 ±



RESET PK/WASHER 'B'  
8-2-2000  
BVB

USED ANCHOR  
BOLT 1" ±  
STEEL G. RAIL  
POST



RECORD: 3-21-1980  
P.I. RIW 'A'  
1" 1-PIN-5' OFF PAVT.  
2" Down  
Sta. 699+42  
C.S. 'B'  
PK. NAIL ATOP  
Small SPK.  
Sta 699+88  
RESET PK. ON 9-5-80  
C.S. 'B'  
STA. 700+12 ±  
SET PK/WASHER  
6-14-1993  
R.C.C.

O.D.O.T. DISTRICT 2 SURVEY OFFICE

PERSONNEL

REFERENCE NO. 32

SHEET 8 OF 13

NOTES CHENEY

H.C. RIPPLE

DATE 4-20-1993

ROUTE #2

R.C. BARBOUR

WEATHER SUNNY

COUNTY OTTAWA

GEYMAN

TEMP. 65°

TOWNSHIP CARROLL

SECTION 24

T7 NR 15E

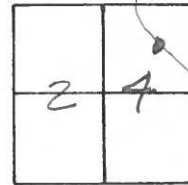
TYPE MONUMENT <sup>"A"</sup> 1" IRON ROD <sup>"B"</sup> PK/WASHER

~~ON~~ SURFACE - BELOW <sup>"A"</sup> 6" <sup>"B"</sup> 2"

LEFT - C PAV'T. - RIGHT <sup>"A"</sup> 15' ± <sup>"B"</sup> ON E

<sup>"B"</sup> 12' TO RT. EDGE PAVEMENT <sup>"A"</sup> 1' RT. OF EDGE OF

S.L.M. <sup>"A"</sup> 699+70 <sup>"B"</sup> 700+12 ± PAVED BERM



RECORD: 3-21-1980

P.I. RIW "A"

1" IRON PIN - 5' OFF PAV'T.

2" DOWN

STA. 699+42

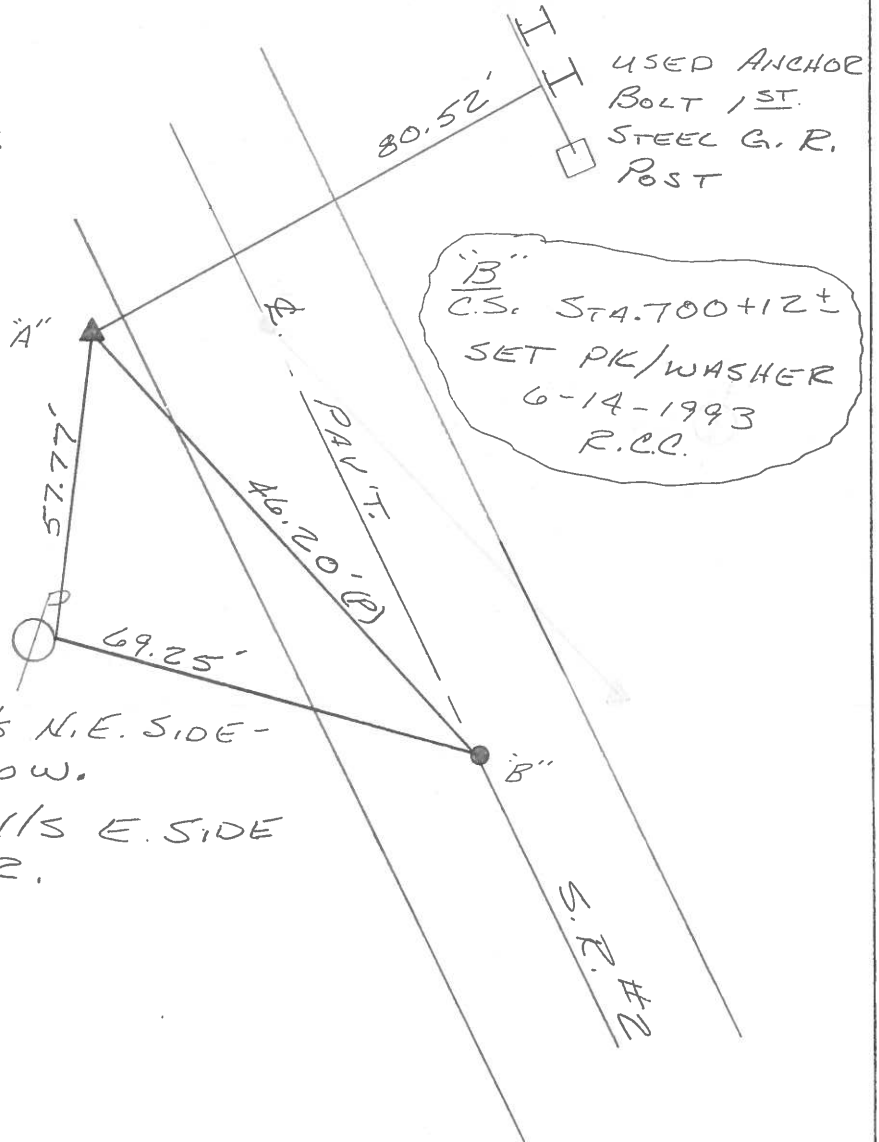
C.S. "B"

P.K. NAIL ATOP

SMALL SPK.

STA. 699+88

RE-SET P.K. ON 9-5-80



FD. N/S N.E. SIDE - TOO LOW.

SET N/S E. SIDE HIGHER.

Q.D.O.T. DISTRICT 2 SURVEY OFFICE

Sht.      of     

County Ottawa S.R. # 2

Date 3-21-80

Township Carroll

Weather Fair

Section 24

Temp. 40°

T 2 N, R 15 E

Personnel Schneider

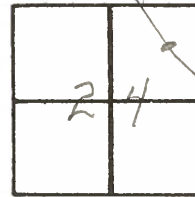
Mosser

Barbour

Ripple

Geyman

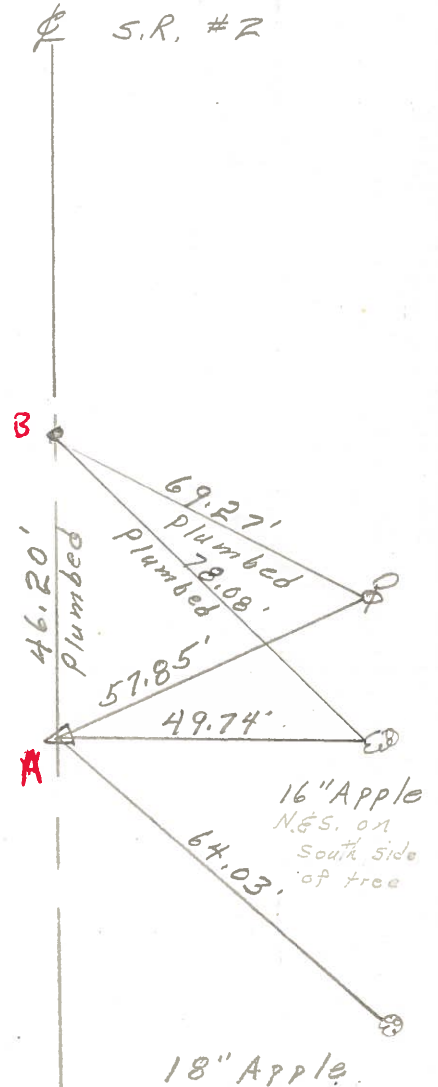
32



C.S.  
small spk.  
P.K. on top  
699+88

Reset P.K. Nail  
9-5-80

P.I. R/W  
1" Iron Pin 5' off Pavmt.  
2" down  
699+42





PERSONNEL TITLE PERSONNEL TITLE

COUNTY Ottawa DATE Apr. 28, '64

S. R. #2-Rush Creek WEATHER Clear

SEC Ott. 2-13.07 (Br.) TEMP. 70° I-801763

DESCRIPTION Control Points + Ties JOB NO. 02451

(All Measurements Plum-Line)

8/26/64 Set P.K. For Mon. Point

S.T. 704+19.00 Bk. - Const. + Sur. =  
704+~~16.00~~ Hhd. - R/W  
P.K. Nail

8/27/64 Set P.R. Spk.

P.I. Spiral - S. Sur. + Const.  
P.K. Nail

8/27/64 Set I.P.

P.I. 699+74.49 R/W  
P.K. Nail

