

O.D.O.T. DISTRICT 2 SURVEY OFFICE (USE ONLY)

PERSONNEL

REFERENCE NO. 34

SHEET 18 OF 25

NOTES RHOADES

DATE 5-11-23

ROUTE SR 2

H.C. AUBLE

WEATHER SUNNY

COUNTY OTTAWA

R.C. NIESE

TEMP. 73°

TOWNSHIP CARROLL

DWG BY NIESE PID 107060

SECTION 24

T 7 N R 15 E

TYPE MONUMENT MAG/WASHER

ON SURFACE - ~~BELOW~~ ON

OFFSET CL PAVEMENT ON LT : RT

12.0' TO RT EDGE PAVEMENT

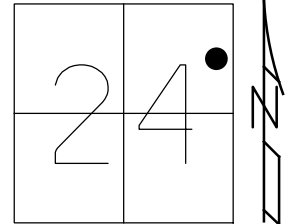
STATION: 699+65.11

HORZ.DATUM: NAD83(2011)

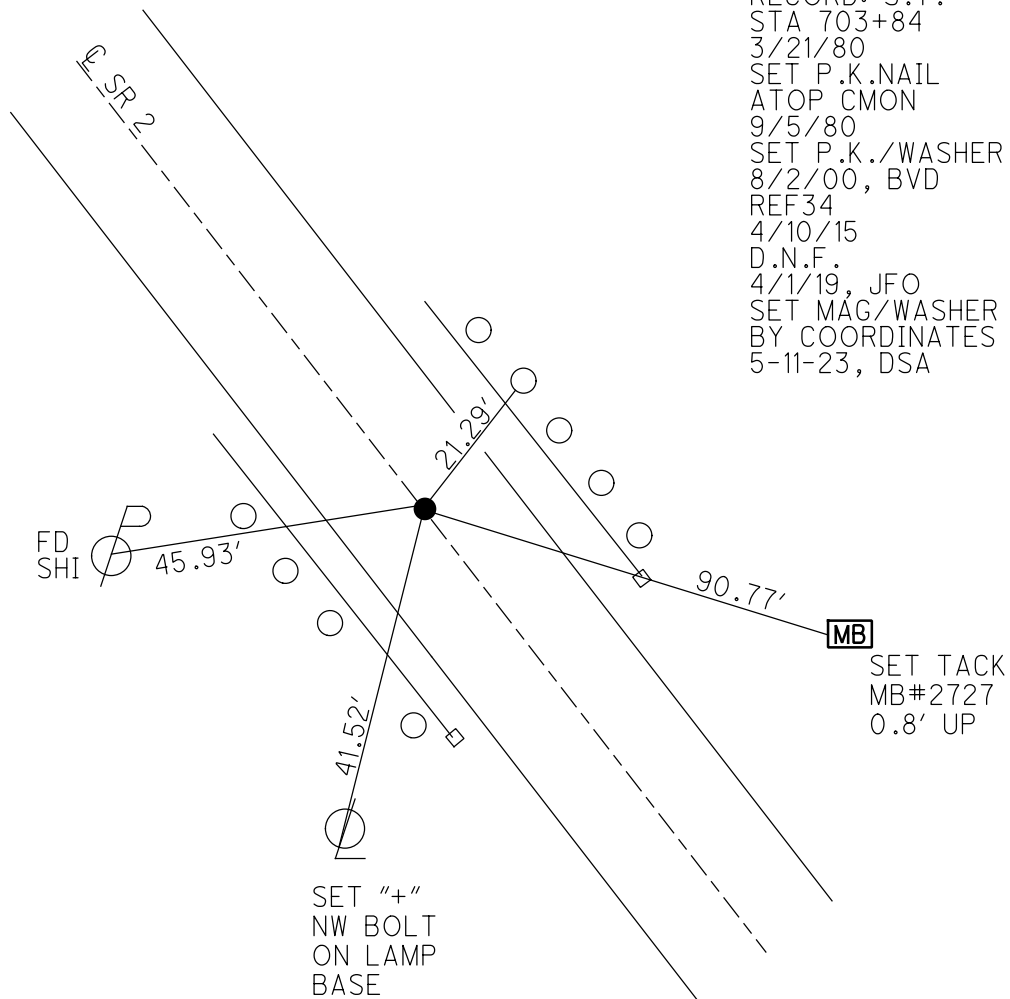
GEOID: 2012A

GRID: NORTHING: 688805.378

EASTING: 1812621.981



RECORD: S.T.  
 STA 703+84  
 3/21/80  
 SET P.K.NAIL  
 ATOP CMON  
 9/5/80  
 SET P.K./WASHER  
 8/2/00, BVD  
 REF34  
 4/10/15  
 D.N.F.  
 4/1/19, JFO  
 SET MAG/WASHER  
 BY COORDINATES  
 5-11-23, DSA



O.D.O.T. DISTRICT 2 SURVEY OFFICE (USE ONLY)

PERSONNEL

REFERENCE NO. 34

SHEET 18 OF 25

NOTES VAN DUSEN

DATE 6/1/00

ROUTE SR 2

H.C. CORDES

WEATHER CLOUDY

COUNTY OTTAWA

R.C. BROWN

TEMP. 80°

TOWNSHIP CARROLL

DWG BY NIESE

PID 107060

SECTION 24

T 7 N R 15 E

TYPE MONUMENT P.K./WASHER

ON SURFACE - ~~BELOW~~ ON

OFFSET  $\varnothing$  PAVEMENT ON LT : RT

12.0' TO RT EDGE PAVEMENT

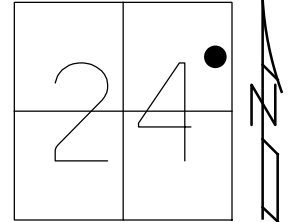
STATION: 699+65.11

HORZ.DATUM: NAD83(2011)

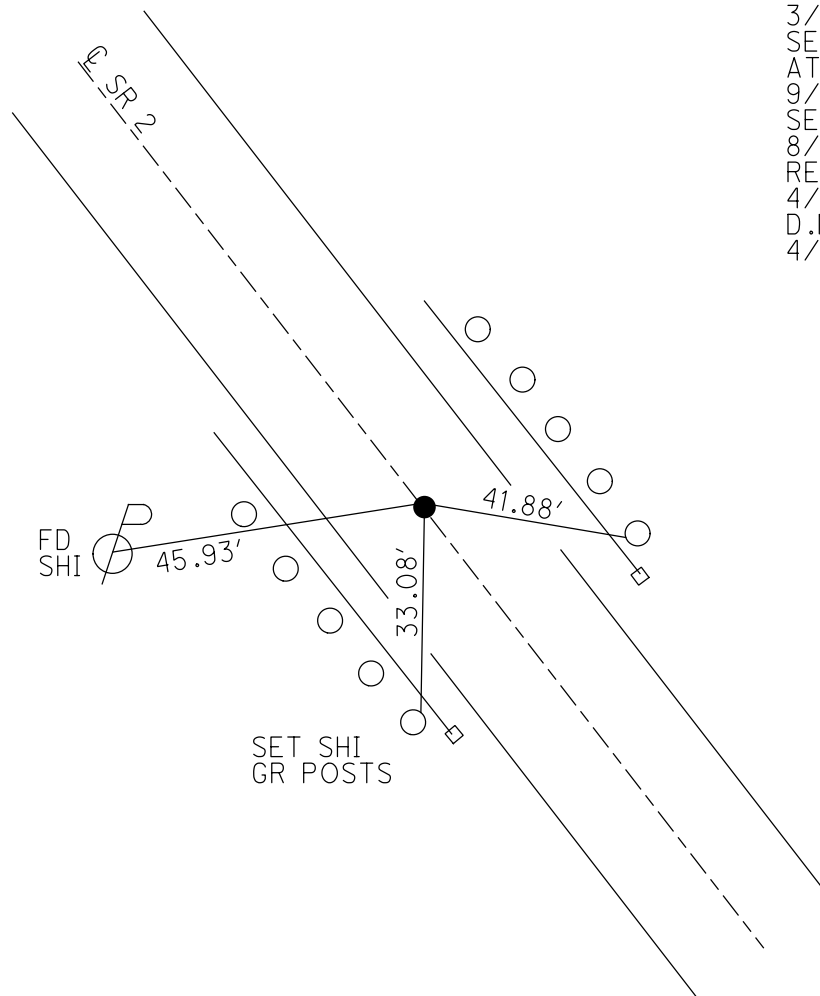
GEOID: 2012A

GRID: NORTHING: 688805.378

EASTING: 1812621.981



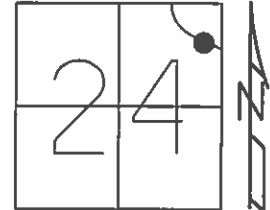
RECORD: S.T.  
 STA 703+84  
 3/21/80  
 SET P.K.NAIL  
 ATOP CMON  
 9/5/80  
 SET P.K./WASHER  
 8/2/00, BVD  
 REF34  
 4/10/15  
 D.N.F.  
 4/1/19, JFO



O.D.O.T. DISTRICT 2 SURVEY OFFICE (USE ONLY)

PERSONNEL \_\_\_\_\_ REFERENCE NO. 34 SHEET 11 OF 15  
 NOTES VAN DUSEN DATE 6-1-00 ROUTE SR 2  
 H.C. CORDES WEATHER CLOUDY COUNTY OTTAWA  
 R.C. BROWN TEMP. 80°F TOWNSHIP CARROLL  
 \_\_\_\_\_ SECTION 24  
 \_\_\_\_\_ T 7 N R 15 E

TYPE MONUMENT PK/WASHER  
 ON SURFACE - ~~BELOW~~ ON  
 LEFT - ☉ PAV'T - RIGHT ON  
12' TO RT EDGE PAVEMENT  
 S.L.M. 704+17.79

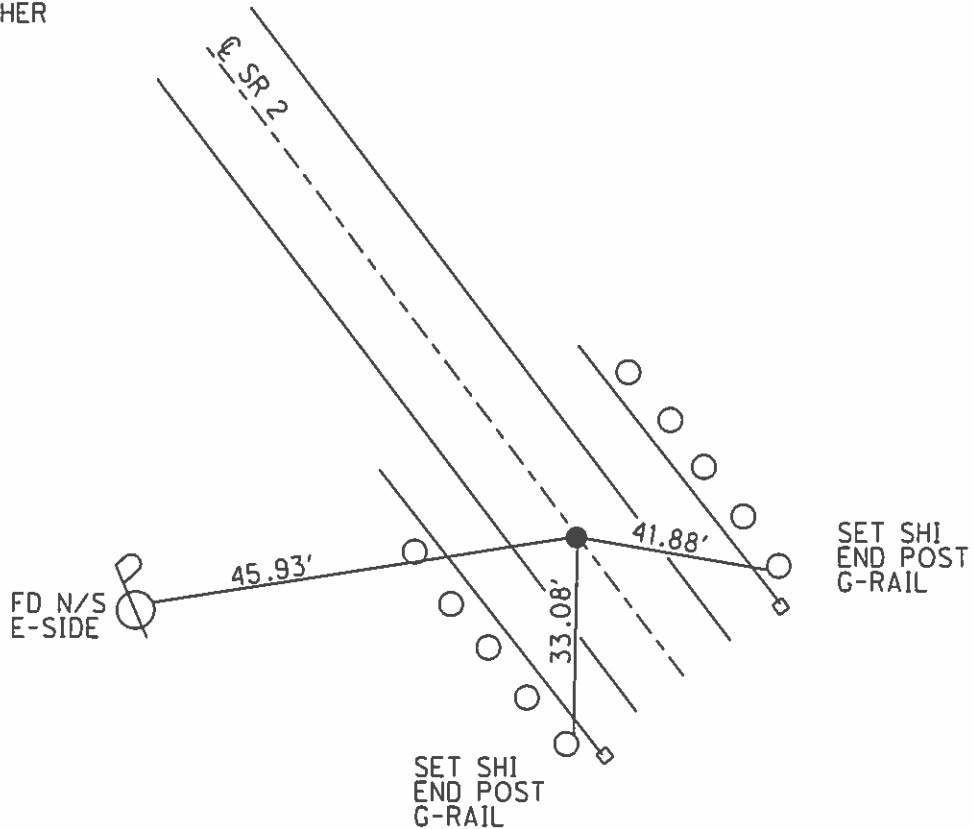


Grid: Northing: 688805.3775 Easting: 1812621.9810

RECORD 3-21-1980  
 S.T.-STA 703+84  
 SET PK NAIL (9-5-80)  
 ATOP CONC. MON W/ IRODIN CTR.  
 704+19.00 BK R/W  
 704+16.00 AHD R/W

RESET PK.WASHER  
 8-2-00, BVD

GPS, REF34  
 4-10-15



# O.D.O.T. DISTRICT 2 SURVEY OFFICE

PERSONNEL

REFERENCE NO. 34

SHEET 11 OF 15

NOTES VAN DUSEN

H.C. CORDES

DATE 6-1-00

ROUTE SR2

R.C. BROWN

WEATHER SUNNY

COUNTY OTTAWA

TEMP. +80°F

TOWNSHIP CARROLL

SECTION 24

T2 NR 15 E

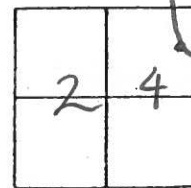
TYPE MONUMENT PK/WASHER

ON SURFACE - BELOW ON

LEFT - & PAV'T. - RIGHT ON

12' JORT EDGE PAVEMENT

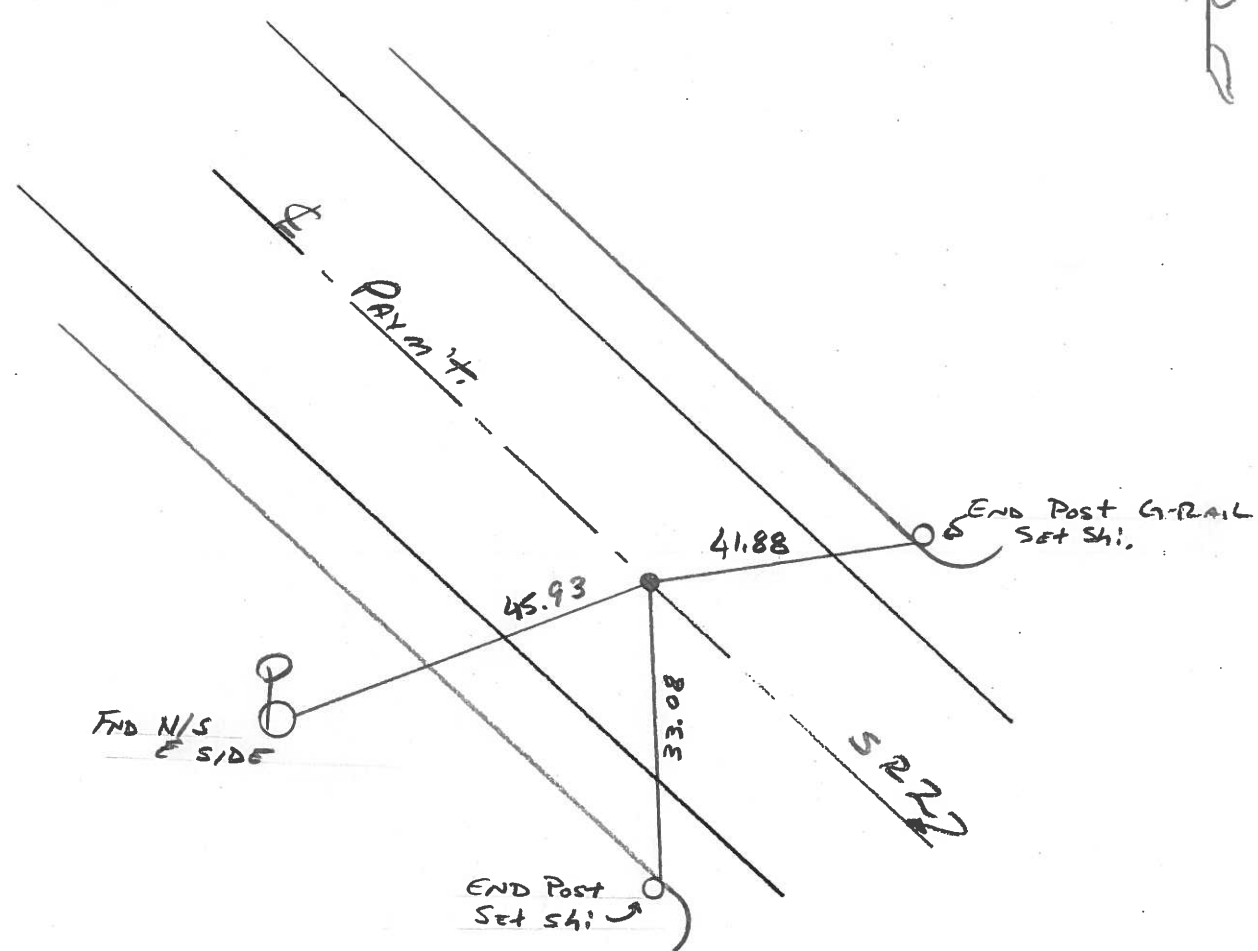
S.L.M. \_\_\_\_\_



RECORD: 3-21-1980

(RESET PK/WASHER  
 8-2-00  
 BYD

S.T. - STA 703+84  
 SET PK NAIL (9-5-80)  
 ATOP CONC MON W/ I-ROD IN CTR.  
 704+19.00 BK = 2 R/W  
 704+16.00 AHD 5



# O.D.O.T. DISTRICT 2 SURVEY OFFICE

PERSONNEL

REFERENCE NO. 34

SHEET 10 OF 13

NOTES CHENEY

H.C. RIPPLE

R.C. BARBOUR

GEYMAN

DATE 4-21-1993

WEATHER Mostly Cloudy

TEMP. 35°

ROUTE #2

COUNTY OTTAWA

TOWNSHIP CARROLL

SECTION 24

T7N R15E

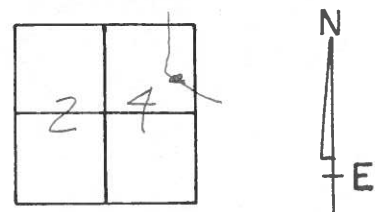
TYPE MONUMENT PK/WASHER

ON SURFACE - BELOW ON

~~LEFT~~ - PAV'T. - RIGHT ON

12' TO Rt. EDGE PAVEMENT

S.L.M. 704+13



RECORD: 3-21-1980

S.T.

STA. 703+84

SET P.K. NAIL (9-5-80)

ATOP CONC. MON WITH

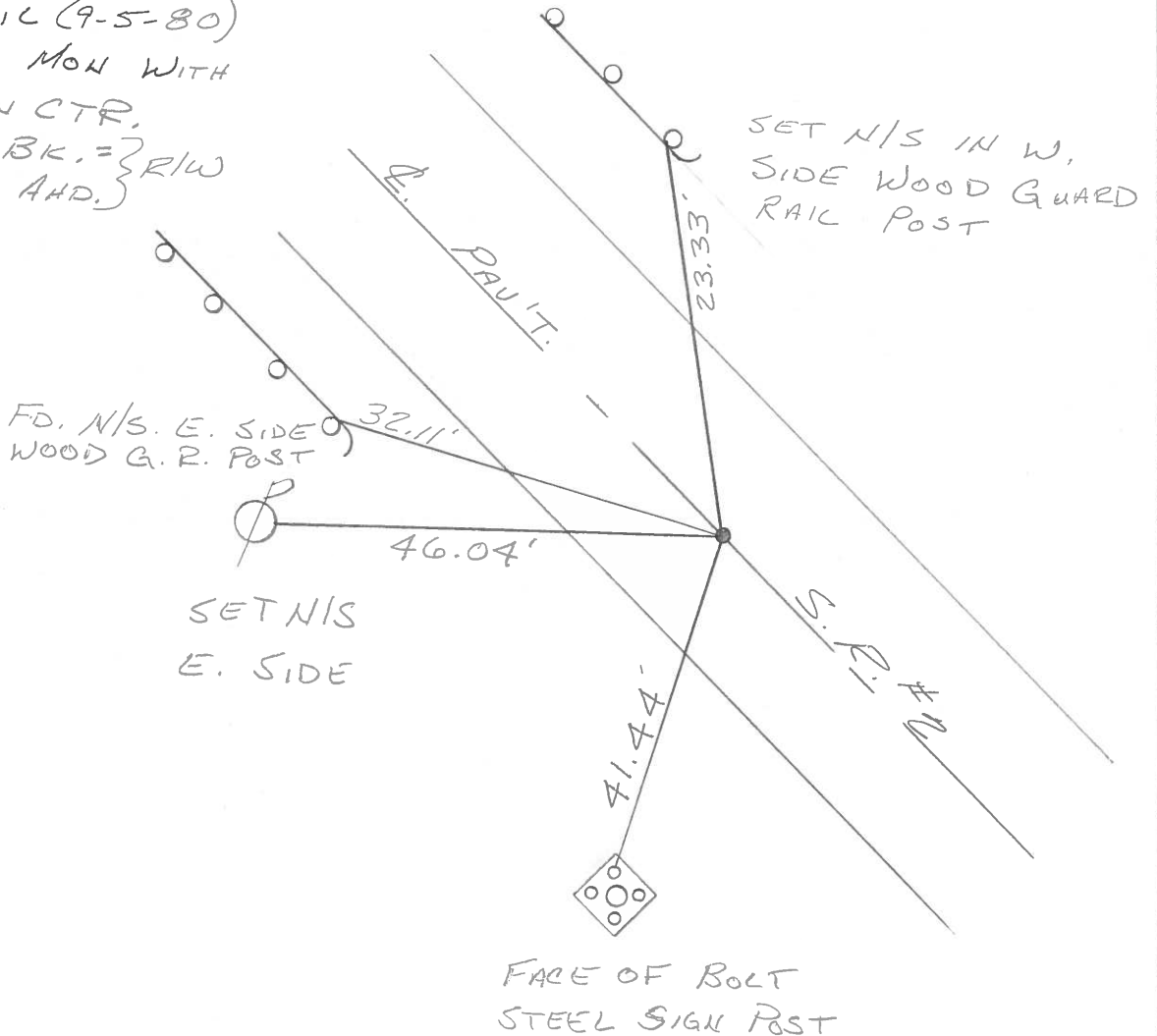
IRON ROD IN CTR.

704+19.00 BK. = } RIW

704+16.00 AHD. }

SET PK/WASHER  
6-14-1993  
RCC

SET NIS IN W,  
SIDE WOOD GUARD  
RAIL POST



Q.D.O.T. DISTRICT 2 SURVEY OFFICE

Sht.      of     

County Ottawa S.R. #2

Date 3-21-80

Township Carroll

Weather Fair

Section 24

Temp. 42°

T2N, R15E

Personnel Schneider

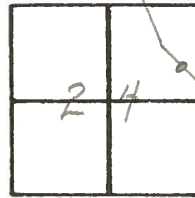
Mosser

Barbour

Ripple

Geyman

34

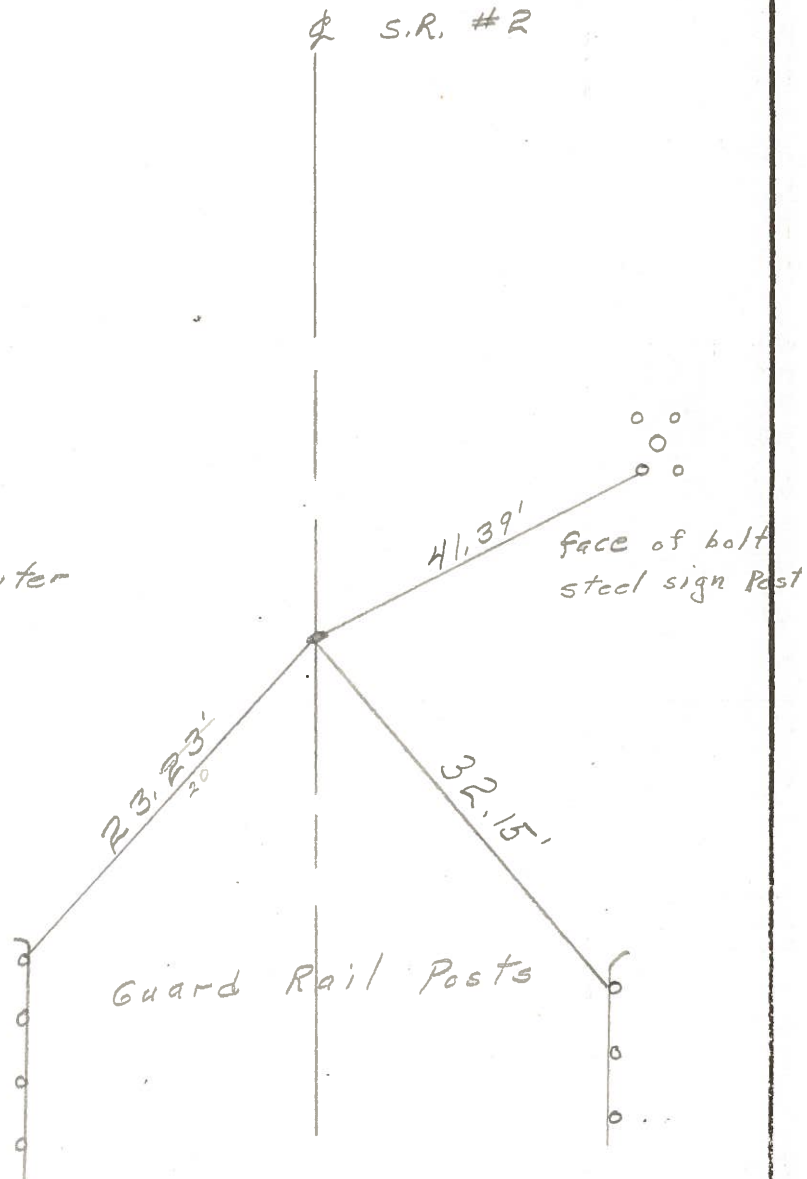


S.T. 703+84 S.L.M.  
 Conc. Mon. with I.P. in center

704+19.00 Bk. =  
 704+16.00 Ahd. R/W

Reset P.K. Nail

8-5-80



PERSONNEL TITLE PERSONNEL TITLE

COUNTY Ottawa

DATE 11-7-74  
7-29-74

S. R. 2

WEATHER Sunny

SEC. Ott-2-13.07 B-

TEMP. 80°

DESCRIPTION

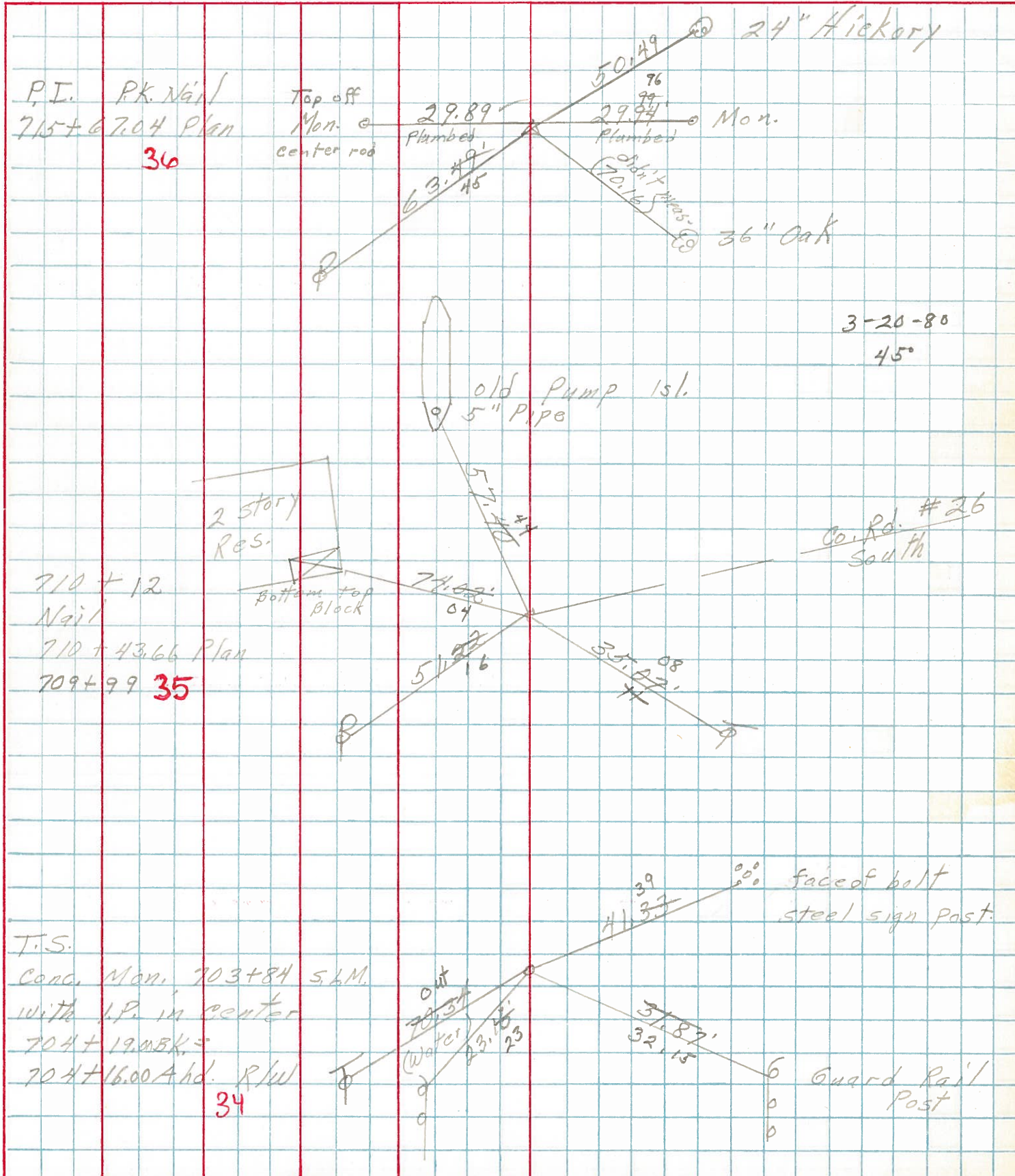
Erie Tap

JOB NO. \_\_\_\_\_

LEFT

CENTER LINE

RIGHT





PERSONNEL TITLE PERSONNEL TITLE

COUNTY Ottawa DATE Apr. 28, '64

S. R. #2-Rusha Creek WEATHER Clear

SEC Ott. 2-13.07 (Br.) TEMP. 70°

I-801763  
JOB NO. 02451

DESCRIPTION Control Points + Ties

LEFT

CENTER LINE

RIGHT

(All Measurements Plum-Line)

8/26/64  
Set P.K. For  
MOT. Point

S.T. 704+19.00 BK - Const. + Sur. =

704+~~16.00~~ Hhd. + R/W

P.K. Nail

8/27/64  
Set R.R. S.P.K.

P.I. Spiral - D's. Sur. + Const.

P.K. Nail

8/27/64  
Set I.P.

P.I. 699+74.49 R/W

P.K. Nail

