

O.D.O.T. DISTRICT 2 SURVEY OFFICE (USE ONLY)

PERSONNEL

REFERENCE NO. 35

SHEET 19 OF 25

NOTES RHOADES

DATE 9-8-20

ROUTE SR 2

H.C. O'DONNELL

WEATHER CLOUDY

COUNTY OTTAWA

R.C. AUBLE

TEMP. 70°

TOWNSHIP CARROLL

SECTION 24

DWG BY NIESE

PID 107060

T 7 N R 15 E

TYPE MONUMENT MAG/WASHER

ON SURFACE - ~~BELOW~~ ON

OFFSET Q PAVEMENT ON LT : RT

12.0' TO LT EDGE PAVEMENT

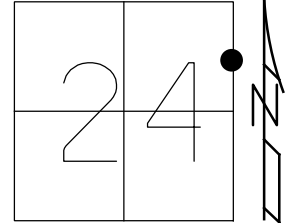
STATION: 705+93.60

HORZ. DATUM: NAD83(2011)

GEOID: 2012A

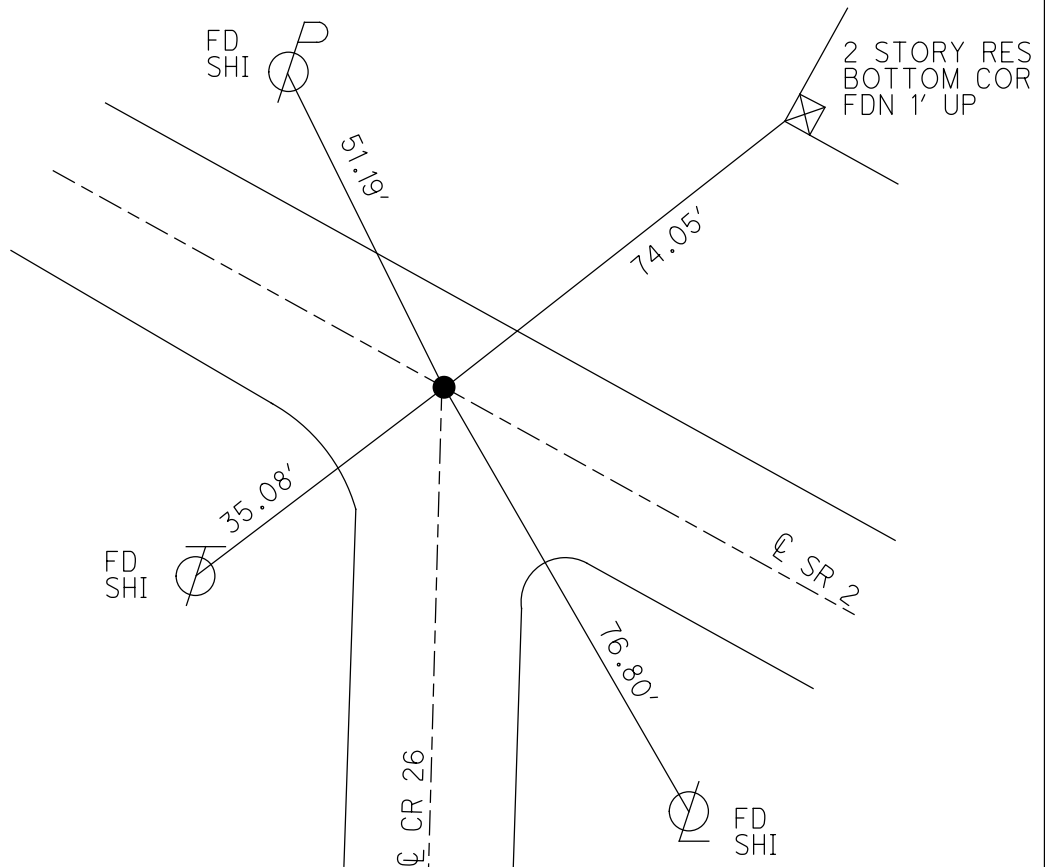
GRID: NORTHING: 688442.874

EASTING: 1813135.397



RECORD:

- STA. 710+12
- 3/21/80
- SET P.K.NAIL
- ATOP P.K.NAIL
- 9/5/80
- SET P.K.NAIL
- 6/14/93
- SET P.K./WASHER
- 8/2/00, BVD
- SET MAG/WASHER
- REF35
- 4/13/15, JFO
- FD MAG/WASHER
- REF35
- 4/1/19, JFO
- SET MAG/WASHER
- 5-11-23, DSA



O.D.O.T. DISTRICT 2 SURVEY OFFICE (USE ONLY)

PERSONNEL

REFERENCE NO. 35

SHEET 19 OF 25

NOTES VAN DUSEN

DATE 6/1/00

ROUTE SR 2

H.C. CORDES

WEATHER CLOUDY

COUNTY OTTAWA

R.C. BROWN

TEMP. 80°

TOWNSHIP CARROLL

SECTION 24

DWG BY NIESE

PID 107060

T 7 N R 15 E

TYPE MONUMENT P.K./WASHER

ON SURFACE - ~~BELOW~~ ON

OFFSET Q PAVEMENT ON LT : RT

12.0' TO LT EDGE PAVEMENT

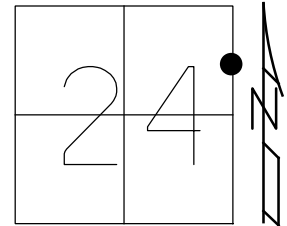
STATION: 705+93.60

HORIZ.DATUM: NAD83(2011)

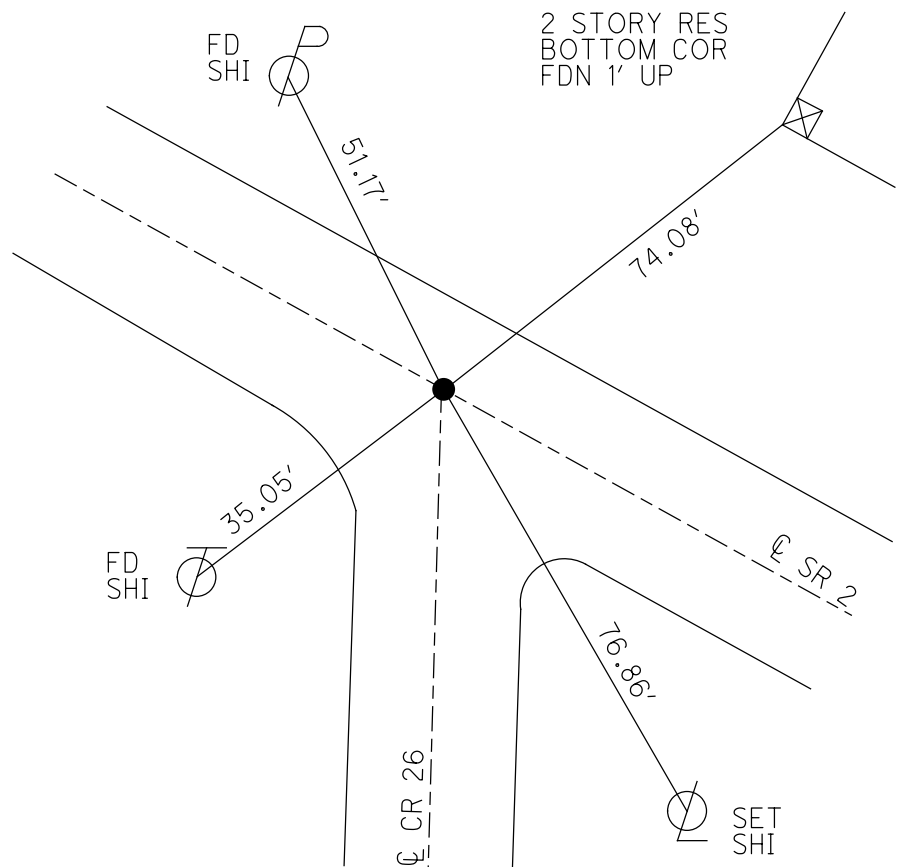
GEOID: 2012A

GRID: NORTHING: 688442.874

EASTING: 1813135.397



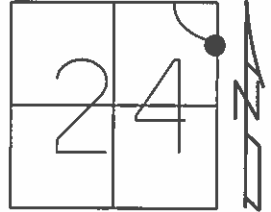
RECORD:
 STA. 710+12
 3/21/80
 SET P.K.NAIL
 ATOP P.K.NAIL
 9/5/80
 SET P.K.NAIL
 6/14/93
 SET P.K./WASHER
 8/2/00, BVD
 SET MAG/WASHER
 REF35
 4/13/15, JFO
 FD MAG/WASHER
 REF35
 4/1/19, JFO



O.D.O.T. DISTRICT 2 SURVEY OFFICE (USE ONLY)

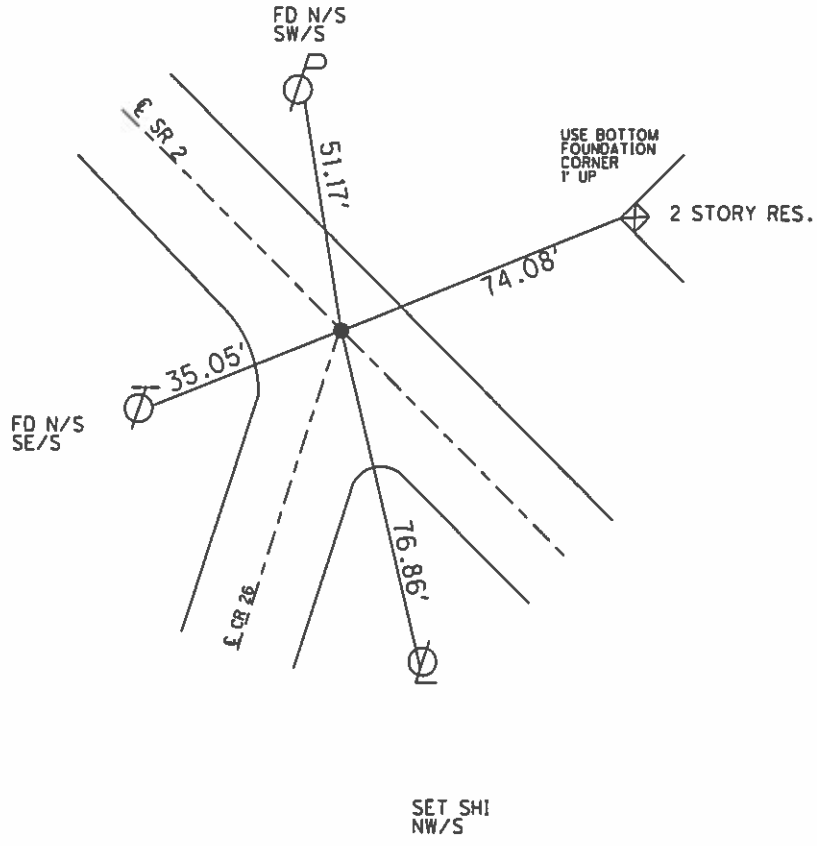
PERSONNEL _____ REFERENCE NO. 35 SHEET 12 OF 15
 NOTES VAN DUSEN DATE 6-1-00 ROUTE SR 2
 H.C. CORDES WEATHER CLOUDY COUNTY OTTAWA
 R.C. BROWN TEMP. 80°F TOWNSHIP CARROLL
 SECTION 24
 T 7 N R 15 E

TYPE MONUMENT PK/WASHER
 ON SURFACE - ~~BELOW~~ ON
 LEFT - ☉ PAV'T - RIGHT ON
12' TO LT EDGE PAVEMENT
 S.L.M. 710+43.80



Grid: Northing: 688442.8735 Easting: 1813135.3970

RECORD
 STA. 710+12
 3-21-80
 SET PK. NAIL
 ATOP PK. NAIL
 710+43.66 (PLAN)
 709.99
 9-5-80
 SET PK
 6-14-1993
 RESET PK/WASHER
 8-2-2000, BVD
 SET MAG/WASHER
 GPS, REF35
 4-13-15, JFO



O.D.O.T. DISTRICT 2 SURVEY OFFICE

PERSONNEL

REFERENCE NO. 35

SHEET 12 OF 15

NOTES VANDUSEN

H.C. CORDES

DATE 6-1-2000

ROUTE 2

R.C. BROWN

WEATHER SUNNY

COUNTY OTTAWA

TEMP. +80°F

TOWNSHIP Carroll

SECTION 24

T 7 N R 15 E

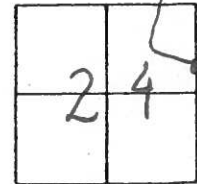
TYPE MONUMENT P.K. GONE - TIES ARE GOOD

ON SURFACE - BELOW _____

LEFT- & PAV'T. - RIGHT ON

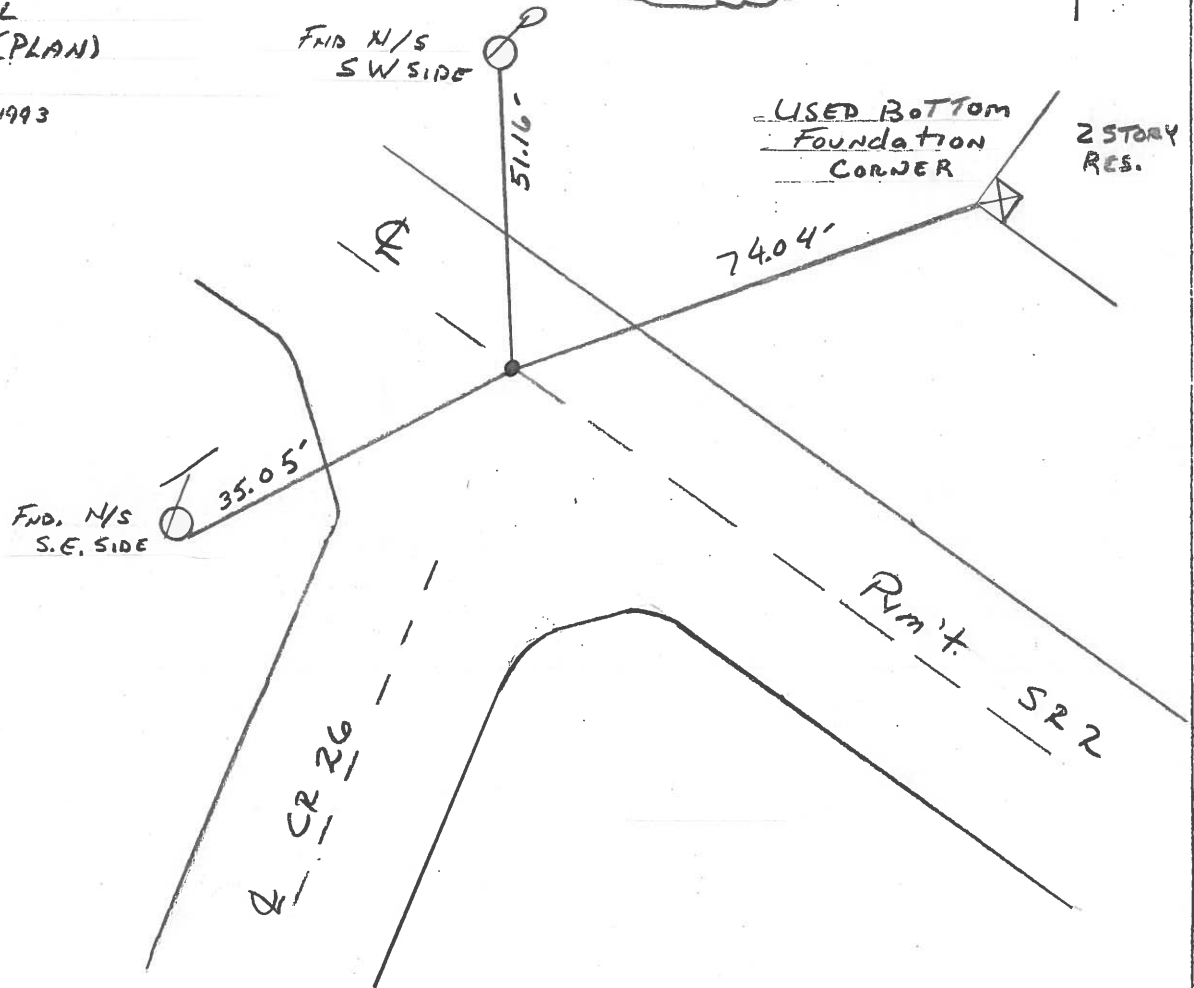
12' TO LT EDGE PAVEMENT

S.L.M. 710+43



RECORD : 3-21-80
 Sta. 710+12
 SET PK. NAIL (9-5-80)
 ATOP PK NAIL
 710+43.66 (PLAN)
 709+99
 NOTE, PK SET 6-14-1993

(RESET PK/WASHER
 8-2-2000
 BYD)



O.D.O.T. DISTRICT 2 SURVEY OFFICE

PERSONNEL

REFERENCE NO. 35

SHEET 11 OF 13

NOTES CHENEY

H.C. RIPPLE

DATE 4-21-1993

ROUTE #2

R.C. BARBOUR

WEATHER Mostly Cloudy

COUNTY OTAWA

GEYMAN

TEMP. 35°

TOWNSHIP CARROLL

SECTION 24

T7 N R 15 E

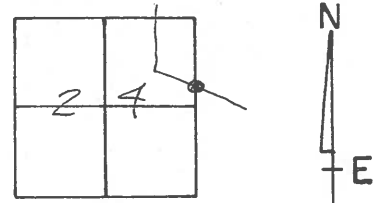
TYPE MONUMENT P.K. GONE - TIES ARE GOOD

ON SURFACE - BELOW _____

~~LEFT~~ - C PAV'T. - RIGHT ON

12' TO LT EDGE PAVEMENT

S.L.M. 710 + 43



RECORD: 3-21-80

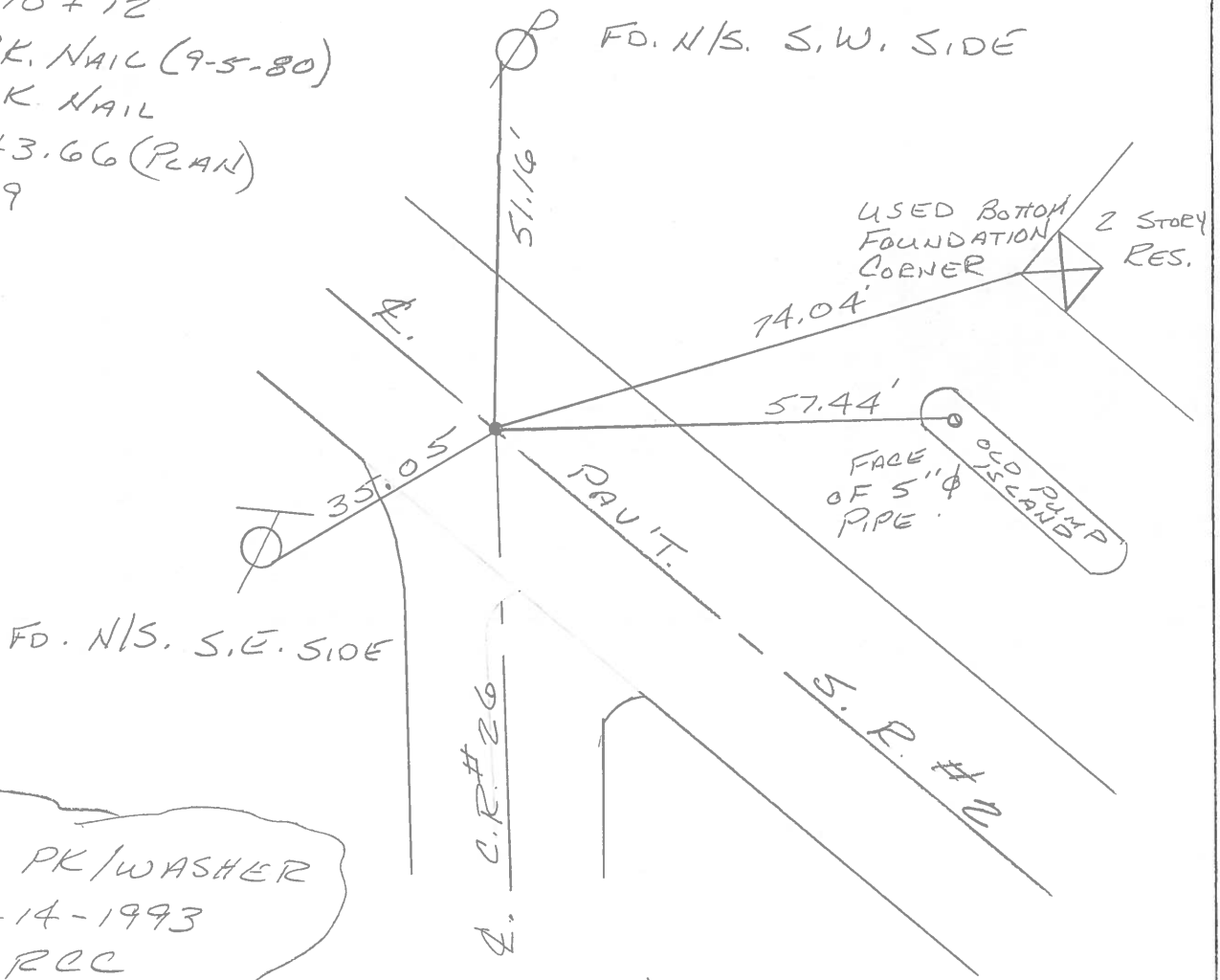
STA. 710 + 12

SET P.K. NAIL (9-5-80)

ATOP P.K. NAIL

710 + 43.66 (PLAN)

709 + 99



SET PK/WASHER
 6-14-1993
 RCC

Q.D.O.T. DISTRICT 2 SURVEY OFFICE

Sht. ___ of ___

County Ottawa S.R. # 2

Date 3-21-80

Township Carroll

Weather Fair

Section 24

Temp. 45°

T 2 N, R 15 E

Personnel Schneider

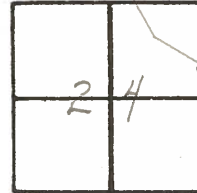
Mosser

Barbour

Ripple

Geyman

35



2 story Res.

Bottom top block

old pump isl.
5" pipe

SR. # 2

Co. Rd. # 26

74.04'

57.44'

51.16'

35.08'
05

710 + 12

P.K. Nail

710 + 43.66 Plan

709 + 99

Reset P.K. Nail

8-5-80

PERSONNEL TITLE PERSONNEL TITLE

COUNTY Ottawa

DATE 11-7-74
7-29-74

S. R. 2

WEATHER Sunny

SEC. 04-2-13.07 B.

TEMP. 80°

DESCRIPTION

Erie Twp

JOB NO. _____

LEFT

CENTER LINE

RIGHT

