

O.D.O.T. DISTRICT 2 SURVEY OFFICE (USE ONLY)

PERSONNEL _____

REFERENCE NO. 36

SHEET 20 OF 25

NOTES VAN DUSEN

DATE 6/1/00

ROUTE SR 2

H.C. CORDES

WEATHER SUNNY

COUNTY OTTAWA

R.C. BROWN

TEMP. 80°

TOWNSHIP ERIE

DWG BY NIESE

PID 107060

SECTION 19

T 7 N R 16 E

TYPE MONUMENT P.K./WASHER

ON SURFACE - ~~BELOW~~ ON

OFFSET 0 PAVEMENT ON LT : RT

12.0' TO RT EDGE PAVEMENT

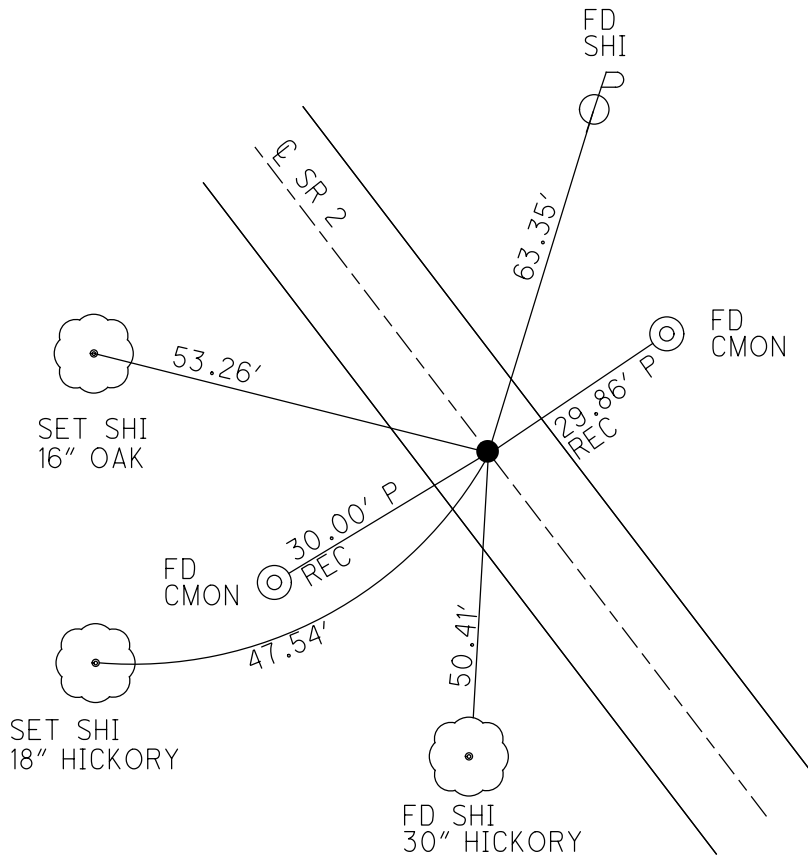
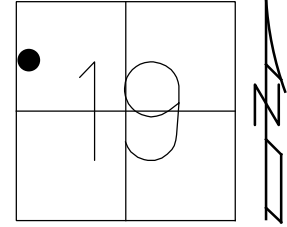
STATION: 711+16.09

HORZ.DATUM: NAD83(2011)

GEOID: 2012A

GRID: NORTHING: 688141.643

EASTING: 1813562.317

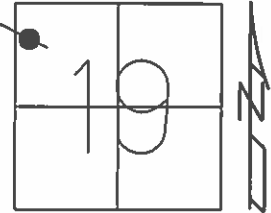


RECORD: P.I.
 STA 715+67.04
 3/21/80
 SET P.K.NAIL
 ATOP P.K.NAIL
 9/5/80
 SET P.K./WASHER
 8/20/00, BVD
 SET MAG/WASHER
 REF36
 4/13/15, JFO
 FD MAG/WASHER
 REF36
 4/1/19, JFO
 SET MAG/WASHER
 5-11-23, DSA

O.D.O.T. DISTRICT 2 SURVEY OFFICE (USE ONLY)

PERSONNEL _____ REFERENCE NO. 36 SHEET 13 OF 15
 NOTES VAN DUSEN DATE 6-1-2000 ROUTE SR 2
 H.C. CORDES WEATHER SUNNY COUNTY OTTAWA
 R.C. BROWN TEMP. 80°F TOWNSHIP ERIE
 _____ SECTION 19
 _____ T 7 N R 16 E

TYPE MONUMENT PK/WASHER
 ON SURFACE - ~~BELOW~~ ON
 LEFT - ☉ PAV'T - RIGHT ON
12' TO RT EDGE PAVEMENT
 S.L.M. 715+66.29

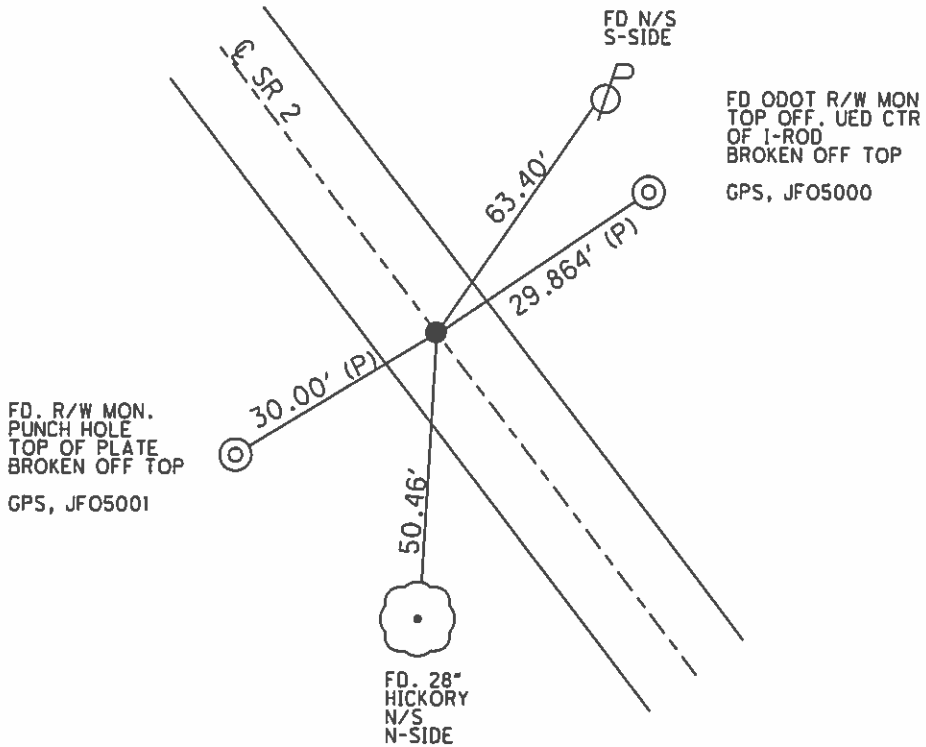


Grid: Northing: 688141.6434 Easting: 1813562.3170

RECORD 3-21-1980
 P.L.
 SET PK. NAIL (9-5-80)
 ATOP PK. NAIL
 STA. 715+67.04 (PLAN)

RESET PK/WASHER
 8-20-2000, BVD

SET MAG/WASHER
 GPS, REF36
 4-13-15, JFO



O.D.O.T. DISTRICT 2 SURVEY OFFICE

PERSONNEL

REFERENCE NO. 36

SHEET 13 OF 15

NOTES VAN DUSEN

H.C. CORDES

DATE 6-1-2000

ROUTE 2

R.C. BROWN

WEATHER SUNNY

COUNTY OTTAWA

TEMP. +80°F

TOWNSHIP ERIE

SECTION 19

T. 7 N R. 16 E

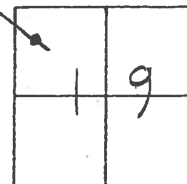
TYPE MONUMENT PK/WASHER

~~ON SURFACE~~ - BELOW ON

~~LEFT - & PAV'T. - RIGHT~~ ON

12' TO RT. EDGE PAVEMENT

S.L.M. 715+67



RECORD: 3-21-1980

P.I.

SET P.K. NAIL (9-5-80)

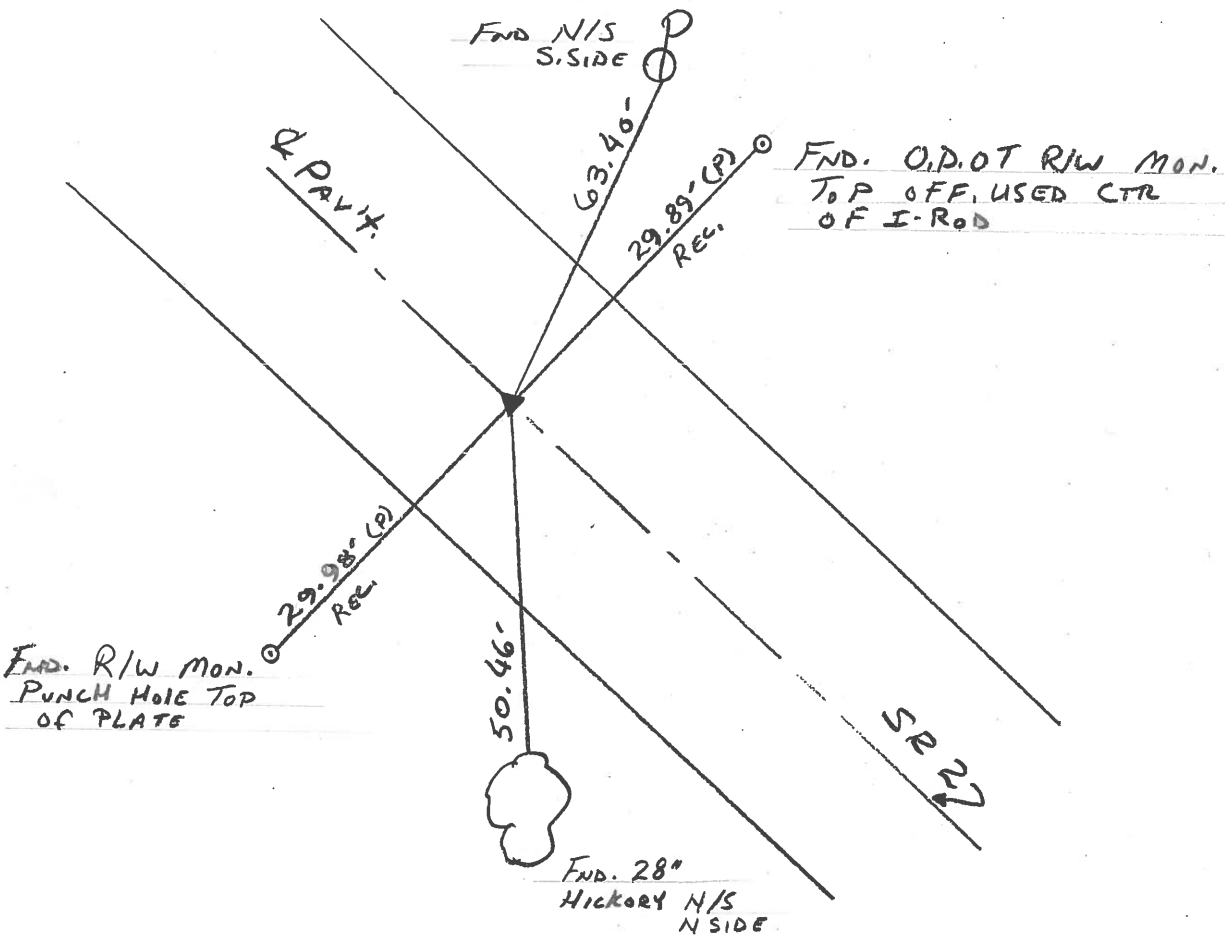
ATOP P.K. NAIL

STA. 715+67.04 (PLAN)

RESET PK/WASHER

8-20-2000

B.V.D



O.D.O.T. DISTRICT 2 SURVEY OFFICE

PERSONNEL

REFERENCE NO. 36

SHEET 12 OF 13

NOTES CHENEY

H.C. RIPPLE

R.C. BARBOUR

GEYMAN

DATE 4-21-93

WEATHER Mostly Cloudy

TEMP. 35°

ROUTE #2

COUNTY OTTAWA

TOWNSHIP ERIE

SECTION 19

T. N R. 16 E

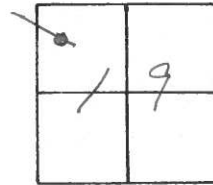
TYPE MONUMENT PK/WASHER

ON SURFACE - BELOW ON

~~LEFT~~ - Q PAV'T. - ~~RIGHT~~ ON

12' TO FT. EDGE PAVEMENT

S.L.M. 715+67



RECORD: 3-21-1980

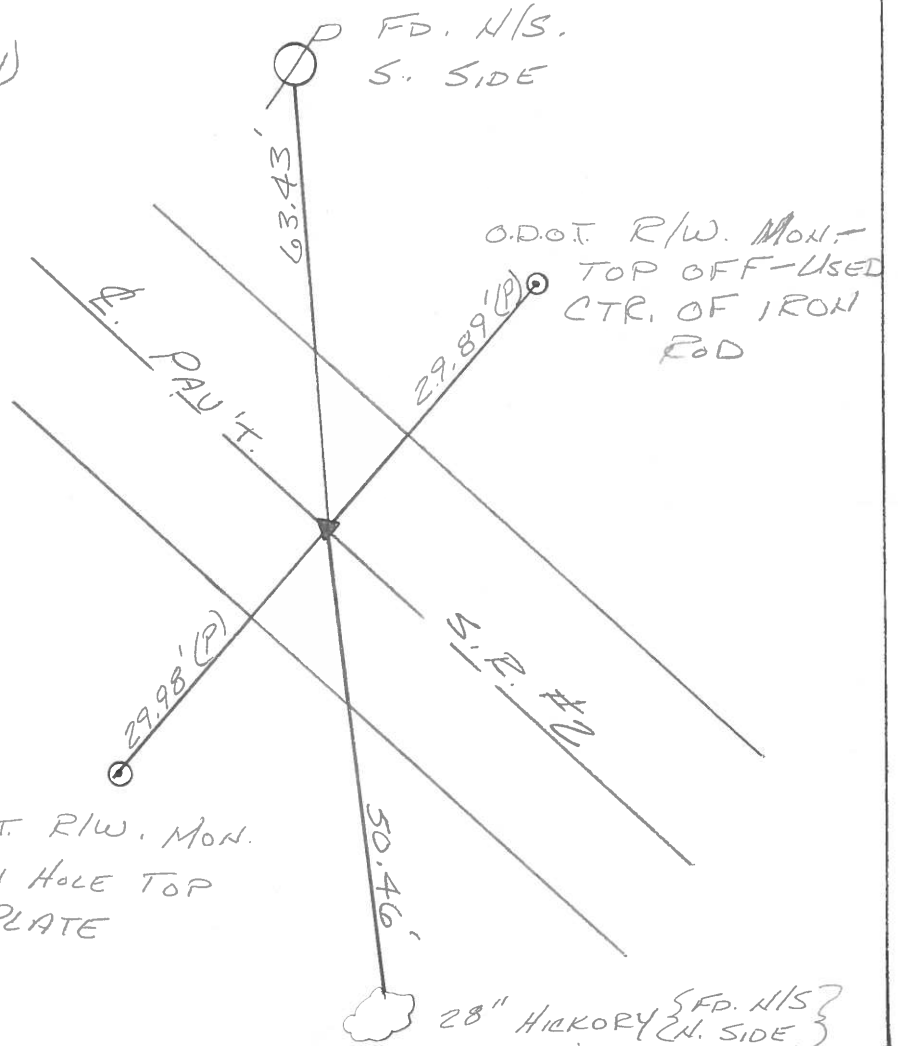
P.I.

SET P.K. NAIL (9-5-80)

ATOP P.K. NAIL

STA. 715+67.04 (PLAN)

SET PK/WASHER
 6-14-1993
 RCC



O.D.O.T. R/W. MON.
 PUNCH HOLE TOP
 OF PLATE

28" HICKORY (FD. N/S?)
 (N. SIDE)

Q.D.O.T. DISTRICT 2 SURVEY OFFICE

Sht. ___ of ___

County Ottawa S.R. # 2

Date 3-21-80

Township Erie

Weather Fair

Section _____

Temp. 45°

T 7 N, R 16 E

Personnel Schneider

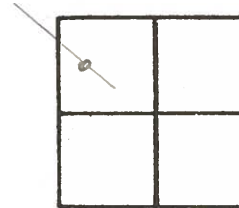
Mosser

Barbour

Ripple

Geyman

36



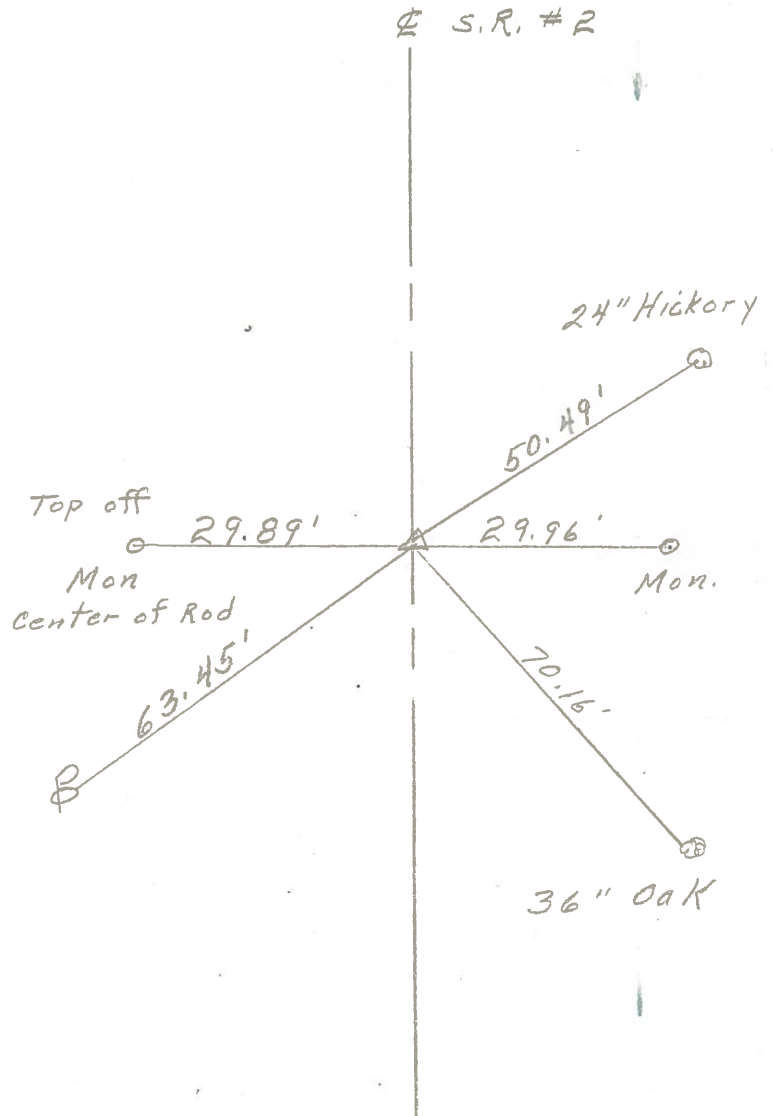
P. I.

P. K. Nail

715 + 67.04 Plan

Reset. P. K. Nail

9-5-80



PERSONNEL TITLE PERSONNEL TITLE

COUNTY Ottawa DATE 11-7-74
7-29-74

S. R. R WEATHER Sunny

SEC. 011-2-13.07 Br. TEMP. 80°

DESCRIPTION Erie Tap LEFT CENTER LINE RIGHT JOB NO.

