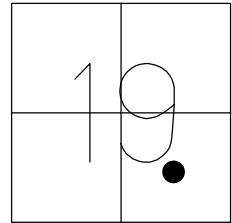


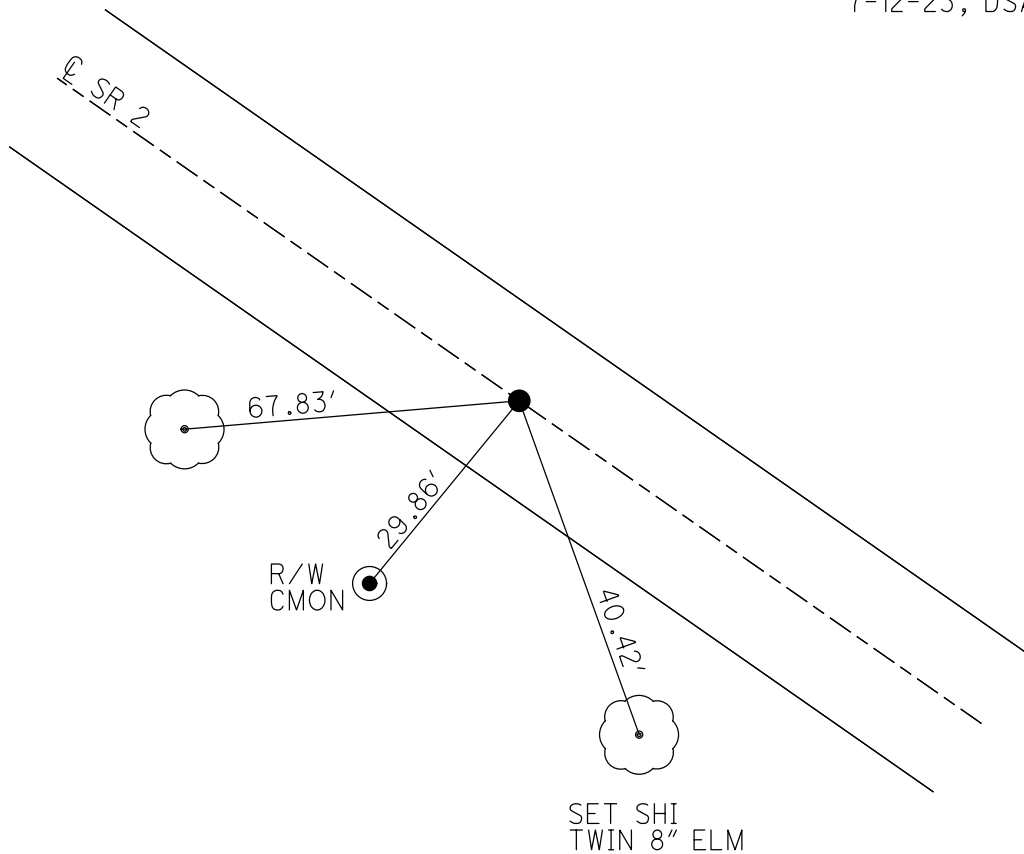
O.D.O.T. DISTRICT 2 SURVEY OFFICE (USE ONLY)

PERSONNEL _____ REFERENCE NO. 36 A SHEET 21 OF 25
 NOTES CORDES DATE 9/16/98 ROUTE SR 2
 H.C. LOEHRKE WEATHER SUN COUNTY OTTAWA
 R.C. CORDES TEMP. 75° TOWNSHIP ERIE
 DWG BY NIESE PID 107060 SECTION 19
 T 7 N R 14 E

TYPE MONUMENT P.K./WASHER
 ON SURFACE - ~~BELOW~~ ON
 OFFSET Q PAVEMENT ON LT : RT
11.3' TO RT EDGE PAVEMENT
 STATION: 752+64
 HORZ.DATUM: - GEOID: -
 GRID: NORTHING: - EASTING: -



RECORD: P.O.T.
 PT 301
 ON Q R/W
 SET P.K./WASHER
 9/16/98, BC
 DID NOT SET
 7-12-23, DSA



O.D.O.T. DISTRICT 2 SURVEY OFFICE (USE ONLY)

PERSONNEL

REFERENCE NO. 36 A

SHEET 21 OF 25

NOTES CORDES DATE 9/16/98

H.C. LOEHRKE WEATHER SUN

R.C. CORDES TEMP. 75°

ROUTE SR 2

COUNTY OTTAWA

TOWNSHIP ERIE

SECTION 19

DWG BY NIESE PID 107060

T 7 N R 14 E

TYPE MONUMENT P.K./WASHER

ON SURFACE - ~~BELOW~~ ON

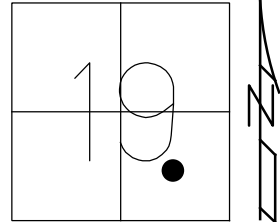
OFFSET 11.3' TO RT PAVEMENT ON ~~LT~~ : ~~RT~~

11.3' TO RT EDGE PAVEMENT

STATION: 752+64

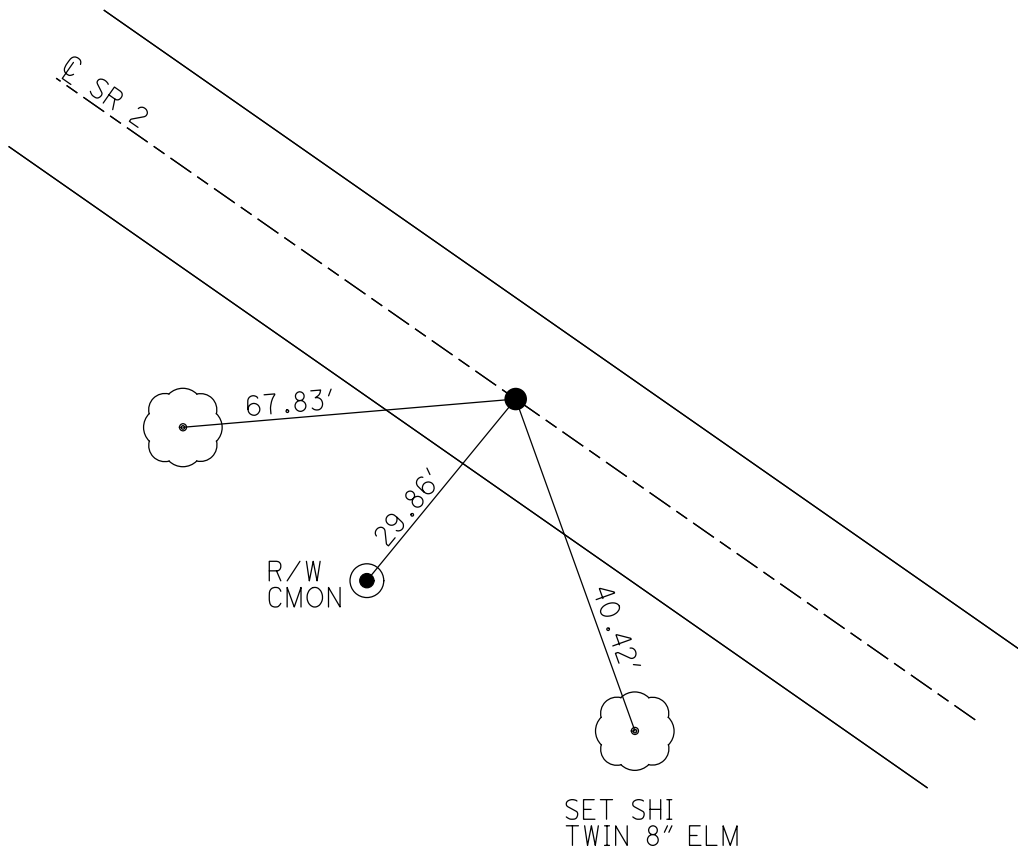
HORZ.DATUM: - GEOID: -

GRID: NORTHING: - EASTING: -



RECORD: P.O.T.
PT 301
ON 1/4 R/W
SET P.K./WASHER
9/16/98, BC

NOTE: SLM = 752+64



O.D.O.T. DISTRICT 2 SURVEY OFFICE

PERSONNEL

REFERENCE NO. 30-A

SHEET 14 OF 15

NOTES COZDES

H.C. LOENKKE

DATE 9-16-98

ROUTE 2

R.C. COZDES

WEATHER SUN

COUNTY OTTAWA

TEMP. 75°

TOWNSHIP ERIE

SECTION 19

T.M.R. 14E

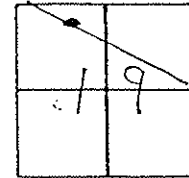
TYPE MONUMENT PK + WASHER

ON SURFACE YES

~~CONC~~ - ~~PAV'T.~~ YES

11.3 TO RT EDGE PAVEMENT

S.L.M. 22+940.44



P.O.T.
PT 301

NOTE POINT ON
& Z/M

SET PK
& WASHER
9-16-98
BC

