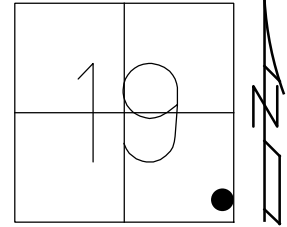


O.D.O.T. DISTRICT 2 SURVEY OFFICE (USE ONLY)

PERSONNEL _____ REFERENCE NO. 37 SHEET 22 OF 25
 NOTES VAN DUSEN DATE 6/1/00 ROUTE SR 2
 H.C. CORDES WEATHER SUNNY COUNTY OTTAWA
 R.C. BROWN TEMP. +80° TOWNSHIP ERIE
 DWG BY NIESE PID 107060 SECTION 19
 T 7 N R 14 E

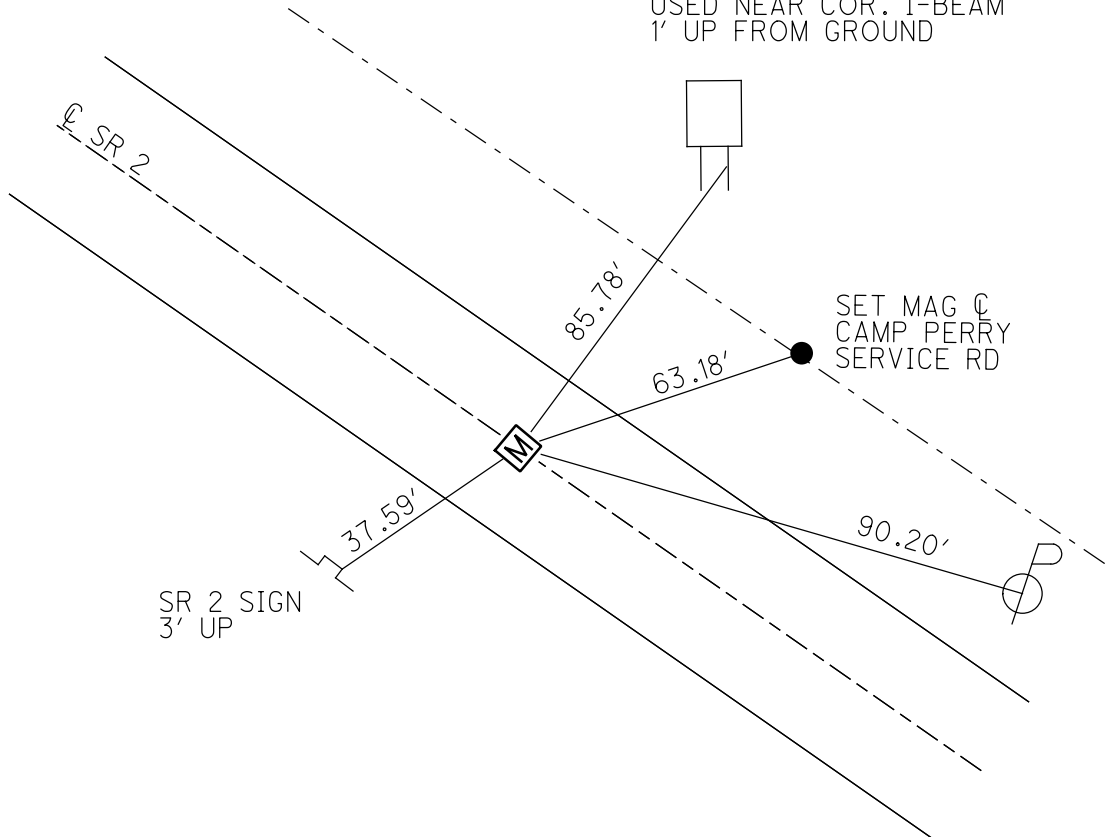
TYPE MONUMENT MONBOX
 ON SURFACE - ~~BELOW~~ ON
 OFFSET \varnothing PAVEMENT 2.0' \pm : RT
10.0' TO RT EDGE PAVEMENT
 STATION: 777+44 REC



HORZ.DATUM: - GEOID: -
 GRID: NORTHING: - EASTING: -

RECORD: P.I.
 SET P.K./WASHER
 6/14/93, RCC
 FD BY CONSULTANT'S
 SURVEY GROUP
 REPLACED BY MONBOX
 IN NEW CONST AREA

U.S.C.O. PUBLIC
 WAREHOUSE SIGN
 USED NEAR COR. I-BEAM
 1' UP FROM GROUND



O.D.O.T. DISTRICT 2 SURVEY OFFICE

PERSONNEL _____

REFERENCE NO. 37

SHEET 15 OF 15

NOTES VANDUSEN

H.C. CORDES

DATE 6-1-2006

ROUTE 2

R.C. Brown

WEATHER SUNNY

COUNTY OTTAWA

TEMP. +80°F

TOWNSHIP _____

SECTION _____

T _____ R _____

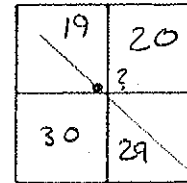
TYPE MONUMENT Mon. Box

~~ON SURFACE~~ - BELOW SURFACE

~~LEFT - & PAV'T.~~ - RIGHT 2'

10' TO RT EDGE PAVEMENT

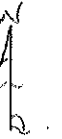
S.L.M. 777 +44



NOTE: THIS POINT WAS FOUND BY CONSULTANT'S SURVEY CREW (P.I??)

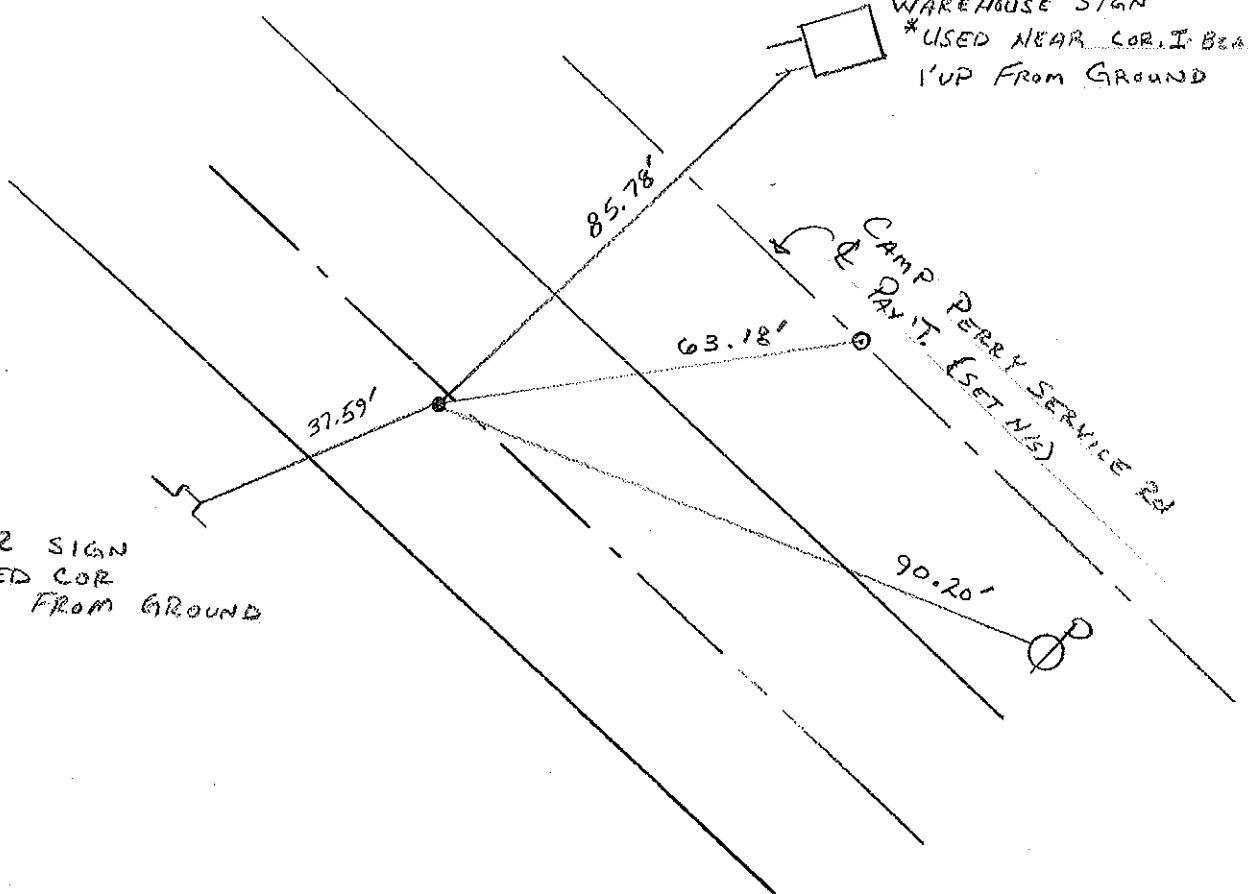
REPLACED BY Mon. Box IN NEW CONST. AREA

SET PK/WASHER
6-14-1993
RCC



U.S.D. PUBLIC WAREHOUSE SIGN
*USED NEAR COR. I BEAM
1' UP FROM GROUND

SRA2 SIGN
USED COR
3' UP FROM GROUND



O.D.O.T. DISTRICT 2 SURVEY OFFICE

PERSONNEL

REFERENCE NO. 37

SHEET 13 OF 13

NOTES CHENEY

H.C. RIPPLE

R.C. BARBOUR

GEYMAN

DATE 4-21-1993

WEATHER Mostly Cloudy

TEMP. 35°

ROUTE #2

COUNTY OTTAWA

TOWNSHIP ERIE

SECTION 19 OR 29

T 11 R 15 E

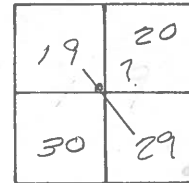
TYPE MONUMENT P.K. NAIL

~~ON~~ SURFACE - BELOW 2" ±

~~LEFT~~ - C PAV'T. - RIGHT 2'

10' TO RT EDGE PAVEMENT

S.L.M. 777+44



NOTE: THIS POINT WAS FOUND BY CONSULTANT'S SURVEY CREW. (P.I.?)

SET PK/WASHER
6-14-1993
REC

