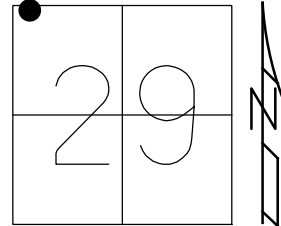


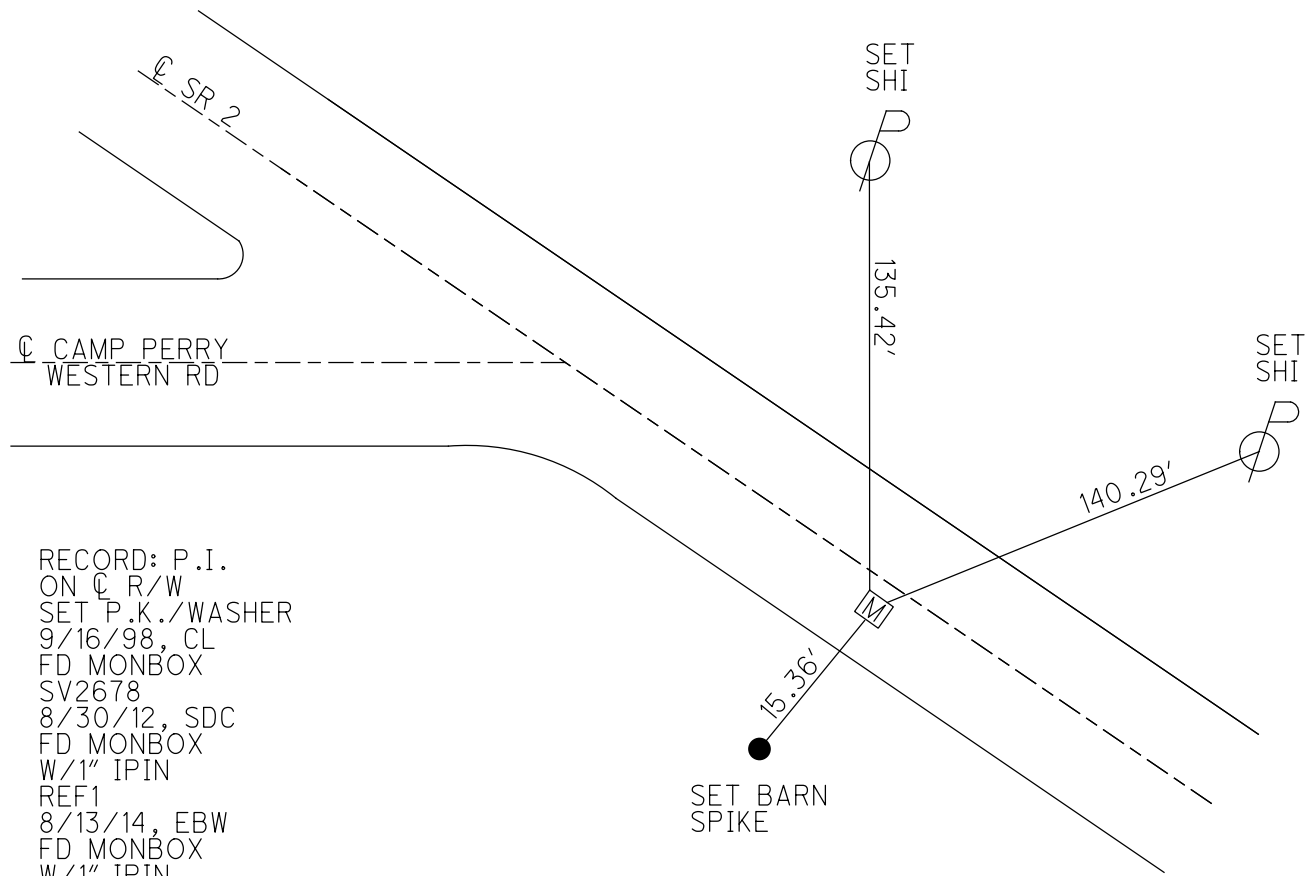
O.D.O.T. DISTRICT 2 SURVEY OFFICE (USE ONLY)

PERSONNEL \_\_\_\_\_ REFERENCE NO. 37 C SHEET 23 OF 25  
 NOTES RHOADES DATE 5-11-23 ROUTE SR 2  
 H.C. AUBLE WEATHER SUNNY COUNTY OTTAWA  
 R.C. NIESE TEMP. 72° TOWNSHIP ERIE  
           ASTON SECTION 29  
 DWG BY NIESE PID 107060 T 7 N R 14 E

TYPE MONUMENT MON BOX W/ 1" IPIN  
 ON SURFACE - ~~BELOW~~ ON  
 OFFSET ☐ PAVEMENT 3.3' ~~RT~~ : RT  
8.7' TO RT EDGE PAVEMENT  
 STATION: 772+73.92



HORIZ.DATUM: NAD83(2011) GEOID: 2012A  
 GRID: NORTHING: 684673.869 EASTING: 1818650.865



RECORD: P.I.  
 ON ☐ R/W  
 SET P.K./WASHER  
 9/16/98, CL  
 FD MONBOX  
 SV2678  
 8/30/12, SDC  
 FD MONBOX  
 W/1" IPIN  
 REF1  
 8/13/14, EBW  
 FD MONBOX  
 W/1" IPIN  
 REF36C  
 5-11-23, DSA

O.D.O.T. DISTRICT 2 SURVEY OFFICE (USE ONLY)

PERSONNEL

REFERENCE NO. 37 C

SHEET 23 OF 25

NOTES CORDES

DATE 9/16/98

ROUTE SR 2

H.C. LOEHRKE

WEATHER SUNNY

COUNTY OTTAWA

R.C. CORDES

TEMP. 75°

TOWNSHIP ERIE

DWG BY NIESE

PID 107060

SECTION 29

T 7 N R 14 E

TYPE MONUMENT P.K./WASHER

ON SURFACE - ~~BELOW~~ ON

OFFSET  $\text{C}$  PAVEMENT 3.3' ~~LT~~ : RT

8.7' TO RT EDGE PAVEMENT

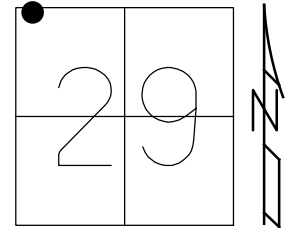
STATION: 772+73.92

HORIZ.DATUM: NAD83(2011)

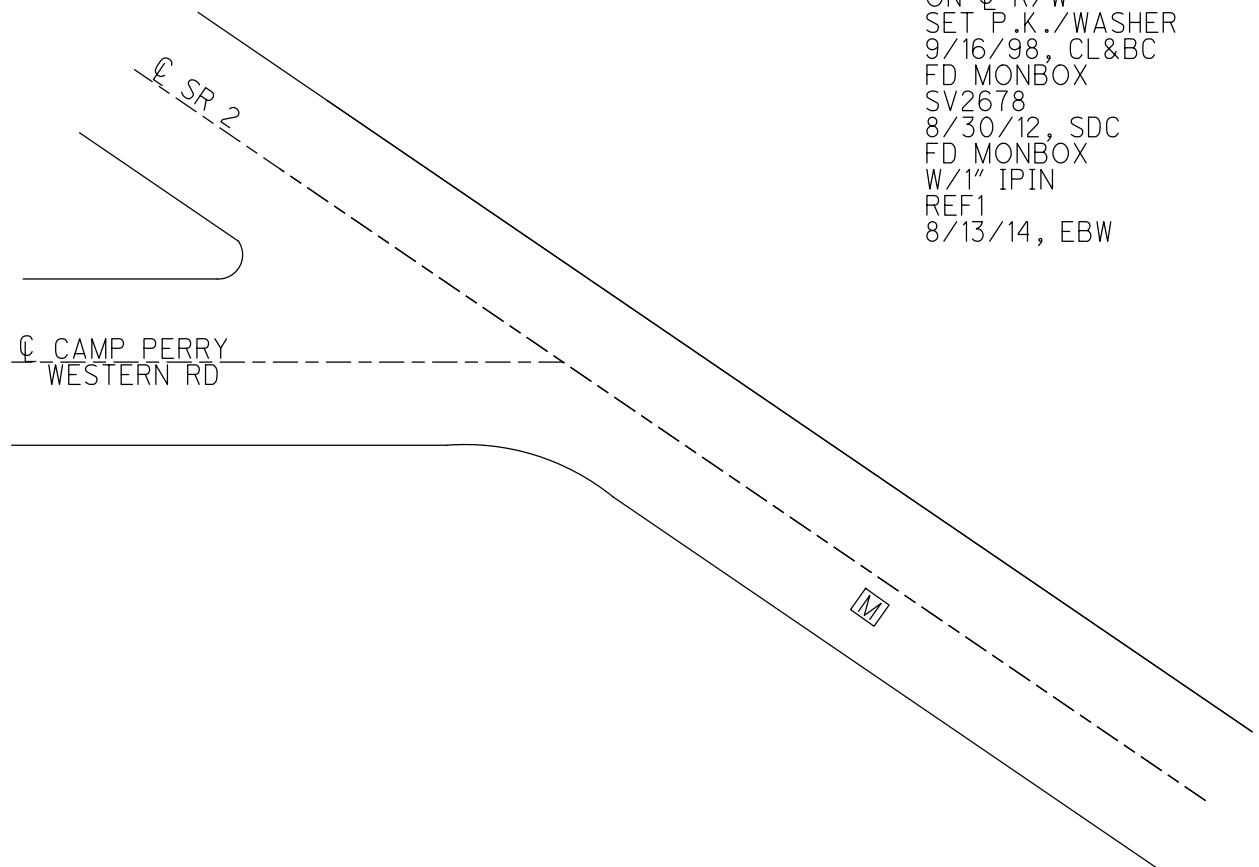
GEOID: 2012A

GRID: NORTHING: 684673.869

EASTING: 1818650.865



RECORD: P.I.  
ON  $\text{C}$  R/W  
SET P.K./WASHER  
9/16/98, CL&BC  
FD MONBOX  
SV2678  
8/30/12, SDC  
FD MONBOX  
W/1" IPIN  
REF1  
8/13/14, EBW



O.D.O.T. DISTRICT 2 SURVEY OFFICE (USE ONLY)

PERSONNEL \_\_\_\_\_ REFERENCE NO. 37 C SHEET 1 OF 3  
NOTES CORDES DATE 9/16/98 ROUTE SR 2  
H.C. LOEHRKE WEATHER SUNNY COUNTY OTTAWA  
R.C. CORDES TEMP. 75° TOWNSHIP ERIE  
SECTION 29  
T 7 N R 14 E

TYPE MONUMENT P.K./WASHER

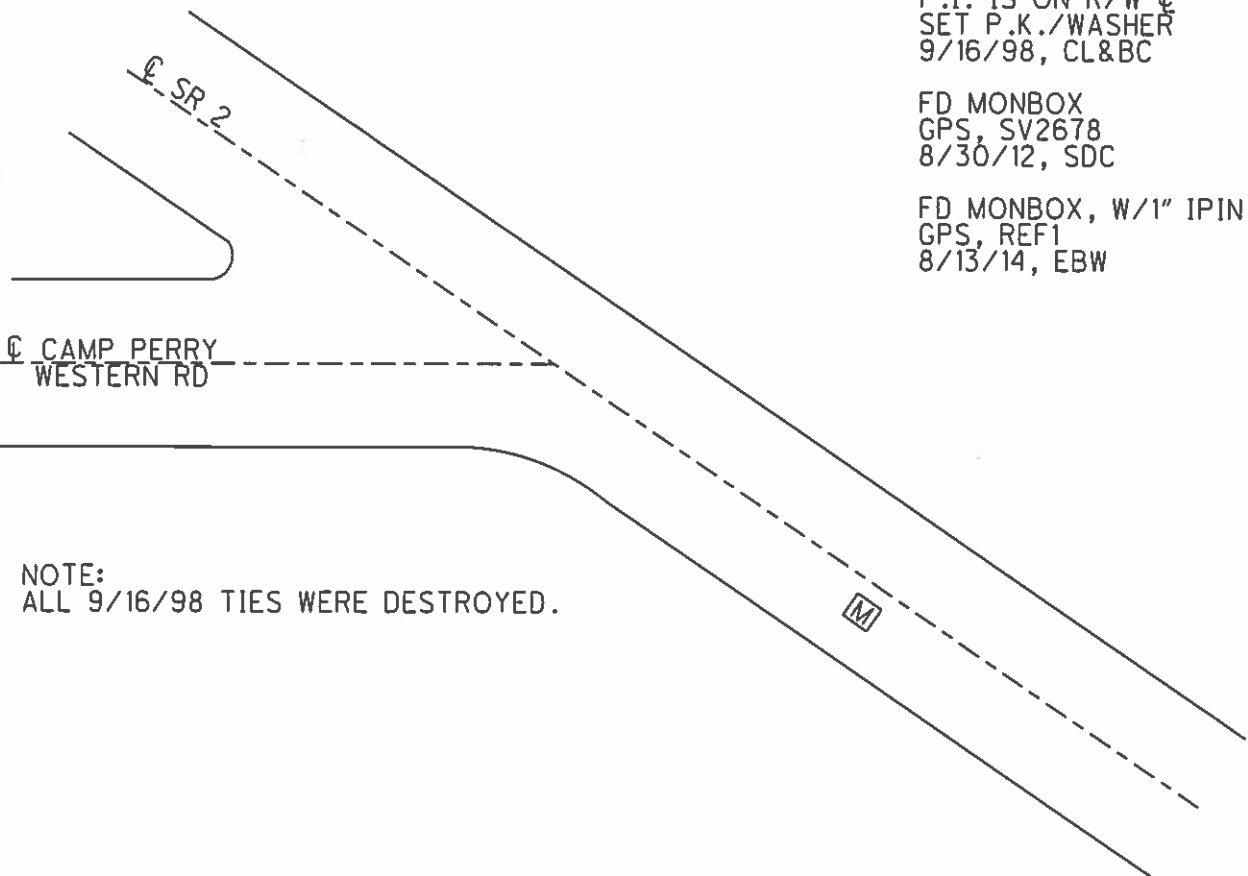
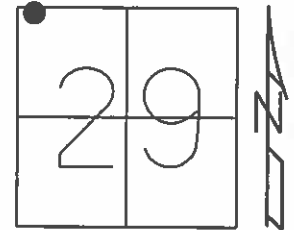
ON SURFACE - ~~BELOW~~ ON \_\_\_\_\_

~~LEFT~~ - CL PAV'T - RIGHT 3.3'

8.7' TO RT EDGE PAVEMENT

S.L.M. 772+70, 150'± SE. OF CAMP PERRY W. RD.

Grid: Northing: 684673.869 Easting: 1818650.865



RECORD: P.I.  
P.I. IS ON R/W CL  
SET P.K./WASHER  
9/16/98, CL&BC

FD MONBOX  
GPS, SV2678  
8/30/12, SDC

FD MONBOX, W/1" IPIN  
GPS, REF1  
8/13/14, EBW

NOTE:  
ALL 9/16/98 TIES WERE DESTROYED.

PERSONNEL	TITLE	PERSONNEL	TITLE	COUNTY	DATE
CRAIG LOEHRKE				OTT	10-8-99
TIM ROUSOS				S.R. 2	WEATHER CLOUDY
				SEC. 23, 240	TEMP +62°
DESCRIPTION Placement of New Boxes				JOB NO.	420120

