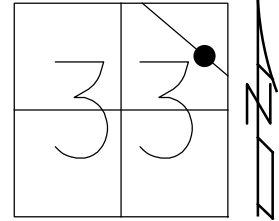


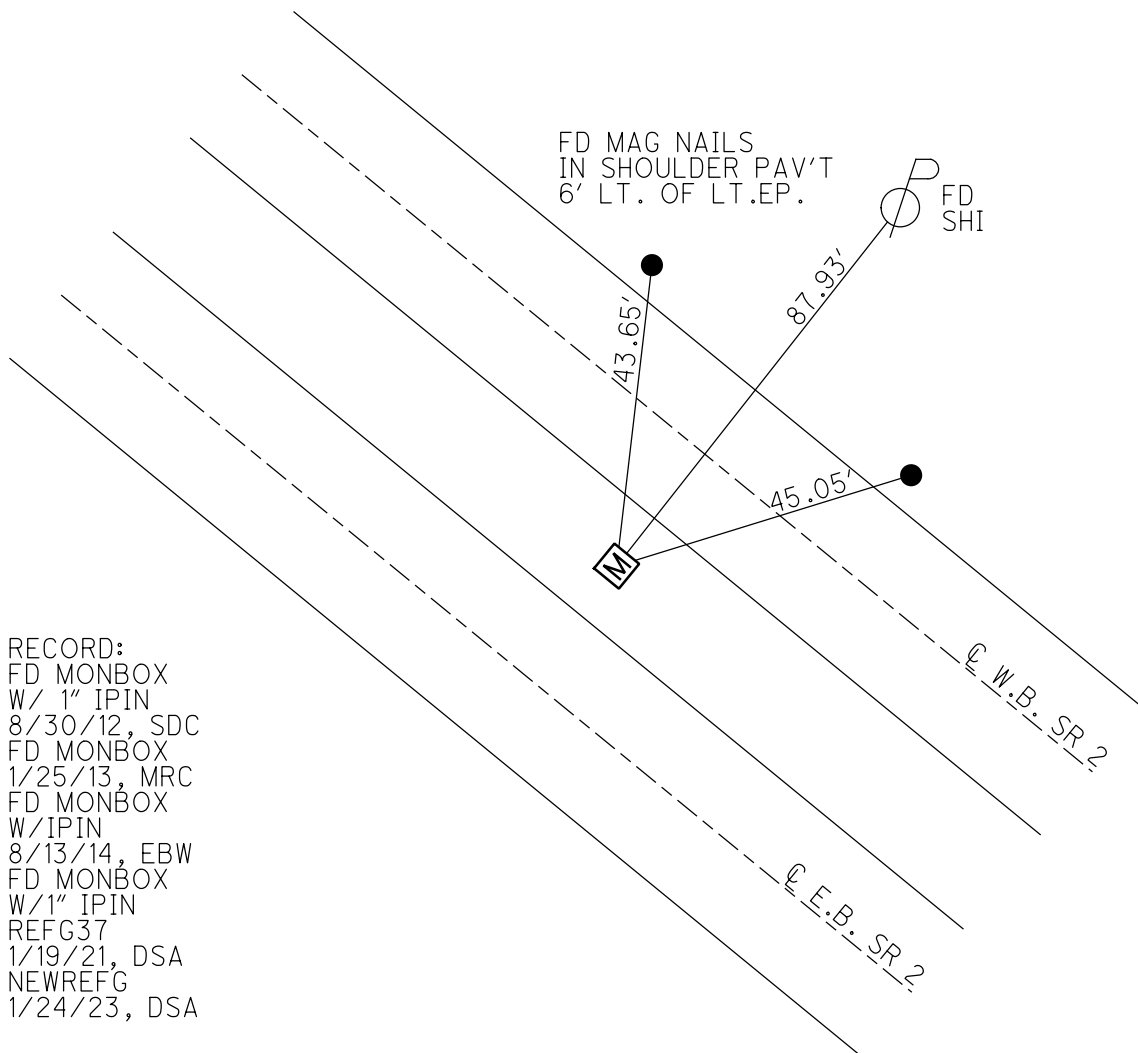
O.D.O.T. DISTRICT 2 SURVEY OFFICE (USE ONLY)

PERSONNEL _____ REFERENCE NO. 37 G SHEET 3 OF 48
 NOTES MILLER DATE 1/24/23 ROUTE SR 2
 H.C. AUBLE WEATHER SUNNY COUNTY OTTAWA
 R.C. NIESE TEMP. 33° TOWNSHIP ERIE
 DWG BY RHOADES PID 107959 SECTION 33
 T 7 N R 16 E

TYPE MONUMENT MONBOX W/ 1" IPIN
 ON SURFACE - ~~BELOW~~ ON
 OFFSET \odot PAVEMENT ON LT : RT
±31' TO LT EDGE PAVEMENT
 STATION: 882+12.87



HORZ. DATUM: NAD83(2011) GEOID: NAVD88 2018
 GRID: NORTHING: 678412.490 EASTING: 1827515.255



RECORD:
 FD MONBOX
 W/ 1" IPIN
 8/30/12, SDC
 FD MONBOX
 1/25/13, MRC
 FD MONBOX
 W/IPIN
 8/13/14, EBW
 FD MONBOX
 W/1" IPIN
 REFG37
 1/19/21, DSA
 NEWREFG
 1/24/23, DSA

O.D.O.T. DISTRICT 2 SURVEY OFFICE (USE ONLY)

PERSONNEL

REFERENCE NO. 37 G

SHEET 3 OF 45

NOTES RHOADES

DATE 1/19/21

ROUTE SR 2

H.C. AUBLE

WEATHER CLOUDY

COUNTY OTTAWA

R.C. _____

TEMP. 30°

TOWNSHIP ERIE

SECTION 33

DWG BY NIESE PID 107959

T 7 N R 16 E

TYPE MONUMENT MONBOX W/ 1" IPIN

ON SURFACE - ~~BELOW~~ ON

OFFSET ☉ PAVEMENT ON LT : RT

+31' TO LT EDGE PAVEMENT

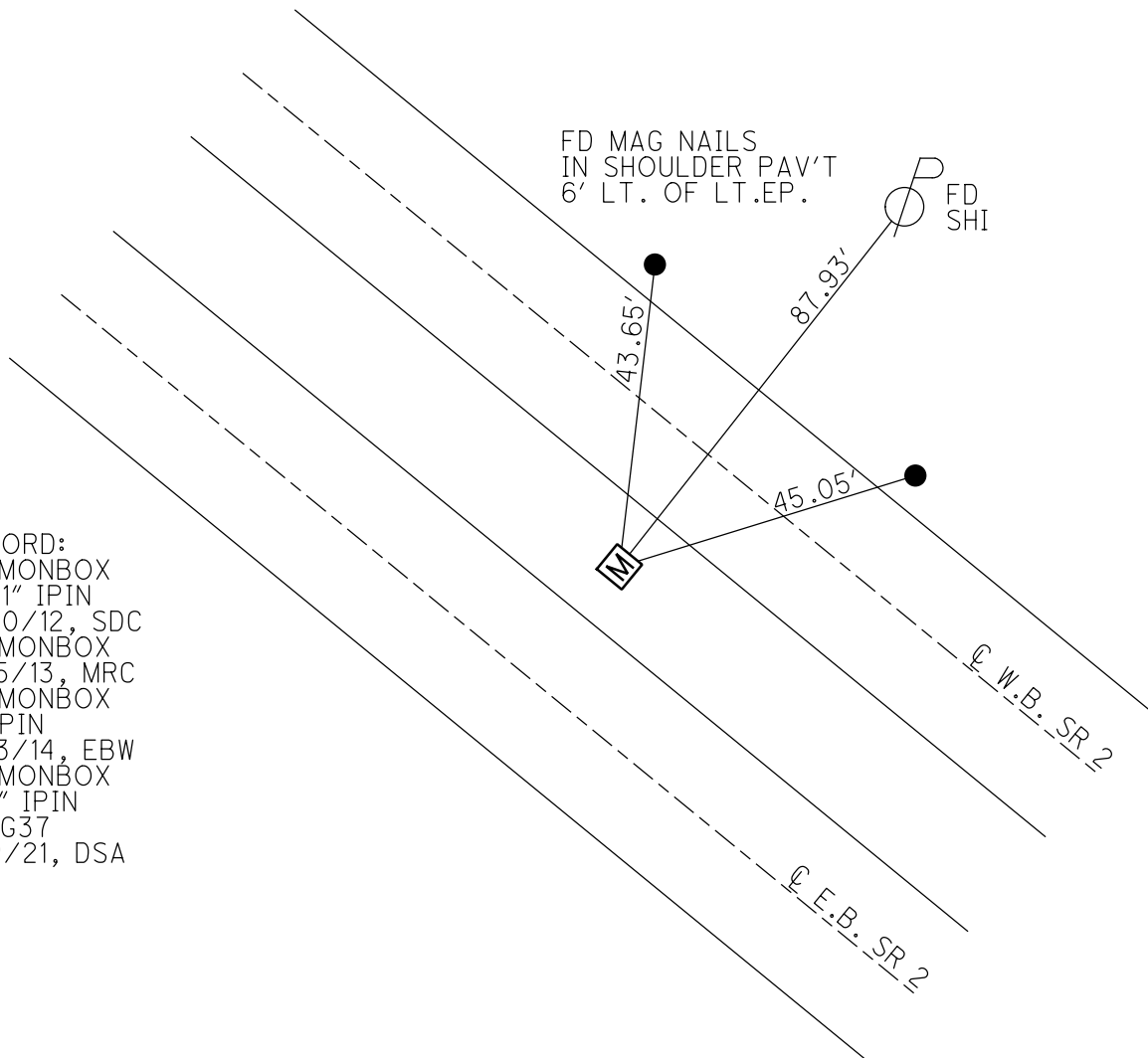
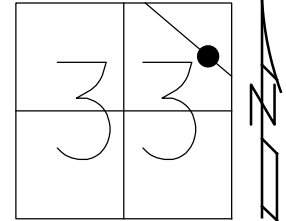
STATION: 882+12.87

HORIZ.DATUM: NAD83(2011)

GEOID: NAVD88 2018

GRID: NORTHING: 678412.451

EASTING: 1827515.240

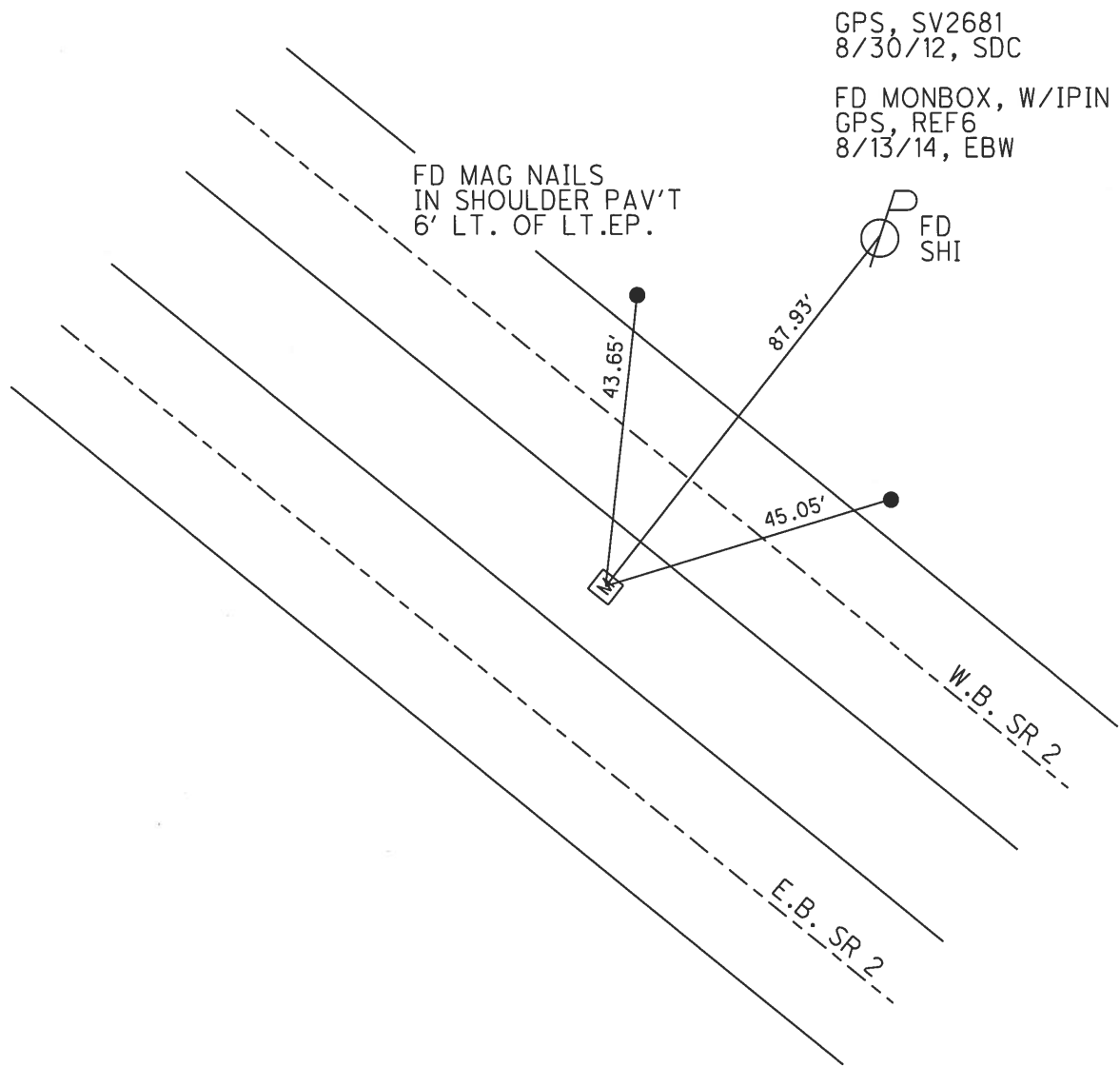
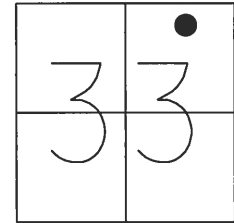


RECORD:
 FD MONBOX
 W/ 1" IPIN
 8/30/12, SDC
 FD MONBOX
 1/25/13, MRC
 FD MONBOX
 W/IPIN
 8/13/14, EBW
 FD MONBOX
 W/1" IPIN
 REFG37
 1/19/21, DSA

O.D.O.T. DISTRICT 2 SURVEY OFFICE (USE ONLY)

PERSONNEL _____ REFERENCE NO. G SHEET 3 OF 3
 NOTES LEU DATE 8/13/14 ROUTE SR 2
 H.C. HOMAN WEATHER SUNNY COUNTY OTTAWA
 R.C. WESTFALL TEMP. 65° TOWNSHIP ERIE
 _____ SECTION 33
 _____ T 7 N R 16 E

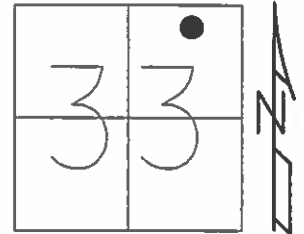
TYPE MONUMENT MON.BOX, W/IPIN
 ON SURFACE - ~~BELOW~~ ON
 LEFT - C PAV'T - RIGHT ON
 31'± TO LT EDGE PAVEMENT
 S.L.M. 882+12.87
 GRID: NORTHING: 678412.442 EASTING: 1827515.288



O.D.O.T. DISTRICT 2 SURVEY OFFICE (USE ONLY)

PERSONNEL _____ REFERENCE NO. 37G SHEET 3 OF 3
NOTES RHOADES DATE 1/25/13 ROUTE SR 2
H.C. CANTERBURY WEATHER OVERCAST COUNTY OTTAWA
R.C. LAU TEMP. 18° TOWNSHIP ERIE
SECTION 33
T 7 N R 16 E

TYPE MONUMENT MON.BOX
ON SURFACE - ~~BELOW~~ ON
LEFT - Q PAV'T - RIGHT ON
TO EDGE PAVEMENT
S.L.M. 882+12.87



Grid: Northing: 678412.523 Easting: 1827515.194

GPS, SV2681
8/30/12, SDC

