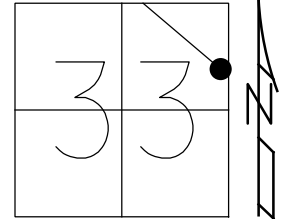


O.D.O.T. DISTRICT 2 SURVEY OFFICE (USE ONLY)

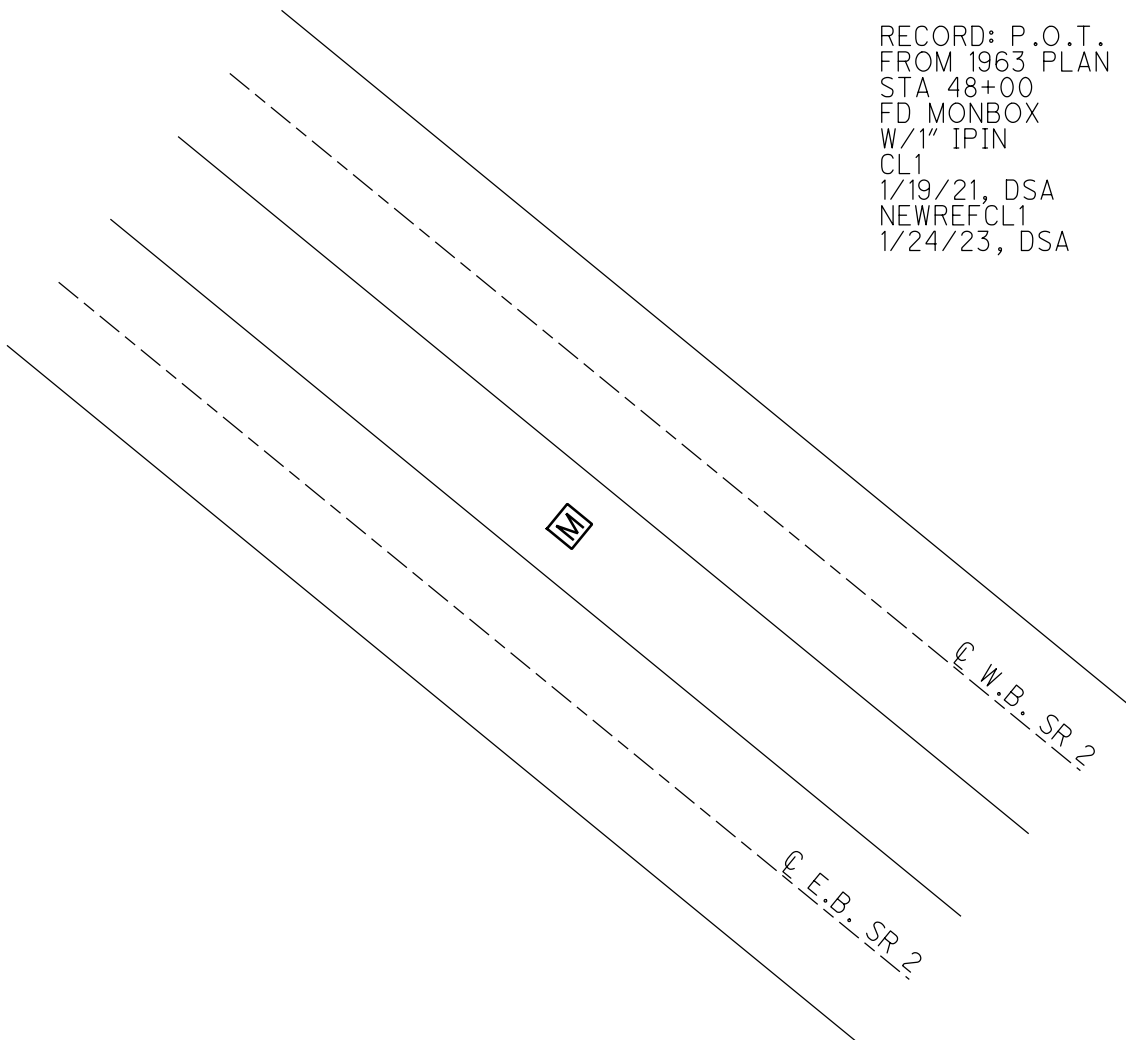
PERSONNEL _____ REFERENCE NO. 38 SHEET 4 OF 48
NOTES MILLER DATE 1/24/23 ROUTE SR 2
H.C. AUBLE WEATHER SUNNY COUNTY OTTAWA
R.C. NIESE TEMP. 33° TOWNSHIP ERIE
DWG BY RHOADES PID 107959 SECTION 33
T 7 N R 16 E

TYPE MONUMENT MONBOX W/1" IPIN
ON SURFACE - ~~BELOW~~ ON
OFFSET \varnothing PAVEMENT ON LT : RT
- TO - EDGE PAVEMENT
STATION: 892+12.80



HORIZ.DATUM: NAD83(2011) GEOID: NAVD88 2018
GRID: NORTHING: 677764.232 EASTING: 1828276.665

RECORD: P.O.T.
FROM 1963 PLAN
STA 48+00
FD MONBOX
W/1" IPIN
CL1
1/19/21, DSA
NEWREFCL1
1/24/23, DSA



O.D.O.T. DISTRICT 2 SURVEY OFFICE (USE ONLY)

PERSONNEL

REFERENCE NO. 38

SHEET 4 OF 45

NOTES RHOADES

DATE 1/19/21

ROUTE SR 2

H.C. AUBLE

WEATHER CLOUDY

COUNTY OTTAWA

R.C. _____

TEMP. 30°

TOWNSHIP ERIE

SECTION 33

DWG BY NIESE

PID 107959

T 7 N R 16 E

TYPE MONUMENT MONBOX W/1" IPIN

ON SURFACE - ~~BELOW~~ ON

OFFSET 0 PAVEMENT ON LT : RT

- TO - EDGE PAVEMENT

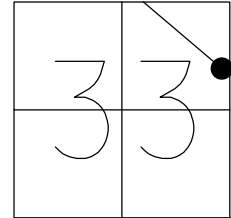
STATION: 892+12.80

HORIZ.DATUM: NAD83(2011)

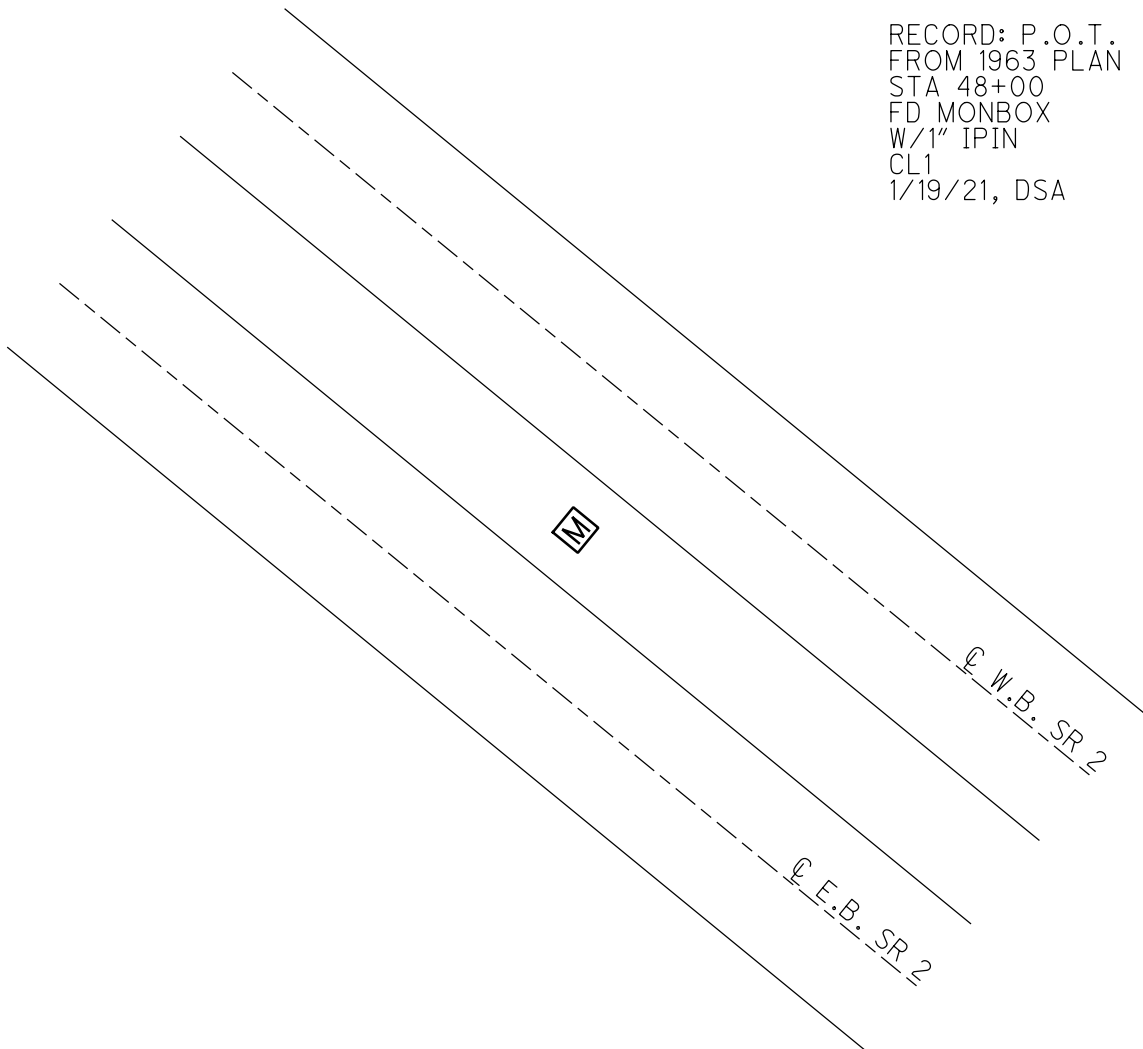
GEOID: NAVD88 2018

GRID: NORTHING: 677764.226

EASTING: 1828276.632



RECORD: P.O.T.
FROM 1963 PLAN
STA 48+00
FD MONBOX
W/1" IPIN
CL1
1/19/21, DSA



PERSONNEL	TITLE	PERSONNEL	TITLE
Schneider			
Masser			
Barbour			

COUNTY Ottawa DATE 1-3-73

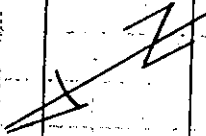
S. R. 2 WEATHER Co/b

SEC. 16.48 TEMP. 25°

DESCRIPTION Sec-33 Eric Twp.

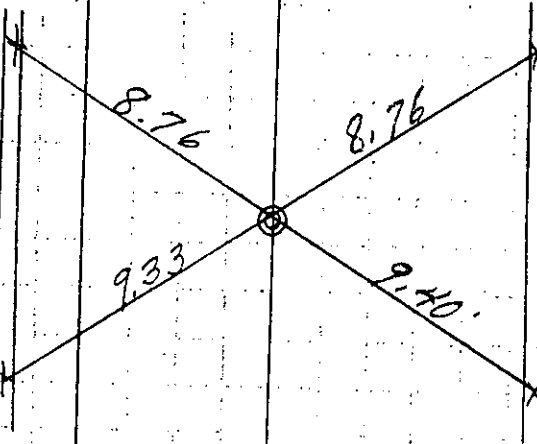
LEFT CENTER LINE RIGHT JOB NO.

P.O.T.
58+00



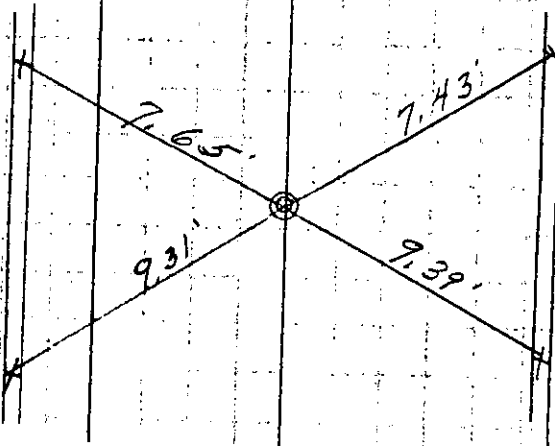
Mon. Box in Conc-

P.O.T.
48+00
8" Conc-Mon.
with 1/2" iron pin



4 "X's" on top
conc-curb

P.O.T.
38+00
8" Conc-Mon.
with 1/2" iron pin



4 "X's" on top
conc-curb