

O.D.O.T. DISTRICT 2 SURVEY OFFICE (USE ONLY)

PERSONNEL

REFERENCE NO. 39

SHEET 5 OF 48

NOTES MILLER

DATE 1/24/23

ROUTE SR 2

H.C. AUBLE

WEATHER SUNNY

COUNTY OTTAWA

R.C. NIESE

TEMP. 33°

TOWNSHIP ERIE

SECTION 34

DWG BY RHOADES PID 107959

T 7 N R 16 E

TYPE MONUMENT MONBOX W/ 1" IPIN

ON SURFACE - ~~BELOW~~ ON

OFFSET CL PAVEMENT ON LT : RT

- TO - EDGE PAVEMENT

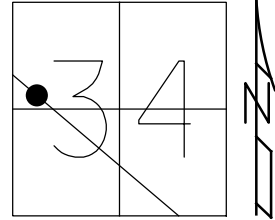
STATION: 902+12.93

HORZ.DATUM: NAD83(2011)

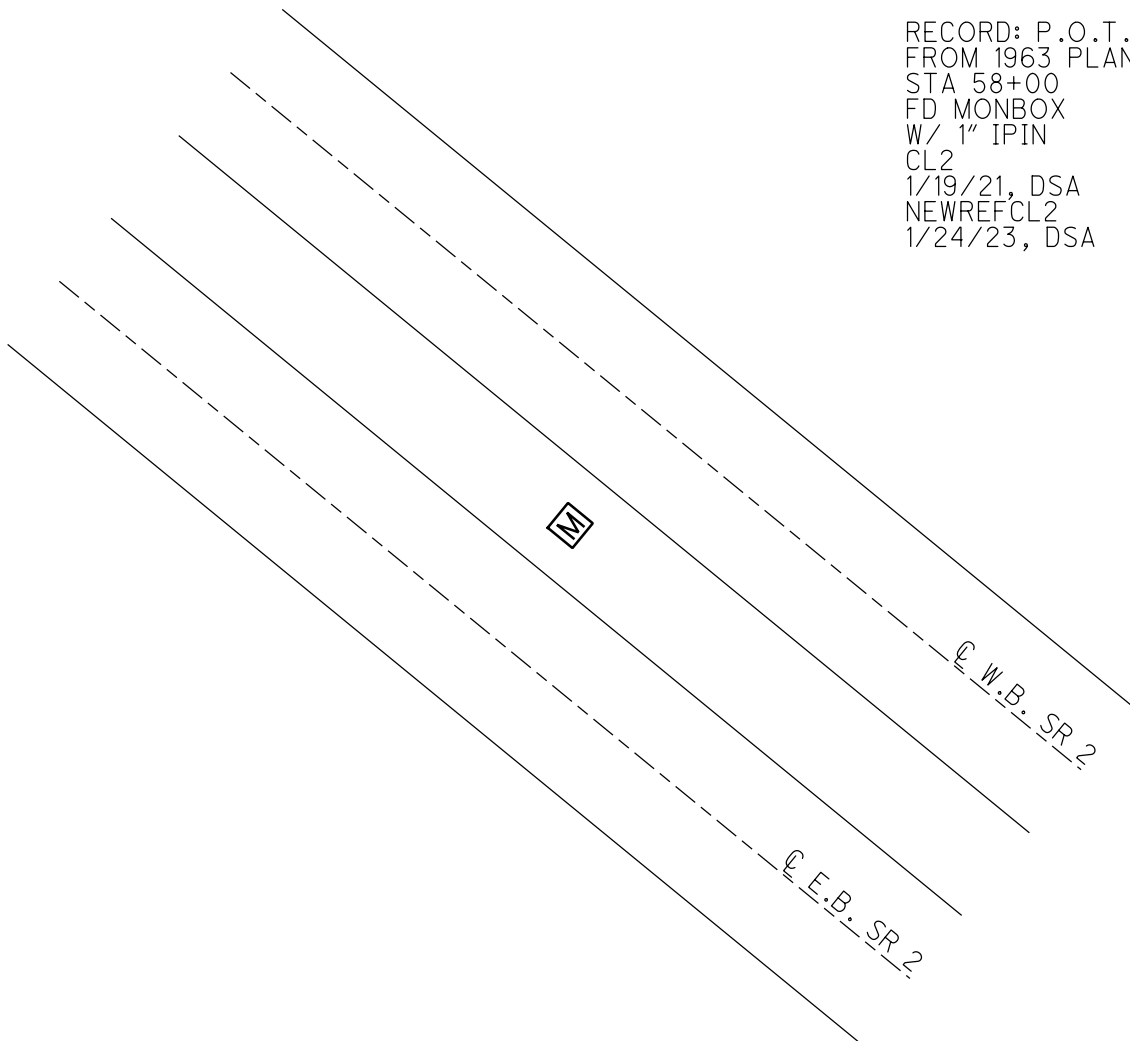
GEOID: NAVD88 2018

GRID: NORTHING: 677116.023

EASTING: 1829038.085



RECORD: P.O.T.
FROM 1963 PLAN
STA 58+00
FD MONBOX
W/ 1" IPIN
CL2
1/19/21, DSA
NEWREFCL2
1/24/23, DSA



O.D.O.T. DISTRICT 2 SURVEY OFFICE (USE ONLY)

PERSONNEL

REFERENCE NO. 39

SHEET 5 OF 45

NOTES RHOADES

DATE 1/19/21

ROUTE SR 2

H.C. AUBLE

WEATHER CLOUDY

COUNTY OTTAWA

R.C. _____

TEMP. 30°

TOWNSHIP ERIE

SECTION 34

DWG BY NIESE PID 107959

T 7 N R 16 E

TYPE MONUMENT MONBOX W/ 1" IPIN

ON SURFACE - ~~BELOW~~ ON

OFFSET CL PAVEMENT ON LT : RT

- TO - EDGE PAVEMENT

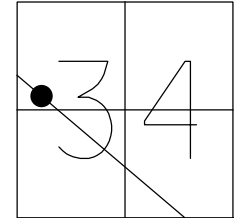
STATION: 902+12.93

HORIZ.DATUM: NAD83(2011)

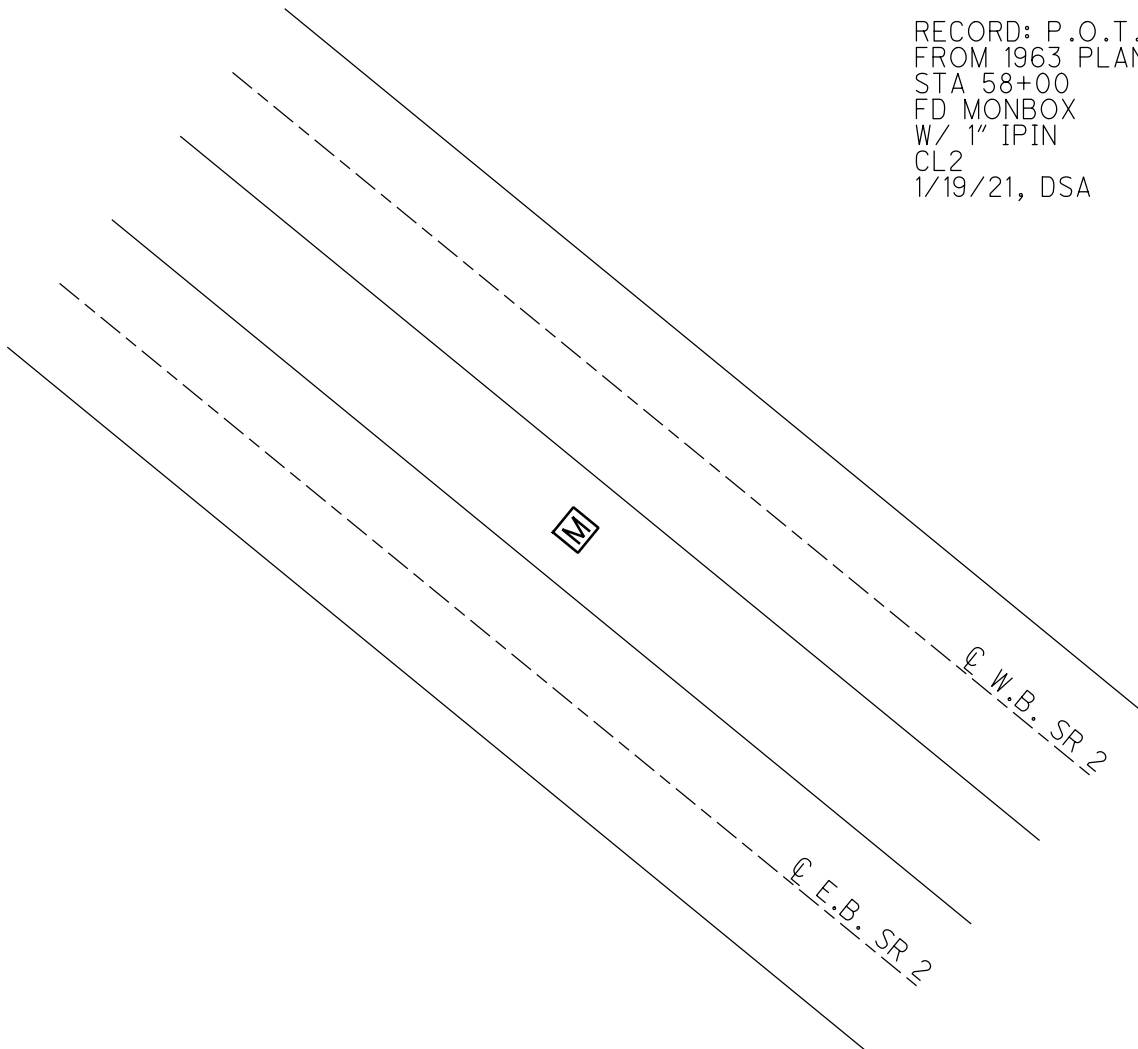
GEOID: NAVD88 2018

GRID: NORTHING: 677115.972

EASTING: 1829038.075



RECORD: P.O.T.
FROM 1963 PLAN
STA 58+00
FD MONBOX
W/ 1" IPIN
CL2
1/19/21, DSA



PERSONNEL TITLE PERSONNEL TITLE

Schneider

Masser

Barbour

COUNTY Ottawa

DATE 1-3-73

S. R. 2

WEATHER Cold

SEC. 16.48

TEMP. 25°

DESCRIPTION Sec-33 Eric Twp.

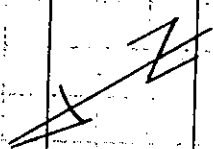
LEFT

CENTER LINE

RIGHT

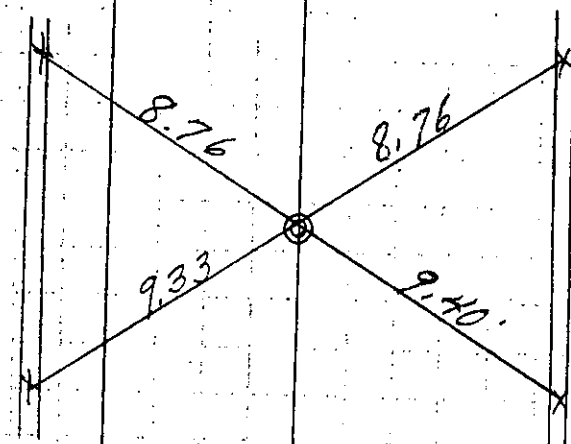
JOB NO.

P.O.T.
58+00



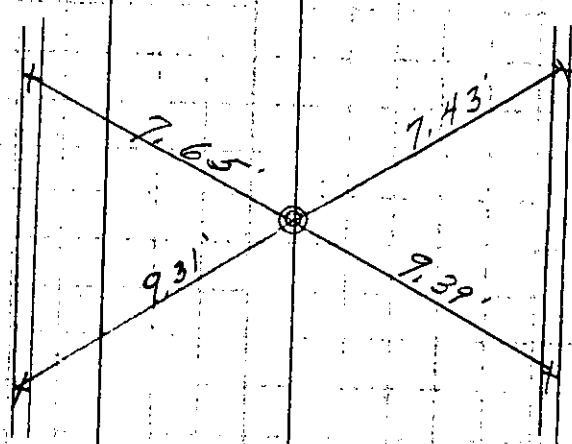
Man. Box in Conc.

P.O.T.
48+00
8" Conc-Man.
with 1/2" iron pin



4 "X's" on top
conc-curb

P.O.T.
38+00
8" Conc-Man.
with 1/2" iron pin



4 "X's" on top
conc-curb