

O.D.O.T. DISTRICT 2 SURVEY OFFICE (USE ONLY)

PERSONNEL

REFERENCE NO. 53

SHEET 19 OF 45

NOTES RHOADES

DATE 1/28/21

ROUTE SR 2

H.C. AUBLE

WEATHER CLOUDY

COUNTY OTTAWA

R.C. \_\_\_\_\_

TEMP. 22°

TOWNSHIP BAY

DWG BY NIESE

PID 107959

SECTION 2

T 6 N R 16 E

TYPE MONUMENT FD 3 1/2" DISK ATOP CBAR

ON SURFACE - ~~BELOW~~ ON

OFFSET Q PAVEMENT ON LT : RT

- TO - EDGE PAVEMENT

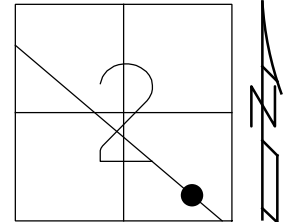
STATION: 1020+12.74

HORZ.DATUM: NAD83(2011)

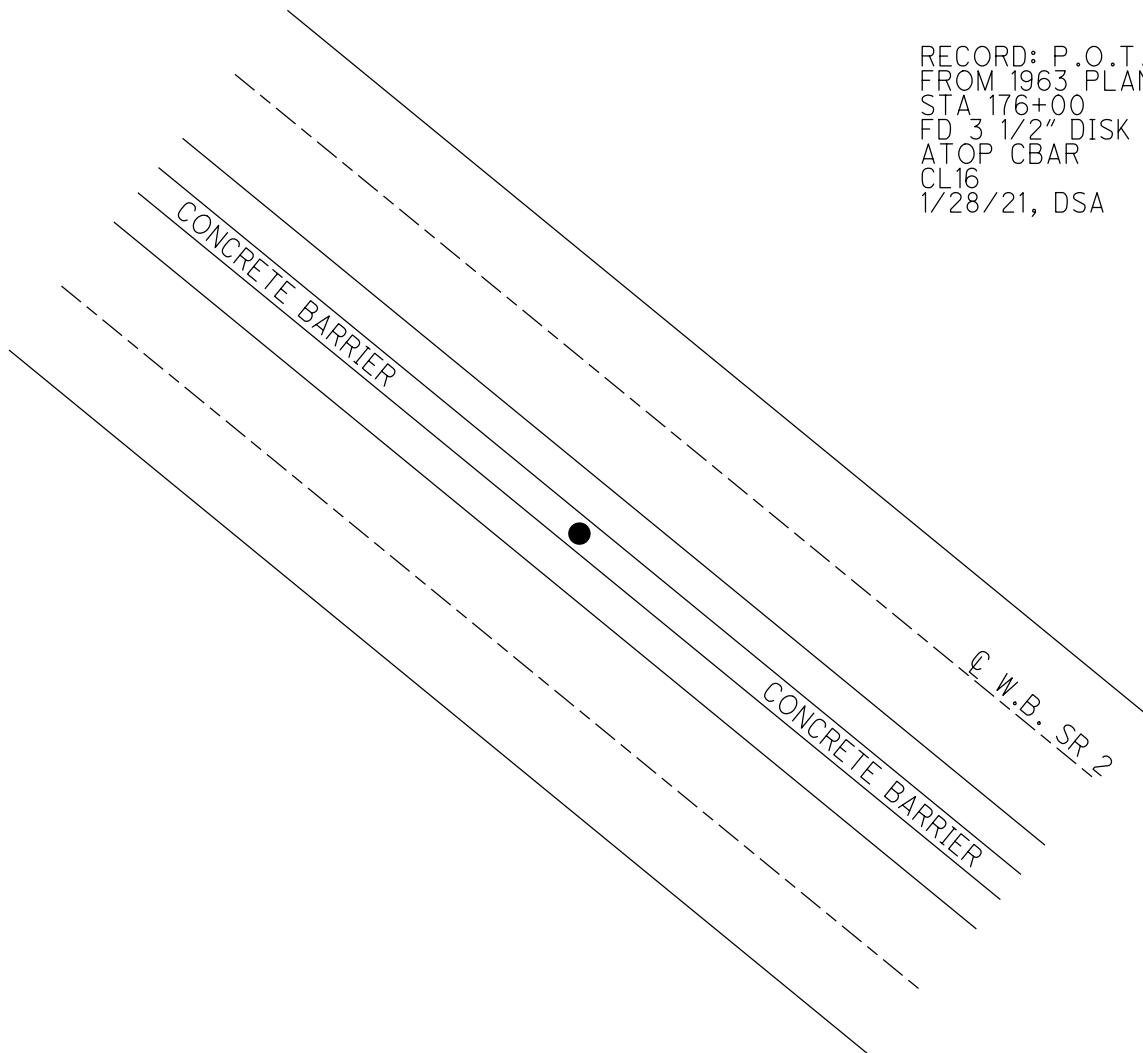
GEOID: NAVD88 2018

GRID: NORTHING: 669467.922

EASTING: 1838023.792



RECORD: P.O.T.  
FROM 1963 PLAN  
STA 176+00  
FD 3 1/2" DISK  
ATOP CBAR  
CL16  
1/28/21, DSA



PERSONNEL TITLE PERSONNEL TITLE

SHEET NO. 4

COUNTY Ottawa

DATE 1-3-73

S. R. 2

WEATHER Cold-clear

SEC. 16.48

TEMP. 350

DESCRIPTION SEC-2 Bay Twp.

LEFT

CENTER LINE

RIGHT

JOB NO.

P.O.T.

176+00

Mon. Box set in conc.

P.O.T.

168+00

Mon. Box set in conc.

P.O.T.

160+00

Mon. Box set in conc.

P.O.T.

157+00

Mon. Box set in conc.

P.O.T.

143+00

Mon. Box set in conc.

P.O.T.

135+00

Mon. Box set in conc.

P.O.T.

127+00

Mon. Box set in conc.

