

O.D.O.T. DISTRICT 2 SURVEY OFFICE (USE ONLY)

PERSONNEL

REFERENCE NO. 69

SHEET 32 OF 45

NOTES RHOADES

DATE 1/29/21

ROUTE SR 2

H.C. AUBLE

WEATHER CLOUDY

COUNTY OTTAWA

R.C. _____

TEMP. 30

TOWNSHIP PORTAGE

DWG BY NIESE

PID 107959

SECTION 8

T 6 N R 17 E

TYPE MONUMENT CMON

ON SURFACE - ~~BELOW~~ ON

OFFSET 0 PAVEMENT ON LT : RT

- TO - EDGE PAVEMENT

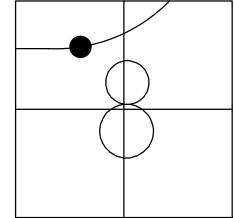
STATION: 1158+74.47

HORIZ.DATUM: NAD83(2011)

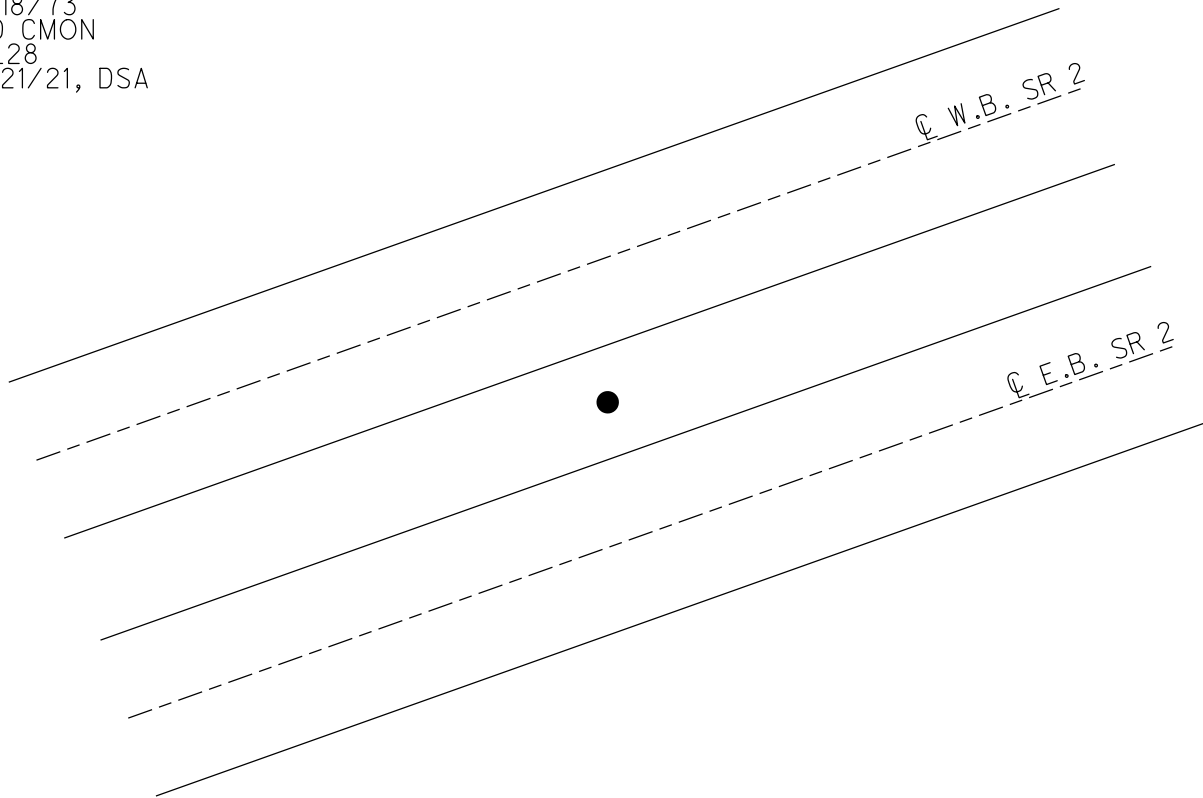
GEOID: NAVD88 2018

GRID: NORTHING: 667555.306

EASTING: 1851286.940



RECORD: P.O.C.
FROM 1963 PLAN
STA 315+00
FD CMON
W/ 1/2" IPIN
1/18/73
FD CMON
CL28
1/21/21, DSA



PERSONNEL TITLE PERSONNEL TITLE

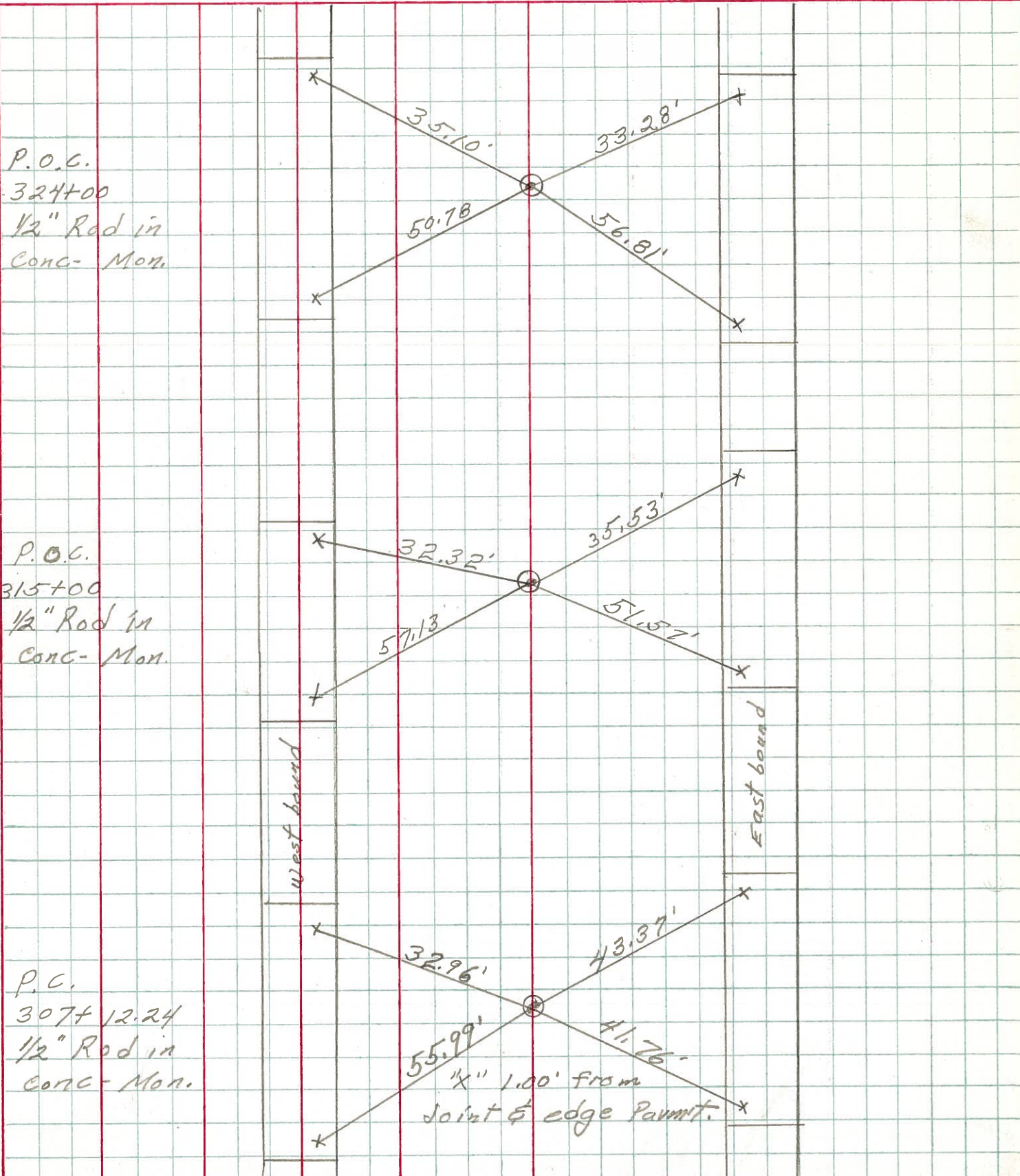
COUNTY Ottawa DATE 1-18-73

S. R. 2 WEATHER Fair-windy

SEC. 19.60 TEMP. 55°

DESCRIPTION Sec. 8 Portage Twp. JOB NO.

LEFT CENTER LINE RIGHT



P.O.C.
324+00
1/2" Rod in
Conc- Mon.

P.O.C.
315+00
1/2" Rod in
Conc- Mon.

P.O.C.
307+12.24
1/2" Rod in
Conc- Mon.