

O.D.O.T. DISTRICT 2 SURVEY OFFICE (USE ONLY)

PERSONNEL

REFERENCE NO. 71

SHEET 34 OF 45

NOTES RHOADES

DATE 1/29/21

ROUTE SR 2

H.C. AUBLE

WEATHER CLOUDY

COUNTY OTTAWA

R.C. _____

TEMP. 30°

TOWNSHIP PORTAGE

DWG BY NIESE PID 107959

SECTION 8

T 6 N R 17 E

TYPE MONUMENT CMON

ON SURFACE - ~~BELOW~~ ON

OFFSET \varnothing PAVEMENT ON LT : RT

- TO - EDGE PAVEMENT

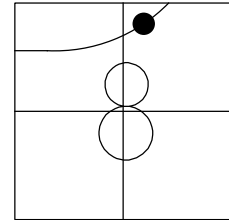
STATION: 1175+73.95

HORIZ.DATUM: NAD83(2011)

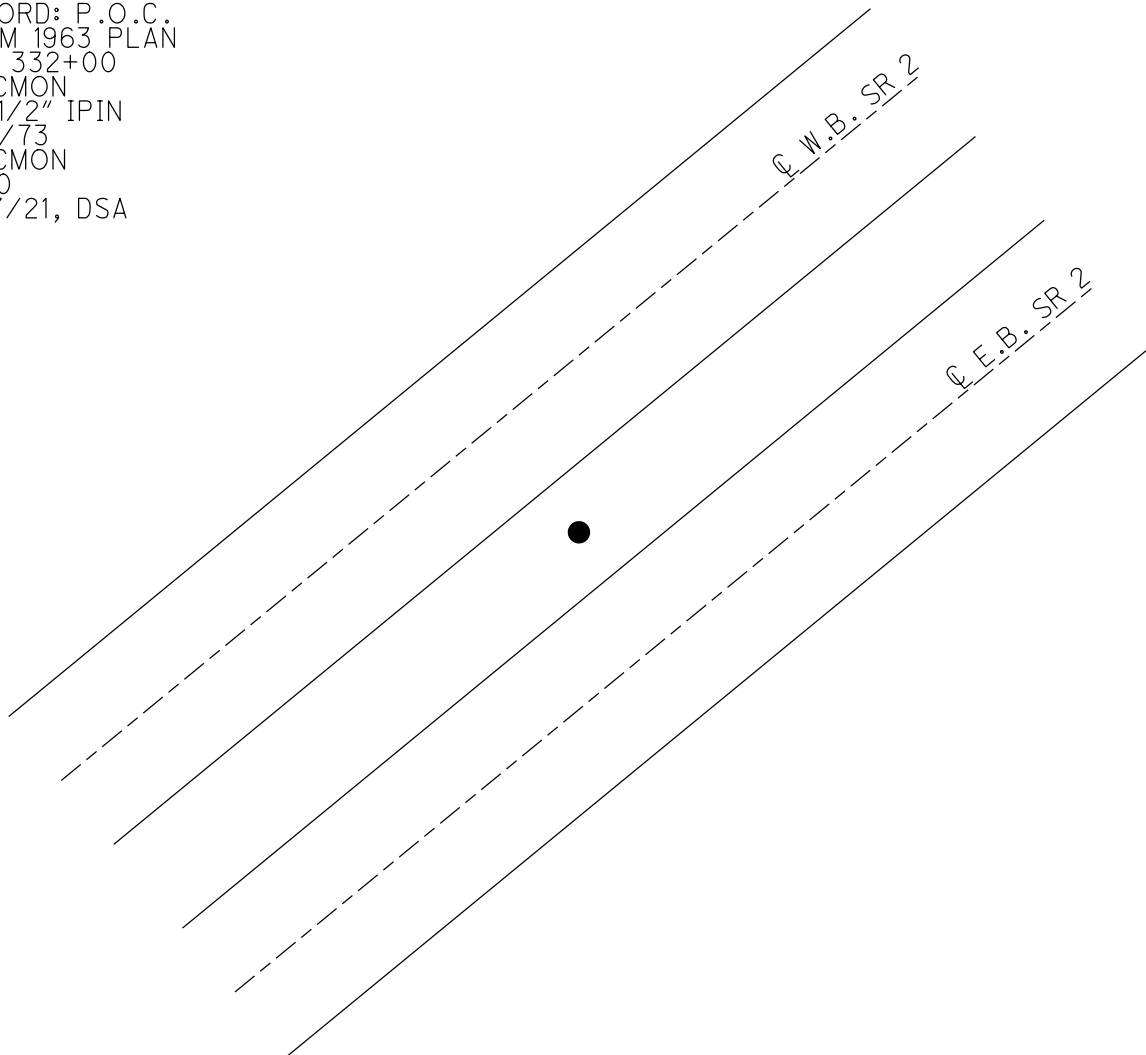
GEOID: NAVD88 2018

GRID: NORTHING: 668202.563

EASTING: 1852843.792



RECORD: P.O.C.
FROM 1963 PLAN
STA 332+00
FD CMON
W/ 1/2" IPIN
1/18/73
FD CMON
CL30
1/27/21, DSA



PERSONNEL TITLE PERSONNEL TITLE

COUNTY Ottawa DATE 1-18-73

S. R. 2 WEATHER Fair

SEC. 19.60 TEMP. 60°

DESCRIPTION Sec. 8 & 5 Portage Twp. JOB NO.

LEFT CENTER LINE RIGHT

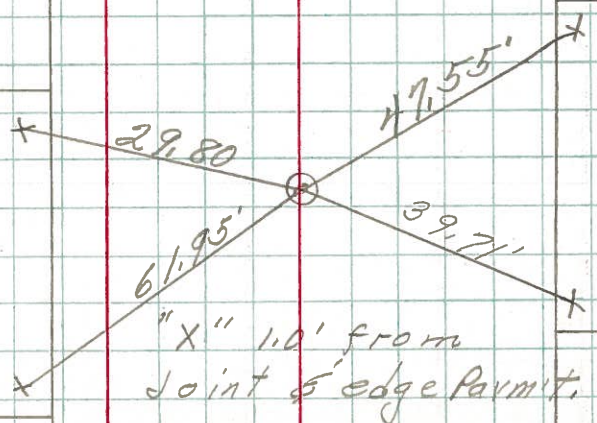
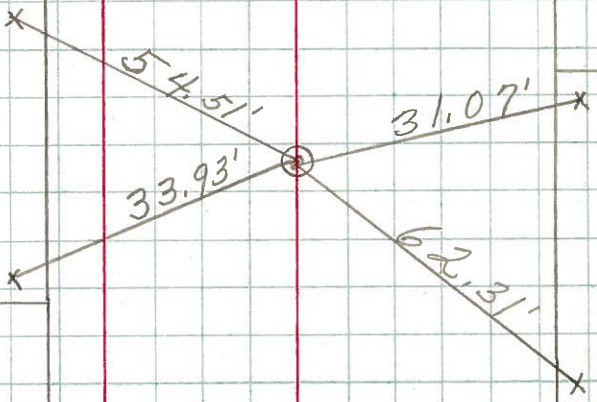
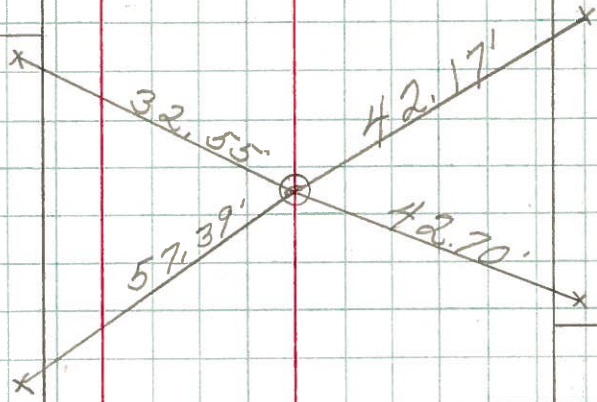
P.O.T.
350+00
Sec. 5
1/2" Rod in
conc. Man

P.T.
340+04.29
1/2" Rod in
conc Man
Sec-5

P.O.C.
332+00
1/2" Rod in
conc Man

West Bound

East Bound



"X" 1.0' from Joint & edge Parmit.