

O.D.O.T. DISTRICT 2 SURVEY OFFICE (USE ONLY)

PERSONNEL

REFERENCE NO. 73

SHEET 36 OF 45

NOTES RHOADES

DATE 1/29/21

ROUTE SR 2

H.C. AUBLE

WEATHER CLOUDY

COUNTY OTTAWA

R.C. \_\_\_\_\_

TEMP. 30°

TOWNSHIP PORTAGE

DWG BY NIESE PID 107959

SECTION 5

T 6 N R 17 E

TYPE MONUMENT CMON

ON SURFACE - ~~BELOW~~ ON

OFFSET Q PAVEMENT ON LT : RT

- TO - EDGE PAVEMENT

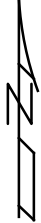
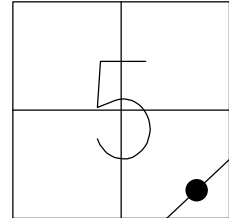
STATION: 1193+74.86

HORZ.DATUM: NAD83(2011)

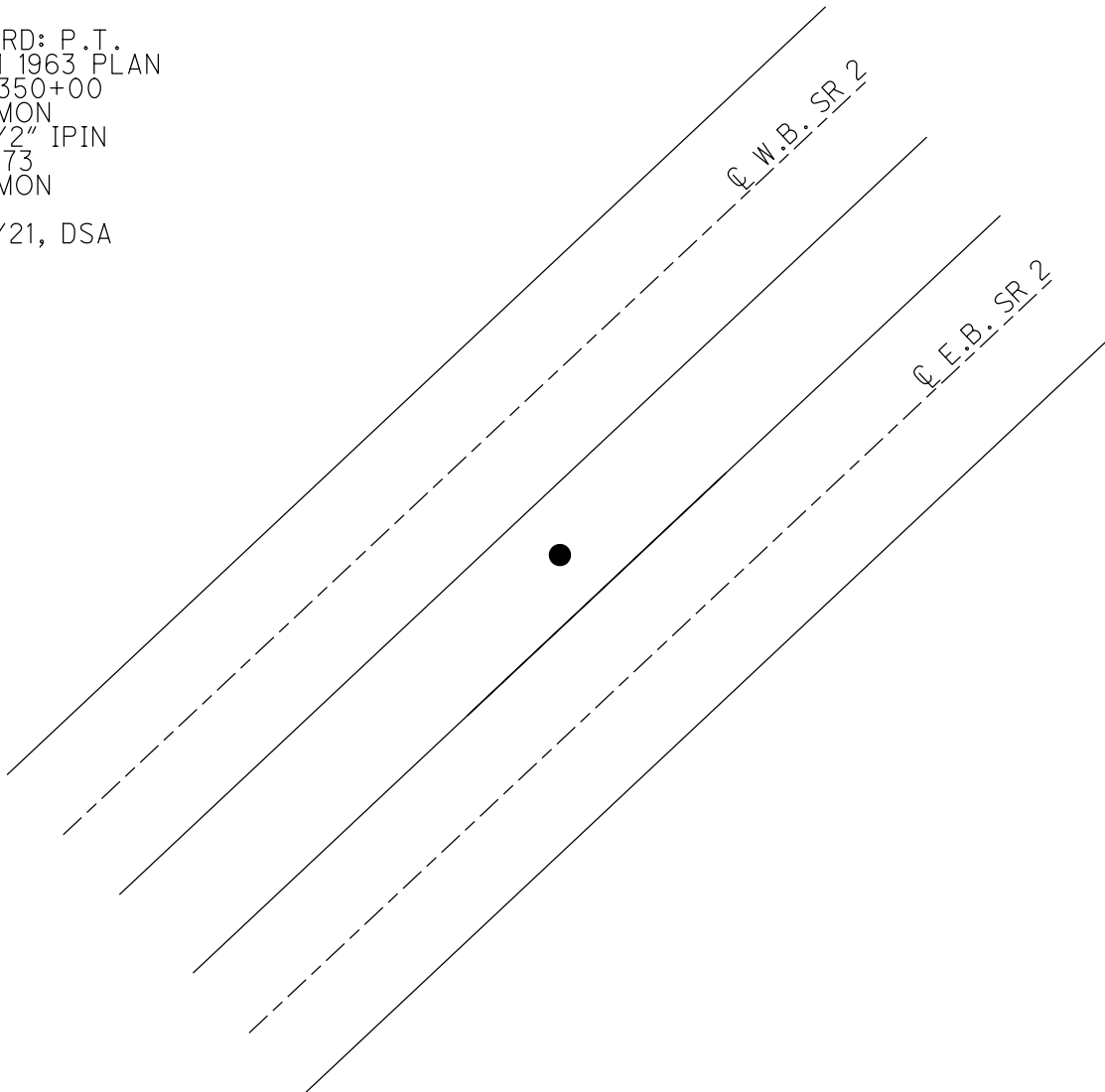
GEOID: NAVD88 2018

GRID: NORTHING: 669453.693

EASTING: 1854133.663



RECORD: P.T.  
FROM 1963 PLAN  
STA 350+00  
FD CMON  
W/ 1/2" IPIN  
1/18/73  
FD CMON  
CL32  
1/27/21, DSA



PERSONNEL TITLE PERSONNEL TITLE

COUNTY Ottawa DATE 1-18-73

S. R. 2 WEATHER Fair

SEC. 19.60 TEMP. 60°

DESCRIPTION Sec. 8 & 5 Portage Twp. JOB NO.

LEFT CENTER LINE RIGHT

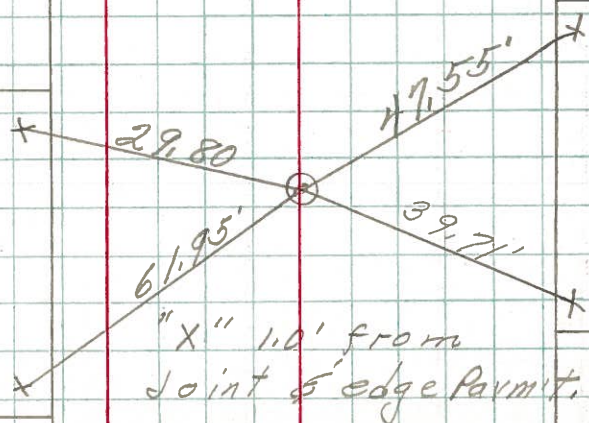
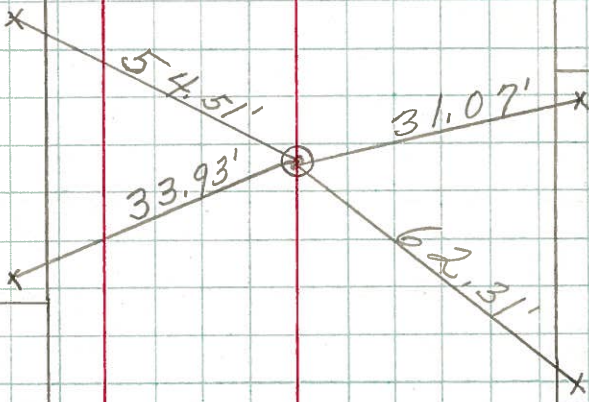
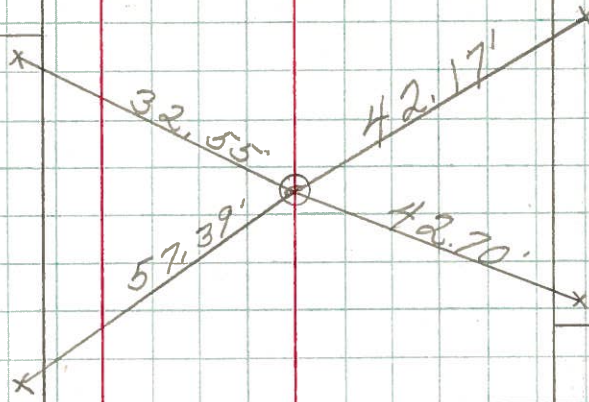
P.O.T.  
350+00  
Sec. 5  
1/2" Rod in  
conc. Man

P.T.  
340+04.29  
1/2" Rod in  
conc Man  
Sec-5

P.O.C.  
332+00  
1/2" Rod in  
conc Man

West Bound

East Bound



"X" 1.0' from  
Joint & edge Parmit.