

O.D.O.T. DISTRICT 2 SURVEY OFFICE (USE ONLY)

PERSONNEL

REFERENCE NO. 74

SHEET 37 OF 45

NOTES RHOADES

DATE 1/29/21

ROUTE SR 2

H.C. AUBLE

WEATHER CLOUDY

COUNTY OTTAWA

R.C. \_\_\_\_\_

TEMP. 30°

TOWNSHIP PORTAGE

DWG BY NIESE PID 107959

SECTION 5

T 6 N R 17 E

TYPE MONUMENT CMON

ON SURFACE - ~~BELOW~~ ON

OFFSET CL PAVEMENT ON LT : RT

- TO - EDGE PAVEMENT

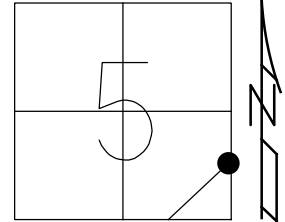
STATION: 1203+74.69

HORZ.DATUM: NAD83(2011)

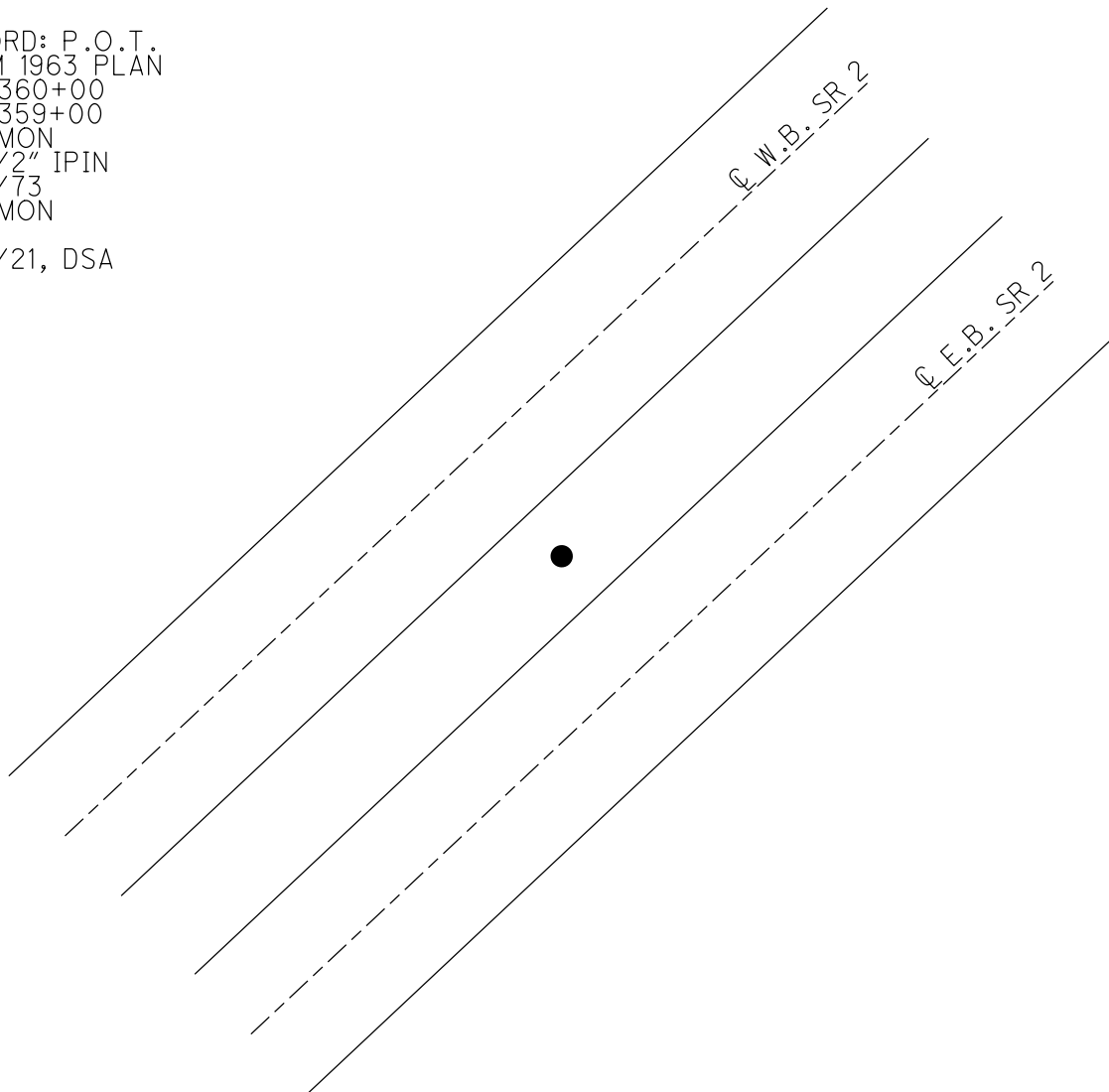
GEOID: NAVD88 2018

GRID: NORTHING: 670182.638

EASTING: 1854817.949



RECORD: P.O.T.  
FROM 1963 PLAN  
STA 360+00  
STA 359+00  
FD CMON  
W/ 1/2" IPIN  
1/22/73  
FD CMON  
CL33  
1/27/21, DSA



PERSONNEL TITLE PERSONNEL TITLE

COUNTY Ottawa

DATE 1-22-73

S. R. 2

WEATHER cloudy

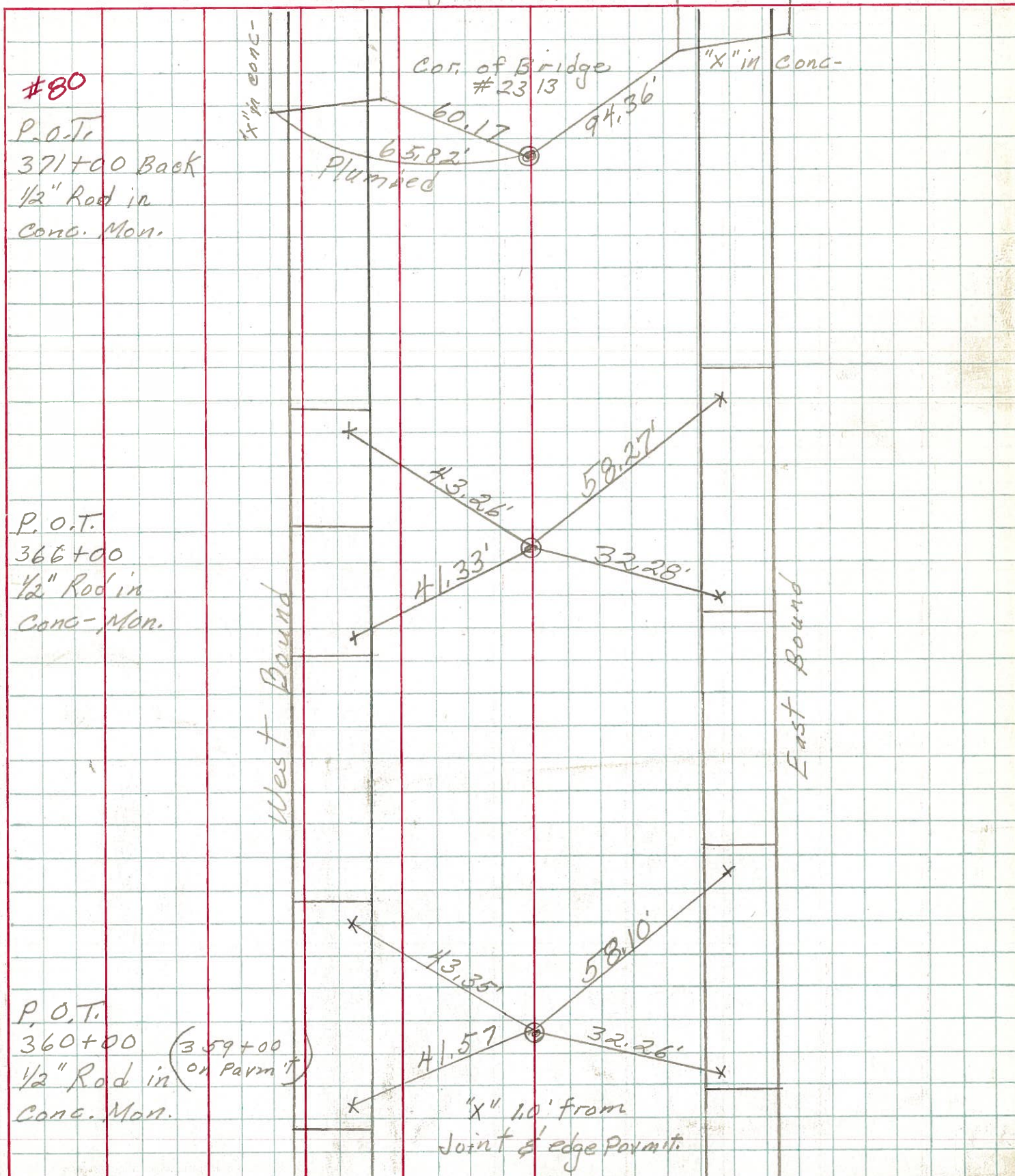
SEC. 19.60

TEMP. 45°

DESCRIPTION sec-465 Portage Twp.

JOB NO.

LEFT CENTER LINE RIGHT



#80

P.O.T.  
371+00 Back  
1/2" Rod in  
Conc. Mon.

Cor. of Bridge  
#2313

"X" in Conc-

60.17  
65.82'  
Plumbed  
94.36'

P.O.T.  
366+00  
1/2" Rod in  
Conc. Mon.

West Bound

East Bound

43.26'  
58.27'  
41.33'  
32.28'

P.O.T.  
360+00 (359+00  
or Parm T)  
1/2" Rod in  
Conc. Mon.

43.35'  
58.10'  
41.57'  
32.26'

"X" 1.0' from  
Joint of edge Parmit.