

O.D.O.T. DISTRICT 2 SURVEY OFFICE (USE ONLY)

PERSONNEL

REFERENCE NO. 75

SHEET 38 OF 45

NOTES RHOADES DATE 1/29/21

H.C. AUBLE WEATHER CLOUDY

R.C. _____ TEMP. 30°

ROUTE SR 2

COUNTY OTTAWA

TOWNSHIP PORTAGE

SECTION 4

DWG BY NIESE PID 107959

T 6 N R 17 E

TYPE MONUMENT CMON

ON SURFACE - ~~BELOW~~ ON

OFFSET Q PAVEMENT ON LT : RT

- TO - EDGE PAVEMENT

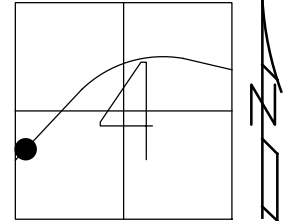
STATION: 1209+74.51

HORZ.DATUM: NAD83(2011)

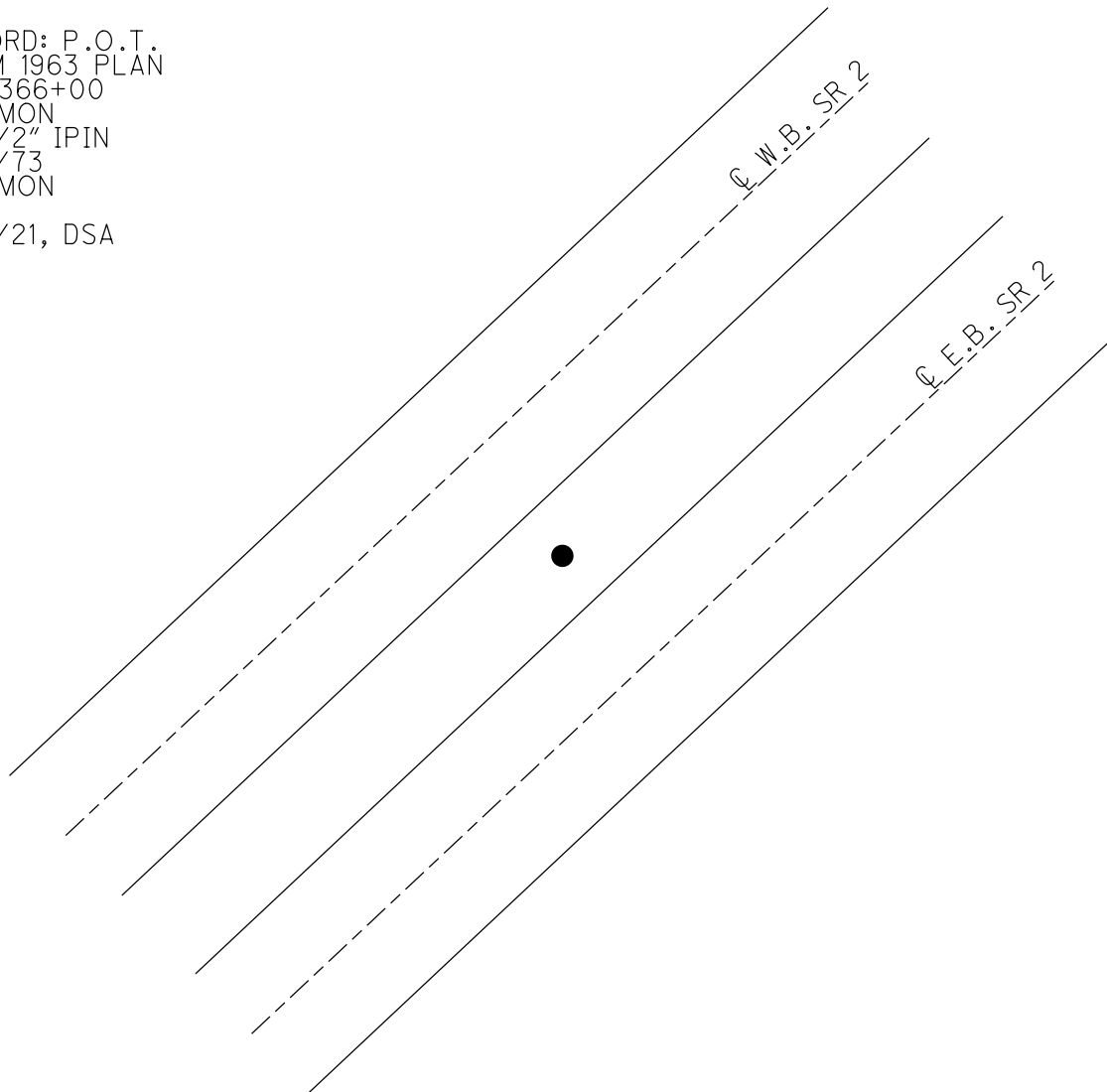
GEOID: NAVD88 2018

GRID: NORTHING: 670620.039

EASTING: 1855228.438



RECORD: P.O.T.
FROM 1963 PLAN
STA 366+00
FD CMON
W/ 1/2" IPIN
1/22/73
FD CMON
CL34
1/27/21, DSA



PERSONNEL TITLE PERSONNEL TITLE

COUNTY Ottawa

DATE 1-22-73

S. R. 2

WEATHER cloudy

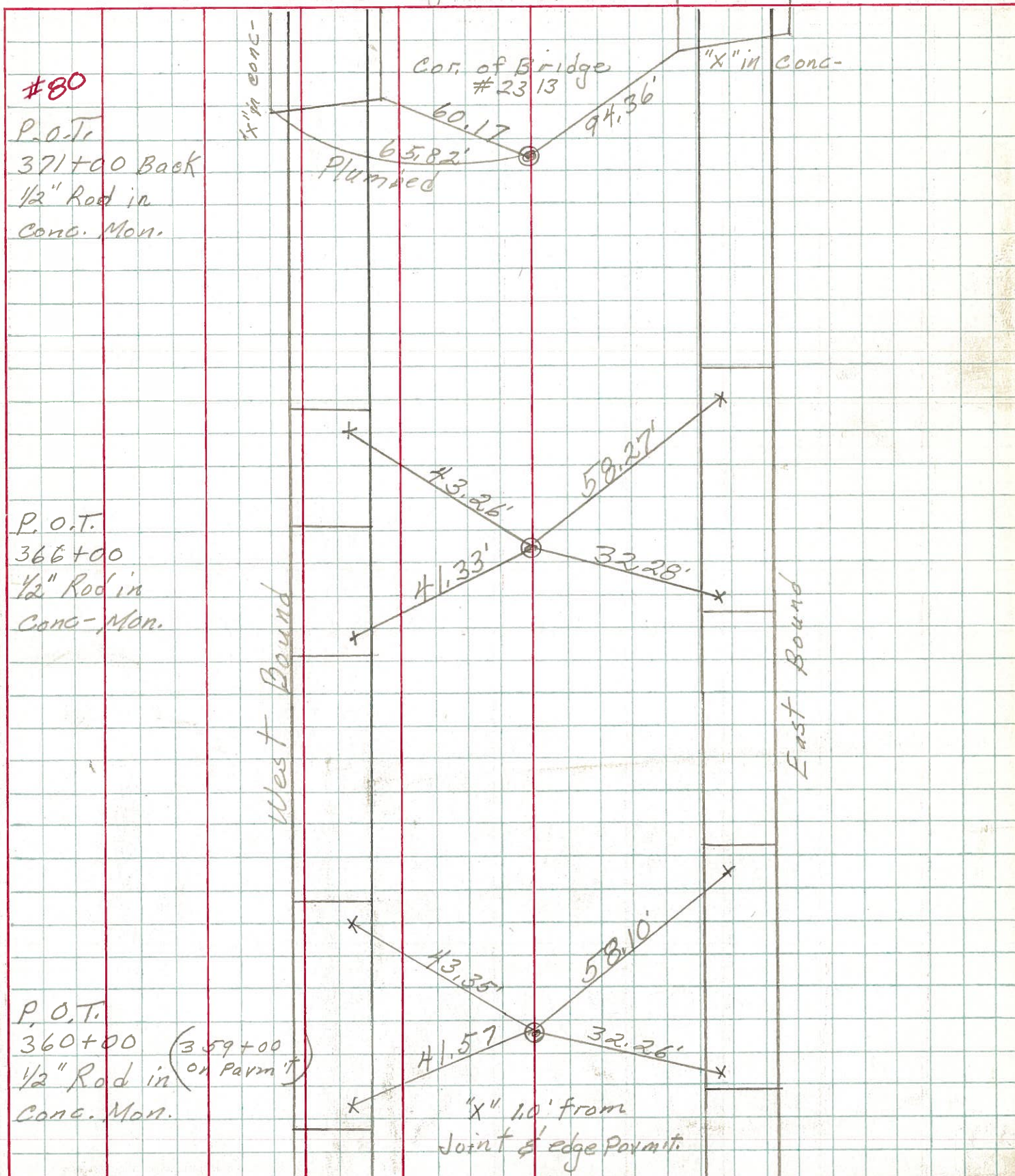
SEC. 19.60

TEMP. 45°

DESCRIPTION sec-465 Portage Twp.

JOB NO.

LEFT CENTER LINE RIGHT



#80

P.O.T.
371+00 Back
1/2" Rod in
Conc. Mon.

Cor. of Bridge
#2313

"X" in Conc-

60.17
65.82'
Plumbed
94.36'

P.O.T.
366+00
1/2" Rod in
Conc. Mon.

43.26'
58.27'
41.33'
32.28'

West Bound

East Bound

P.O.T.
360+00 (359+00
or Parm T)
1/2" Rod in
Conc. Mon.

43.35'
58.10'
41.57'
32.26'

"X" 1.0' from
Joint of edge Parmit.