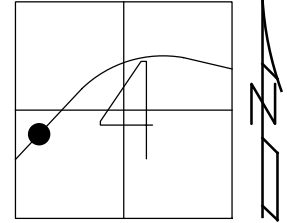


O.D.O.T. DISTRICT 2 SURVEY OFFICE (USE ONLY)

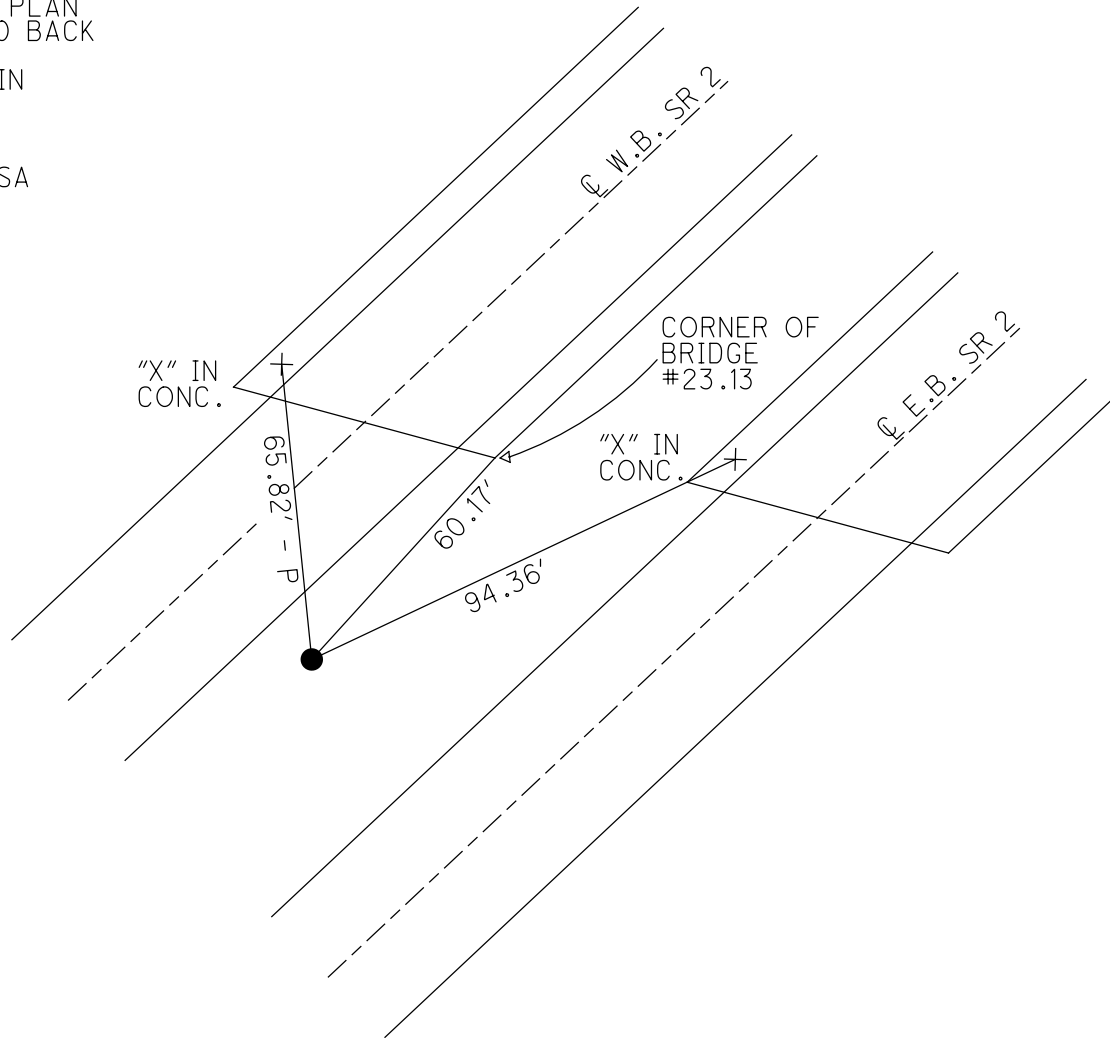
PERSONNEL \_\_\_\_\_ REFERENCE NO. 76 SHEET 39 OF 45  
 NOTES RHOADES DATE 1/29/21 ROUTE SR 2  
 H.C. AUBLE WEATHER CLOUDY COUNTY OTTAWA  
 R.C. \_\_\_\_\_ TEMP. 30° TOWNSHIP PORTAGE  
 DWG BY NIESE PID 107959 SECTION 4  
 T 6 N R 17 E

TYPE MONUMENT CMON  
 ON SURFACE - ~~BELOW~~ ON  
 OFFSET ☐ PAVEMENT ON LT : RT  
 -     TO     EDGE PAVEMENT  
 STATION: 1214+74.61



HORIZ. DATUM: NAD83(2011) GEOID: NAVD88 2018  
 GRID: NORTHING: 670984.544 EASTING: 1855570.789

RECORD: P.O.T.  
 FROM 1963 PLAN  
 STA 371+00 BACK  
 FD CMON  
 W/ 1/2" IPIN  
 1/22/73  
 FD CMON  
 CL35  
 1/27/21, DSA



PERSONNEL TITLE PERSONNEL TITLE

COUNTY Ottawa

DATE 1-22-73

S. R. 2

WEATHER cloudy

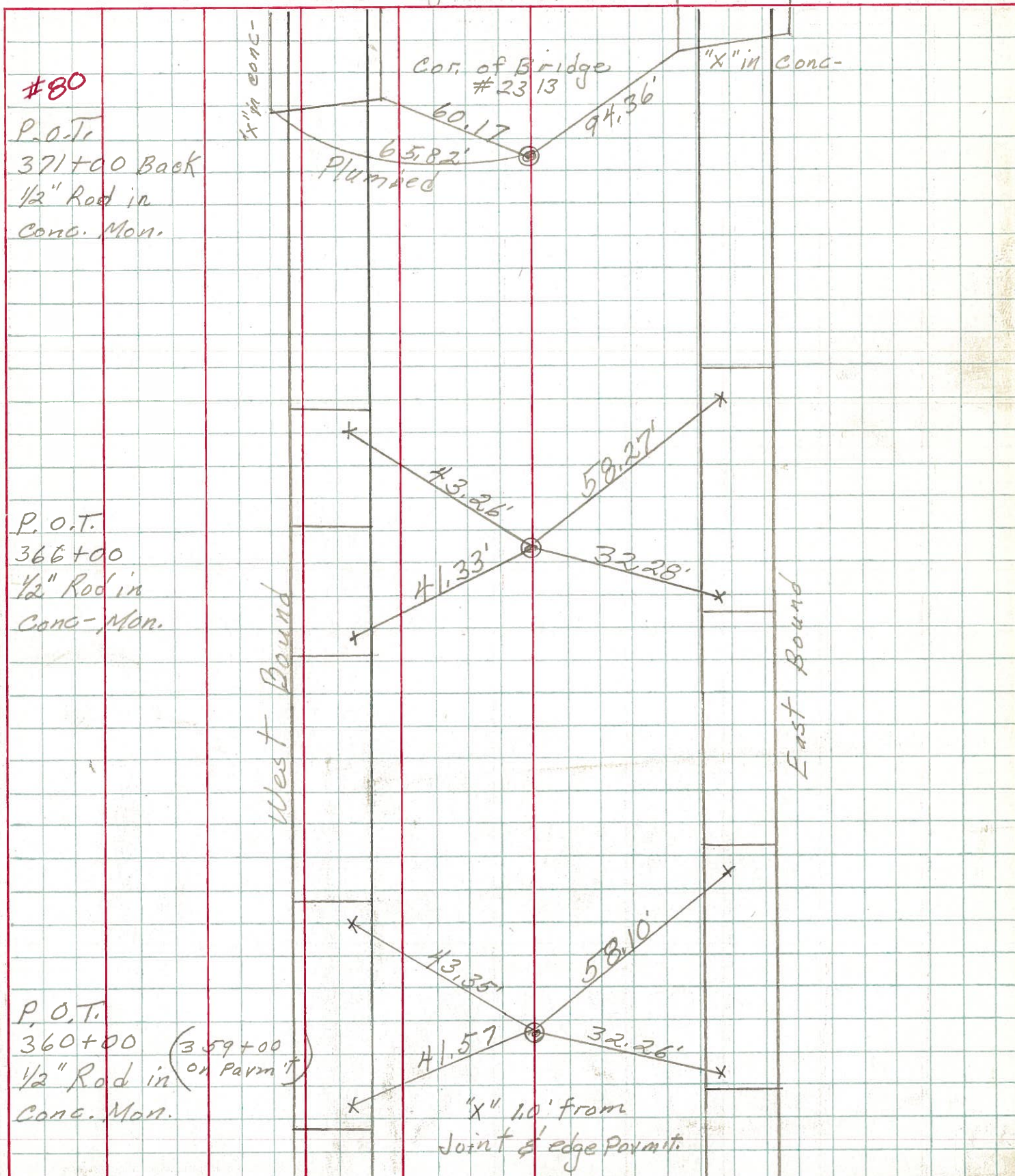
SEC. 19.60

TEMP. 45°

DESCRIPTION sec-465 Portage Twp.

JOB NO.

LEFT CENTER LINE RIGHT



#80

P.O.T.  
371+00 Back  
1/2" Rod in  
Conc. Mon.

Cor. of Bridge  
#2313

"X" in Conc-

60.17  
65.82'  
Plumbed  
94.36'

P.O.T.  
366+00  
1/2" Rod in  
Conc. Mon.

43.26'  
58.27'  
41.33'  
32.28'

West Bound

East Bound

P.O.T.  
360+00 (359+00  
or Parm T)  
1/2" Rod in  
Conc. Mon.

43.35'  
58.10'  
41.57'  
32.26'

"X" 1.0' from  
Joint of edge Parmit.