

O.D.O.T. DISTRICT 2 SURVEY OFFICE (USE ONLY)

PERSONNEL

REFERENCE NO. 77

SHEET 40 OF 48

NOTES RHOADES

DATE 1/29/21

ROUTE SR 2

H.C. AUBLE

WEATHER CLOUDY

COUNTY OTTAWA

R.C. _____

TEMP. 30°

TOWNSHIP PORTAGE

DWG BY RHOADES PID 107959

SECTION 4
T 6 N R 17 E

TYPE MONUMENT D.N.F. - CMON W/ 1/2" IPIN

ON SURFACE - ~~BELOW~~ ON

OFFSET \varnothing PAVEMENT ON LT : RT

- TO - EDGE PAVEMENT

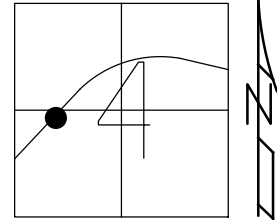
STATION: 1221+75±

HORZ.DATUM: NAD83(2011)

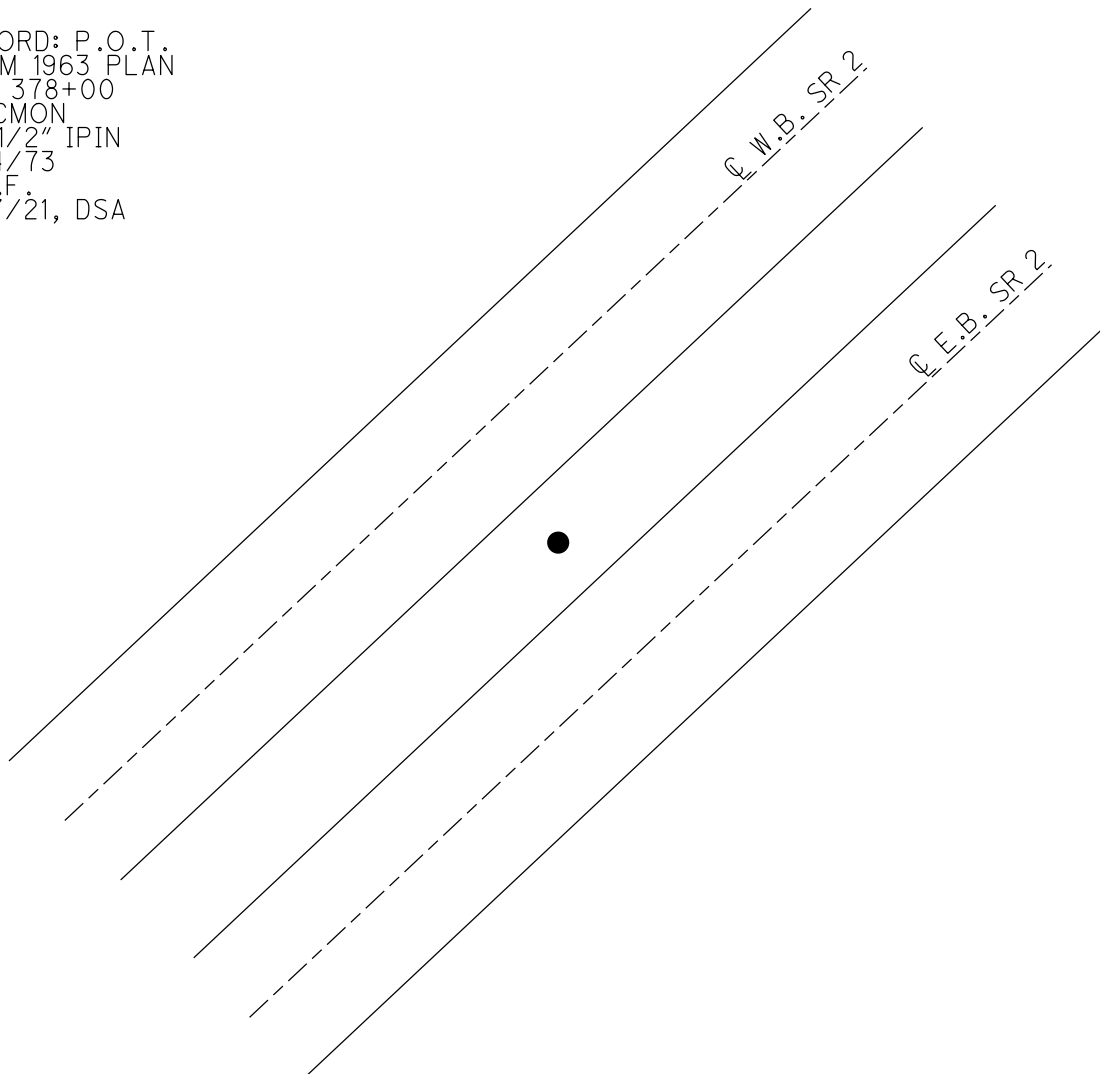
GEOID: NAVD88 2018

GRID: NORTHING: -

EASTING: -



RECORD: P.O.T.
FROM 1963 PLAN
STA 378+00
FD CMON
W/ 1/2" IPIN
1/24/73
D.N.F.
1/27/21, DSA



PERSONNEL TITLE PERSONNEL TITLE

COUNTY Ottawa DATE 1-22-73

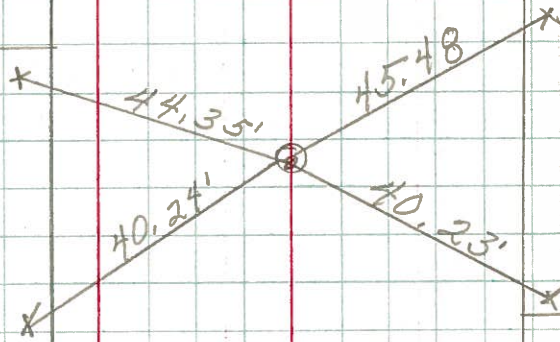
S. R. 2 WEATHER Cloudy

SEC. 19.60 TEMP. 45

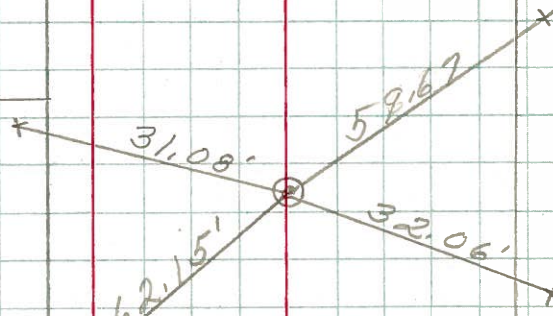
DESCRIPTION Sec-4 Portage TWP. JOB NO. _____

LEFT CENTER LINE RIGHT

P.O.C.
383+39.97
Ahead of R/W survey
1/2" Rod in
Conc. Mon.

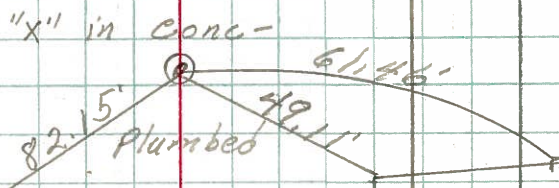


P.C.
381+39.97
1/2" Rod in
Conc. Mon.



"x" 1.0' each
way from joint
and edge Parmit.

P.O.T.
378+00
1/2" Rod in
Conc. Mon.



Bridge #2313