

O.D.O.T. DISTRICT 2 SURVEY OFFICE (USE ONLY)

PERSONNEL

REFERENCE NO. 78

SHEET 41 OF 48

NOTES RHOADES

DATE 1/29/21

ROUTE SR 2

H.C. AUBLE

WEATHER CLOUDY

COUNTY OTTAWA

R.C. \_\_\_\_\_

TEMP. 30°

TOWNSHIP PORTAGE

DWG BY RHOADES

PID 107959

SECTION 4

T 6 N R 17 E

TYPE MONUMENT 1/2" IPIN

~~ON SURFACE~~ - BELOW 6"

OFFSET  $\odot$  PAVEMENT ON LT : RT  
- TO - EDGE PAVEMENT

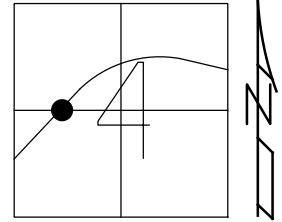
STATION: 1225+15.58

HORIZ.DATUM: NAD83(2011)

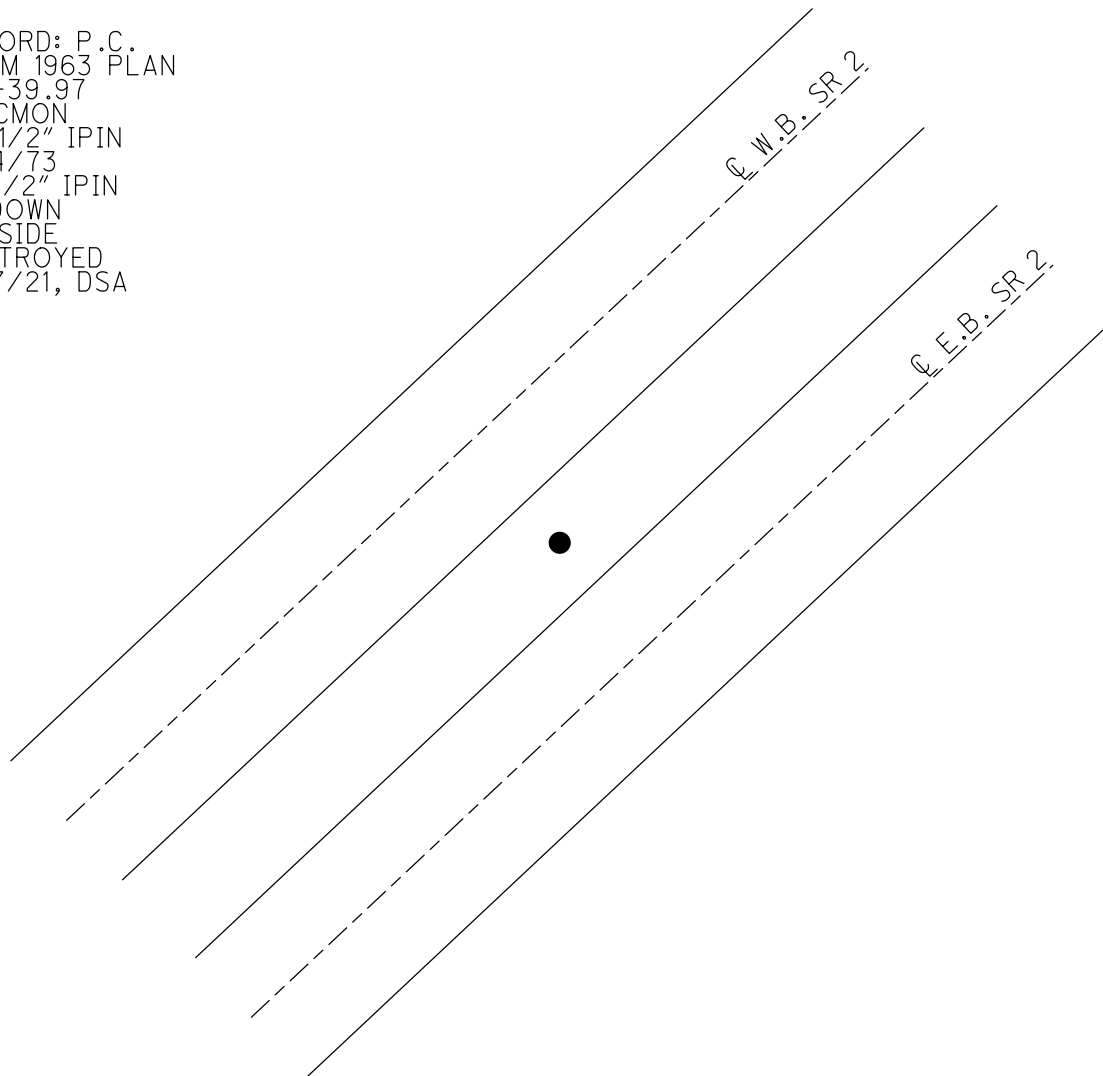
GEOID: NAVD88 2018

GRID: NORTHING: -

EASTING: -



RECORD: P.C.  
FROM 1963 PLAN  
381+39.97  
FD CMON  
W/ 1/2" IPIN  
1/24/73  
FD 1/2" IPIN  
6" DOWN  
ON SIDE  
DESTROYED  
1/27/21, DSA



PERSONNEL TITLE PERSONNEL TITLE

COUNTY Ottawa DATE 1-22-73

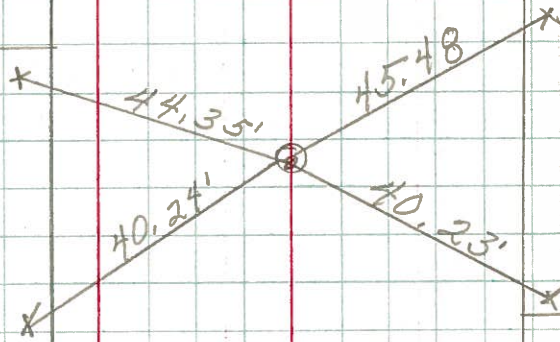
S. R. 2 WEATHER Cloudy

SEC. 19.60 TEMP. 45

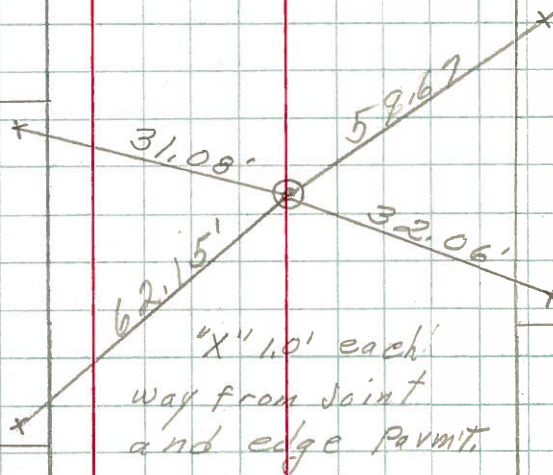
DESCRIPTION Sec-4 Portage TWP. JOB NO.

LEFT CENTER LINE RIGHT

P.O.C.  
383+39.97  
Ahead of R/W survey  
1/2" Rod in  
Conc. Mon.



P.C.  
381+39.97  
1/2" Rod in  
Conc. Mon.



P.O.T.  
378+00  
1/2" Rod in  
Conc. Mon.

