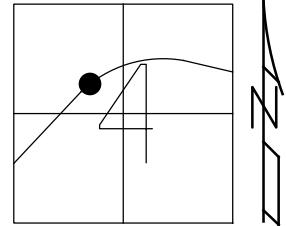


O.D.O.T. DISTRICT 2 SURVEY OFFICE (USE ONLY)

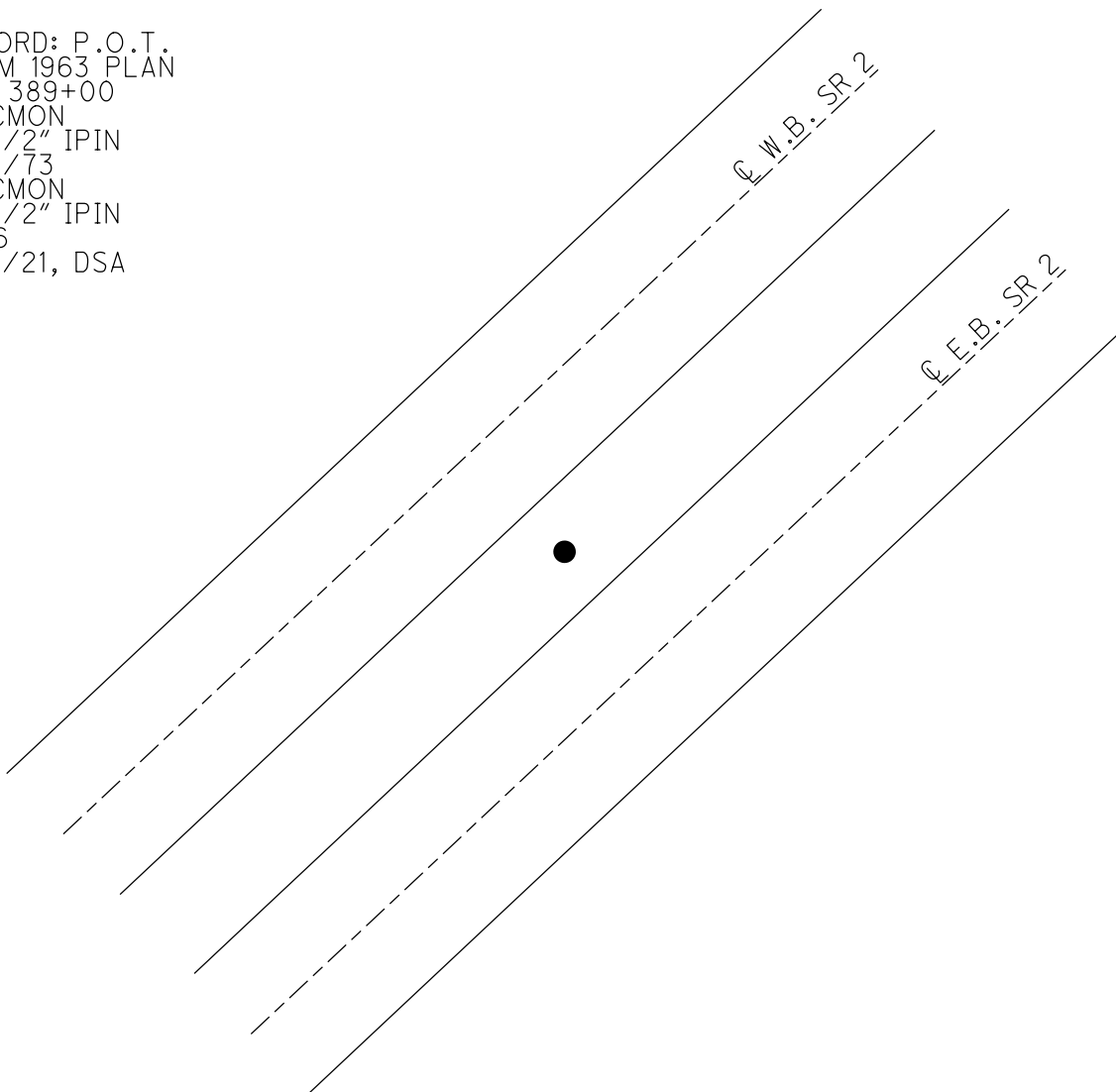
PERSONNEL _____ REFERENCE NO. 80 SHEET 40 OF 45
NOTES RHOADES DATE 1/29/21 ROUTE SR 2
H.C. AUBLE WEATHER CLOUDY COUNTY OTTAWA
R.C. _____ TEMP. 30° TOWNSHIP PORTAGE
SECTION 4
DWG BY NIESE PID 107959 T 6 N R 17 E

TYPE MONUMENT CMON W/ 1/2" IPIN
ON SURFACE - ~~BELOW~~ ON
OFFSET C PAVEMENT ON LT : RT
- TO - EDGE PAVEMENT
STATION: 1232+71.47



HORIZ.DATUM: NAD83(2011) GEOID: NAVD88 2018
GRID: NORTHING: 672228.579 EASTING: 1856860.315

RECORD: P.O.T.
FROM 1963 PLAN
STA 389+00
FD CMON
W/ 1/2" IPIN
1/24/73
FD CMON
W/ 1/2" IPIN
CL36
1/27/21, DSA



PERSONNEL TITLE PERSONNEL TITLE

Schneider

COUNTY Ottawa

DATE 1-24-73

Mosser

S. R. 2

WEATHER Fair

Barbour

SEC. 23.43

TEMP. 30°

Geyman

DESCRIPTION Sec-4 Portage Twp.

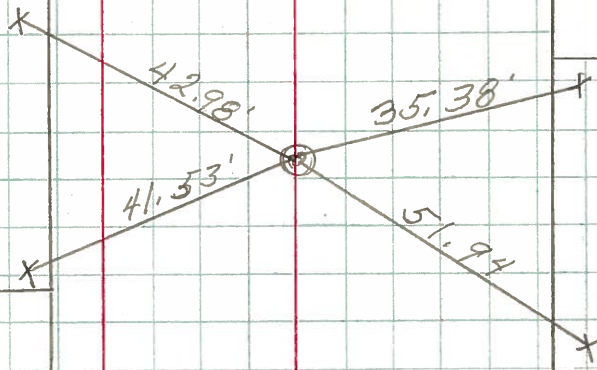
JOB NO.

LEFT

CENTER LINE

RIGHT

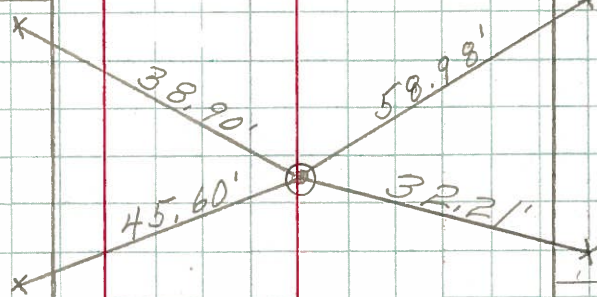
P.O.C.
403+00
1/2" Rod in
Conc-Mon.



P.O.C.
396+00
1/2" Rod in
Conc-Mon.

West Bound

East Bound



P.O.T.
389+00
1/2" Rod in
Conc-Mon.

