

O.D.O.T. DISTRICT 2 SURVEY OFFICE (USE ONLY)

PERSONNEL

REFERENCE NO. 81

SHEET 41 OF 45

NOTES RHOADES

DATE 1/29/21

ROUTE SR 2

H.C. AUBLE

WEATHER CLOUDY

COUNTY OTTAWA

R.C. _____

TEMP. 30°

TOWNSHIP PORTAGE

DWG BY NIESE PID 107959

SECTION 4

T 6 N R 16 E

TYPE MONUMENT CMON W/ 1/2" IPIN

ON SURFACE - ~~BELOW~~ ON

OFFSET ☉ PAVEMENT ON LT : RT

- TO - EDGE PAVEMENT

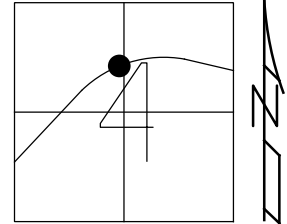
STATION: 1239+71.46

HORZ.DATUM: NAD83(2011)

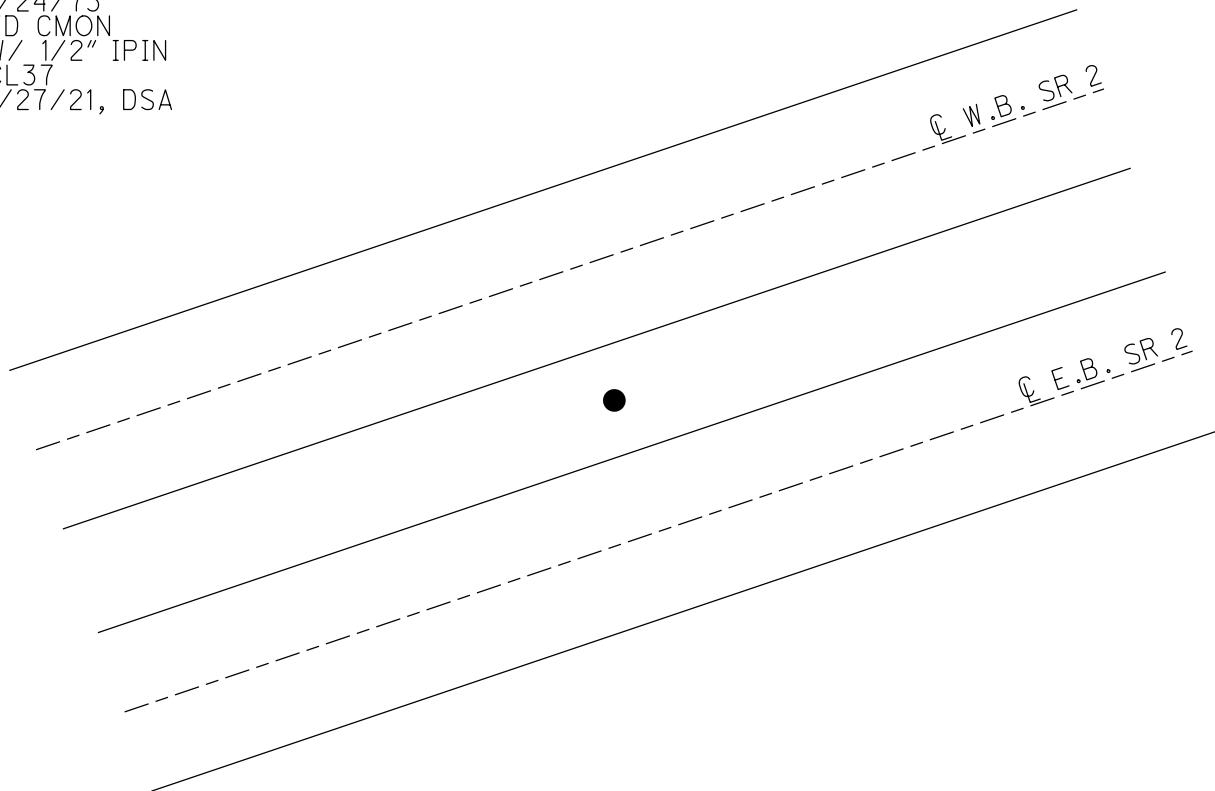
GEOID: NAVD88 2018

GRID: NORTHING: 672530.358

EASTING: 1857489.987



RECORD: P.O.C.
FROM 1963 PLAN
STA 396+00
FD CMON
W/ 1/2" IPIN
1/24/73
FD CMON
W/ 1/2" IPIN
CL37
1/27/21, DSA



PERSONNEL TITLE PERSONNEL TITLE

Schneider

COUNTY Ottawa

DATE 1-24-73

Mosser

S. R. 2

WEATHER Fair

Barbour

SEC. 23.43

TEMP. 30°

Geyman

DESCRIPTION Sec-4 Portage Twp.

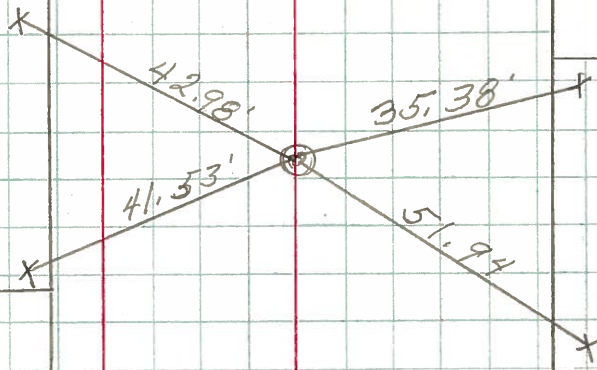
JOB NO.

LEFT

CENTER LINE

RIGHT

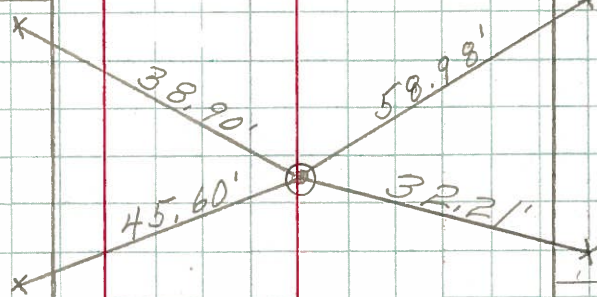
P.O.C.
403+00
1/2" Rod in
Conc-Mon.



P.O.C.
396+00
1/2" Rod in
Conc-Mon.

West Bound

East Bound



P.O.T.
389+00
1/2" Rod in
Conc-Mon.

