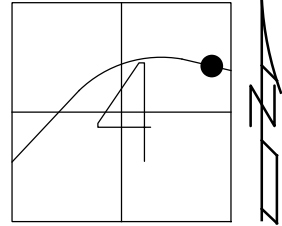


O.D.O.T. DISTRICT 2 SURVEY OFFICE (USE ONLY)

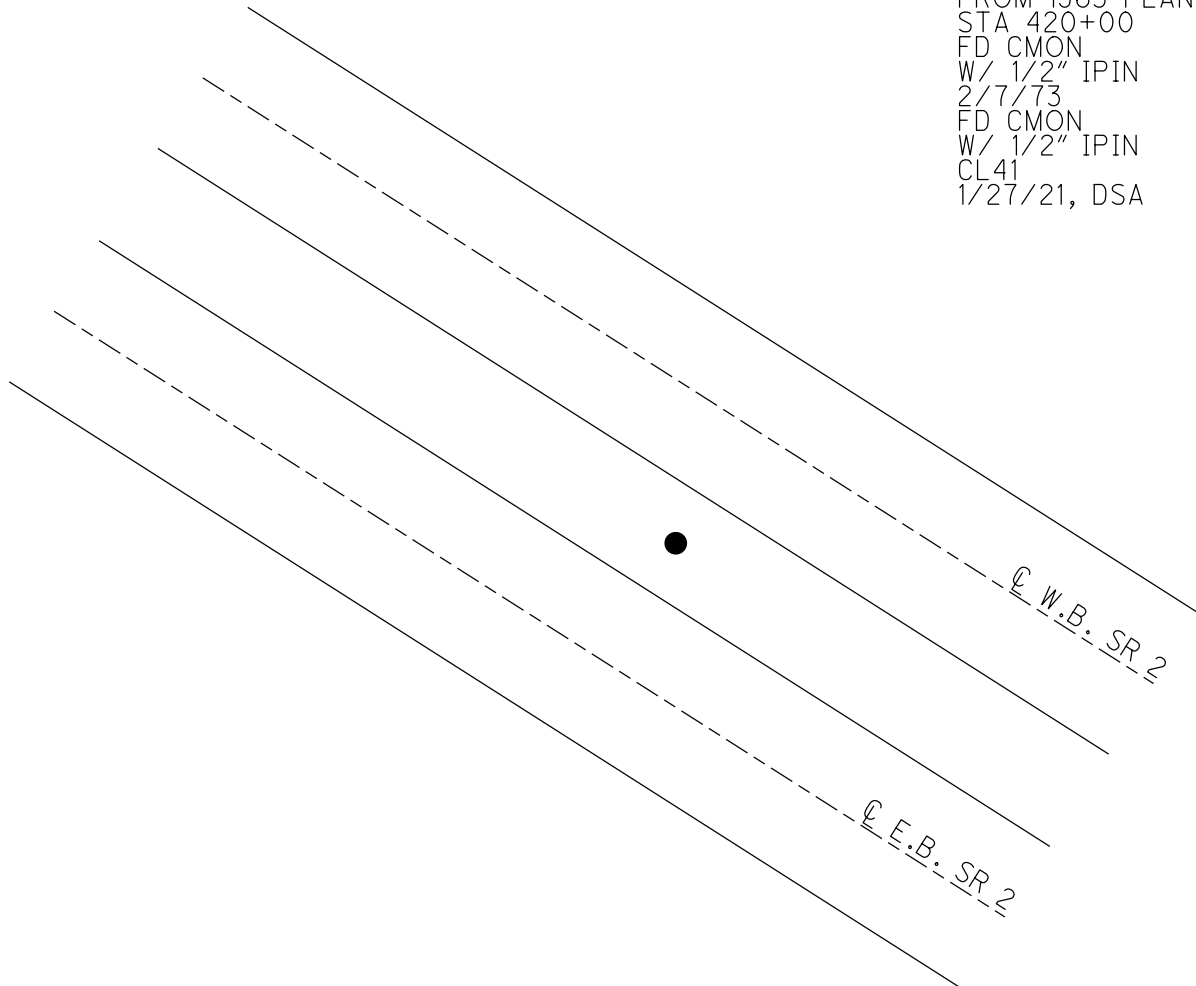
PERSONNEL _____ REFERENCE NO. 85 SHEET 45 OF 45
NOTES RHOADES DATE 1/29/21 ROUTE SR 2
H.C. AUBLE WEATHER CLOUDY COUNTY OTTAWA
R.C. _____ TEMP. 30° TOWNSHIP PORTAGE
DWG BY NIESE PID 107959 SECTION 4
T 6 N R 17 E

TYPE MONUMENT CMON W/ 1/2" IPIN
ON SURFACE - ~~BELOW~~ ON
OFFSET Q PAVEMENT ON LT : RT
- TO - EDGE PAVEMENT
STATION: 1263+72.08



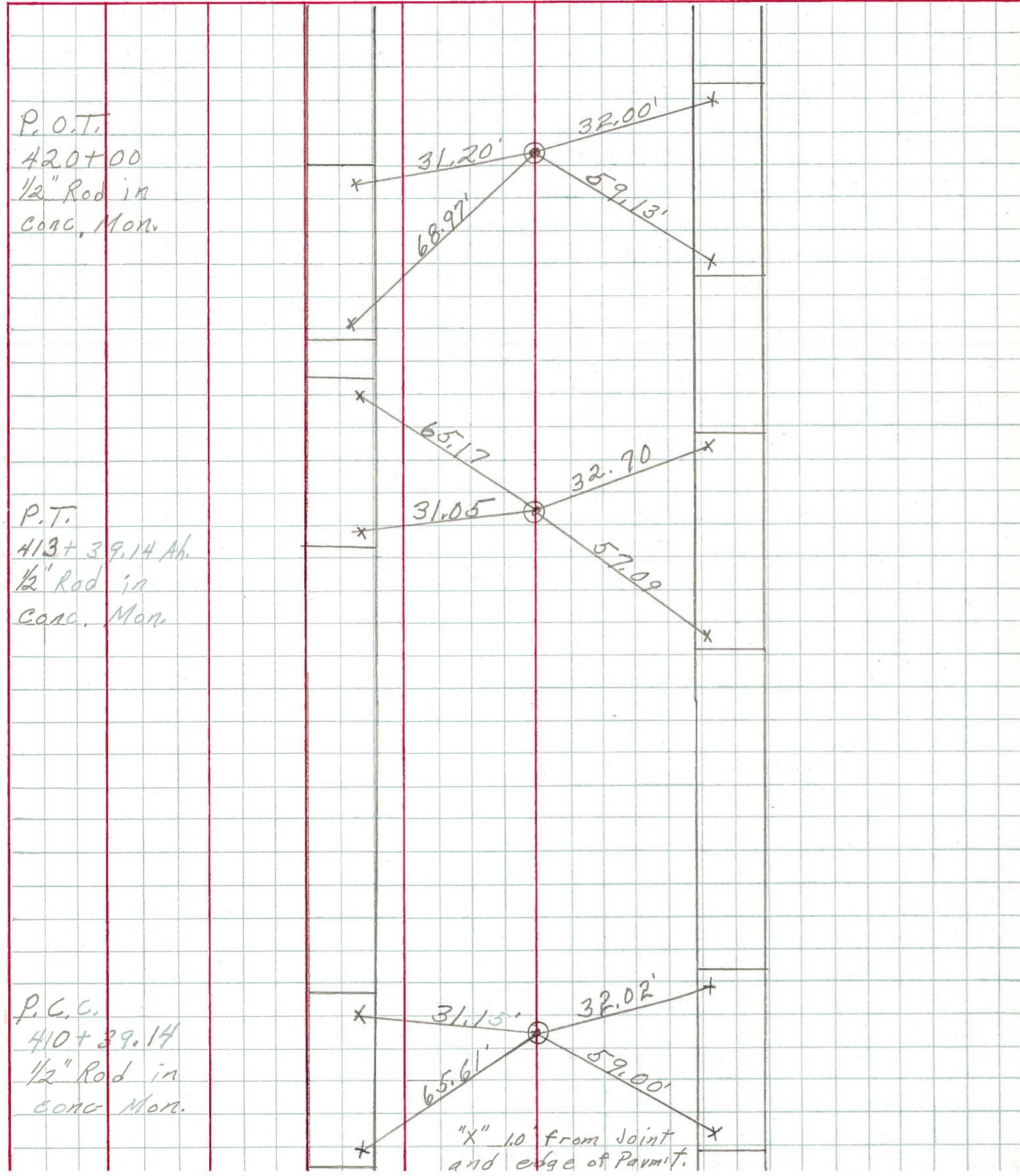
HORZ.DATUM: NAD83(2011) GEOID: NAVD88 2018
GRID: NORTHING: 672420.842 EASTING: 1859847.476

RECORD: P.O.T.
FROM 1963 PLAN
STA 420+00
FD CMON
W/ 1/2" IPIN
2/7/73
FD CMON
W/ 1/2" IPIN
CL41
1/27/21, DSA



PERSONNEL	TITLE	PERSONNEL	TITLE	COUNTY	Ottawa	DATE	2-7-73
Schnaider				S. R.	2	WEATHER	Cloudy
Mosser				SEC.	23,43	TEMP.	35°
Barbour							
Geyman							

DESCRIPTION sec 4 Portage Twp. JOB NO. _____



P.O.T.
420+00
1/2" Rod in
conc. Mon.

P.T.
413+39.14 Ab.
1/2" Rod in
conc. Mon.

P.C.C.
410+39.14
1/2" Rod in
conc. Mon.

"x" 1.0' from joint
and edge of Permit.