

O.D.O.T. DISTRICT 2 SURVEY OFFICE (USE ONLY)

PERSONNEL

REFERENCE NO. 86

SHEET 1 OF 23

NOTES NIESE DATE 2/28/22

ROUTE SR 2

H.C. O'DONNELL WEATHER CLOUDY

COUNTY OTTAWA

R.C. AUBLE TEMP. 32°

TOWNSHIP PORTAGE

DWG BY RHOADES PID 96755

SECTION 3

T 6 N R 17 E

TYPE MONUMENT P.K. NAIL - D.N.F.

~~ON SURFACE~~ - BELOW 1.0'

OFFSET Q PAVEMENT ON LT : RT

- TO - EDGE PAVEMENT

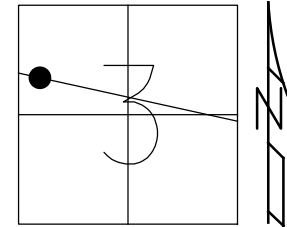
STATION: 1273+72.08

HORZ. DATUM: _____

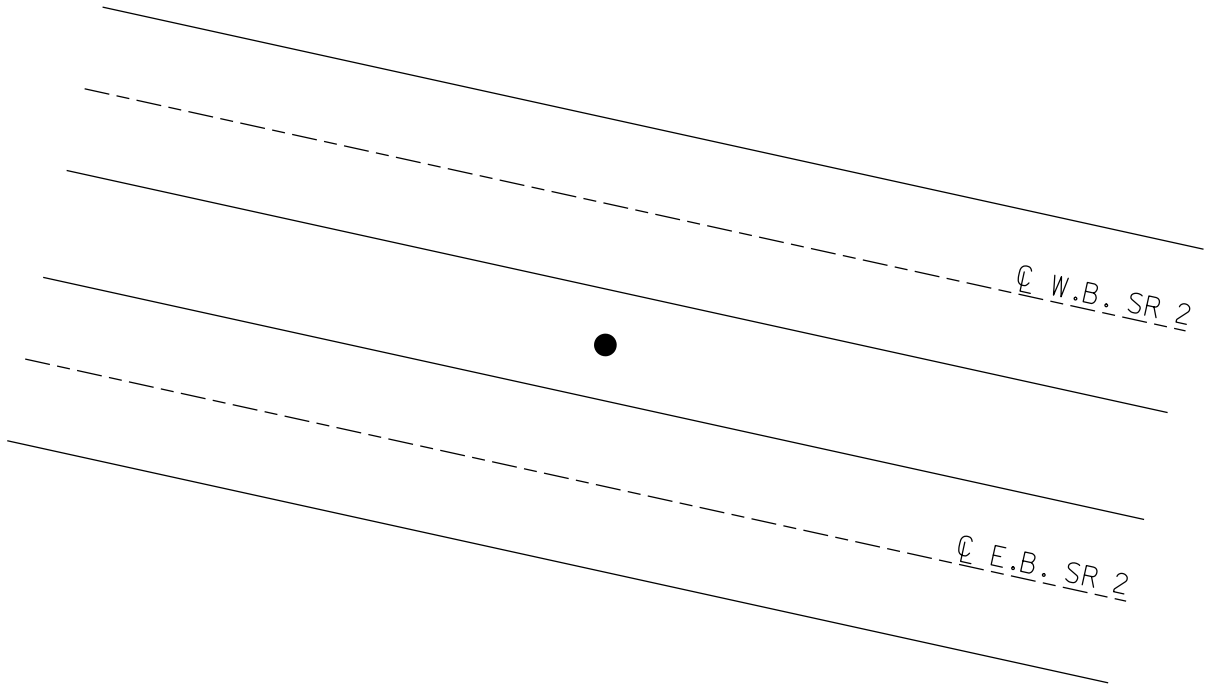
GEOID: _____

GRID: NORTHING: _____

EASTING: _____



RECORD: P.O.T.
STA 430+00
FD P.K. NAIL
1.0' DOWN
2/7/73
D.N.F.
2/28/22, JFO



PERSONNEL TITLE PERSONNEL TITLE

COUNTY Ottawa

DATE 2-773

S. R. 2

WEATHER Cloudy

SEC. 23.43

TEMP. 30°

DESCRIPTION Sec. 3 Portage Twp.

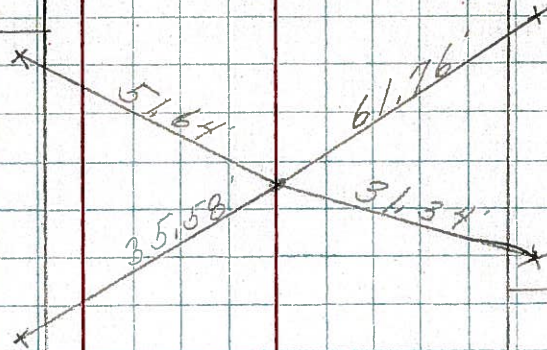
JOB NO.

LEFT

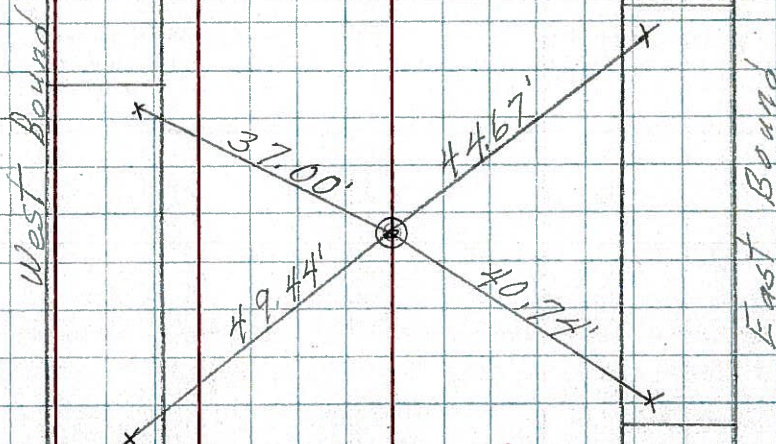
CENTER LINE

RIGHT

P.O.T.
449+00
1/2" Rod in
conc Mon.



P.O.T.
439+00
1/2" Rod in
conc Mon.



P.O.T.
430+00
PK in conc
1' down

