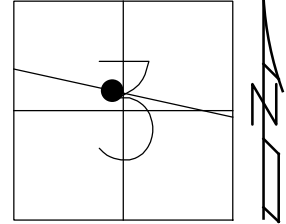


O.D.O.T. DISTRICT 2 SURVEY OFFICE (USE ONLY)

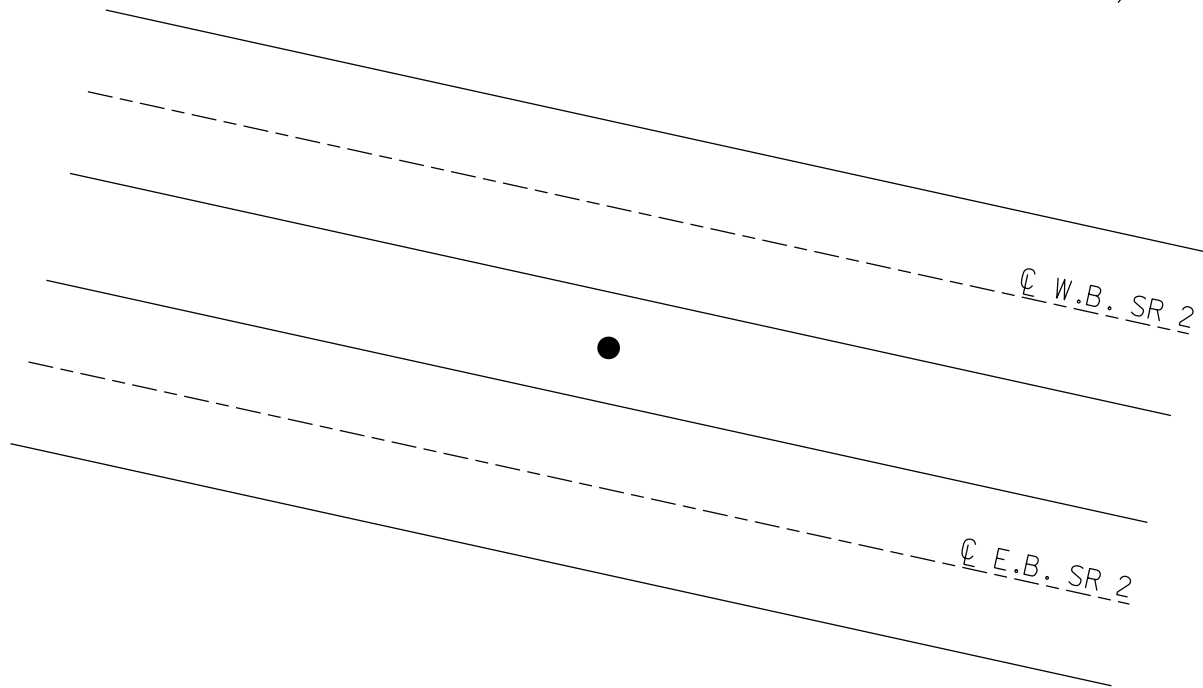
PERSONNEL \_\_\_\_\_ REFERENCE NO. 88 SHEET 3 OF 23  
NOTES NIESE DATE 2/28/22 ROUTE SR 2  
H.C. O'DONNELL WEATHER CLOUDY COUNTY OTTAWA  
R.C. AUBLE TEMP. 32° TOWNSHIP PORTAGE  
SECTION 3  
DWG BY RHOADES PID 96755 T 6 N R 17 E

TYPE MONUMENT CMON W/ 1/2" IPIN- D.N.F.  
ON SURFACE - ~~BELOW~~ ON  
OFFSET Q PAVEMENT ON LT : RT  
- TO - EDGE PAVEMENT  
STATION: 1292+72.08



HORZ.DATUM: \_\_\_\_\_ GEOID: \_\_\_\_\_  
GRID: NORTHING: \_\_\_\_\_ EASTING: \_\_\_\_\_

RECORD: P.O.T.  
STA 449+00  
FD CMON  
W/1/2" IPIN  
2/7/73  
D.N.F.  
2/28/22, JFO



O.D.O.T. DISTRICT 2 SURVEY OFFICE (USE ONLY)

PERSONNEL

REFERENCE NO. 88

SHEET 3 OF 18

NOTES SCHNEIDER

DATE 2/7/73

ROUTE SR 2

H.C. MOSSER

WEATHER CLOUDY

COUNTY OTTAWA

R.C. BARBOUR

TEMP. 30°

TOWNSHIP PORTAGE

GEYMAN

SECTION 3

DWG BY NIESE

PID \_\_\_\_\_

T 6 N R 17 E

TYPE MONUMENT CMON W/ 1/2" IPIN

ON SURFACE - ~~BELOW~~ ON

OFFSET ☉ PAVEMENT ON LT : RT

- TO - EDGE PAVEMENT

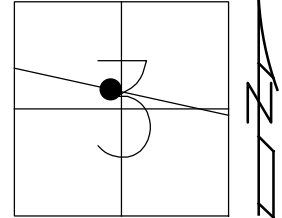
STATION: 1292+72.08

HORZ.DATUM: \_\_\_\_\_

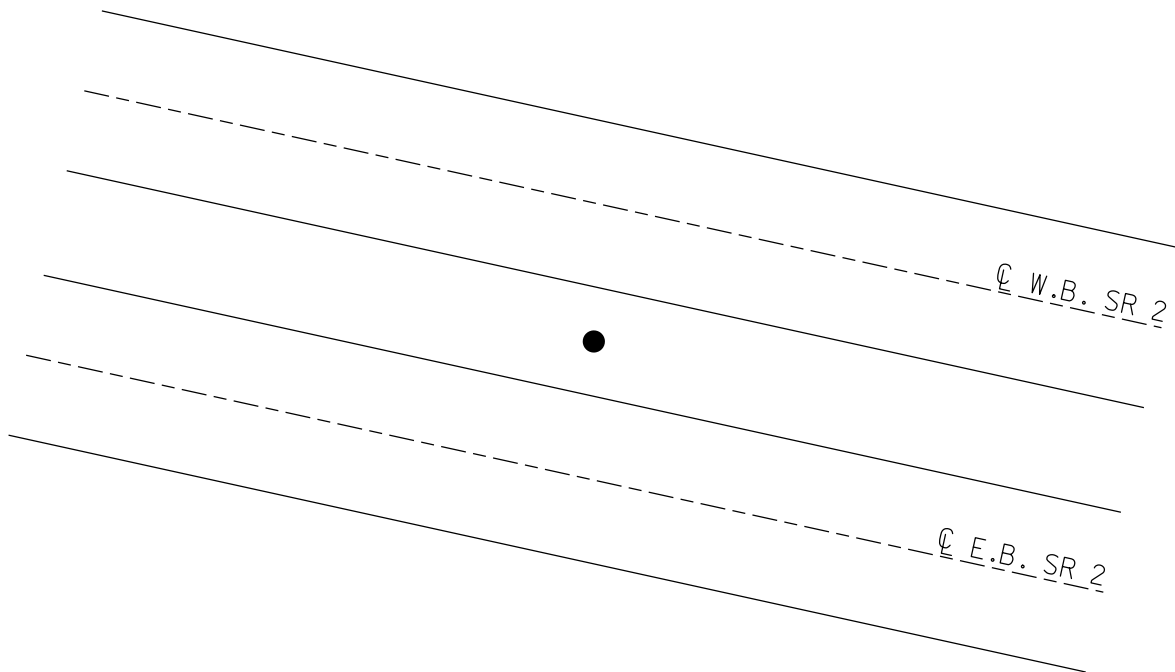
GEOID: \_\_\_\_\_

GRID: NORTHING: \_\_\_\_\_

EASTING: \_\_\_\_\_



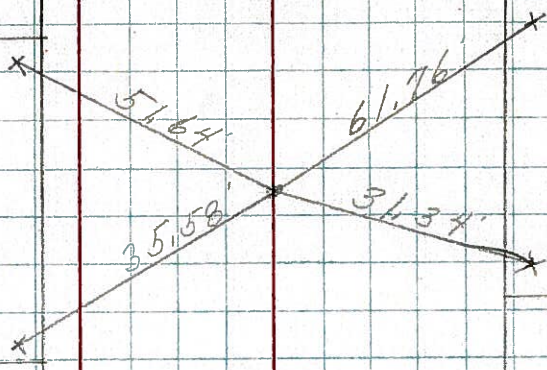
RECORD: P.O.T.  
STA 449+00  
FD CMON  
W/1/2" IPIN  
2/7/73



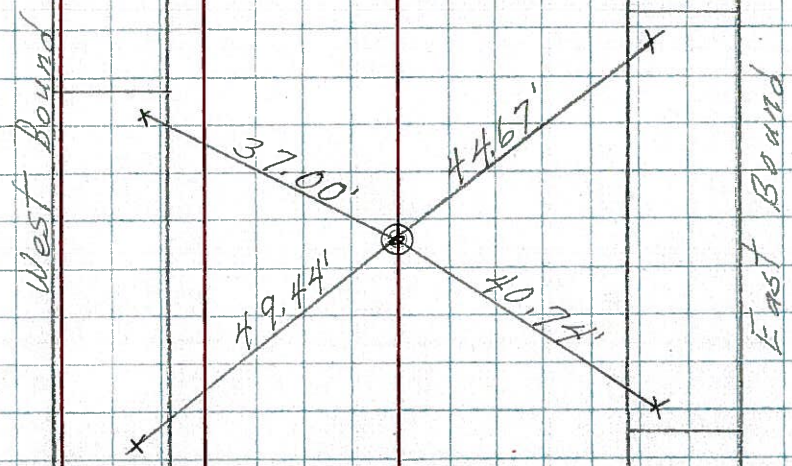
PERSONNEL	TITLE	PERSONNEL	TITLE	COUNTY	DATE
				Ottawa	2-773
				S. R. 2	WEATHER Cloudy
				SEC. 23, 43	TEMP 30°
DESCRIPTION	Sec. 3 Portage Twp.			JOB NO.	
	LEFT	CENTER LINE	RIGHT		



P.O.T.  
449+00  
1/2" Rod in  
conc. Man.



P.O.T.  
439+00  
1/2" Rod in  
conc. Man.



P.O.T.  
430+00  
P.K. in conc-  
1' down

