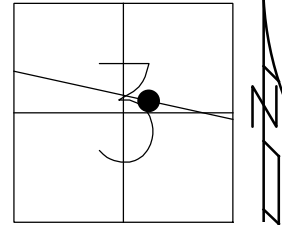


O.D.O.T. DISTRICT 2 SURVEY OFFICE (USE ONLY)

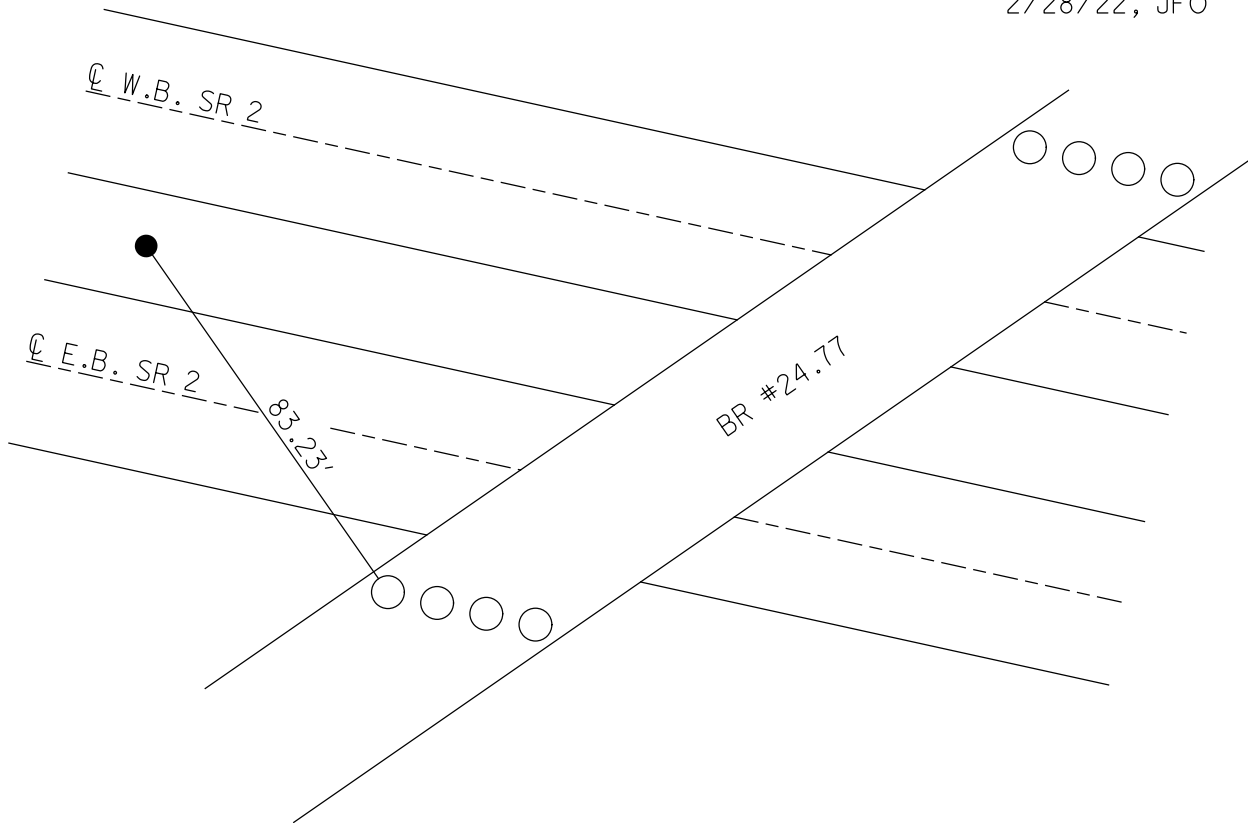
PERSONNEL \_\_\_\_\_ REFERENCE NO. 89 SHEET 4 OF 23  
NOTES NIESE DATE 2/28/22 ROUTE SR 2  
H.C. O'DONNELL WEATHER CLOUDY COUNTY OTTAWA  
R.C. AUBLE TEMP. 32° TOWNSHIP PORTAGE  
SECTION 3  
DWG BY RHOADES PID 96755 T 6 N R 17 E

TYPE MONUMENT CMON W/ 1/2" IPIN  
~~ON SURFACE~~ - BELOW 3"  
OFFSET  $\odot$  PAVEMENT ON LT : RT  
- TO - EDGE PAVEMENT  
STATION: 1301+69.69



HORZ.DATUM: NAD83 2011 GEOID: NAVD88 2018  
GRID: NORTHING: 671555.214 EASTING: 1863545.115

RECORD: P.O.T.  
STA 458+00  
FD CMON  
W/1/2" IPIN  
2/7/73  
FD CMON  
W/1/2" IPIN  
3" DOWN  
REF89  
2/28/22, JFO



O.D.O.T. DISTRICT 2 SURVEY OFFICE (USE ONLY)

PERSONNEL

REFERENCE NO. 89

SHEET 4 OF 18

NOTES SCHNEIDER

DATE 2/7/73

ROUTE SR 2

H.C. MOSSER

WEATHER CLOUDY

COUNTY OTTAWA

R.C. BARBOUR

TEMP. 30°

TOWNSHIP PORTAGE

GEYMAN

SECTION 3

DWG BY NIESE PID \_\_\_\_\_

T 6 N R 17 E

TYPE MONUMENT CMON W/ 1/2" IPIN

ON SURFACE - ~~BELOW~~ ON

OFFSET ☉ PAVEMENT ON LT : RT

- TO - EDGE PAVEMENT

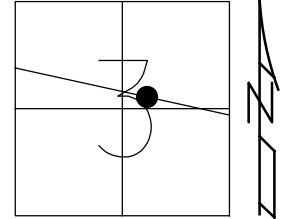
STATION: 1301+72.08

HORZ.DATUM: \_\_\_\_\_

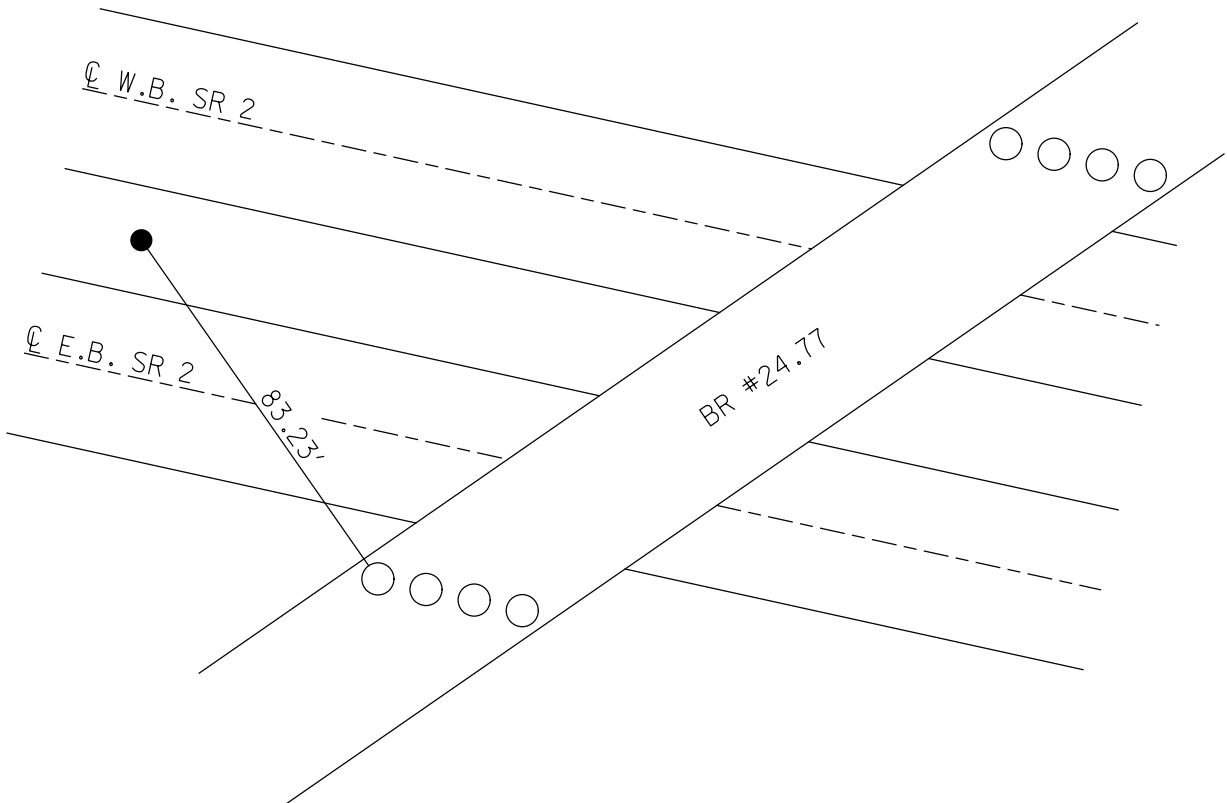
GEOID: \_\_\_\_\_

GRID: NORTHING: \_\_\_\_\_

EASTING: \_\_\_\_\_



RECORD: P.O.T.  
STA 458+00  
FD CMON  
W/1/2" IPIN  
2/7/73





PERSONNEL TITLE PERSONNEL TITLE

COUNTY Ottawa DATE 2-7-73

S. R. 2 WEATHER Cloudy

SEC. 23.43 TEMP. 30°

DESCRIPTION Sec 3 Portage Twp. JOB NO.

