

O.D.O.T. DISTRICT 2 SURVEY OFFICE (USE ONLY)

PERSONNEL

REFERENCE NO. 90

SHEET 5 OF 23

NOTES NIESE

DATE 2/28/22

ROUTE SR 2

H.C. O'DONNELL

WEATHER CLOUDY

COUNTY OTTAWA

R.C. AUBLE

TEMP. 32°

TOWNSHIP PORTAGE

DWG BY RHOADES PID 96755

SECTION 3

T 6 N R 17 E

TYPE MONUMENT CMON W/ 1/2" IPIN

~~ON SURFACE~~ - BELOW 3"

OFFSET Q PAVEMENT ON LT : RT

- TO - EDGE PAVEMENT

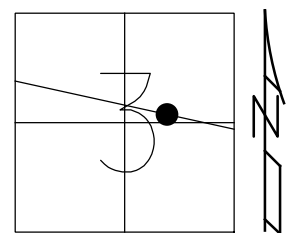
STATION: 1305+69.82

HORIZ.DATUM: NAD83 2011

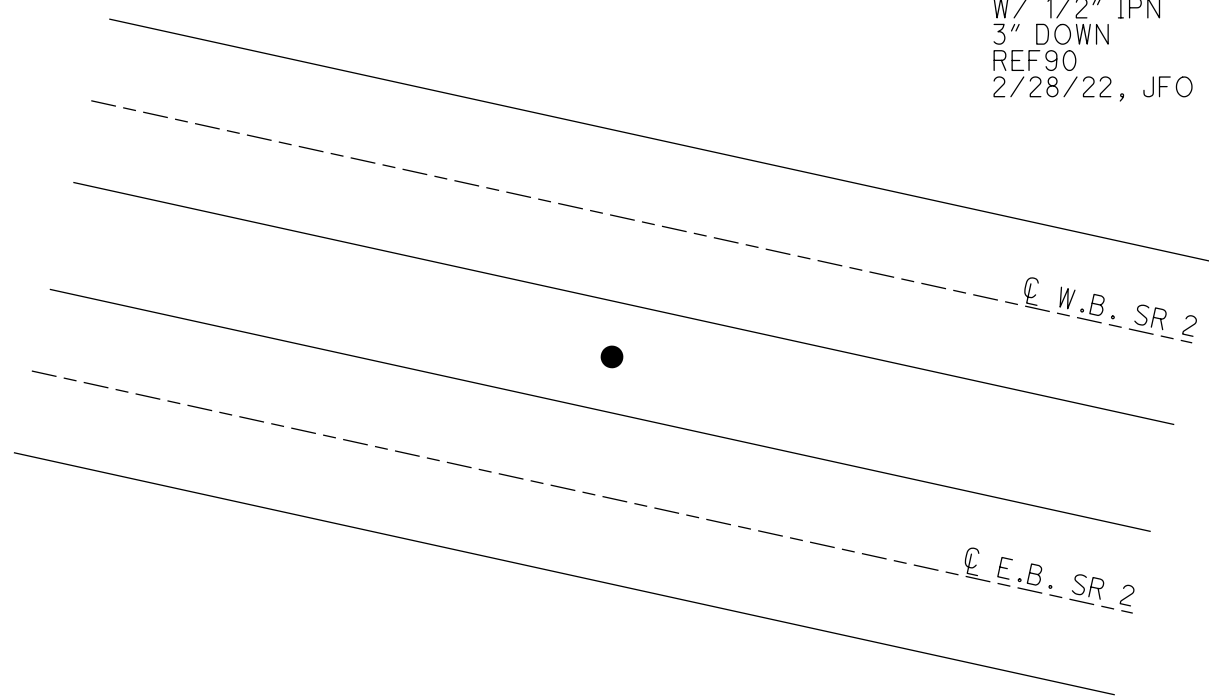
GEOID: NAVD88 2018

GRID: NORTHING: 671463.977

EASTING: 1863934.706



RECORD: P.O.T.
STA 462+00
FD CMON
W/1/2" IPIN
2/7/73
FD CMON
W/ 1/2" IPN
3" DOWN
REF90
2/28/22, JFO



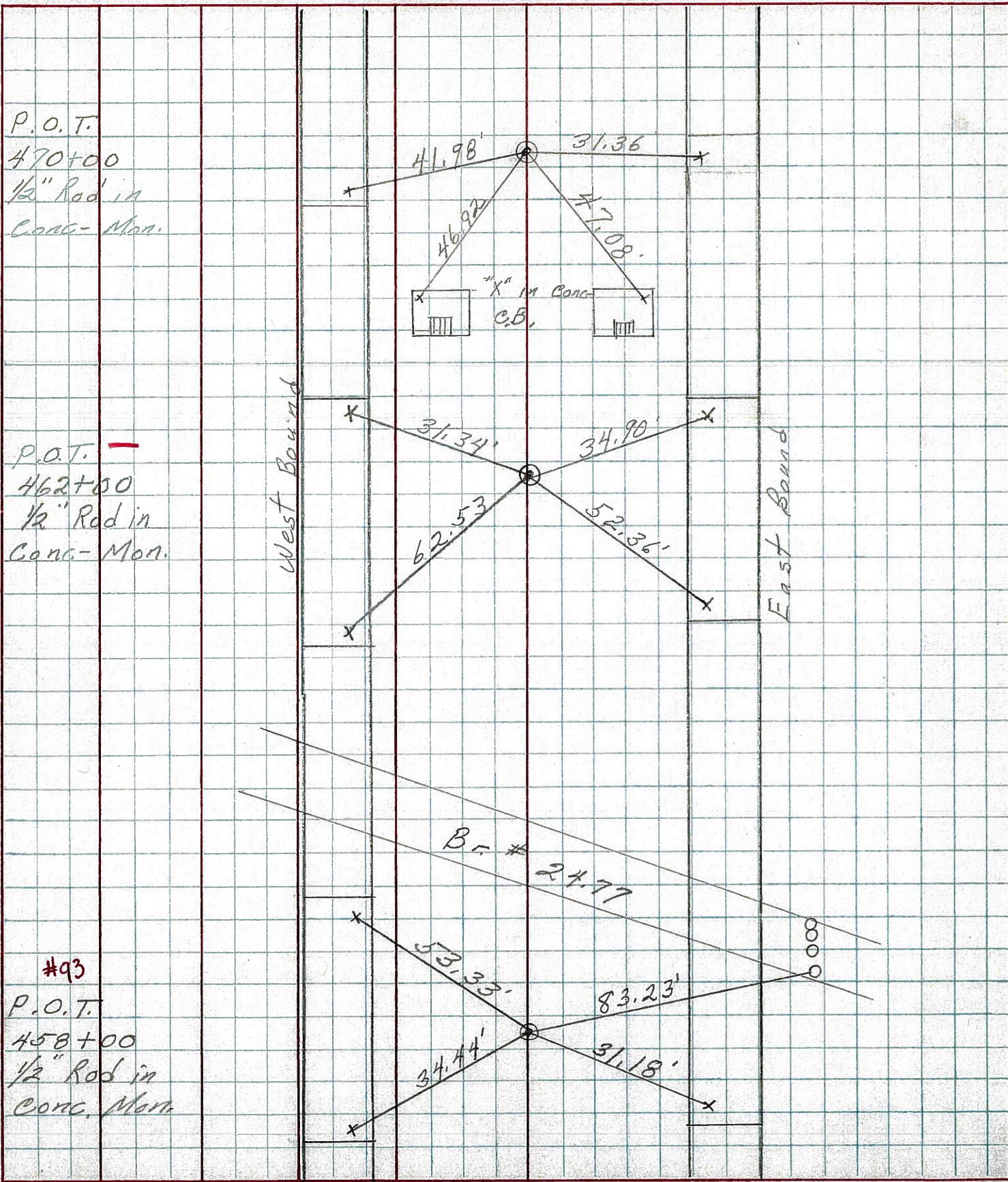
PERSONNEL TITLE PERSONNEL TITLE

COUNTY Ottawa DATE 2-7-73

S. R. 2 WEATHER Cloudy

SEC. 23.43 TEMP. 30°

DESCRIPTION Sec 3 Portage Twp. JOB NO.



P.O.T.
470+00
1/2" Rod in
Conc. Mon.

P.O.T. -
462+00
1/2" Rod in
Conc. Mon.

#93
P.O.T.
458+00
1/2" Rod in
Conc. Mon.

West Bound

East Bound

Br # 24.77