

O.D.O.T. DISTRICT 2 SURVEY OFFICE (USE ONLY)

PERSONNEL

REFERENCE NO. 91

SHEET 6 OF 23

NOTES NIESE DATE 2/28/22
H.C. O'DONNELL WEATHER CLOUDY
R.C. AUBLE TEMP. 32°

ROUTE SR 2
COUNTY OTTAWA
TOWNSHIP PORTAGE
SECTION 3
T 6 N R 17 E

DWG BY RHOADES PID 96755

TYPE MONUMENT CMON W/ 1/2" IPIN

~~ON SURFACE~~ - BELOW 3"

OFFSET Q PAVEMENT ON LT : RT

- TO - EDGE PAVEMENT

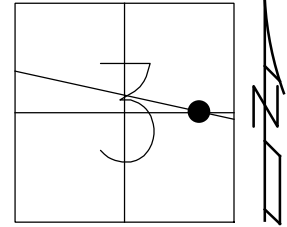
STATION: 1313+69.96

HORZ.DATUM: NAD83 2011

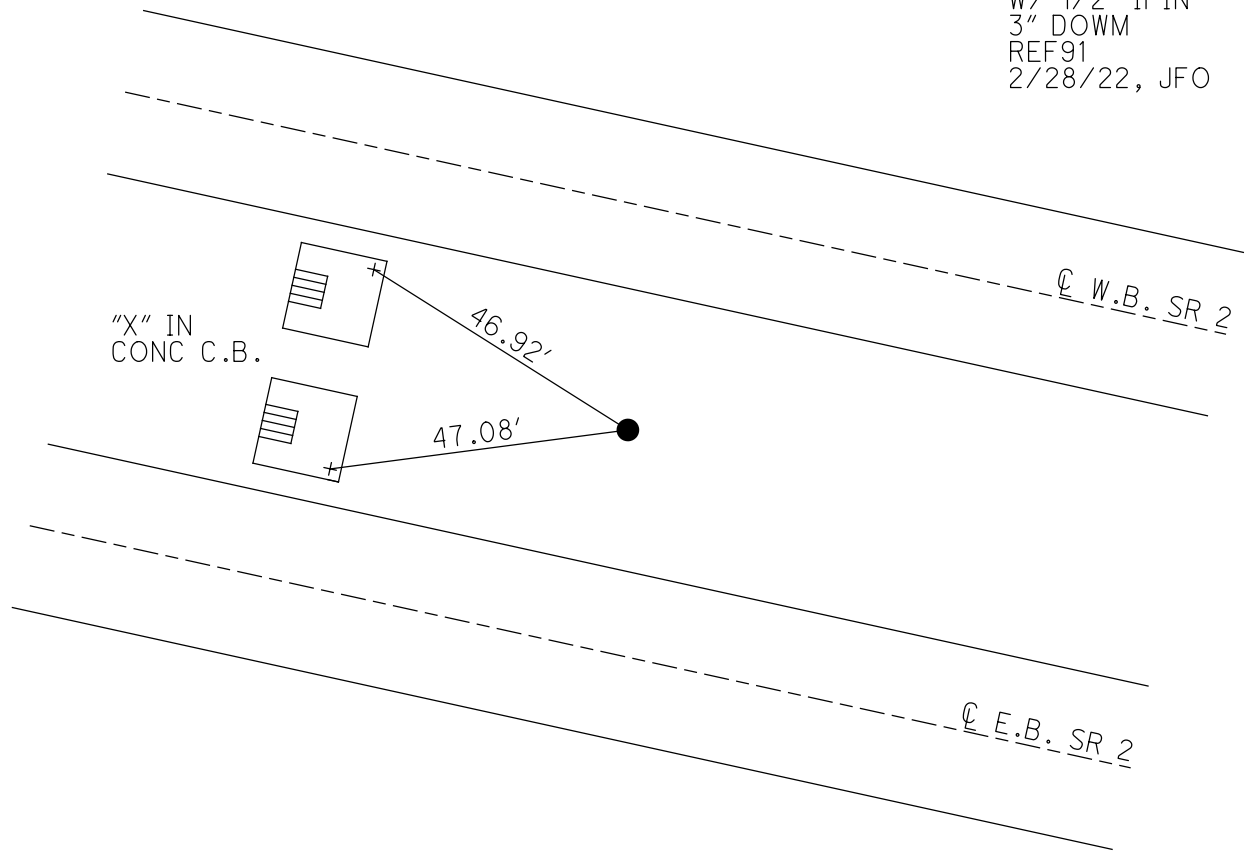
GEOID: NAVD88 2018

GRID: NORTHING: 671281.668

EASTING: 1864713.799



RECORD: P.O.T.
STA 470+00
FD CMON
W/1/2" IPIN
2/7/73
FD CMON
W/ 1/2" IPIN
3" DOWM
REF91
2/28/22, JFO



O.D.O.T. DISTRICT 2 SURVEY OFFICE (USE ONLY)

PERSONNEL

REFERENCE NO. 91

SHEET 6 OF 18

NOTES SCHNEIDER

DATE 2/7/73

ROUTE SR 2

H.C. MOSSER

WEATHER CLOUDY

COUNTY OTTAWA

R.C. BARBOUR

TEMP. 30°

TOWNSHIP PORTAGE

GEYMAN

SECTION 3

DWG BY NIESE

PID _____

T 6 N R 17 E

TYPE MONUMENT CMON W/ 1/2" IPIN

ON SURFACE - ~~BELOW~~ ON

OFFSET \odot PAVEMENT ON LT : RT

- TO - EDGE PAVEMENT

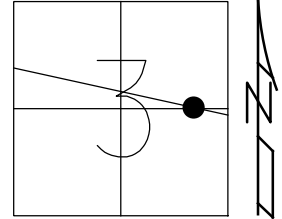
STATION: 1313+72.08

HORZ.DATUM: _____

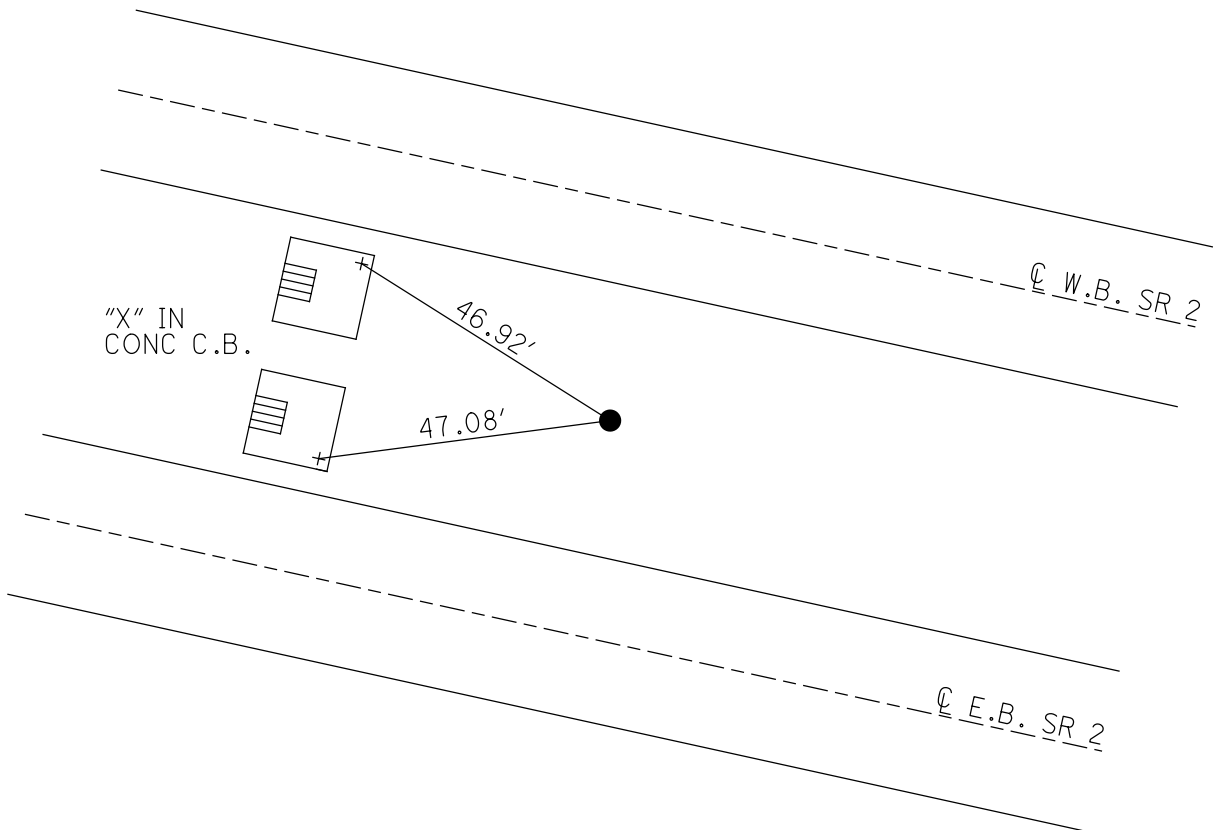
GEOID: _____

GRID: NORTHING: _____

EASTING: _____



RECORD: P.O.T.
STA 470+00
FD CMON
W/1/2" IPIN
2/7/73



PERSONNEL TITLE PERSONNEL TITLE

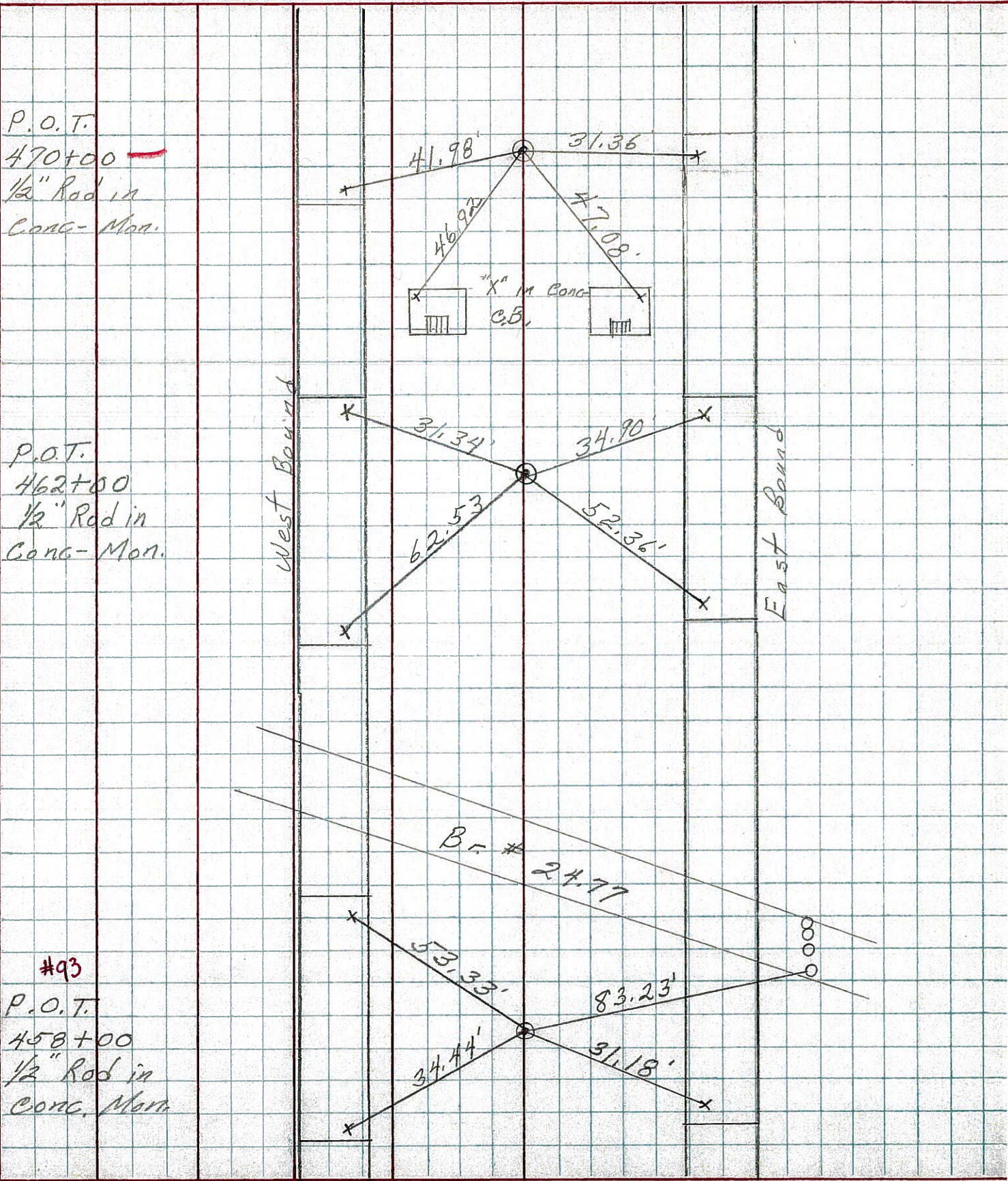
COUNTY Ottawa DATE 2-7-73

S. R. 2 WEATHER Cloudy

SEC. 23, 43 TEMP. 30°

DESCRIPTION Sec 3 Portage Twp. JOB NO.

LEFT CENTER LINE RIGHT



* P.O.T.
 470+00 —
 1/2" Rod in
 Conc-Mon.

* P.O.T.
 462+00
 1/2" Rod in
 Conc-Mon.

#93
 P.O.T.
 458+00
 1/2" Rod in
 Conc-Mon.

West Bound

East Bound

Br # 24.77