

O.D.O.T. DISTRICT 2 SURVEY OFFICE (USE ONLY)

PERSONNEL

REFERENCE NO. 92

SHEET 7 OF 23

NOTES NIESE

DATE 2/28/22

ROUTE SR 2

H.C. O'DONNELL

WEATHER COLD

COUNTY OTTAWA

R.C. AUBLE

TEMP. 32°

TOWNSHIP PORTAGE

SECTION 2

DWG BY RHOADES PID 96755

T 6 N R 17 E

TYPE MONUMENT CMON W/ ODOT DISC

ON SURFACE - ~~BELOW~~ ON

OFFSET Q PAVEMENT ON LT : RT

- TO - EDGE PAVEMENT

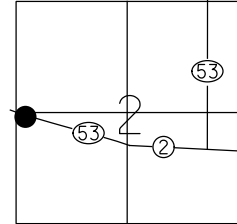
STATION: 1323+70.03

HORZ.DATUM: NAD83 2011

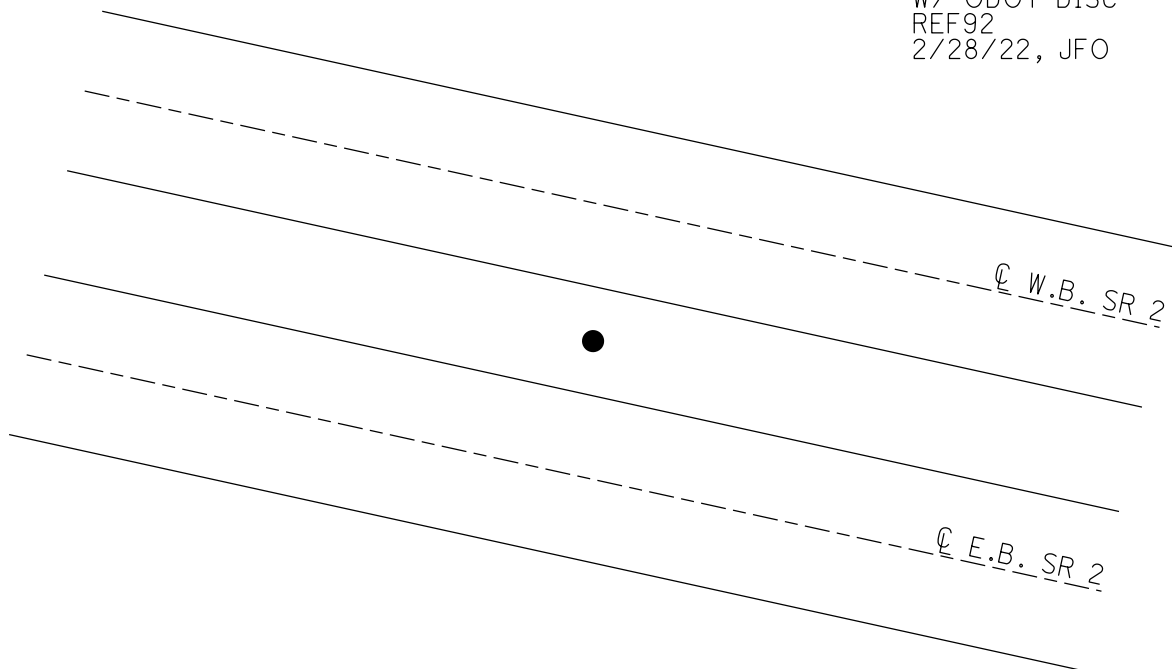
GEOID: NAVD88 2018

GRID: NORTHING: 671053.789

EASTING: 1865687.560



RECORD: P.O.T.  
STA 480+00  
FD CMON  
W/1/2" IPIN  
2/13/73, SCHNEIDER  
FD CMON  
W/ ODOT DISC  
REF92  
2/28/22, JFO



O.D.O.T. DISTRICT 2 SURVEY OFFICE (USE ONLY)

PERSONNEL

REFERENCE NO. 92

SHEET 7 OF 18

NOTES SCHNEIDER

DATE 2/13/73

ROUTE SR 2

H.C. MOSSER

WEATHER COLD

COUNTY OTTAWA

R.C. BARBOUR

TEMP. 20°

TOWNSHIP PORTAGE

GEYMAN

SECTION 2

DWG BY NIESE PID \_\_\_\_\_

T 6 N R 17 E

TYPE MONUMENT CMON W/ 1/2" IPIN

ON SURFACE - ~~BELOW~~ ON

OFFSET ☉ PAVEMENT ON LT : RT

- TO - EDGE PAVEMENT

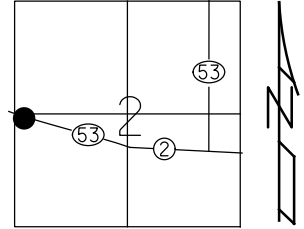
STATION: 1323+72.08

HORZ.DATUM: \_\_\_\_\_

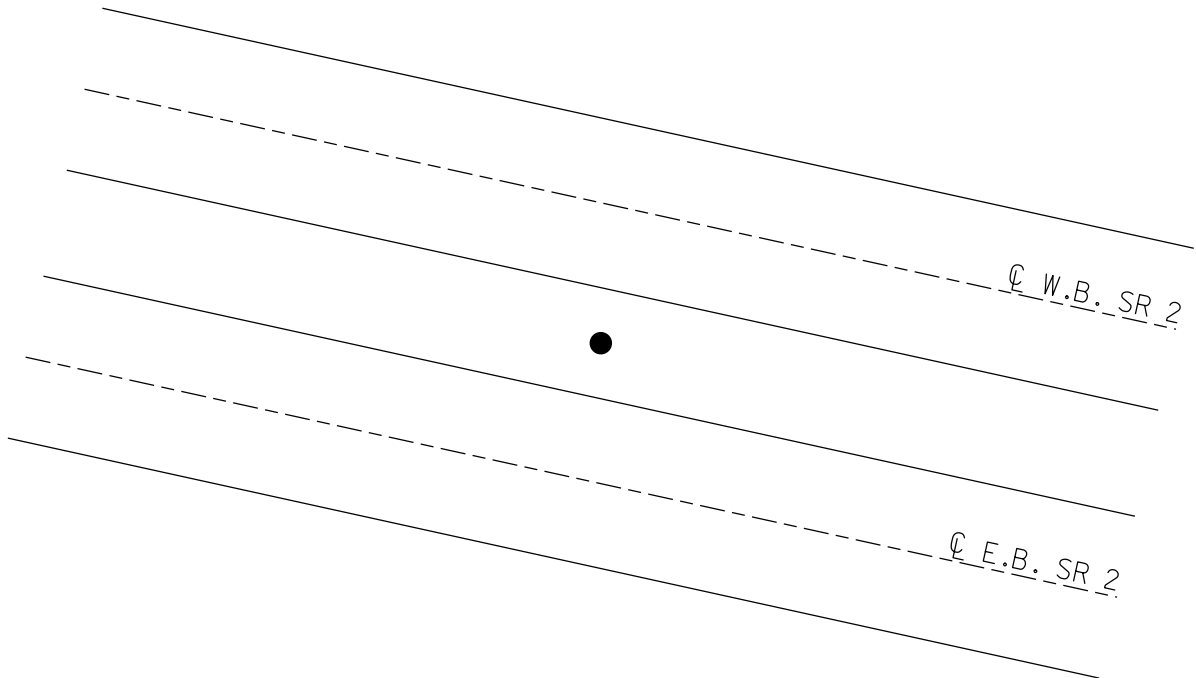
GEOID: \_\_\_\_\_

GRID: NORTHING: \_\_\_\_\_

EASTING: \_\_\_\_\_



RECORD: P.O.T.  
STA 480+00  
FD CMON  
W/1/2" IPIN  
2/13/73, SCHNEIDER



PERSONNEL TITLE PERSONNEL TITLE  
 Schneider \_\_\_\_\_  
 Mosser \_\_\_\_\_  
 Barbour \_\_\_\_\_  
 Geyman \_\_\_\_\_

COUNTY Ottawa DATE 2-13-73  
 S. R. 2 WEATHER cold  
 SEC. 23.43 TEMP. 20°

DESCRIPTION Sec 2 Portage Twp. JOB NO. \_\_\_\_\_  
 LEFT CENTER LINE RIGHT

