

O.D.O.T. DISTRICT 2 SURVEY OFFICE (USE ONLY)

PERSONNEL

REFERENCE NO. 93

SHEET 8 OF 23

NOTES NIESE

DATE 2/28/22

ROUTE SR 2

H.C. O'DONNELL

WEATHER CLOUDY

COUNTY OTTAWA

R.C. AUBLE

TEMP. 32°

TOWNSHIP PORTAGE

DWG BY RHOADES

PID 96755

SECTION 2

T 6 N R 17 E

TYPE MONUMENT CMON W/ ODOT DISC

ON SURFACE - ~~BELOW~~ ON

OFFSET 0 PAVEMENT ON LT : RT

- TO - EDGE PAVEMENT

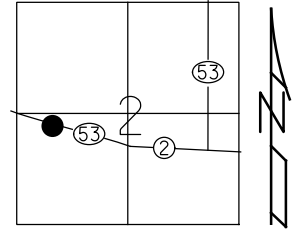
STATION: 1330+69.13

HORZ.DATUM: NAD83 2011

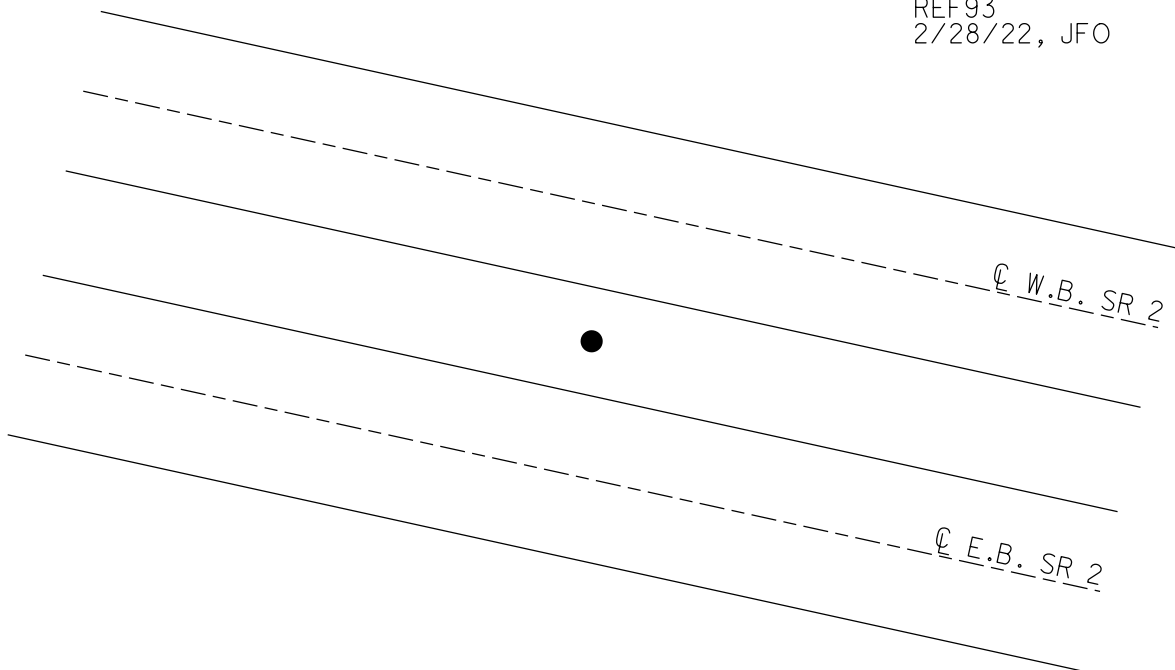
GEOID: NAVD88 2018

GRID: NORTHING: 670894.486

EASTING: 1866368.267



RECORD: P.O.T.  
STA 487+00  
FD CMON  
W/1/2" IPIN  
2/13/73, SCHNEIDER  
FD CMON  
W/ ODOT DISC  
REF93  
2/28/22, JFO



O.D.O.T. DISTRICT 2 SURVEY OFFICE (USE ONLY)

PERSONNEL

REFERENCE NO. 93

SHEET 8 OF 18

NOTES SCHNEIDER

DATE 2/13/73

ROUTE SR 2

H.C. MOSSER

WEATHER COLD

COUNTY OTTAWA

R.C. BARBOUR

TEMP. 20°

TOWNSHIP PORTAGE

GEYMAN

SECTION 2

DWG BY NIESE

PID \_\_\_\_\_

T 6 N R 17 E

TYPE MONUMENT CMON W/ 1/2" IPIN

ON SURFACE - ~~BELOW~~ ON

OFFSET ☉ PAVEMENT ON LT : RT

- TO - EDGE PAVEMENT

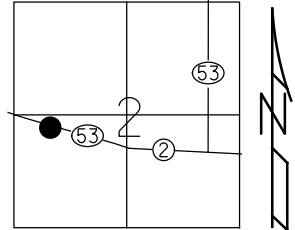
STATION: 1330+72.08

HORZ. DATUM: \_\_\_\_\_

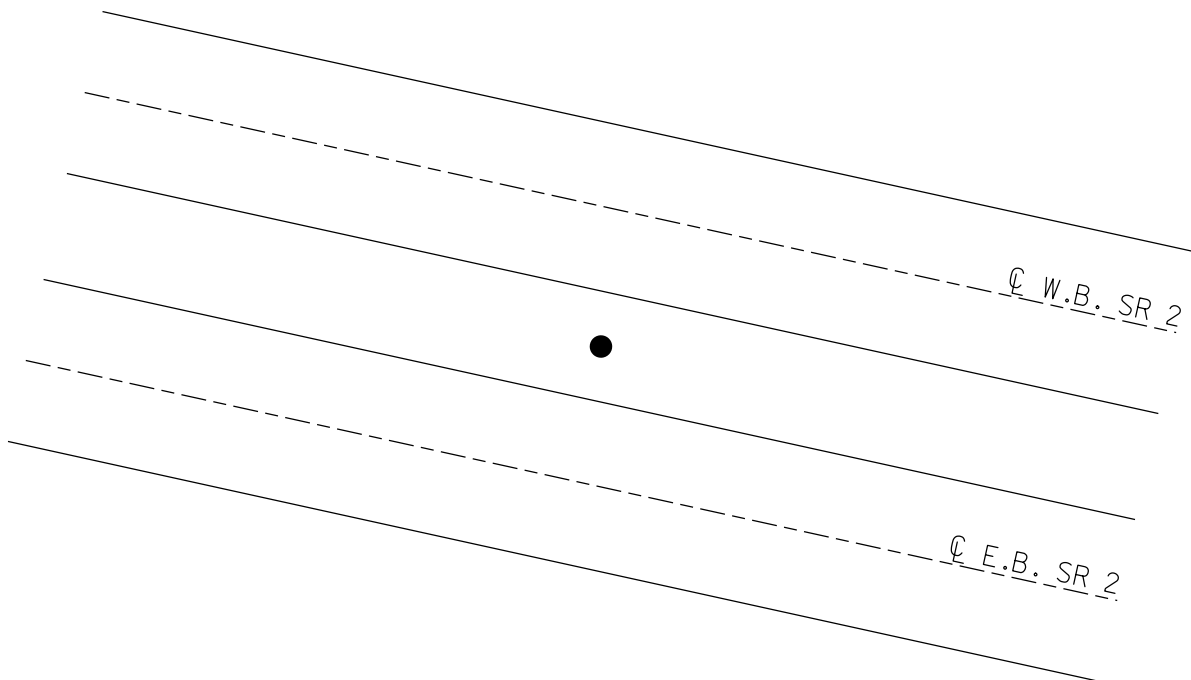
GEOID: \_\_\_\_\_

GRID: NORTHING: \_\_\_\_\_

EASTING: \_\_\_\_\_

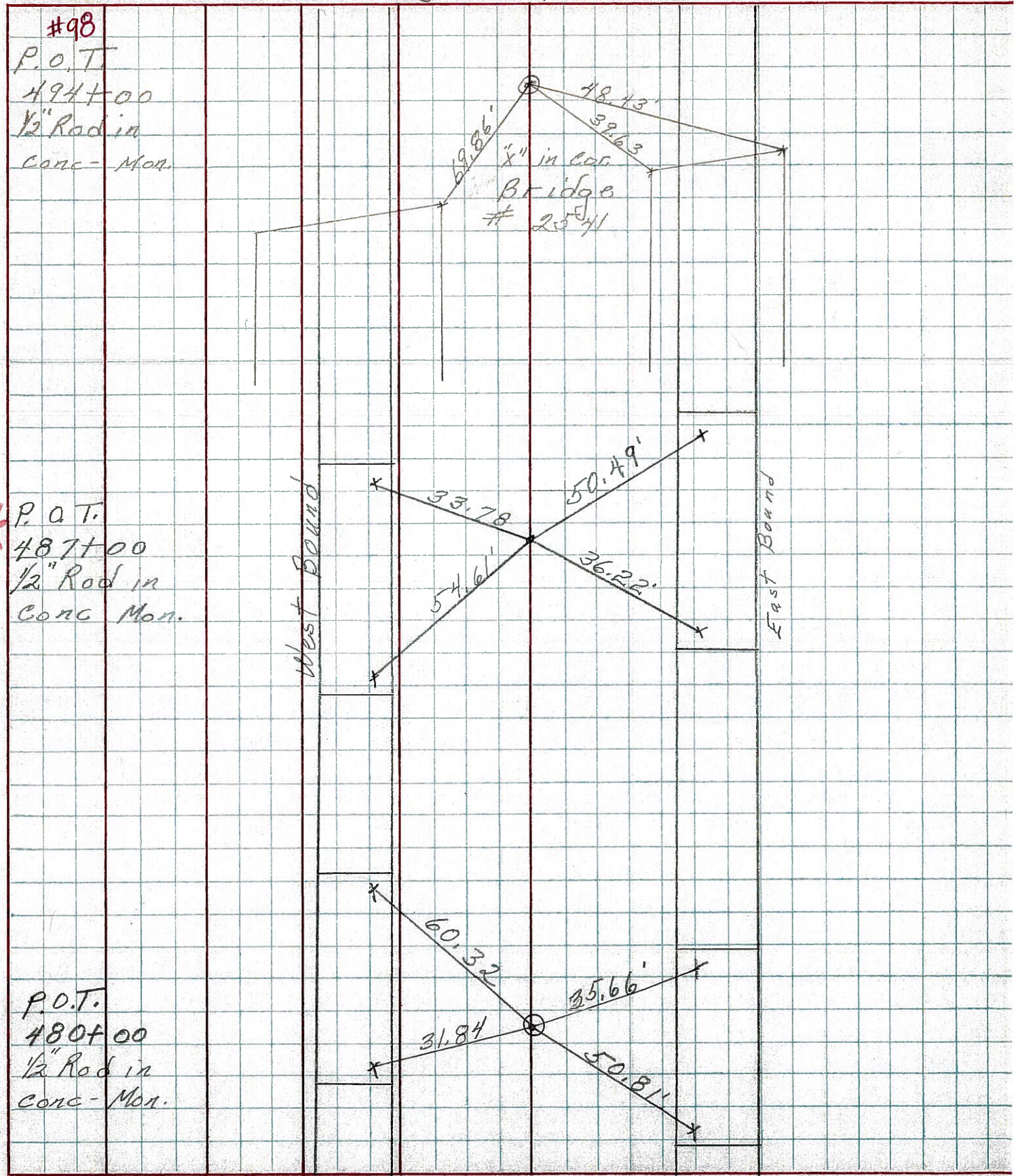


RECORD: P.O.T.  
STA 487+00  
FD CMON  
W/1/2" IPIN  
2/13/73, SCHNEIDER





PERSONNEL	TITLE	PERSONNEL	TITLE	COUNTY	DATE
Schneider				Ottawa	2-13-73
Mosser				S. R. 2	WEATHER cold
Barbour				SEC. 23.43	TEMP. 20°
Geyman					
DESCRIPTION				Sec 2	Portage Twp.
LEFT		CENTER LINE		RIGHT	
				JOB NO.	



#98  
 P.O.T.  
 494+00  
 1/2" Rod in  
 Conc-Mon.

\* P.O.T.  
 487+00  
 1/2" Rod in  
 Conc Mon.

P.O.T.  
 480+00  
 1/2" Rod in  
 Conc-Mon.

West Bound

East Bound

"x" in loc.  
 Bridge  
 # 2541