

O.D.O.T. DISTRICT 2 SURVEY OFFICE (USE ONLY)

PERSONNEL _____

REFERENCE NO. 94

SHEET 9 OF 23

NOTES NIESE

DATE 2/28/22

ROUTE SR 2

H.C. O'DONNELL

WEATHER CLOUDY

COUNTY OTTAWA

R.C. AUBLE

TEMP. 32°

TOWNSHIP PORTAGE

SECTION 2

DWG BY RHOADES PID 96755

T 6 N R 17 E

TYPE MONUMENT CMON W/ 1/2" IPIN- D.N.F.

ON SURFACE - ~~BELOW~~ ON

OFFSET Q PAVEMENT ON LT : RT

- TO - EDGE PAVEMENT

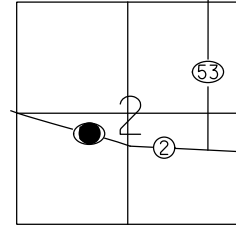
STATION: 1337+72.08

HORZ.DATUM: NAD83 2011

GEOID: NAVD88 2018

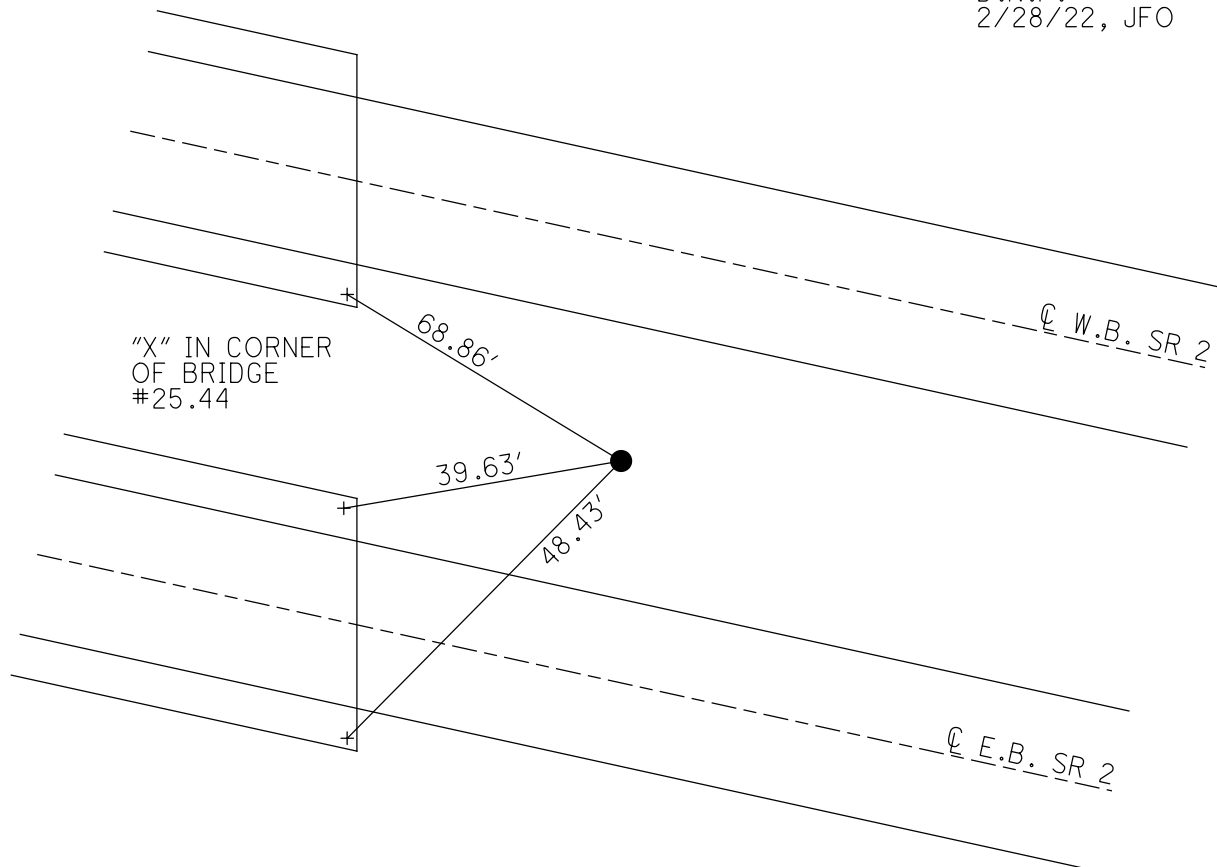
GRID: NORTHING: _____

EASTING: _____



NOTE: CMP POINT
RECSTA494
N: 670735.166
E: 1867049.567

RECORD: P.O.T.
STA 494+00
FD CMON
W/1/2" IPIN
2/13/73
D.N.F.
2/28/22, JFO

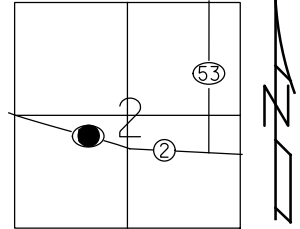


O.D.O.T. DISTRICT 2 SURVEY OFFICE (USE ONLY)

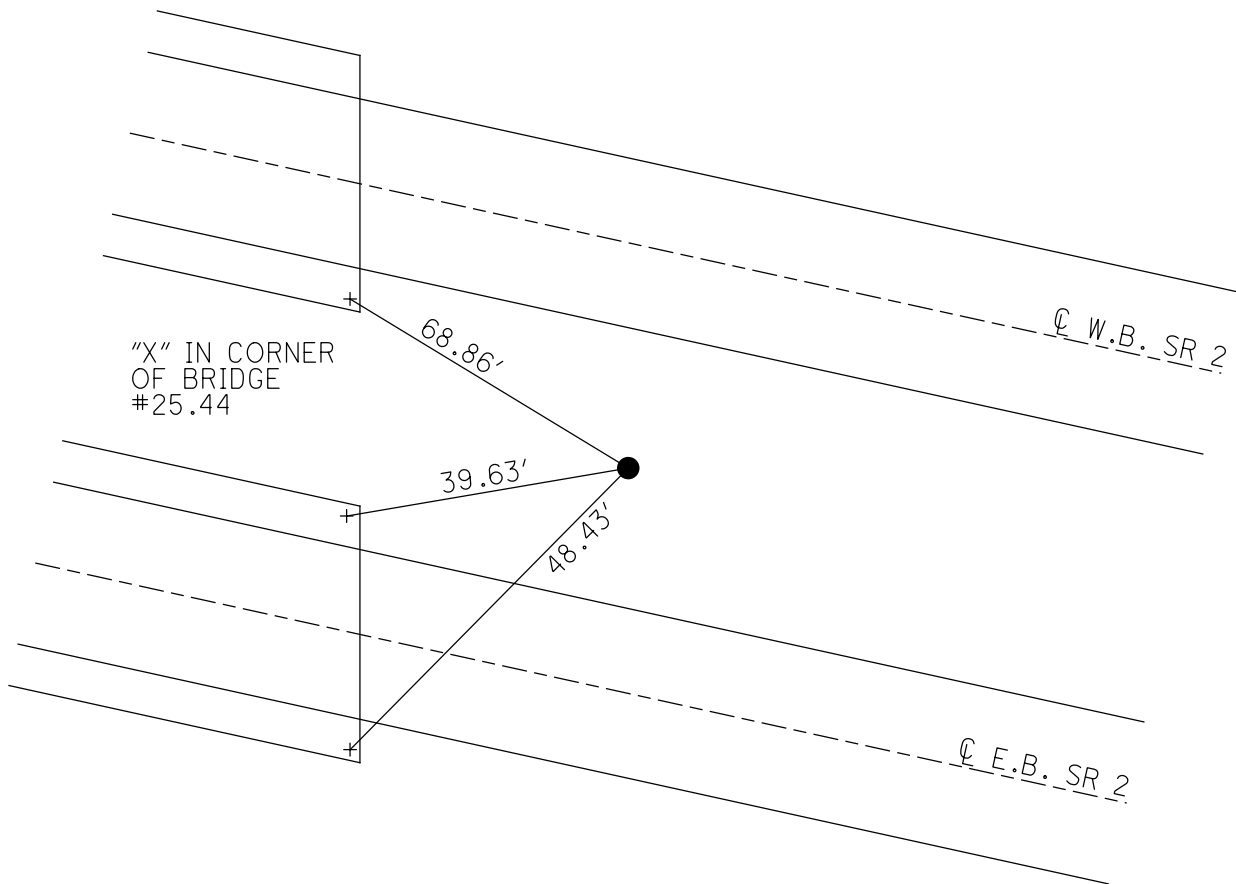
PERSONNEL _____ REFERENCE NO. 94 SHEET 9 OF 18
 NOTES SCHNEIDER DATE 2/13/73 ROUTE SR 2
 H.C. MOSSER WEATHER COLD COUNTY OTTAWA
 R.C. BARBOUR TEMP. 20° TOWNSHIP PORTAGE
 GEYMAN SECTION 2
 DWG BY NIESE PID _____ T 6 N R 17 E

TYPE MONUMENT CMON W/ 1/2" IPIN
 ON SURFACE - ~~BELOW~~ ON
 OFFSET \varnothing PAVEMENT ON LT : RT
- TO - EDGE PAVEMENT
 STATION: 1337+72.08

HORIZ.DATUM: _____ GEOID: _____
 GRID: NORTHING: _____ EASTING: _____



RECORD: P.O.T.
 STA 494+00
 FD CMON
 W/1/2" IPIN
 2/13/73



PERSONNEL	TITLE	PERSONNEL	TITLE
Schneider			
Mosser			
Barbour			
Geyman			

COUNTY Ottawa DATE 2-13-73

S. R. 2 WEATHER cold

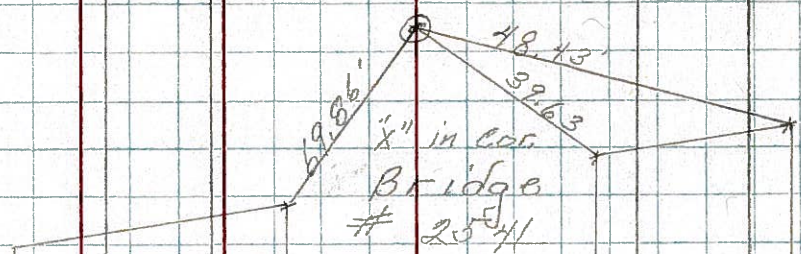
SEC. 23.43 TEMP. 20°

DESCRIPTION Sec 2 Portage Twp. JOB NO. _____

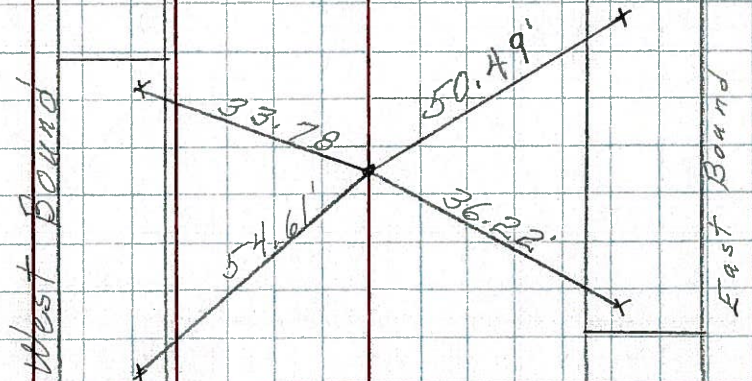
LEFT CENTER LINE RIGHT



#98
 P.O.T.
 494+00
 1/2" Rod in
 Conc - Mon.



P.O.T.
 487+00
 1/2" Rod in
 Conc Mon.



P.O.T.
 480+00
 1/2" Rod in
 Conc - Mon.

