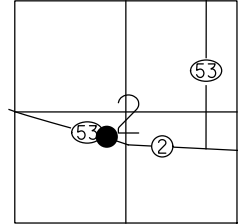


O.D.O.T. DISTRICT 2 SURVEY OFFICE (USE ONLY)

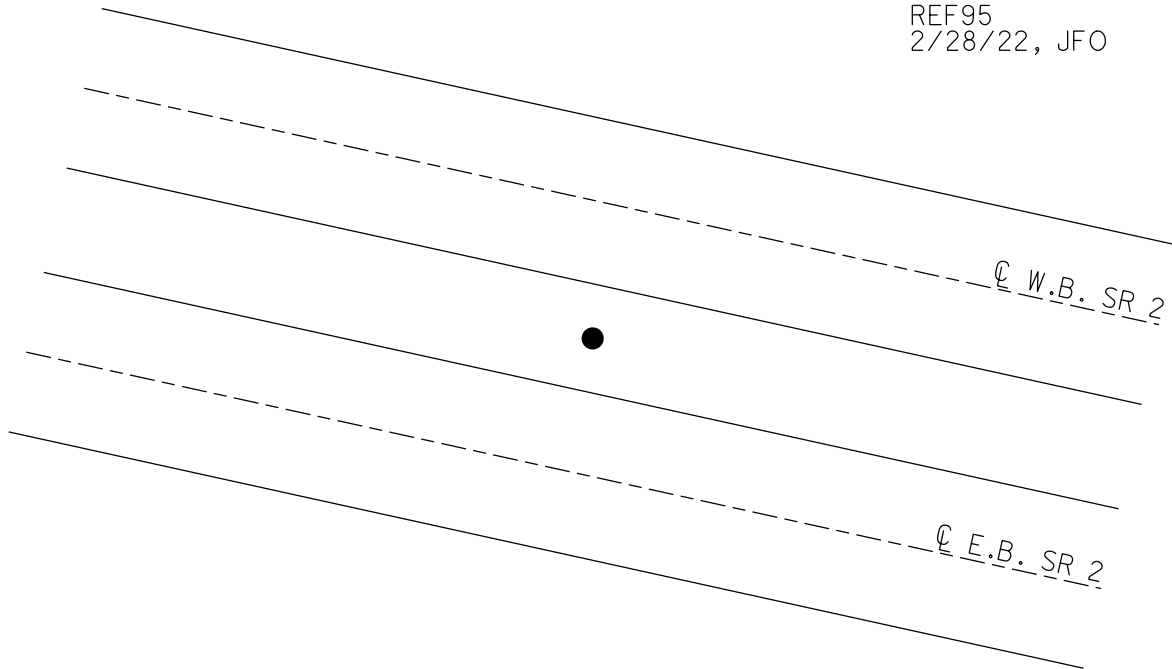
PERSONNEL _____ REFERENCE NO. 95 SHEET 10 OF 23
NOTES NIESE DATE 2/28/22 ROUTE SR 2
H.C. O'DONNELL WEATHER CLOUDY COUNTY OTTAWA
R.C. AUBLE TEMP. 32° TOWNSHIP PORTAGE
SECTION 2
DWG BY RHOADES PID 96755 T 6 N R 17 E

TYPE MONUMENT CMON W/ ODOT DISC
ON SURFACE - ~~BELOW~~ ON
OFFSET Q PAVEMENT ON LT : RT
- TO - EDGE PAVEMENT
STATION: 1343+68.78



HORIZ.DATUM: NAD83 2011 GEOID: NAVD88 2018
GRID: NORTHING: 670598.444 EASTING: 1867633.755

RECORD: P.O.T.
STA 500+00
FD CMON
W/1/2" IPIN
2/13/73, SCHNEIDER
FD CMON
W/ ODOT DISC
REF95
2/28/22, JFO



O.D.O.T. DISTRICT 2 SURVEY OFFICE (USE ONLY)

PERSONNEL

REFERENCE NO. 95

SHEET 10 OF 18

NOTES SCHNEIDER DATE 2/13/73
H.C. MOSSER WEATHER FAIR
R.C. BARBOUR TEMP. 40°
GEYMAN

ROUTE SR 2
COUNTY OTTAWA
TOWNSHIP PORTAGE
SECTION 2
T 6 N R 17 E

DWG BY NIESE PID _____

TYPE MONUMENT CMON W/ 1/2" IPIN

ON SURFACE - ~~BELOW~~ ON

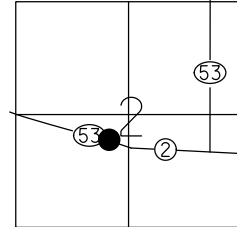
OFFSET \varnothing PAVEMENT ON LT : RT

- TO - EDGE PAVEMENT

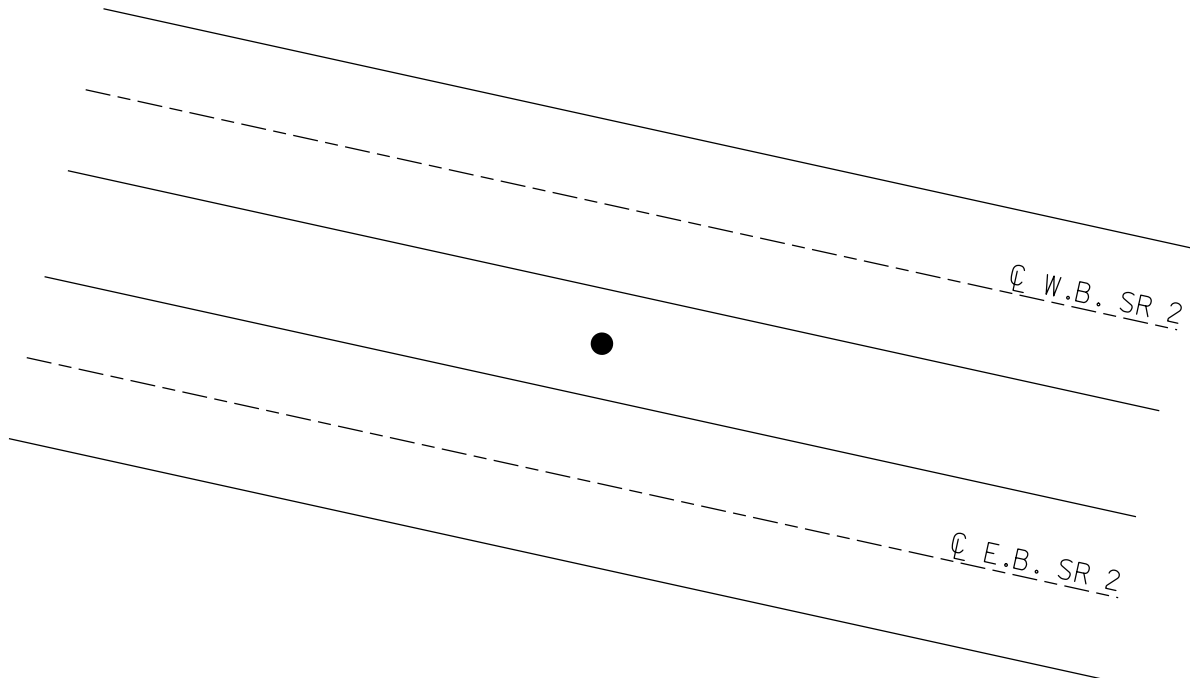
STATION: 1343+72.08

HORIZ.DATUM: _____ GEOID: _____

GRID: NORTHING: _____ EASTING: _____



RECORD: P.O.T.
STA 500+00
FD CMON
W/1/2" IPIN
2/13/73, SCHNEIDER



PERSONNEL TITLE PERSONNEL TITLE

COUNTY Ottawa

DATE 2-13-73

S. R. 2

WEATHER Fair

SEC. 23.43

TEMP. 40°

DESCRIPTION Sec 2 Portage Twp.

JOB NO.

LEFT

CENTER LINE

RIGHT

P.T.
517+21.95
1/2" Rod in
Conc-Mon.

P.C.
509+07.16
1/2" Rod in
Conc-Mon.

* P.O.T.
500+00
1/2" Rod in
Conc-Mon.

