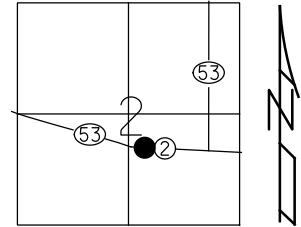


O.D.O.T. DISTRICT 2 SURVEY OFFICE (USE ONLY)

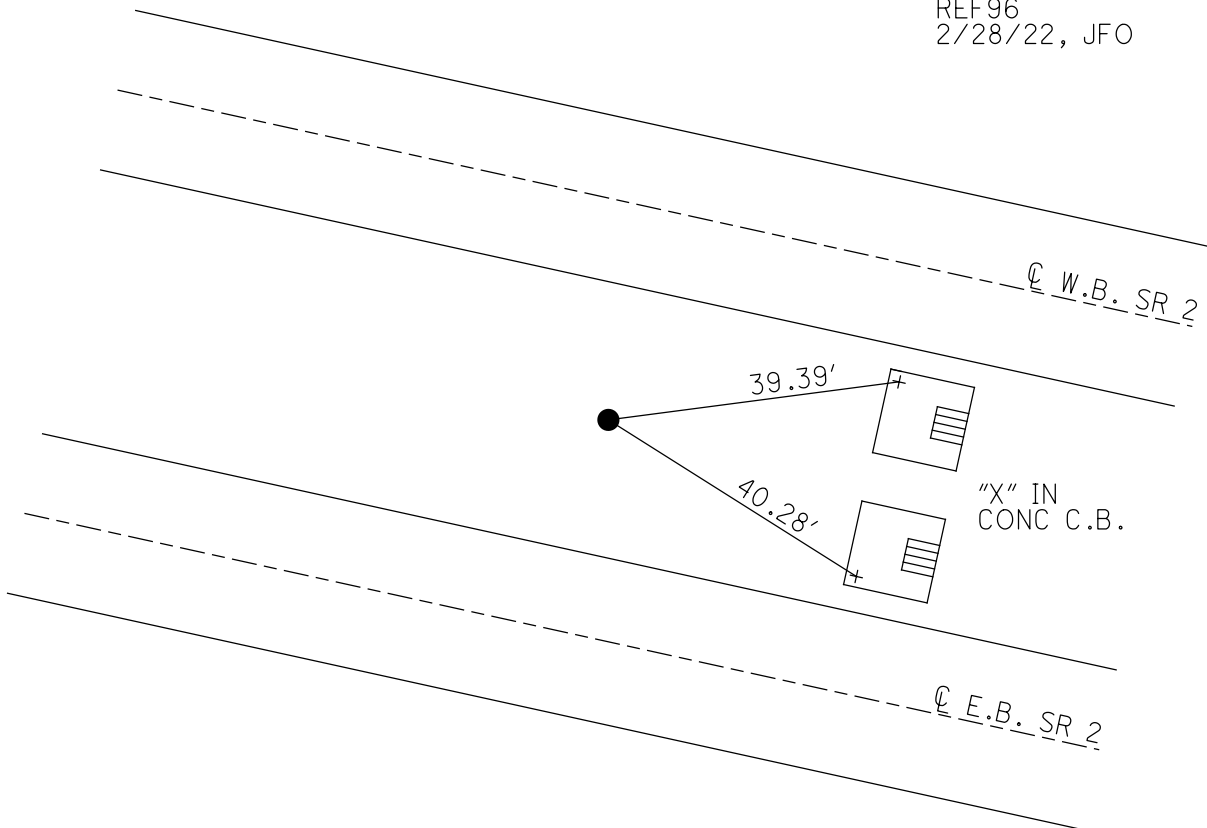
PERSONNEL _____ REFERENCE NO. 96 SHEET 11 OF 23
 NOTES NIESE DATE 2/28/22 ROUTE SR 2
 H.C. O'DONNELL WEATHER CLOUDY COUNTY OTTAWA
 R.C. AUBLE TEMP. 32° TOWNSHIP PORTAGE
 SECTION 2
 DWG BY RHOADES PID 96755 T 6 N R 17 E

TYPE MONUMENT CMON W/ ODOT DISC
 ON SURFACE - ~~BELOW~~ ON
 OFFSET ☉ PAVEMENT ON LT : RT
- TO - EDGE PAVEMENT
 STATION: 1352+75.86

HORIZ.DATUM: NAD83 2011 GEOID: NAVD88 2018
 GRID: NORTHING: 670391.708 EASTING: 1868516.959



RECORD: P.C.
 STA 509+07.16
 FD CMON
 W/1/2" IPIN
 2/13/73, SCHNEIDER
 FD CMON
 W/ ODOT DISC
 REF96
 2/28/22, JFO



O.D.O.T. DISTRICT 2 SURVEY OFFICE (USE ONLY)

PERSONNEL

REFERENCE NO. 96

SHEET 11 OF 18

NOTES SCHNEIDER
 H.C. MOSSER
 R.C. BARBOUR
GEYMAN

DATE 2/13/73
 WEATHER FAIR
 TEMP. 40°

ROUTE SR 2
 COUNTY OTTAWA
 TOWNSHIP PORTAGE
 SECTION 2

DWG BY NIESE PID _____

T 6 N R 17 E

TYPE MONUMENT CMON W/ 1/2" IPIN

ON SURFACE - ~~BELOW~~ ON

OFFSET \varnothing PAVEMENT ON LT : RT

- TO - EDGE PAVEMENT

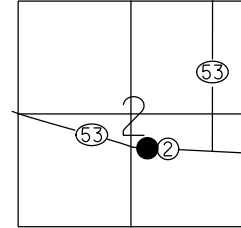
STATION: 1352+79.24

HORZ.DATUM: _____

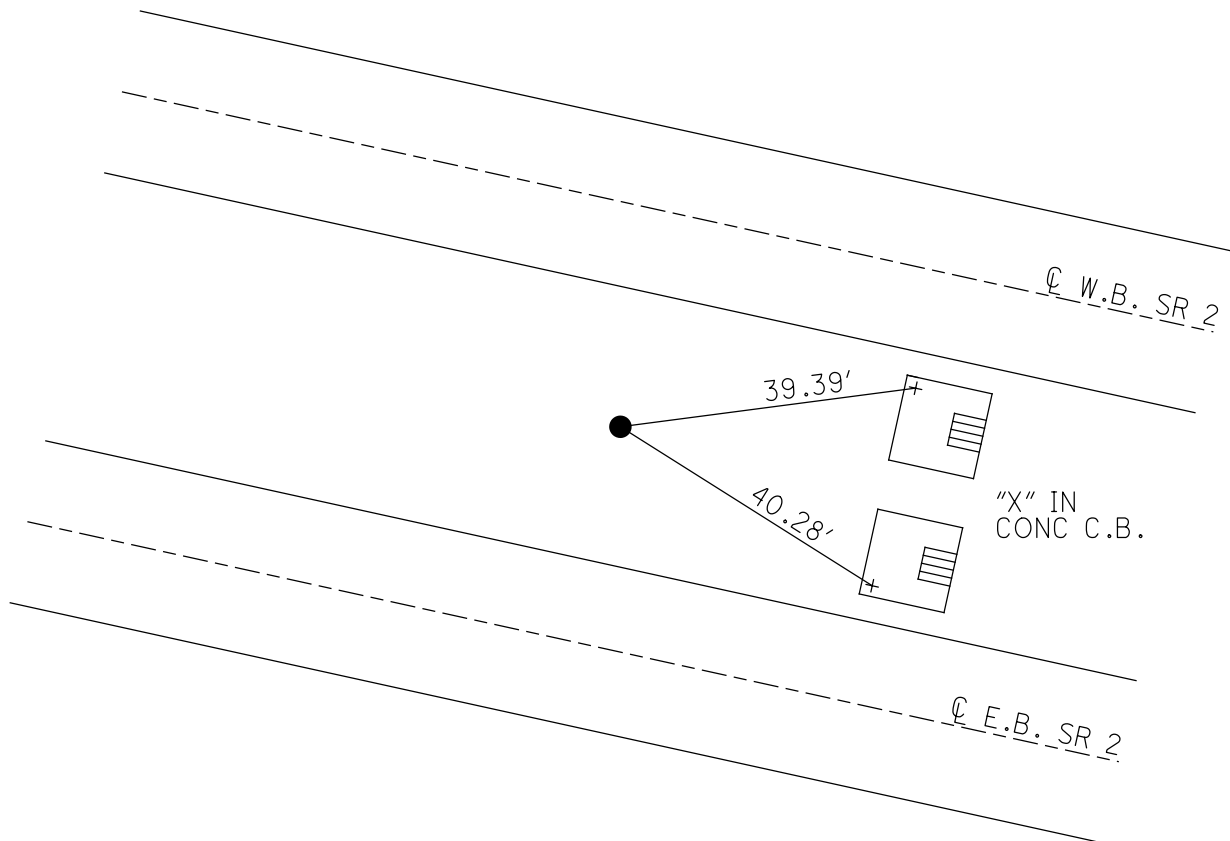
GEOID: _____

GRID: NORTHING: _____

EASTING: _____



RECORD: P.C.
 STA 509+07.16
 FD CMON
 W/1/2" IPIN
 2/13/73, SCHNEIDER



PERSONNEL TITLE PERSONNEL TITLE

COUNTY Ottawa

DATE 2-13-73

S. R. 2

WEATHER Fair

SEC. 23.43

TEMP. 40°

DESCRIPTION Sec 2 Portage Twp.

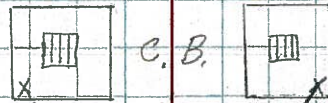
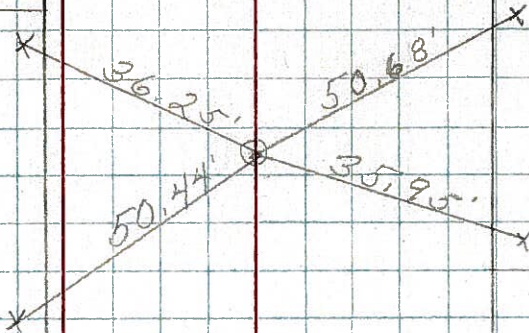
JOB NO.

LEFT

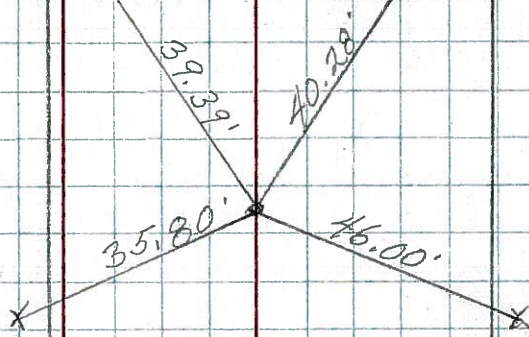
CENTER LINE

RIGHT

P.T.
517+21.95
1/2" Rod in
Conc-Mon.



* P.C.
509+07.16
1/2" Rod in
Conc-Mon.



P.O.T.
500+00
1/2" Rod in
Conc Mon.

