

O.D.O.T. DISTRICT 2 SURVEY OFFICE (USE ONLY)

PERSONNEL

REFERENCE NO. 97

SHEET 12 OF 23

NOTES NIESE

DATE 2/28/22

ROUTE SR 2

H.C. O'DONNELL

WEATHER CLOUDY

COUNTY OTTAWA

R.C. AUBLE

TEMP. 32°

TOWNSHIP PORTAGE

SECTION 2

DWG BY RHOADES PID 96755

T 6 N R 17 E

TYPE MONUMENT CMON W/ HOLE

~~ON SURFACE~~ - BELOW 3"

OFFSET ☉ PAVEMENT ON LT : RT

- TO - EDGE PAVEMENT

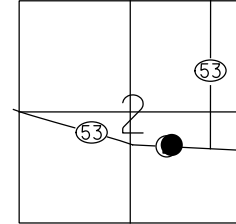
STATION: 1360+90.20

HORZ.DATUM: NAD83 2011

GEOID: NAVD88 2018

GRID: NORTHING: 670289.816

EASTING: 1869323.418



RECORD: P.T.  
STA 517+21.95  
FD CMON  
W/1/2" IPIN  
2/13/73, SCHNEIDER  
FD CMON DAMAGED  
3" DOWN  
NO PIN-SHOT CTR HOLE  
REF97  
2/28/22, JFO

\_\_\_\_\_

☉ W.B. SR 2

-----

\_\_\_\_\_



\_\_\_\_\_

☉ E.B. SR 2

-----

\_\_\_\_\_

O.D.O.T. DISTRICT 2 SURVEY OFFICE (USE ONLY)

PERSONNEL

REFERENCE NO. 97

SHEET 12 OF 18

NOTES SCHNEIDER

DATE 2/13/73

ROUTE SR 2

H.C. MOSSER

WEATHER FAIR

COUNTY OTTAWA

R.C. BARBOUR

TEMP. 40°

TOWNSHIP PORTAGE

GEYMAN

SECTION 2

DWG BY NIESE

PID \_\_\_\_\_

T 6 N R 17 E

TYPE MONUMENT CMON W/ 1/2" IPIN

ON SURFACE - ~~BELOW~~ ON

OFFSET Q PAVEMENT ON LT : RT

- TO - EDGE PAVEMENT

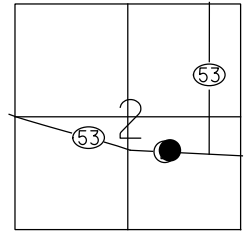
STATION: 1360+94.03

HORZ. DATUM: \_\_\_\_\_

GEOID: \_\_\_\_\_

GRID: NORTHING: \_\_\_\_\_

EASTING: \_\_\_\_\_



RECORD: P.T.  
STA 517+21.95  
FD CMON  
W/1/2" IPIN  
2/13/73, SCHNEIDER

\_\_\_\_\_

----- Q W.B. SR 2

\_\_\_\_\_



\_\_\_\_\_

----- Q E.B. SR 2

\_\_\_\_\_

PERSONNEL TITLE PERSONNEL TITLE

COUNTY Ottawa

DATE 2-13-73

S. R. 2

WEATHER Fair

SEC. 23.43

TEMP 40°

DESCRIPTION Sec 2 Portage Twp.

JOB NO.

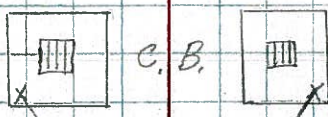
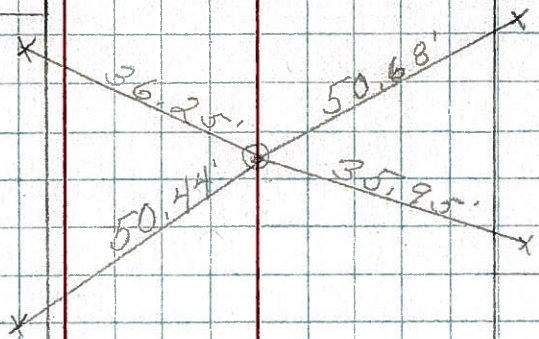
LEFT

CENTER LINE

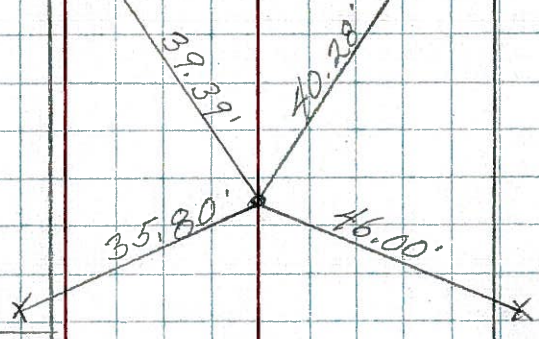
RIGHT



P.T.  
517+21.95  
1/2" Rod in  
Conc - Mon.



P.C.  
509+07.16  
1/2" Rod in  
Conc - Mon.



P.O.T.  
500+00  
1/2" Rod in  
Conc - Mon.

