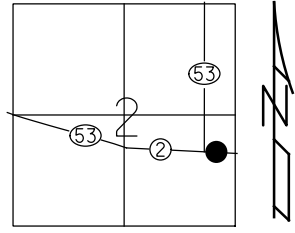


O.D.O.T. DISTRICT 2 SURVEY OFFICE (USE ONLY)

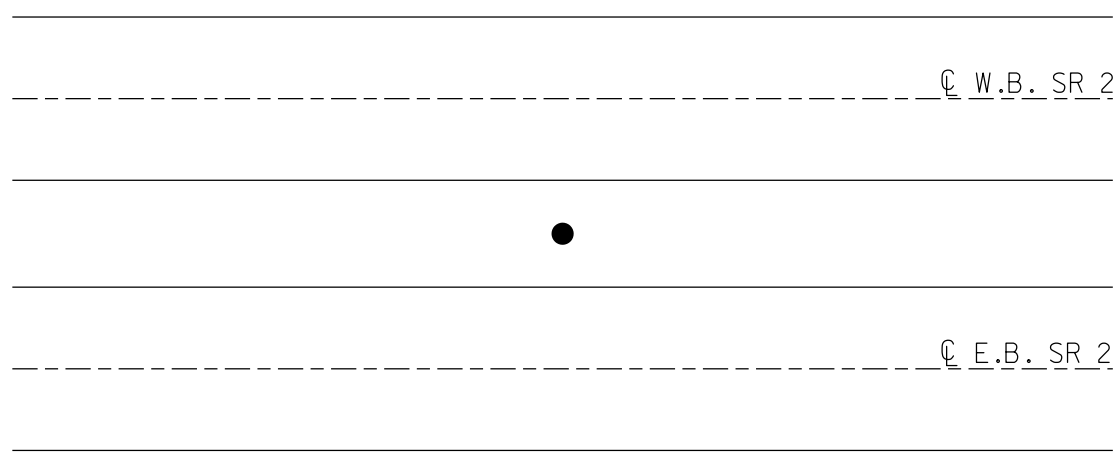
PERSONNEL _____ REFERENCE NO. 99 SHEET 14 OF 23
NOTES NIESE DATE 2/28/22 ROUTE SR 2
H.C. O'DONNELL WEATHER CLOUDY COUNTY OTTAWA
R.C. AUBLE TEMP. 32° TOWNSHIP PORTAGE
SECTION 2
DWG BY RHOADES PID 96755 T 6 N R 17 E

TYPE MONUMENT CMON W/ 1/2" IPIN
ON SURFACE - ~~BELOW~~ ON
OFFSET Q PAVEMENT ON LT : RT
- TO - EDGE PAVEMENT
STATION: 1370+67.62



HORZ. DATUM: NAD83 2011 GEOID: NAVD88 2018
GRID: NORTHING: 670268.948 EASTING: 1870300.619

RECORD: P.O.T.
STA 527+00
FD CMON
W/1/2" IPIN
3/1/73, SCHNEIDER
FD CMON
W/ 1/2" IPIN
REF99
2/28/22, JFO



O.D.O.T. DISTRICT 2 SURVEY OFFICE (USE ONLY)

PERSONNEL

REFERENCE NO. 99

SHEET 14 OF 18

NOTES SCHNEIDER

DATE 3/1/73

ROUTE SR 2

H.C. MOSSER

WEATHER FAIR

COUNTY OTTAWA

R.C. BARBOUR

TEMP. 50°

TOWNSHIP PORTAGE

GEYMAN

SECTION 2

DWG BY NIESE

PID _____

T 6 N R 17 E

TYPE MONUMENT CMON W/ 1/2" IPIN

ON SURFACE - ~~BELOW~~ ON

OFFSET C PAVEMENT ON LT : RT

- TO - EDGE PAVEMENT

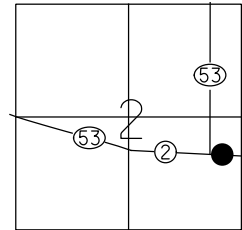
STATION: 1370+46.40

HORZ. DATUM: _____

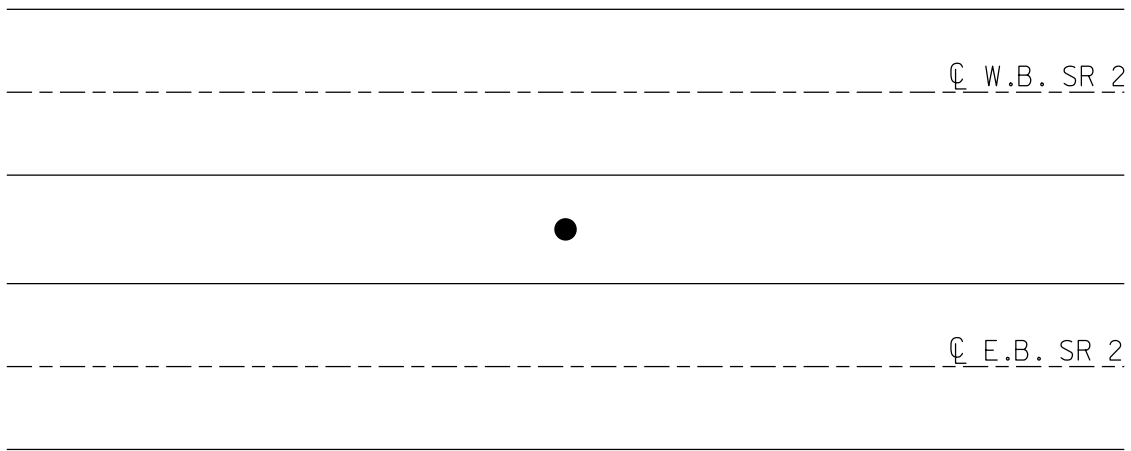
GEOID: _____

GRID: NORTHING: _____

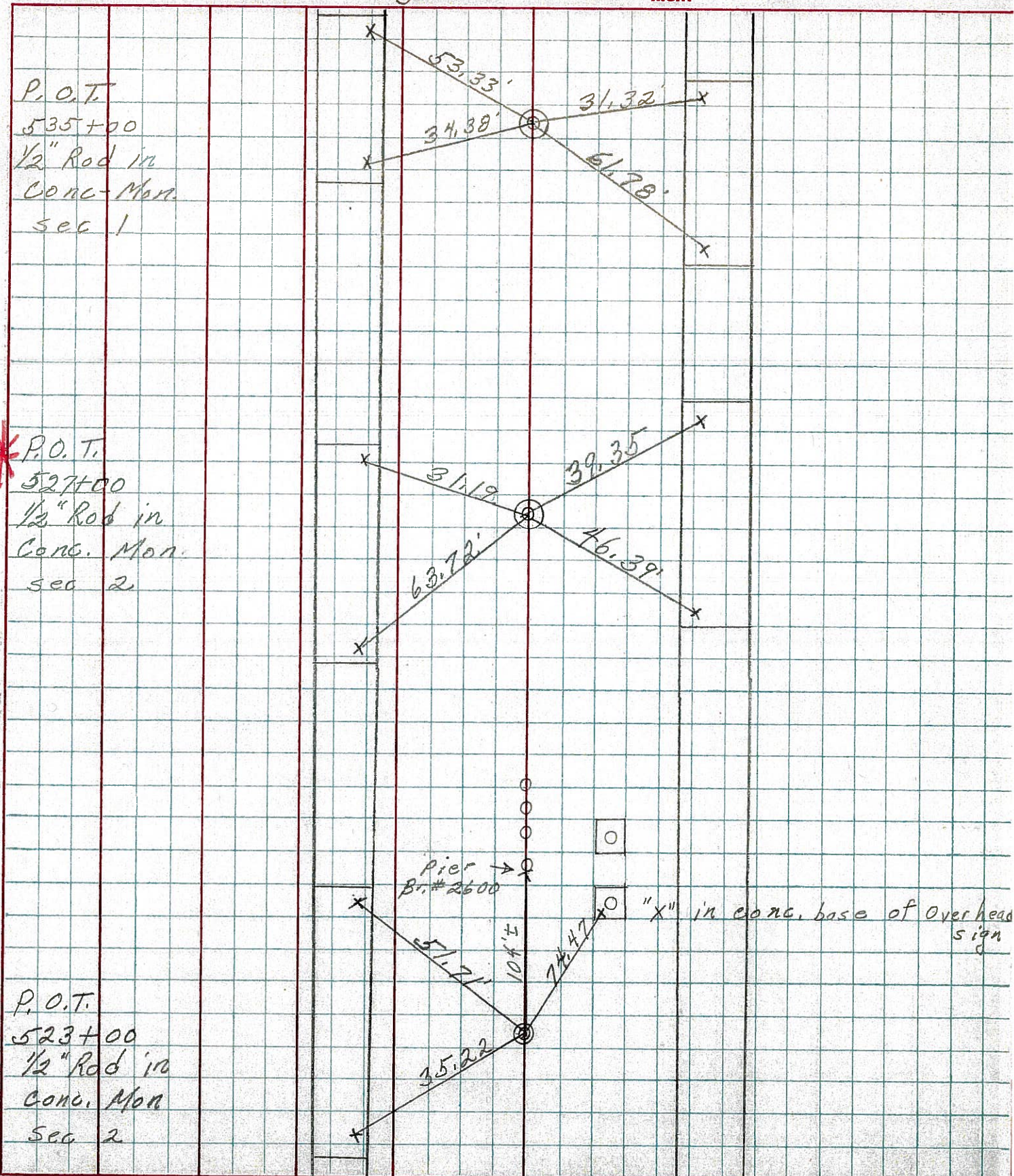
EASTING: _____



RECORD: P.O.T.
 STA 527+00
 FD CMON
 W/1/2" IPIN
 3/1/73, SCHNEIDER



PERSONNEL TITLE PERSONNEL TITLE COUNTY Ottawa DATE 8-1-73
 Mosser S. R. 2 WEATHER Fair
 Barboer SEC. 23.43 TEMP. 50°
 Geyman DESCRIPTION Sec 2 & 1 Portage Twp. JOB NO.



P.O.T.
535+00
1/2" Rod in
Conc. Mon.
Sec 1

* P.O.T.
527+00
1/2" Rod in
Conc. Mon.
Sec 2

P.O.T.
523+00
1/2" Rod in
Conc. Mon.
Sec 2

Pier
Br. #2600

"X" in conc. base of Over head sign