

O.D.O.T. DISTRICT 2 SURVEY OFFICE (USE ONLY)

PERSONNEL \_\_\_\_\_ REFERENCE NO. 100 SHEET 15 OF 23  
 NOTES RHOADES DATE 3/1/22 ROUTE SR 2  
 H.C. O'DONNELL WEATHER CLOUDY COUNTY OTTAWA  
 R.C. AUBLE TEMP. 44° TOWNSHIP PORTAGE  
           NIESE SECTION 1  
 DWG BY RHOADES PID 96755 T 6 N R 17 E

TYPE MONUMENT CMON W/ 1/2" IPIN

~~ON SURFACE~~ - BELOW 2"

OFFSET  $\odot$  PAVEMENT ON LT : RT

- TO - EDGE PAVEMENT

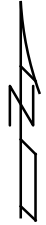
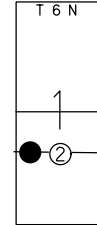
STATION: 1378+67.94

HORZ.DATUM: NAD83 2011

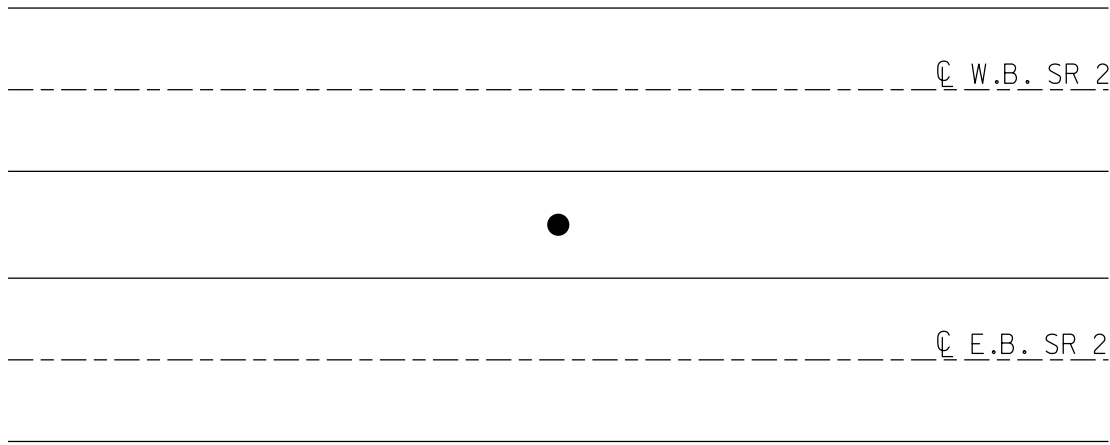
GEOID: NAVD88 2018

GRID: NORTHING: 670251.871

EASTING: 1871100.754



RECORD: P.O.T.  
 STA 535+00  
 FD CMON  
 W/1/2" IPIN  
 3/1/73, SCHNEIDER  
 FD CMON  
 W/ 1/2" IPIN  
 2" DOWN  
 REF100  
 3/1/22, JFO



O.D.O.T. DISTRICT 2 SURVEY OFFICE (USE ONLY)

PERSONNEL

REFERENCE NO. 100

SHEET 15 OF 18

NOTES SCHNEIDER

DATE 3/1/73

ROUTE SR 2

H.C. MOSSER

WEATHER FAIR

COUNTY OTTAWA

R.C. BARBOUR

TEMP. 50°

TOWNSHIP PORTAGE

GEYMAN

SECTION 1

DWG BY NIESE PID \_\_\_\_\_

T 6 N R 17 E

TYPE MONUMENT CMON W/ 1/2" IPIN

ON SURFACE - ~~BELOW~~ ON

OFFSET ☉ PAVEMENT ON LT : RT

- TO - EDGE PAVEMENT

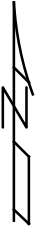
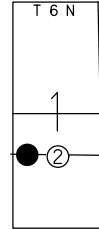
STATION: 1378+46.4

HORZ.DATUM: \_\_\_\_\_

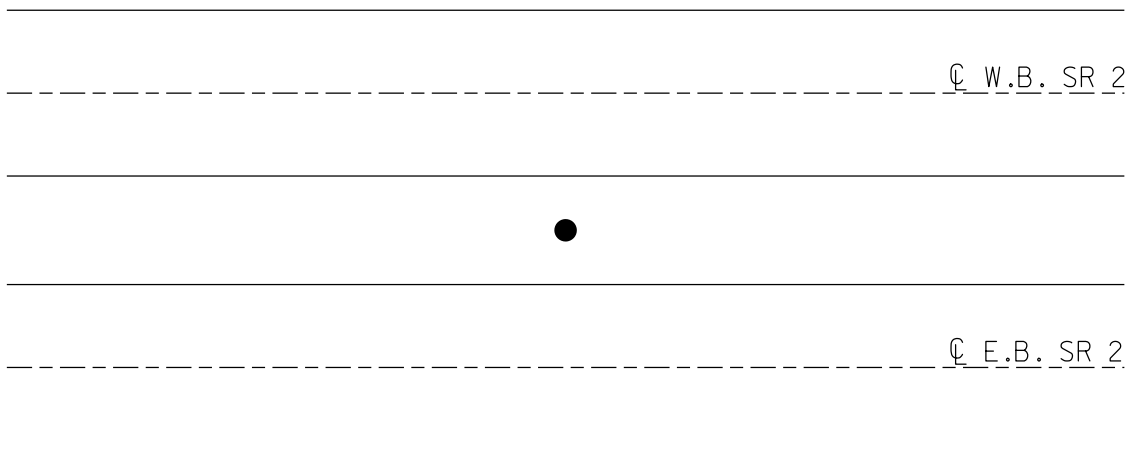
GEOID: \_\_\_\_\_

GRID: NORTHING: \_\_\_\_\_

EASTING: \_\_\_\_\_



RECORD: P.O.T.  
STA 535+00  
FD CMON  
W/1/2" IPIN  
3/1/73, SCHNEIDER





PERSONNEL TITLE PERSONNEL TITLE  
 Schneider \_\_\_\_\_  
 Mosser \_\_\_\_\_  
 Barbour \_\_\_\_\_  
 Geyman \_\_\_\_\_

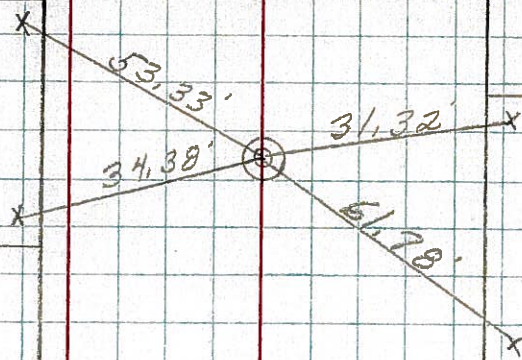
COUNTY Ottawa DATE 8-1-73  
 S. R. 2 WEATHER Fair  
 SEC. 23.43 TEMP. 50°

DESCRIPTION Sec 2 & 1 Portage Twp. JOB NO. \_\_\_\_\_

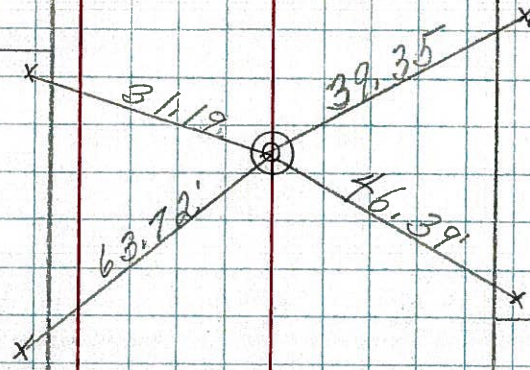
LEFT CENTER LINE RIGHT



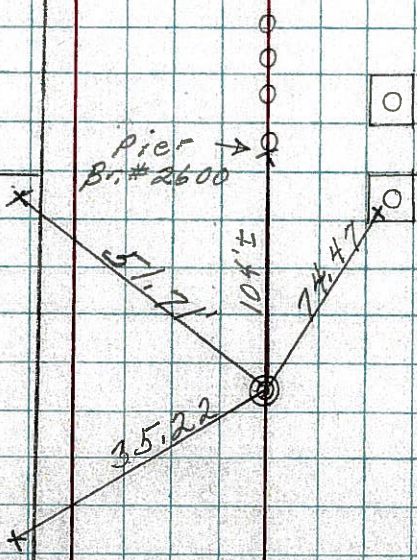
P.O.T.  
 535+00  
 1/2" Rod in  
 Conc. Mon.  
 Sec 1



P.O.T.  
 527+00  
 1/2" Rod in  
 Conc. Mon.  
 Sec 2



Pier  
 Br. #2600



"x" in conc. base of Over head sign

P.O.T.  
 523+00  
 1/2" Rod in  
 Conc. Mon.  
 Sec 2